



## Check out licenses

Version 2023

What is to be done?

Date of issue: 22/05/2023

[isdgroup.com](http://isdgroup.com)



THE WORLD OF CAD AND PDM SOLUTIONS



# TOC

<b>Check Out Licenses</b> .....	<b>4</b>
A concrete use case .....	4
Solution .....	4
Proceed as follows .....	4
<b>Checking Out Commuter Licenses, with Network Connection</b> .....	<b>5</b>
<b>Checking Out Commuter Licenses, without Network Connection</b> .....	<b>9</b>

## Check Out Licenses

### A concrete use case

Let's assume that your company has a Network Commuter license with 4 licenses. On Friday you want to take your laptop home to continue working during the weekend.

What are the steps to get the license on your laptop and what do you need to do to return the license on Monday?

### Solution

On Friday before closing time, e.g. at 5 pm, check out a license for 2 days. This license is valid for 2 days from that time until 23:59 on the last day. That means in this case you can use the license on your laptop until 23:59 on Sunday evening. After that it is automatically available again on the server. So you do not have to take any additional steps on Monday in the office.

**Prerequisite:** HiCAD must have been installed on your laptop.

### Proceed as follows

Since your company has a Network Commuter license, network licenses can be used even if there is no network connection from the workstation (e.g. your laptop) to the server.

This gives you two options for obtaining a Commuter license for the weekend:

- direct check out from the License Server
- Check-out from the license server without network connection. For this you need the support of the Administrator.

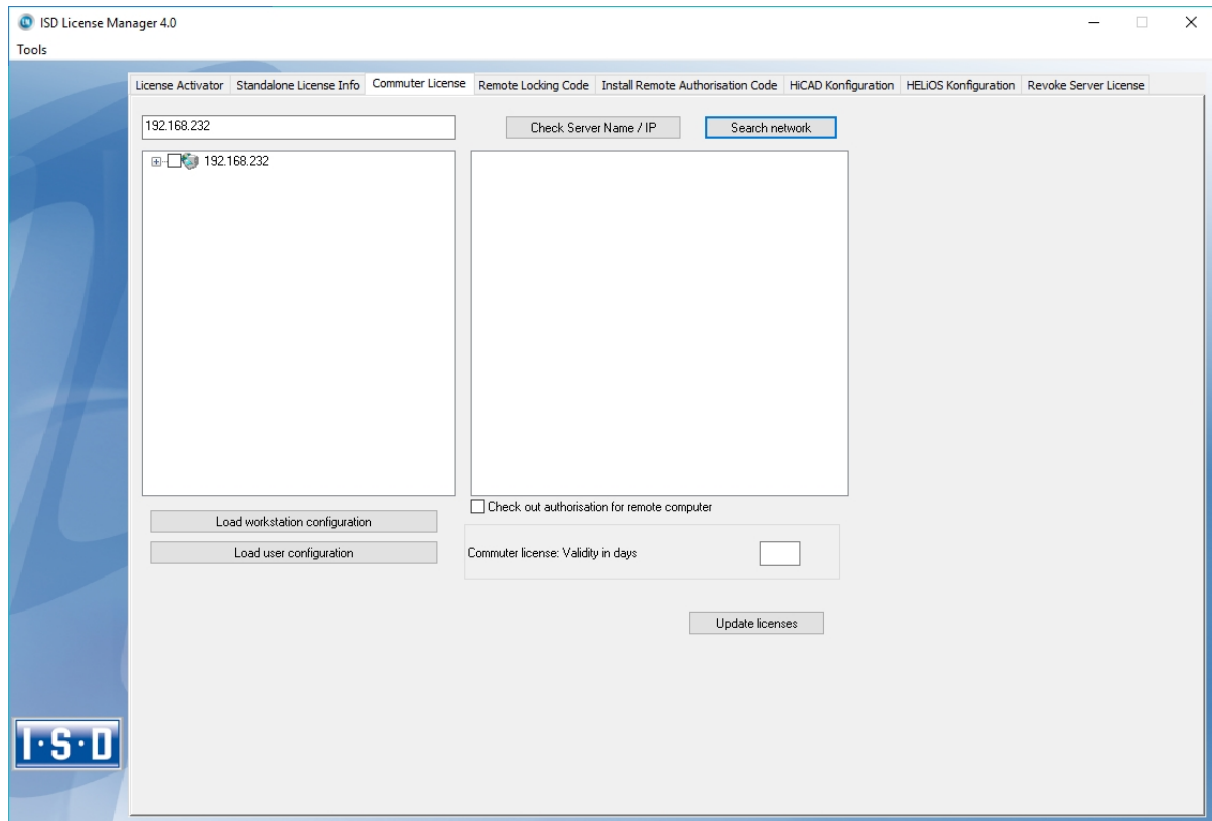


#### **Please note:**

Checking out a license for use on your laptop does not mean that you have access to drawings and HELiOS on your company's network!

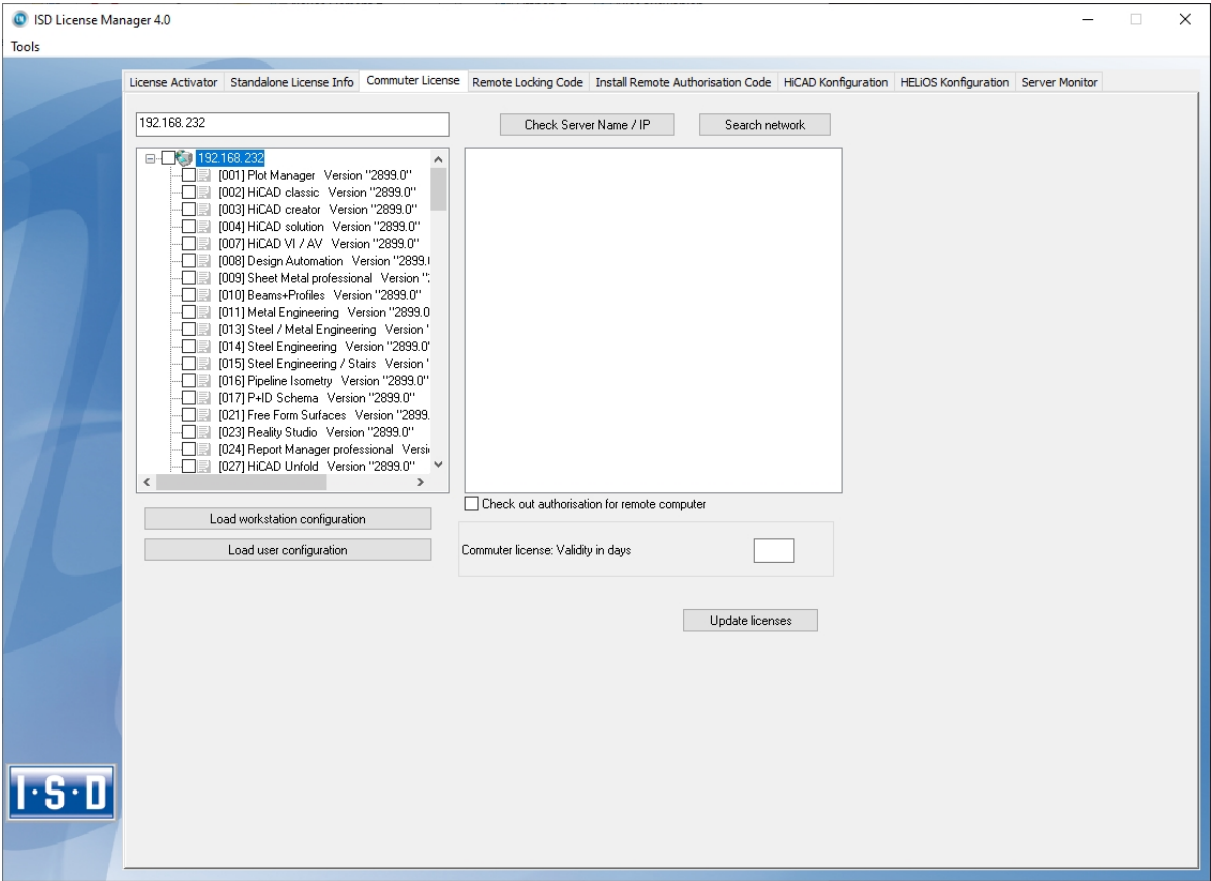
## Checking Out Commuter Licenses, with Network Connection

Start the **ISD License Manager** (while a connection to the Server still exists). Switch to the **Commuter License** tab.

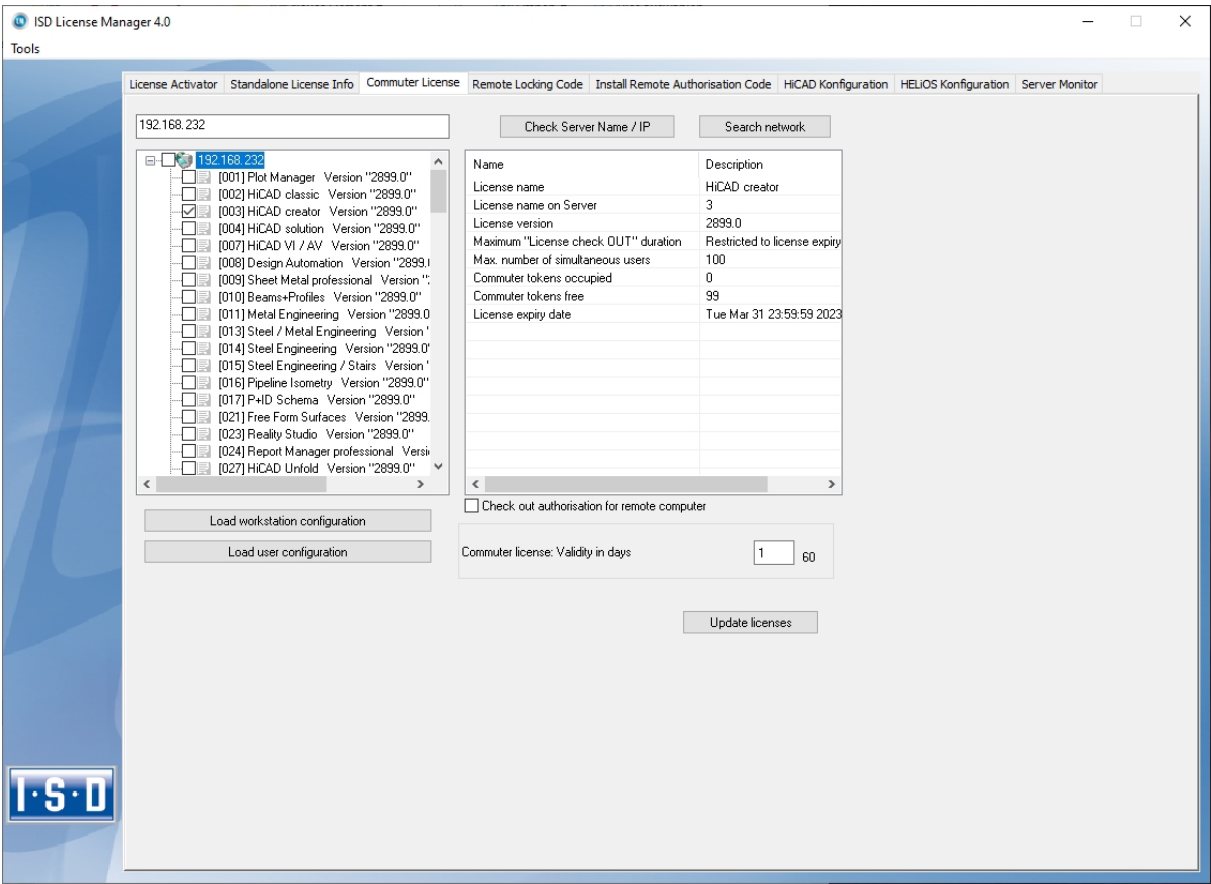


If you have set the system environment variable **LSFORCEHOST**, the entered License Server will be displayed as the preselected server upon start. Use the **Search network** button to automatically search for License Servers.

Expand the tree structure of the found Server by a click on the “+”-sign. The result looks as follows:



Select the required licenses by activating the corresponding checkboxes on the left hand side.

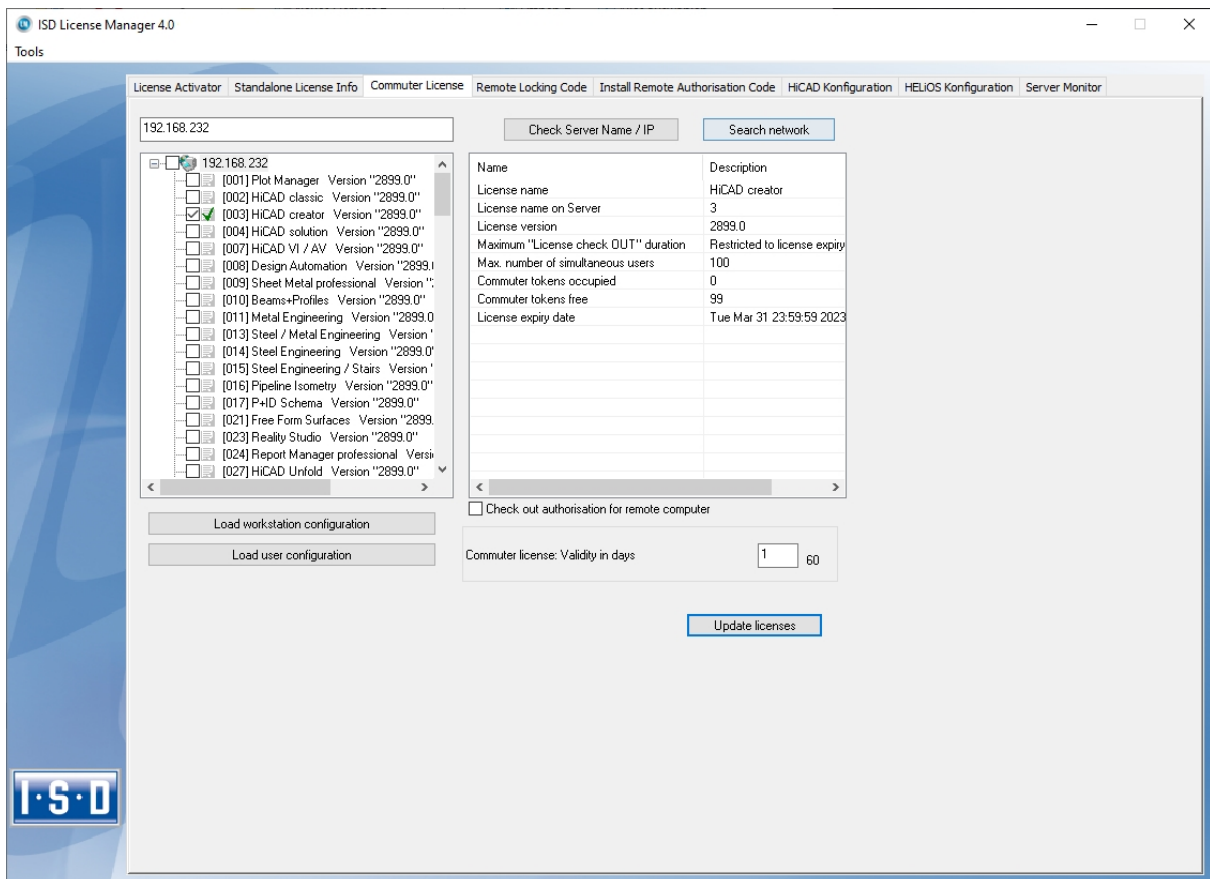


On the right hand side, information on the selected license is displayed.

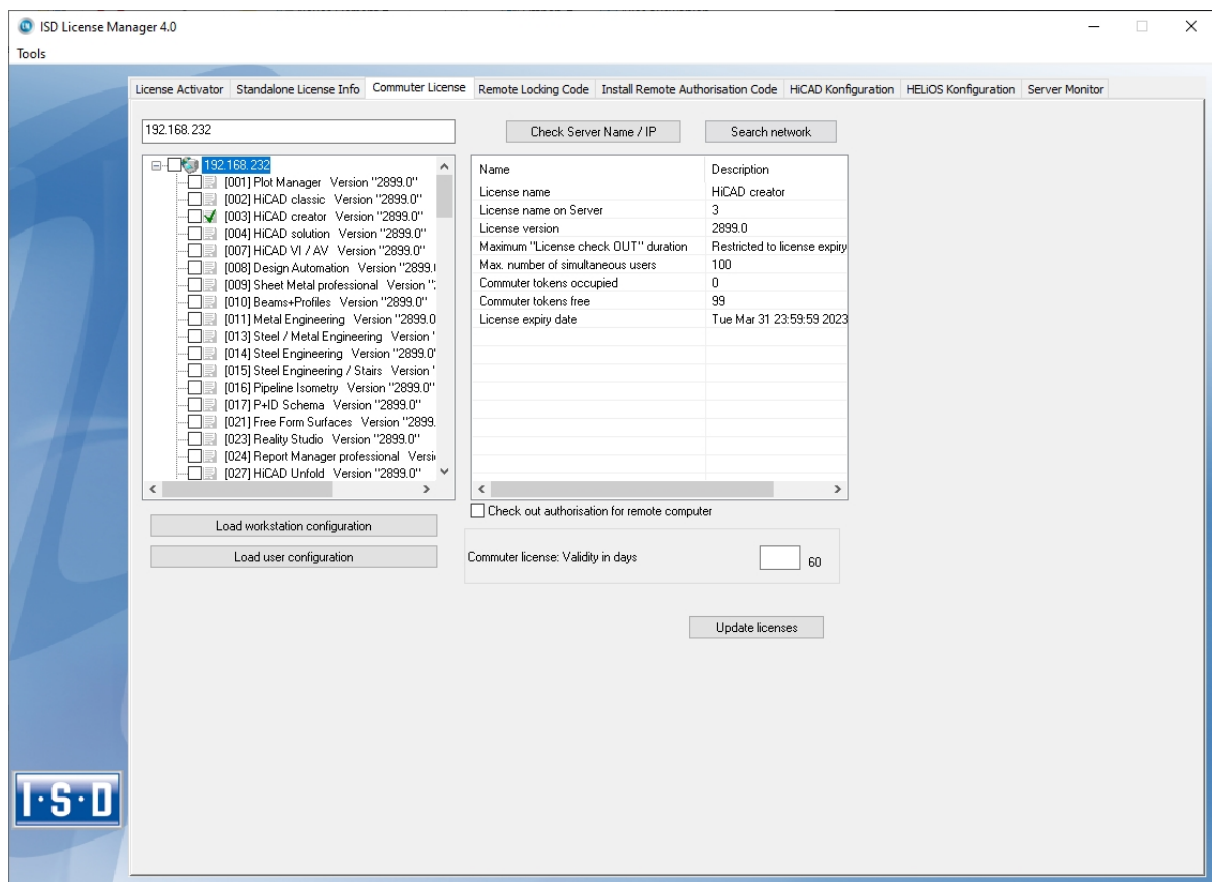
In the **Commuter license: Validity in days** field, you enter the number of days that you want the commuter licenses to remain checked out from the Server. The maximum number of days is 60. By default (or if a "0" is entered), the value is set to 1.

For reasons of safety you should check out the licenses only for the required period! If a commuter license is lost, e.g. because of theft or a defect of the client computer, the license on the Server cannot be used any more before expiry of this date.

After entering the expiry date for the commuter licenses, click the **Update licenses** button. The Commuter licenses are checked out from the Server.



All selected licenses are now checked out from the Server and you possess all rights on your computer for the specified validity period for the commuter licenses. This means that you are enabled to work network-independent. The checked out licenses are no longer available to the other computers on the network.



You can however also return the commuter licenses before their expiry date. To do this, you need to connect to the Server, deactivate the checkboxes on the left and click the **Update licenses** button. All licenses are now made available on the Server and locked on your computer, i.e. you can now only use HiCAD/HELIOS if there is a connection to the License Server. The licenses made available again can now also be used from other workstations.



## Checking Out Commuter Licenses, without Network Connection

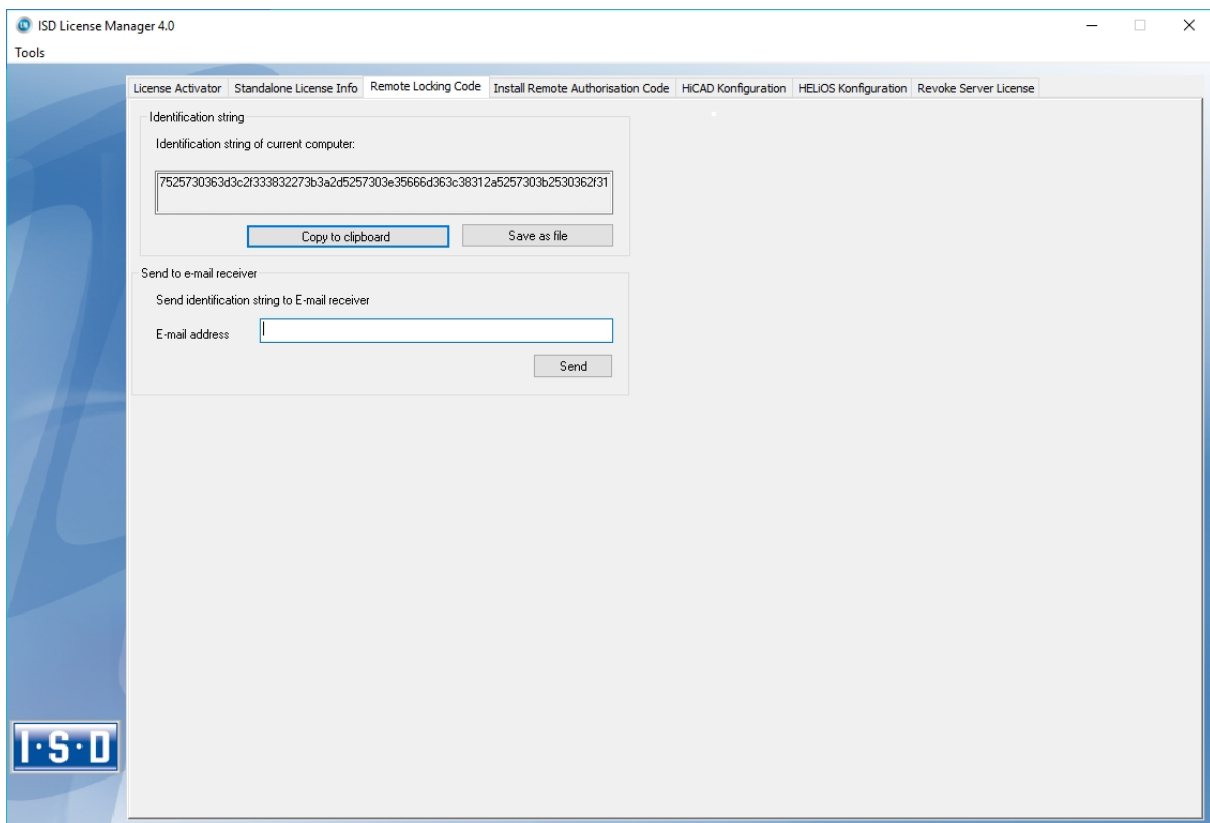
Commuter licenses can also be drawn from the License Server without an existing network connection. For this **Administrator rights** are required.

Commuter licenses checked out in this way cannot be returned to the License Server! This means that the commuter licenses that have been checked out from the Server are only (automatically) made available again after their expiry date.

Several steps are required for checking out without network connection - by the Administrator having a network connection to the License Server, as well as by the Client (that is, your laptop) having no network connection to the License Server.

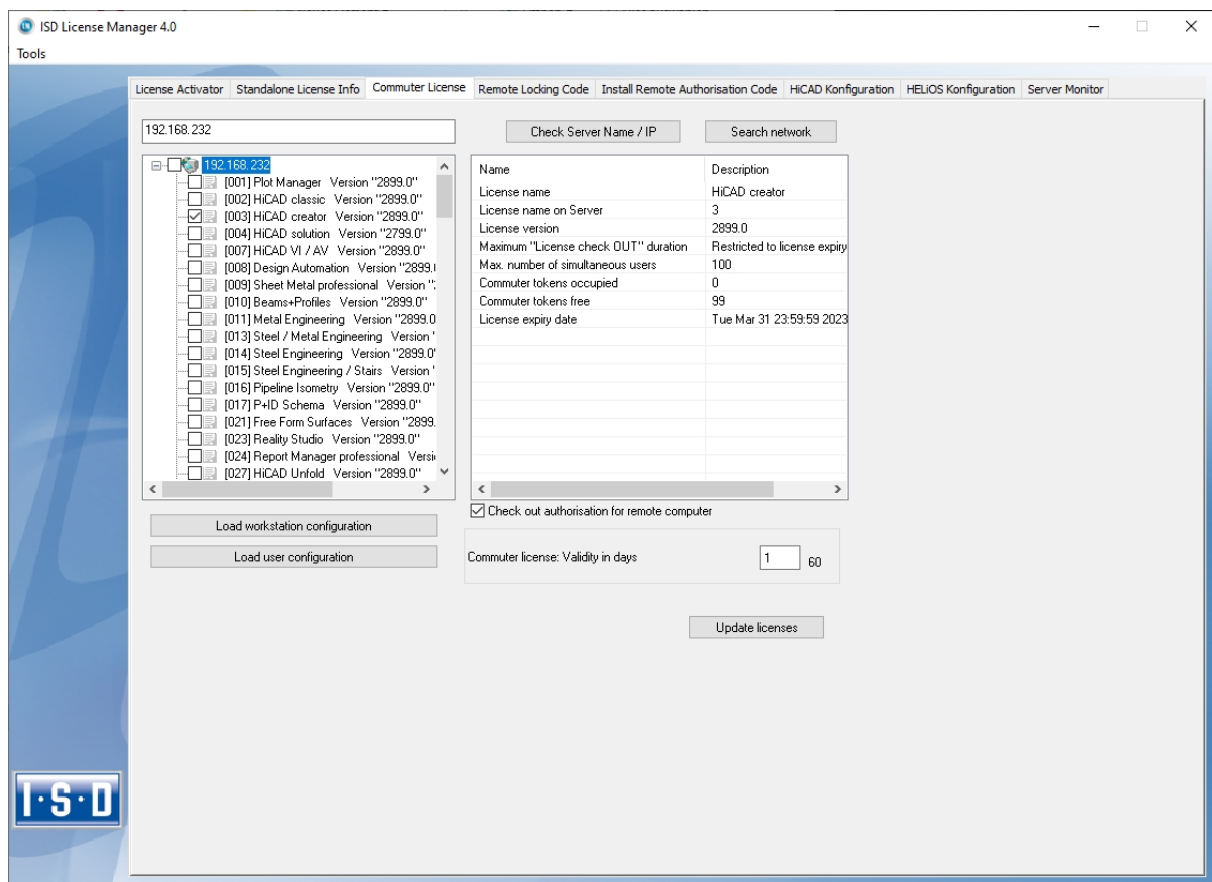
As long as commuter licenses are checked out in this way, it is not possible to update the network licenses on the server. The same applies when buying new modules/licenses and changing the configuration.

The Client starts the **ISD License Manager** tool, switches to the **Remote Locking Code** tab.



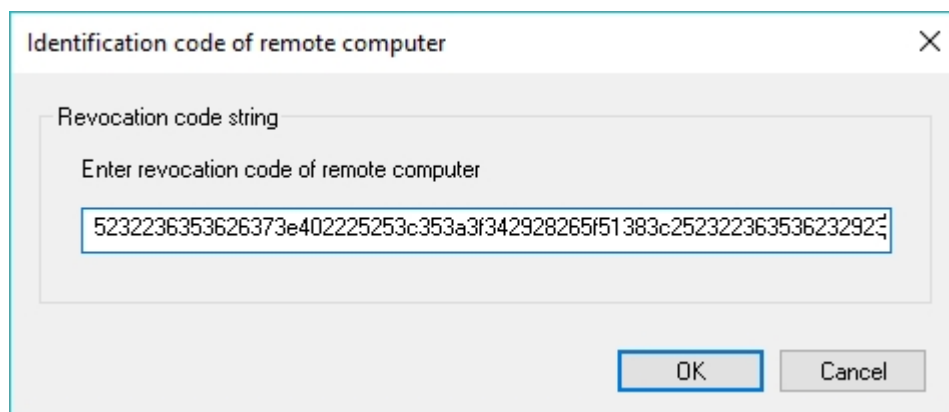
Then, the Client sends the generated character set to the Administrator (via E-mail or over the phone).

The Administrator starts the **ISD License Manager** and switches to the **Commuter License** tab.

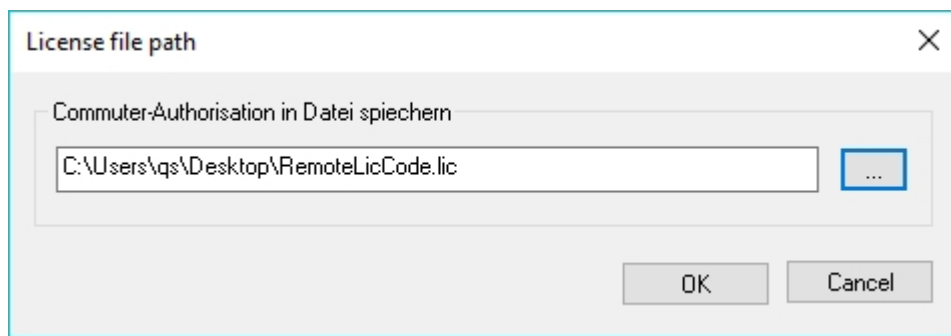


The License Server will be selected, and the required licenses (modules) are activated in the left window. In the **Commuter license: Validity in days** field, you enter the number of days that you want the commuter licenses to remain checked out from the Server. The maximum number of days is 60. By default (or if a "0" is entered), the value is set to 1. To checkout a remote commuter license the administrator now needs to activate the **Check out authorisation for remote computer** checkbox ☒. Administrator rights are required for this.

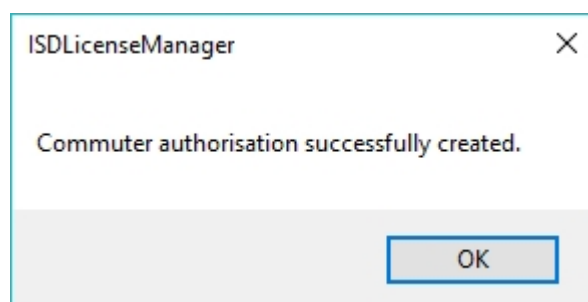
A click on the **Update licenses** button opens a new dialogue window, in which the administrator enters the character set received from the Client



After selecting **OK**, another dialogue opens.

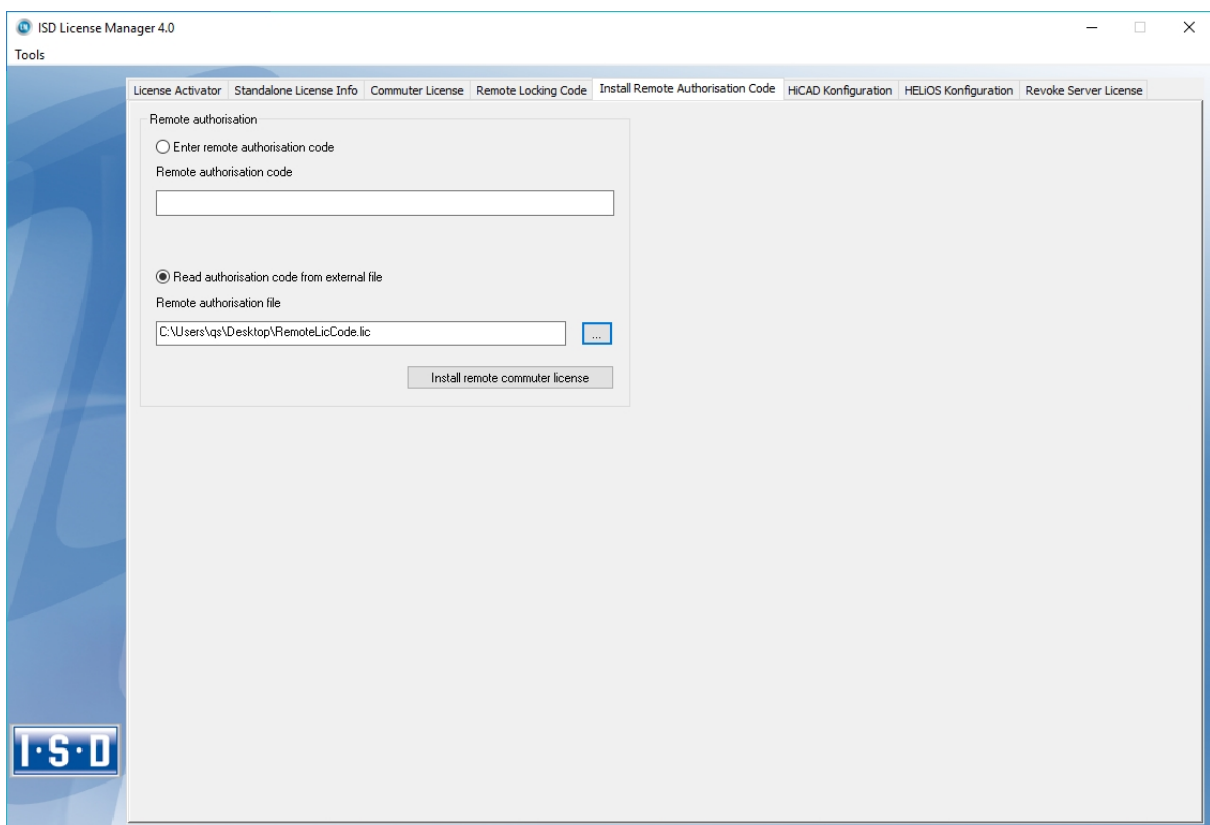


Here the Administrator enters the target path and the file name for the licenses to be swapped out. Make sure that a unique file name is used, for example, by including in the file name the host name of the remote computer and the expiry date.

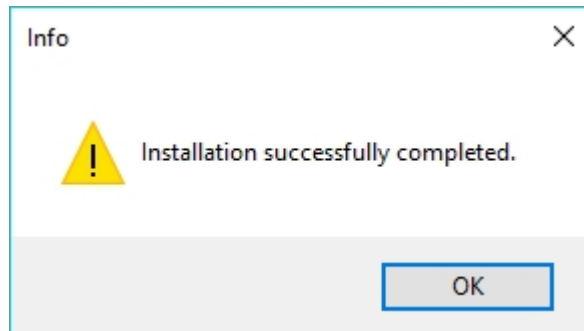


Click **OK** to check out the commuter licenses from the License Server and swap them out to a file, e.g. RemoteLicCode.lic.

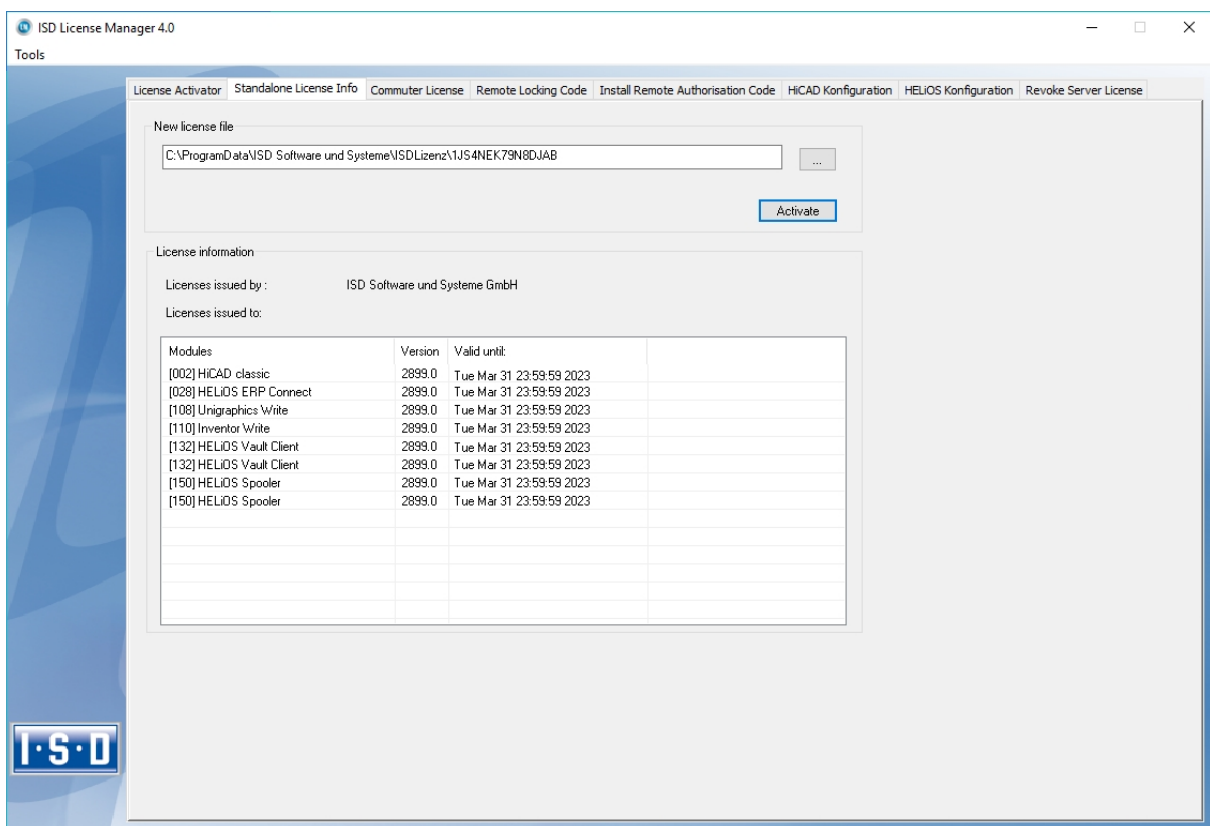
After receiving the file with the commuter licenses, the Client starts the **ISD License Manager** again and activates the **Install Remote Authorisation Code** tab.



Now the Client can install the received commuter licenses directly via file selection or via copying of the file contents. Click the **Install Remote Commuter License** button to install the Commuter Licenses on the Client.



After successful installation, the Client must switch to the **Standalone License Info** tab.



To update, the Client must click on the **Activate** button. The information which licenses are installed locally on the computer will then be provided to the Client.

#### **Legal notes**

© 2023 ISD ® Software und Systeme GmbH. All rights reserved.

This User Guide and the software described herein are provided in conjunction with a license and may only be used or copied in accordance with the terms of the license. The contents of this User Guide solely serve the purpose of information; it may be modified without prior notice and may not be regarded as binding for the ISD Software und Systeme GmbH. The ISD Software und Systeme GmbH does not assume any responsibility for the correctness or accuracy of the information provided in this document. No part of this document may be reproduced, saved to databases or transferred in any other form without prior written permission by the ISD Software und Systeme GmbH, unless expressly allowed by virtue of the license agreement.

All mentioned products are trademarks or registered trademarks of their respective manufacturers and producers.



## Germany

### Headquarter Dortmund

ISD Software und Systeme GmbH  
Hauert 4  
D-44227 Dortmund  
Tel. +49 231 9793-0  
info@isdgroup.de

### Sales office Hamburg

ISD Software und Systeme GmbH  
Strawinskyaße 2  
D-25337 Elmshorn  
Tel. +49 4121 740980  
hamburg@isdgroup.de

### Sales office Nuremberg

ISD Software und Systeme GmbH  
Nordostpark 7  
D-90411 Nuremberg  
Tel. +49 911 95173-0  
nuernberg@isdgroup.de

### Sales office Berlin

ISD Software und Systeme GmbH  
Paradiesstraße 208a  
D-12526 Berlin  
Tel. +49 30 634178-0  
berlin@isdgroup.de

### Sales office Hanover

ISD Software und Systeme GmbH  
Hamburger Allee 24  
D-30161 Hanover  
Tel. +49 511 616803-40  
hannover@isdgroup.de

### Sales office Ulm

ISD Software und Systeme GmbH  
Wilhelmstraße 25  
D-89073 Ulm  
Tel. +49 731 96855-0  
ulm@isdgroup.de

## International

### ISD Austria

ISD Software und Systeme GmbH  
Hafenstraße 47-51  
A-4020 Linz  
Tel. +43 732 21 04 22-0  
info@isdgroup.at

### ISD Benelux - Hertogenbosch

ISD Benelux B.V.  
Het Zuiderkruis 33  
NL-5215 MV 's-Hertogenbosch  
Tel. +31 73 6153-888  
info@isdgroup.nl

### ISD Benelux - Zwolle

ISD Benelux B.V.  
Grote Voort 293A  
NL-8041 BL Zwolle  
Tel. +31 73 6153-888  
info@isdgroup.nl

### ISD France

ISD Group France SAS  
10 -12 Boulevard Vivier Merle  
F-69393 Lyon  
Tel. +33 6 73 72 04 67  
info@isdgroup.fr

### ISD Switzerland

ISD Software und Systeme AG  
Rosenweg 2  
CH-4500 Solothurn  
Tel. +41 32 624 13-40  
info@isdgroup.ch

### ISD Switzerland

ISD Software und Systeme AG  
Rte du Jura 37 A, 4. Étage  
CH-1700 Fribourg  
Tel. +41 79 803 51 51  
info@isdgroup.ch

### ISD USA - North Carolina

ISD Group USA Inc.  
20808 N Main Street, Suite 101  
USA-Cornelius NC 28031  
Tel. +1 770 349 6321  
info@isdgroup.us

### ISD USA - Georgia

ISD Group USA Inc.  
5126 South Royal Atlanta Drive  
USA-Tucker GA 30084  
Tel. +1 770 349 6321  
info@isdgroup.us

[www.isdgroup.com](http://www.isdgroup.com)