



UNLIMITED PLM PERFORMANCE DEVELOPED BY ISD

Microsoft SQL Server 2017 Installation Guide

Version: 14 November 2022

Legal notes

© 2022 ISD ® Software und Systeme GmbH. All rights reserved.

This User Guide and the software described herein are provided in conjunction with a license and may only be used or copied in accordance with the terms of the license. The contents of this User Guide solely serve the purpose of information; it may be modified without prior notice and may not be regarded as binding for the ISD Software und Systeme GmbH. The ISD Software und Systeme GmbH does not assume any responsibility for the correctness or accuracy of the information provided in this document. No part of this document may be reproduced, saved to databases or transferred in any other form without prior written permission by the ISD Software und Systeme GmbH, unless expressly allowed by virtue of the license agreement.

All mentioned products are trademarks or registered trademarks of their respective manufacturers and producers.

Contents

1	Introduction	4
2	Installation of the Database Server	5
2.1	Installation of the Database Module	5
3	Setting up the SQL Server 2017	14
3.1	Setting Up the Conditions for Database Import	14
4	Importing the HELIOS Database	17
4.1	Installing the HELiOS Database Creator	17
4.2	Importing the Database with the HELiOS Database Creator	20
5	Defining the Permissions for the User hicad	23
6	Setting up the ODBC Connection	25
7	Establishing the HELiOS Connection	31

1 Introduction

The HELiOS - PDM - Module (document management, part management, Workflow, etc.) are based on a relational database. Before start of HELiOS, the Microsoft SQL database control system must be installed on the server, a database imported and the clients ODBC connection has to be established.

The following installation instructions refer to the installation of the English Version of SQL Server 2017 Standard Edition. Other editions may require minor variations in the installation process.

For detailed information about Microsoft SQL Server 2017, please refer to the Microsoft documentation, or the Help on the Microsoft website:

<https://msdn.microsoft.com/en-gb/library/ms143531.aspx>

Please note that the Microsoft SQL Server 2017 can only be used with HELiOS 2017 (SP2) or higher.

Please note:

- If you are working with HELiOS and ordered the SQL Server software via ISD, please only use the DVD or ISO file supplied by ISD for the installation of the SQL Server.
- If you want to install a German SQL Server on an operating system with a different language, please switch Language and Region to DE/DE; otherwise, the setup routine will not start. You can switch back again after installation. (The same applies to the combinations German/Switzerland and German/Austria)

2 Installation of the Database Server

2.1 Installation of the Database Module

Shortly after starting the setup, the installation screen will appear as shown below:

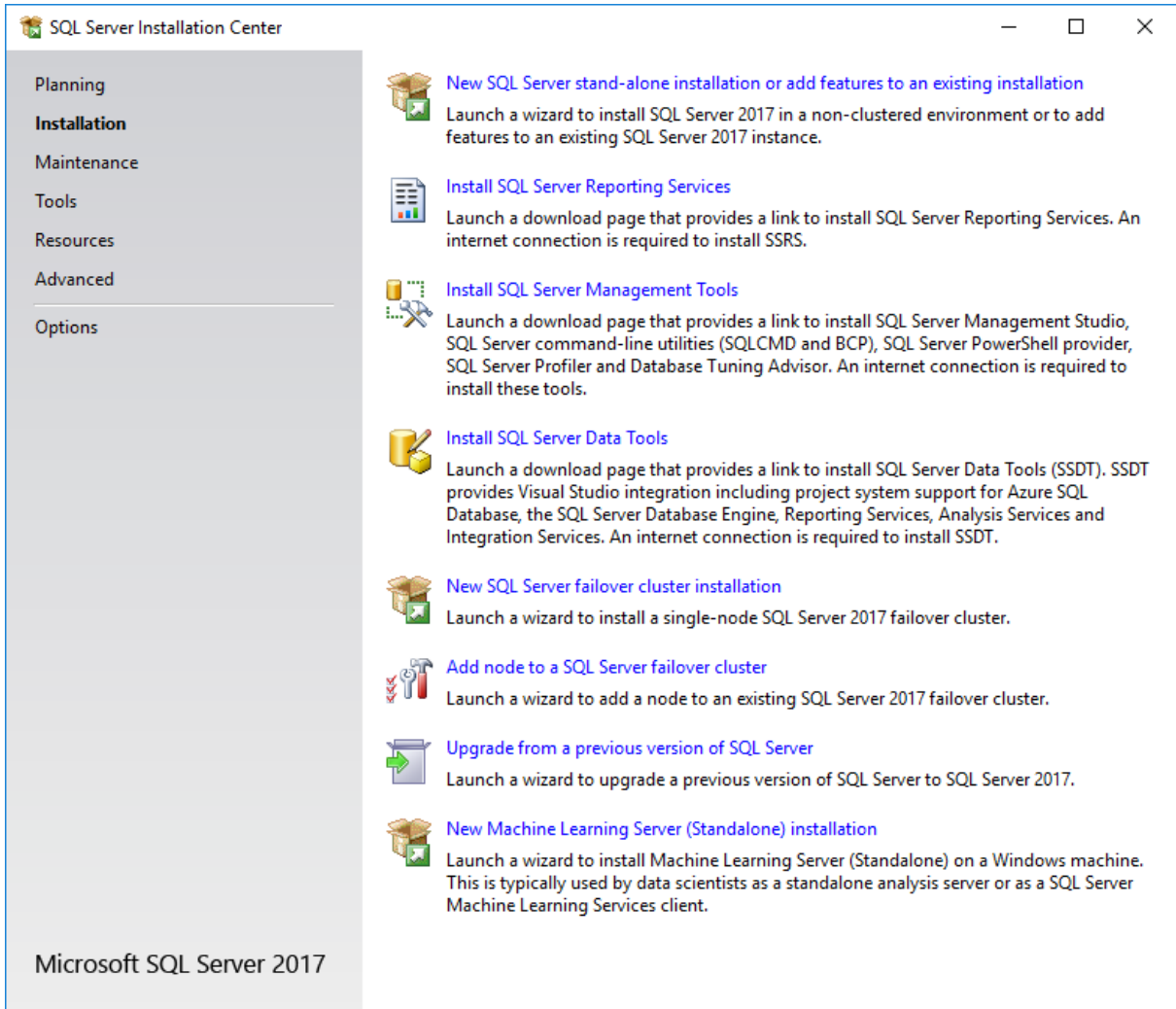


Image 1 Start page of SQL Server Installation Centre

On the left hand side of the window, select the **Installation** menu item.

Then, on the right side of the screen, click **New SQL Server stand-alone installation or add features to an existing installation**.

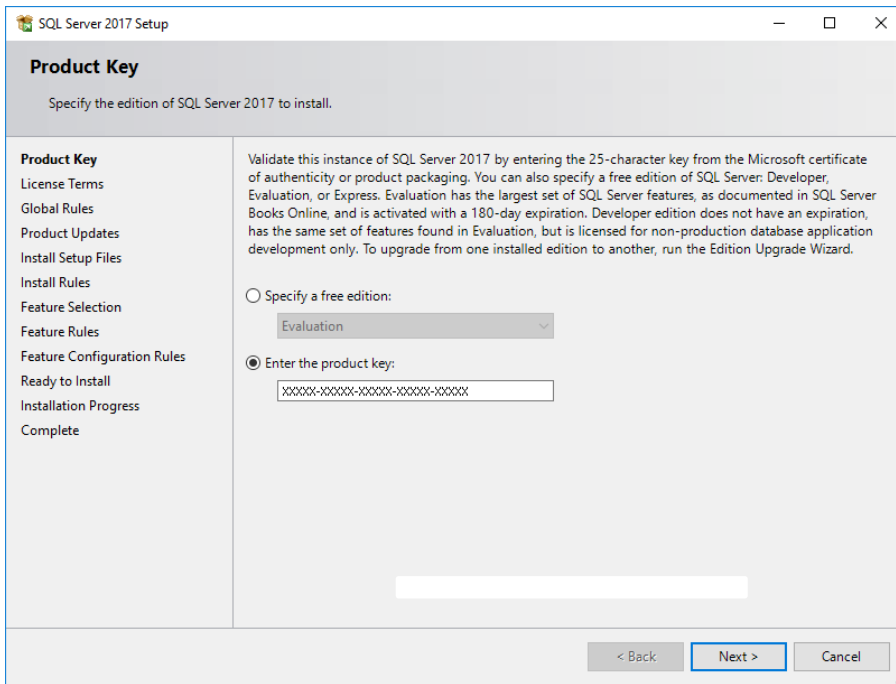


Image 2 Enter Product Key

Accept the license terms and click **Next**.

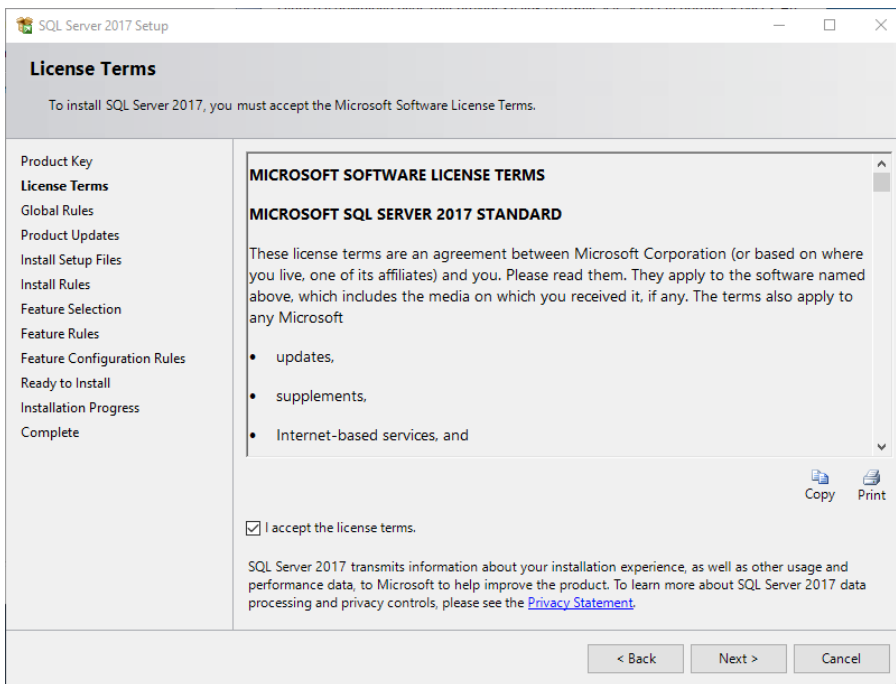


Image 3 Accept Licence Terms

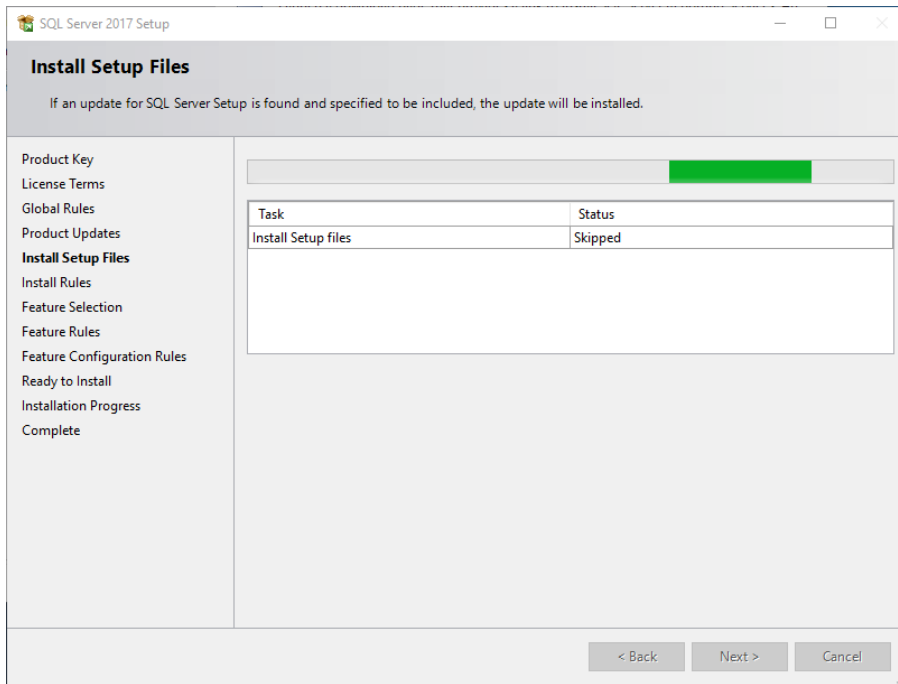


Image 4 Install Setup Files

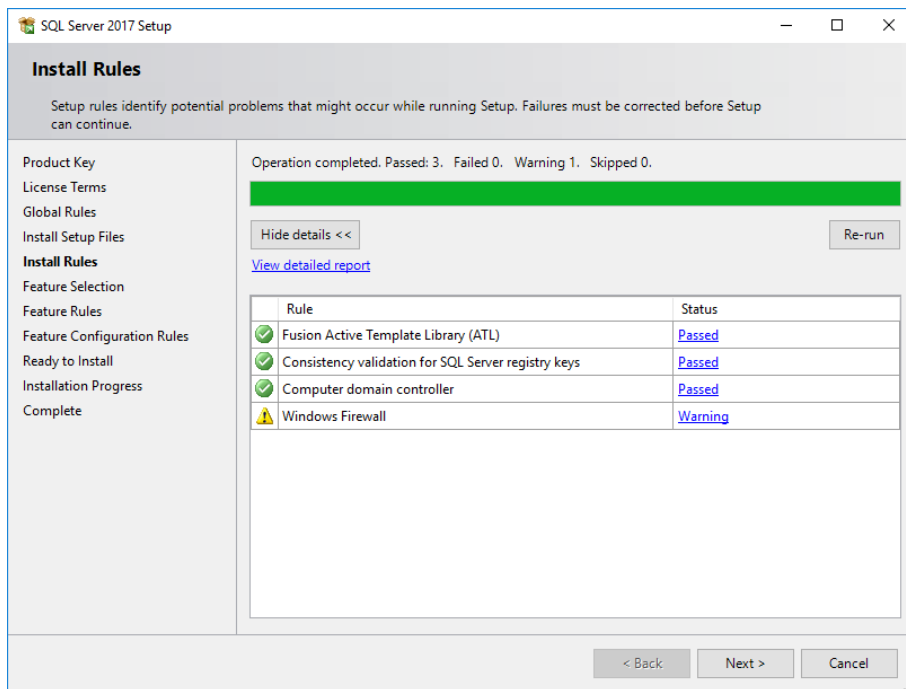


Image 5 Install Rules

Select the highlighted features:

- » Database Engine Services (Database module services)

Confirm the selection and click **Next**.

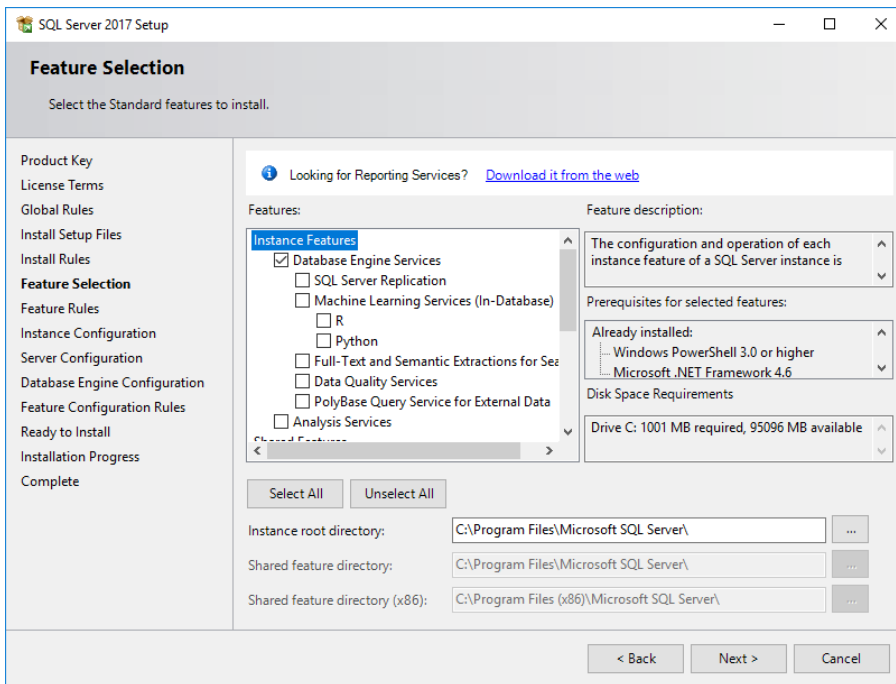


Image 6 Feature Selection

In the dialogue shown below, specify the name of the SQL Server instance. In this manual, the **Default instance** is used.

The screenshot shows the 'Instance Configuration' step of the SQL Server 2017 Setup wizard. The window title is 'SQL Server 2017 Setup'. The main heading is 'Instance Configuration' with the instruction: 'Specify the name and instance ID for the instance of SQL Server. Instance ID becomes part of the installation path.'

On the left is a navigation pane with the following steps: Product Key, License Terms, Global Rules, Install Setup Files, Install Rules, Feature Selection, Feature Rules, **Instance Configuration** (highlighted), Server Configuration, Database Engine Configuration, Feature Configuration Rules, Ready to Install, Installation Progress, and Complete.

The main area contains the following configuration options:

- Default instance
- Named instance:
- Instance ID:
- SQL Server directory: C:\Program Files\Microsoft SQL Server\MSSQL14.MSSQLSERVER
- Installed instances:

Instance Name	Instance ID	Features	Edition	Version
---------------	-------------	----------	---------	---------

At the bottom right are three buttons: '< Back', 'Next >', and 'Cancel'.

Image 7 Instance Configuration

Then, define under which service accounts the services are to be launched. Apply the settings shown below and click **Next**.

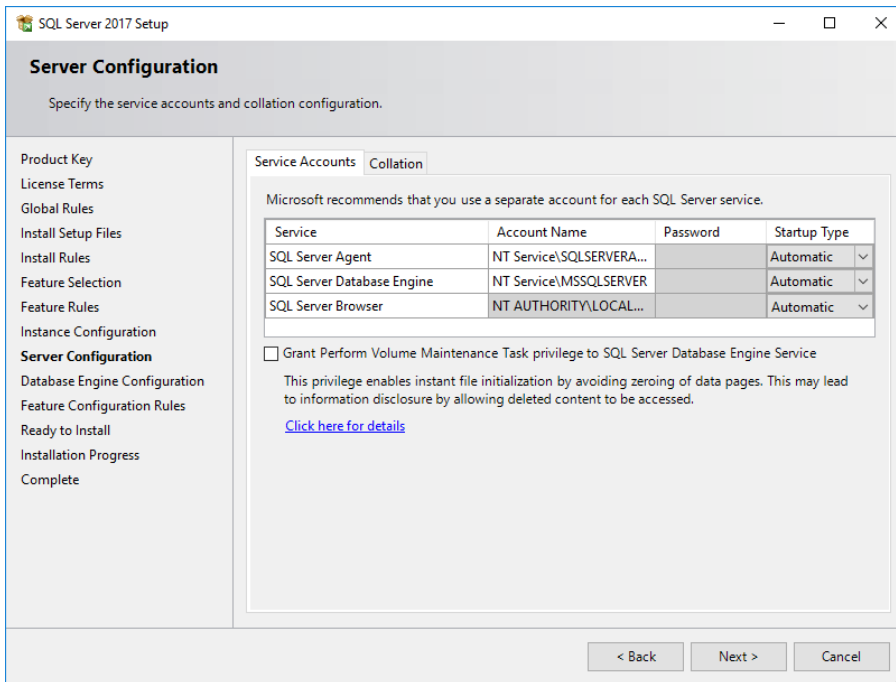


Image 8 Service Configuration - Service accounts: Startup Type is set to “Automatic”

After clicking **Next** the authentication mode shall be specified. Select the **Mixed mode**. Enter the password for the internal database administrator (**SA**). In the **Specify SQL Server administrators** field, enter the current user and the group of Windows – Administrators (will be added automatically as the case may be).

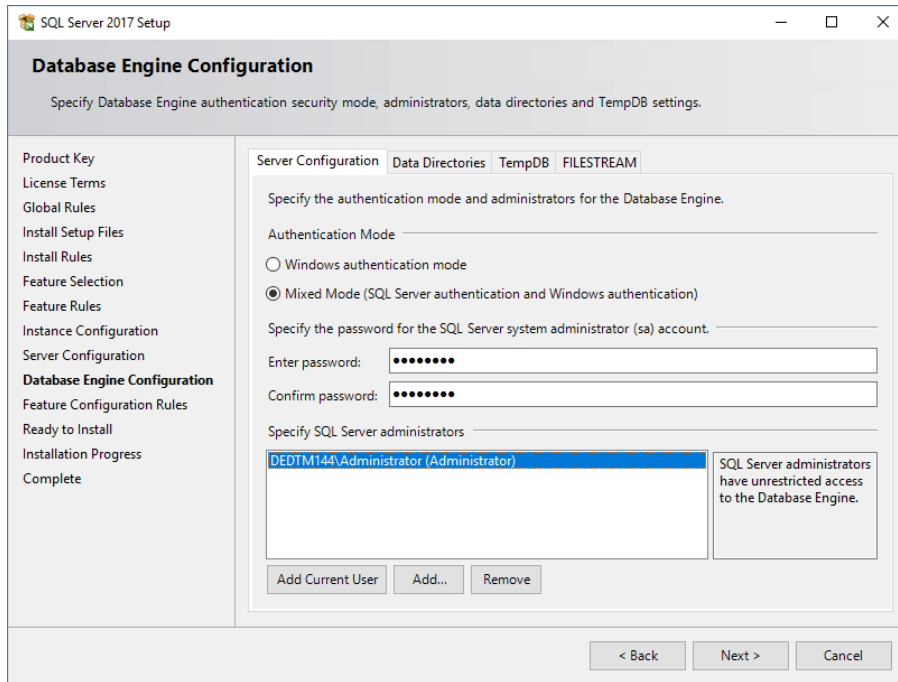


Image 9 Authentication mode

Now an overview of all settings which made by the user is shown. Click **Install** to start the installation of the SQL Server 2017.

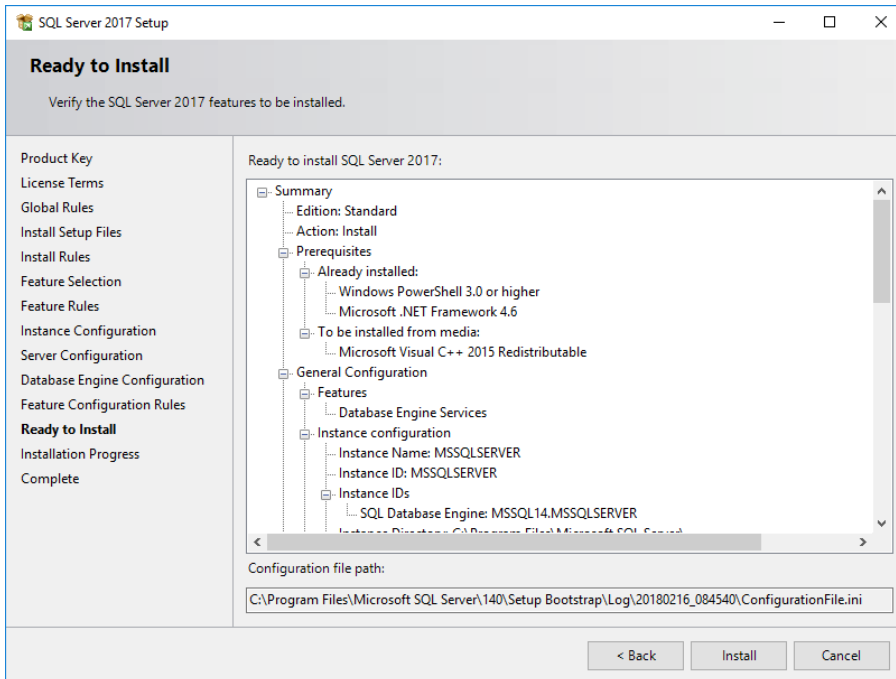


Image 10 Ready to Install

After successful installation, additional information and the status of functions will be shown.

Click **Close** to finalize the installation.

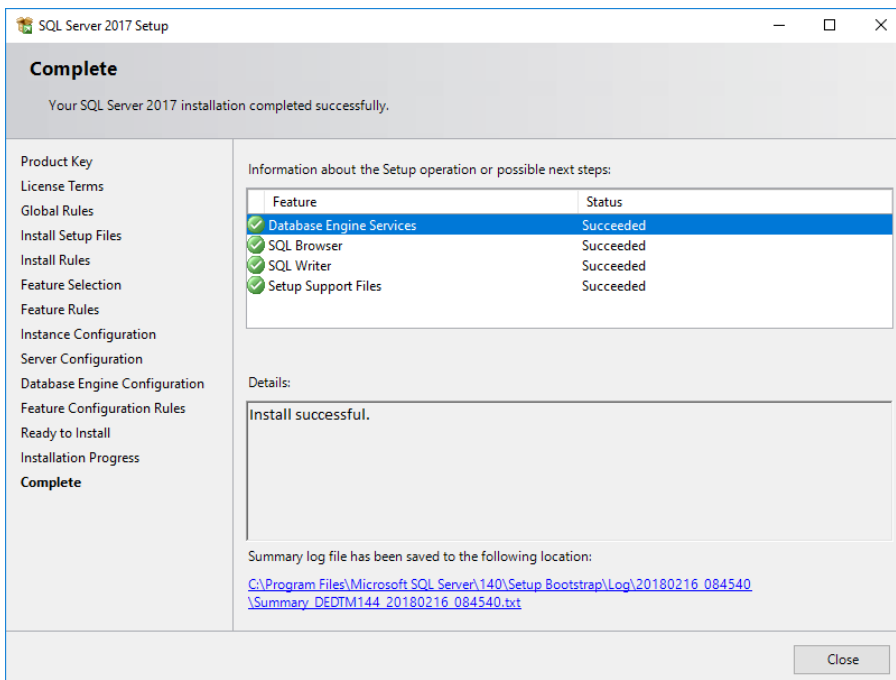


Image 11 Complete installation

To configure the SQL Server 2017 you need the **SQL Server Management Studio** tool. You can download the tool directly from the Microsoft website:

<https://msdn.microsoft.com/en-us/library/mt238290.aspx>

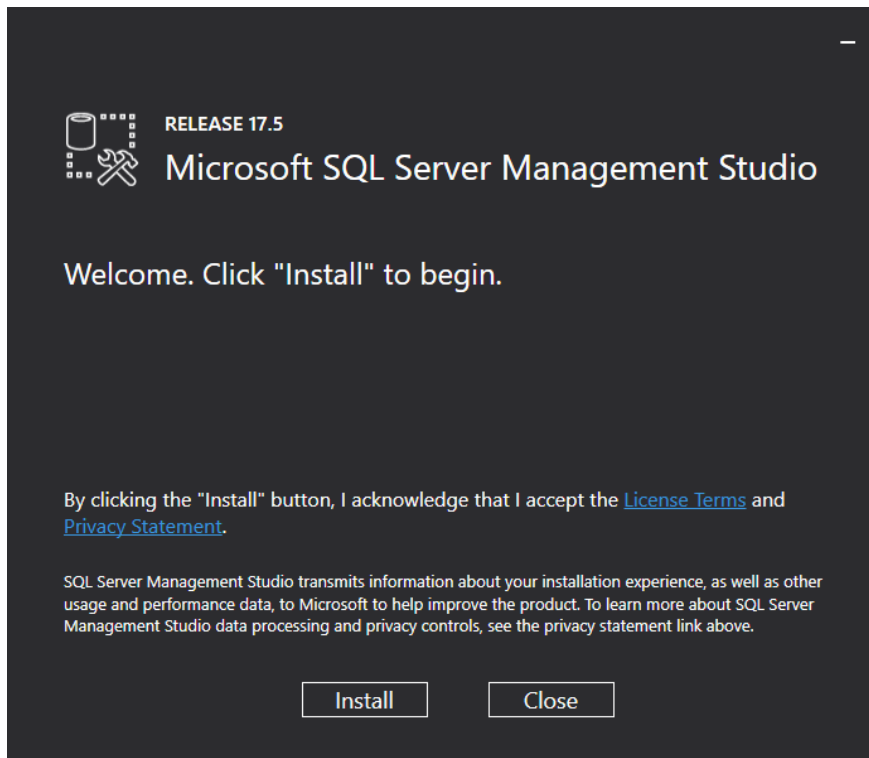


Image 12 Start installation of Microsoft SQL Server Management Studio
Click on **Install** to start the automatic installation.

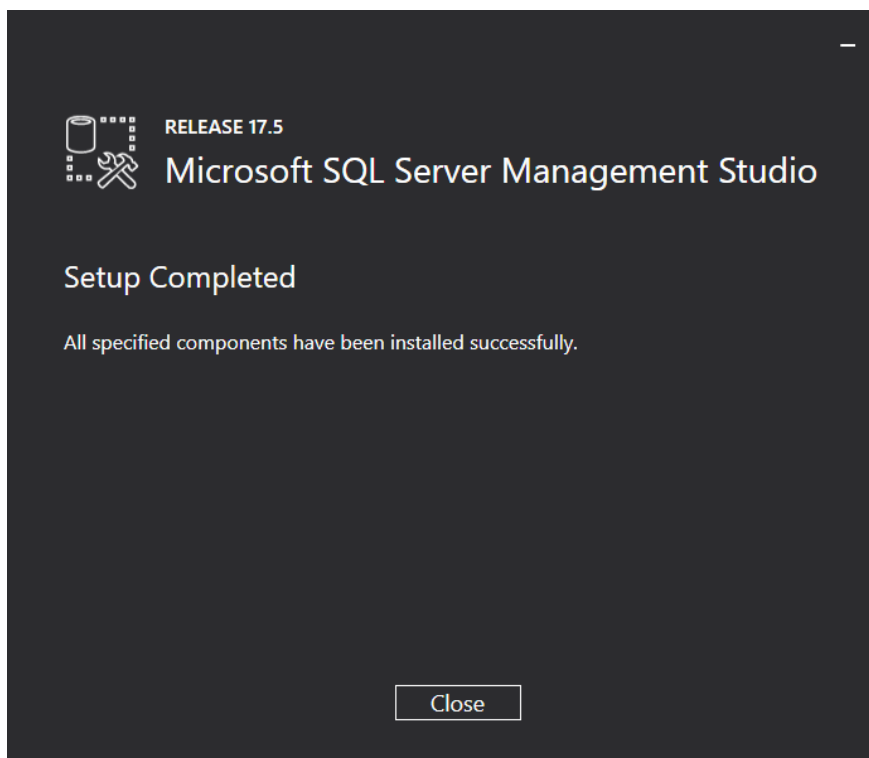


Image 13 Completed installation of Microsoft SQL Server Management Studio

3 Setting up the SQL Server 2017

3.1 Setting Up the Conditions for Database Import

To configure the SQL database, click the **Start** icon on the Windows task bar and select **All Programs > Microsoft SQL Server 2017 > SQL Server Management Studio** (it might have to be installed separately).

In the login window, specify the **Server name** in the same-named field. Enter **SQL Server Authentication** in the **Authentication** field, **sa** in the **Login** field and the password you specified during installation in the **Password** field. Click **Connect**:

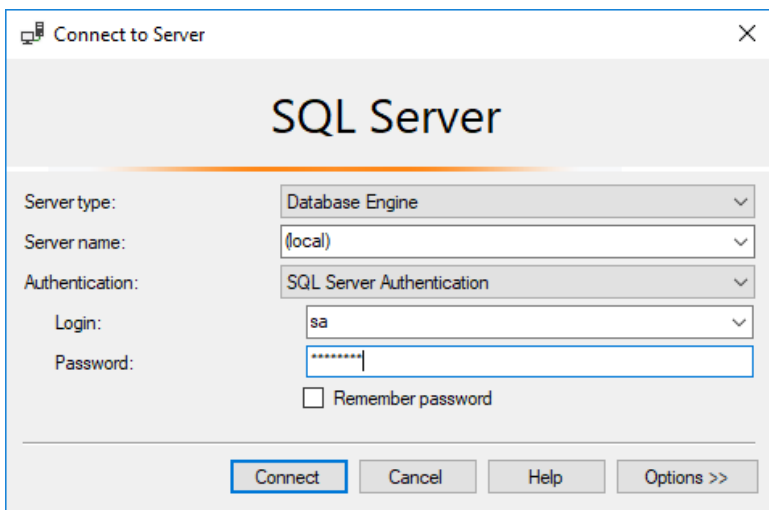


Image 14 Connect in the Management Studio

In the left area of the window, expand the folder **Security**, right-click the **Logins** sub-folder and select **New Login** in the context menu.

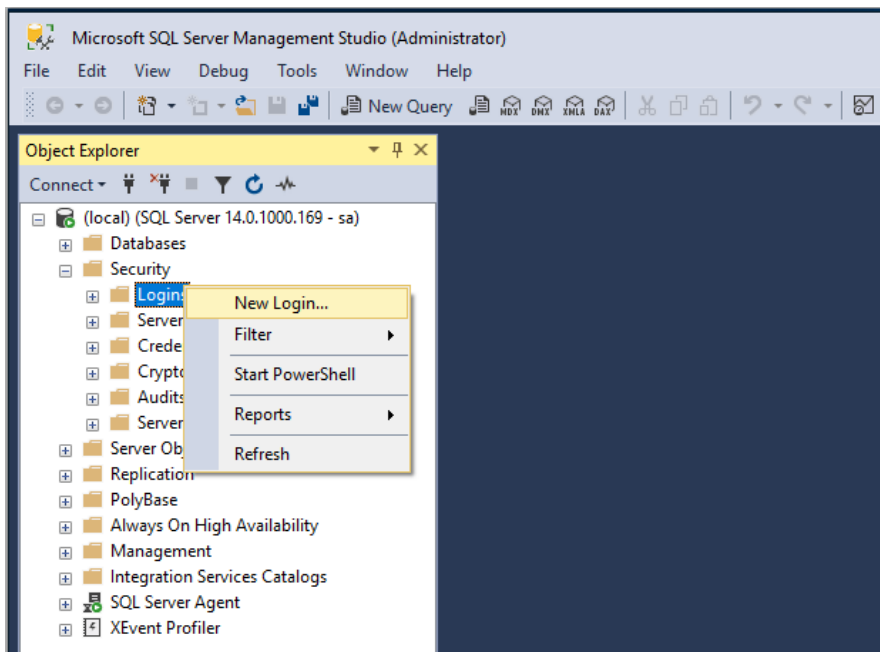


Image 15 Microsoft SQL Server Management Studio

The following window will be displayed:

The screenshot shows the 'Login - New' dialog box with the following configuration:

- General Tab:**
 - Login name: hicaad
 - Authentication: SQL Server authentication
 - Password: [masked]
 - Confirm password: [masked]
 - Specify old password:
 - Old password: [empty]
 - Enforce password policy:
 - Enforce password expiration:
 - User must change password at next login:
 - Mapped to certificate: [empty]
 - Mapped to asymmetric key: [empty]
 - Map to Credential:
 - Mapped Credentials table:

Credential	Provider
 - Default database: master
 - Default language: <default>
- Connection Section:**
 - Server: (local)
 - Connection: sa
 - [View connection properties](#)
- Progress Section:**
 - Ready

Image 16 Creating the User hicaad

Enter **hicaad** in the **Login name** field, activate the **SQL Server authentication** option and enter a password. Then, deactivate the **Enforce password policy** option and open the **User Mapping** menu.

Activate, as shown in the image below, the model database and enter **hicad** in the **Default Schema** column. Confirm with **OK**.

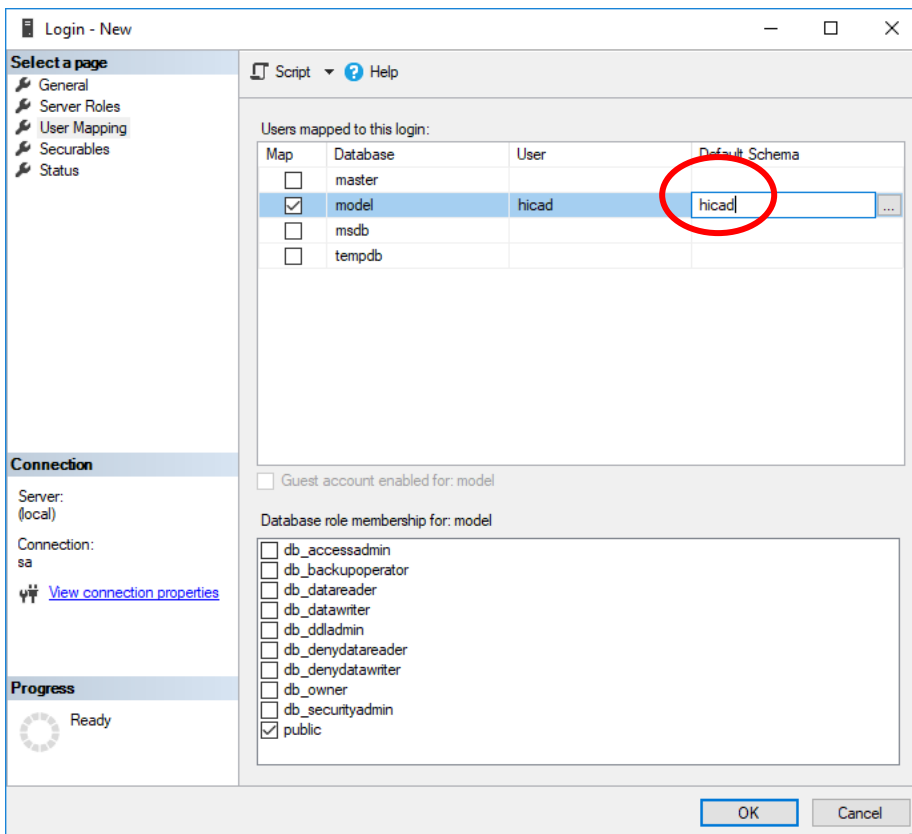


Image 17 User Mapping

4 Importing the HELIOS Database

4.1 Installing the HELIOS Database Creator

To install the **HELiOS Database Creator** click the same-named button in the HELiOS installation mask:

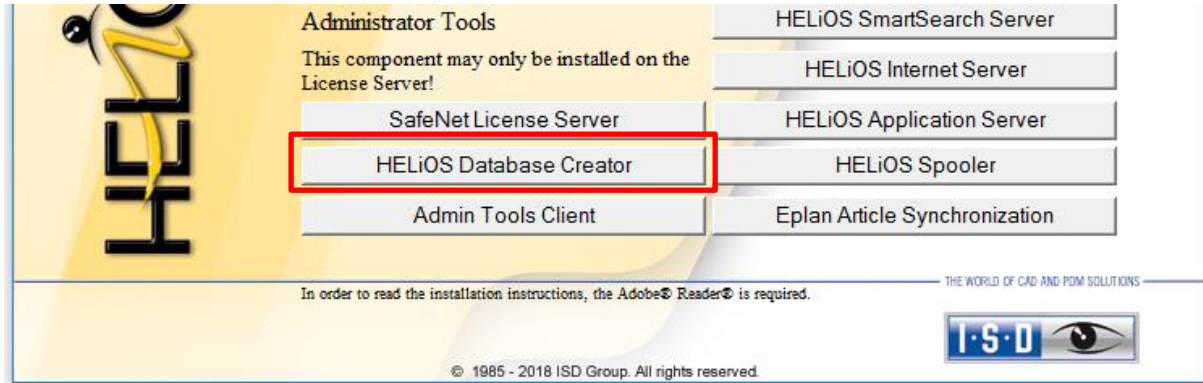


Image 18 Installation DVD – Installation mask with HELiOS Database Creator button

The Setup Wizard for the **HELiOS Database Creator** will be displayed:

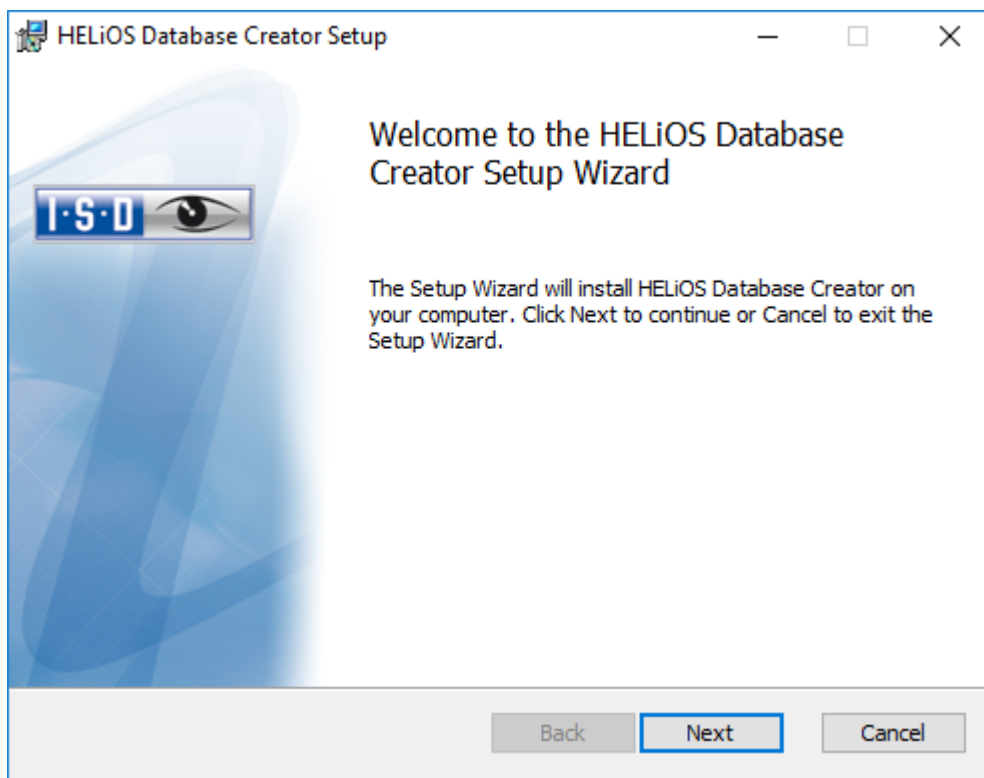


Image 19 Database Creator – Setup Wizard

Click **Next**.

Specify an installation directory for the HELIOS Database Creator, and click **Next**.

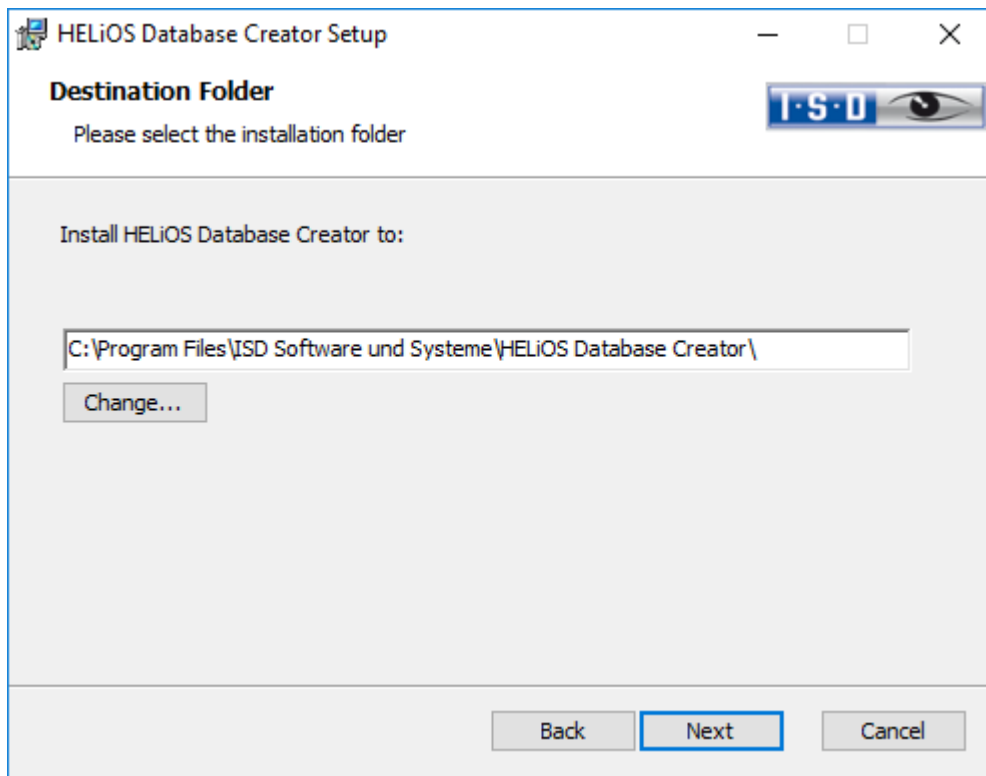


Image 20 Specify target folder

Click **Next**, then click **Install** to start the installation.

Click **Finish** to finalize the installation of the **HELIOS Database Creator**.

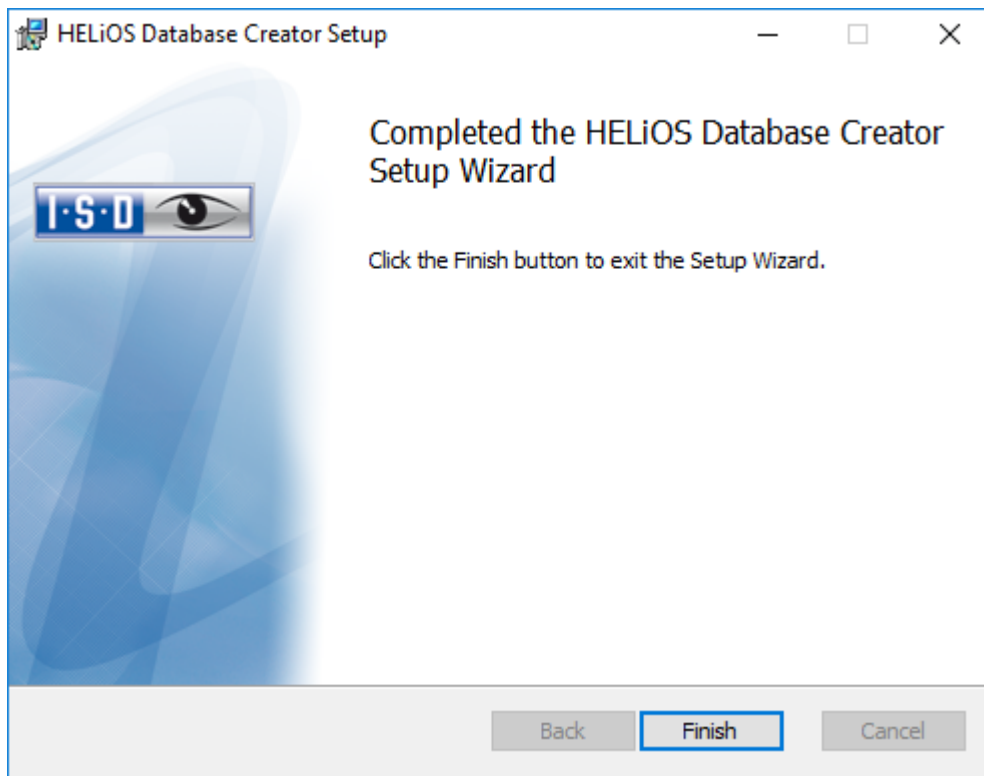


Image 21 Finalise HELIOS Database Creator installation

4.2 Importing the Database with the HELIOS Database Creator

Click the **Start** icon on the Windows task bar and select **All Programs > ISD Software und Systeme > HELIOS Administration > HELIOS Database Creator**.

After entering the user data – User: **sa**, the Password and the SQL Server to be connected – you will be logged in.

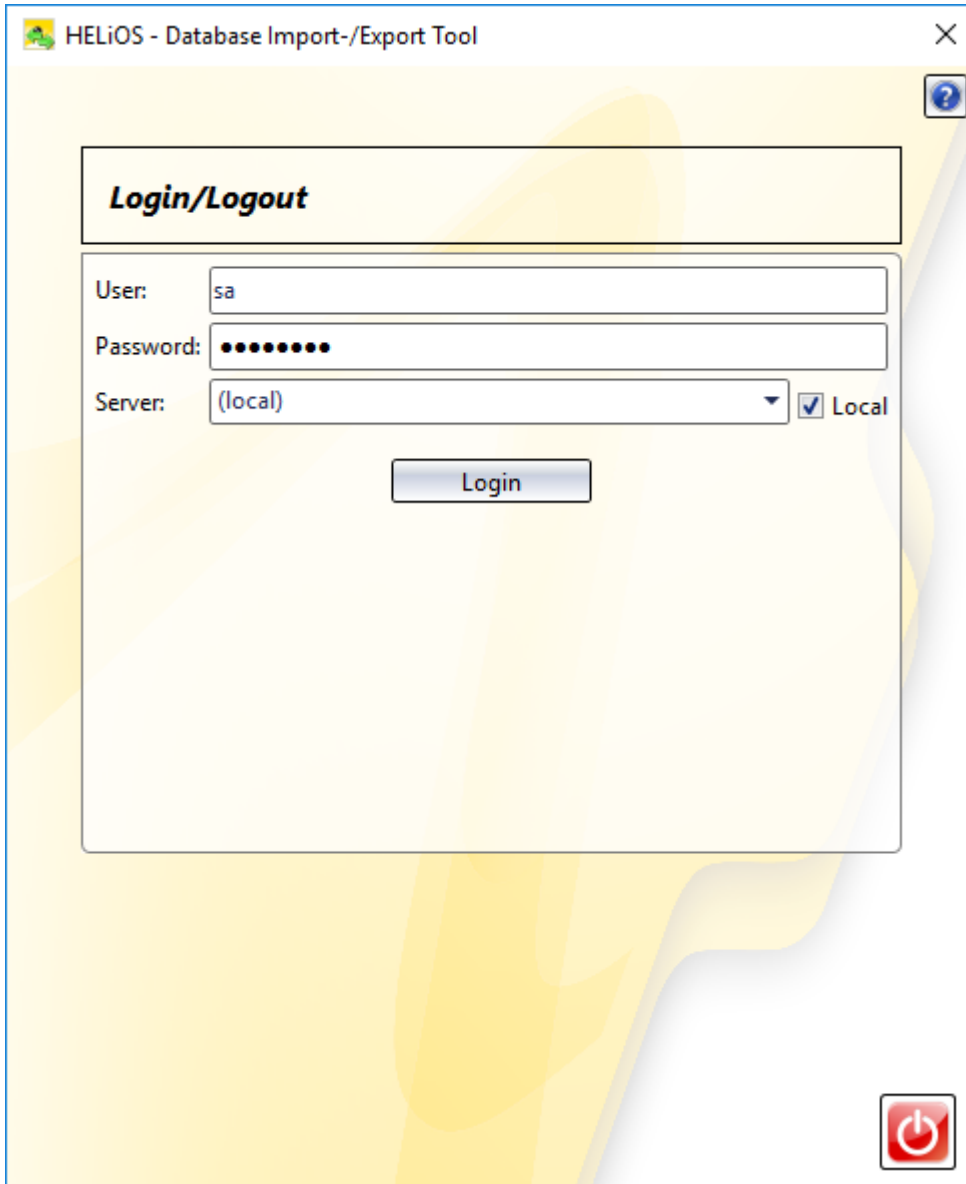


Image 22 HELIOS – Database Import/Export Tool

For older versions, it was necessary to copy the empty HELiOS database from the installation DVD (\Helios\Datenbanken\MsSql80\bauteil_sic) to a temporary directory of the server. As of HELiOS 2014 SP1 (Version 1901.1) it is also possible to directly import the database from the DVD to an empty directory, without this intermediate step.

For HELiOS versions older than HELiOS 2023 Service Pack 1 (V 2801) you will find the database in the subdirectory \Datenbanken\bauteil_sic\, from Version 2801 it is located in the directory \Databases\en\.

The log file for the process will be saved to *%Appdata%\Roaming\ISD Software und Systeme\HELiOS\bauteil_akt_\Helios_Export.log* and the configuration will be saved to *%Appdata%\Roaming\ISD Software und Systeme\Helios.DB\ImportExport\DB\ImportExportConfig.xml*

In this guide the database name **HELiOS** is used. Enter the export path and the database name and start the **Import** by clicking the same-named button.

Exports to directories which already contain files are no longer possible. In this case an appropriate error message will be displayed.

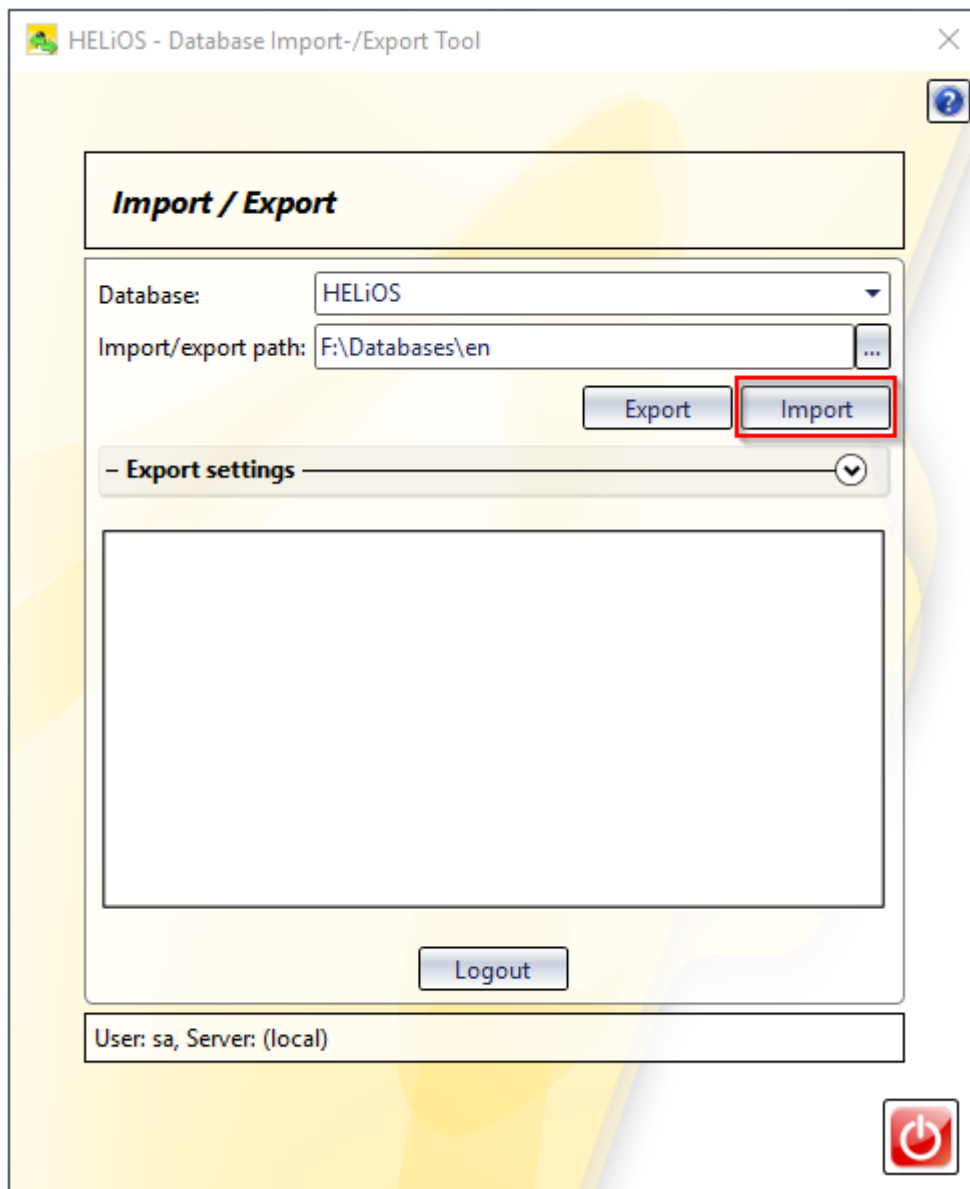


Image 23 Start import

The import procedure will be recorded in an import log:

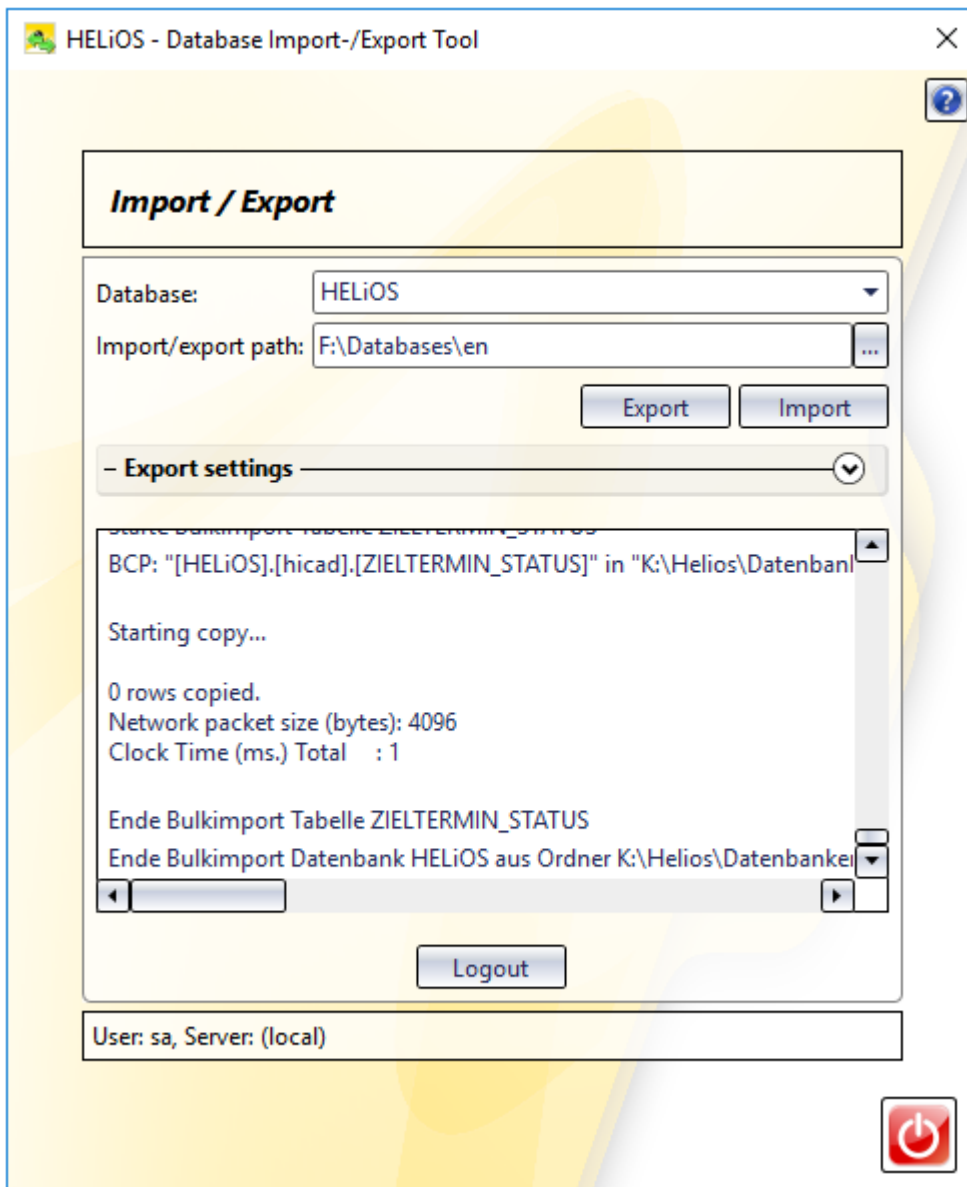


Image 24 Import log

If the import was successful, this will be indicated by a corresponding message. Confirm with **OK**.

Information

Operation successfully completed.

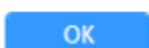


Image 25 Import successful

5 Defining the Permissions for the User **hicad**

Switch to the SQL Server Management Studio to define the user permissions for the Database **HELIOS**.

Expand the **Databases** folder, right-click **HELIOS** and select the **Properties** function in the context menu.

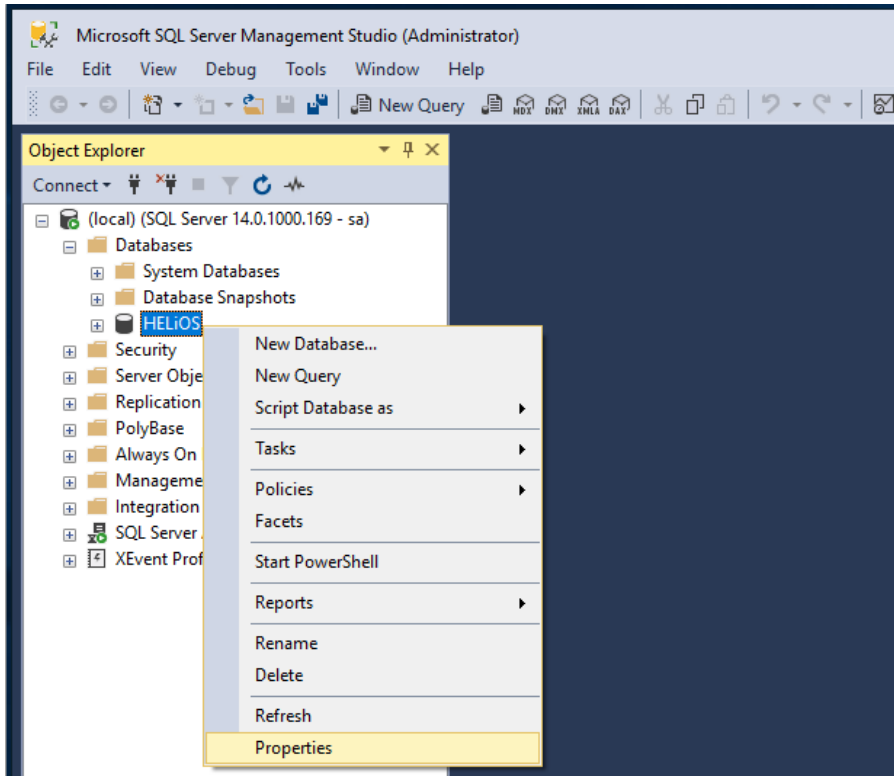


Image 26 Calling the Properties of HELIOS

On the left side of the window, select **Permissions**. Define the permissions for the user **hica**.

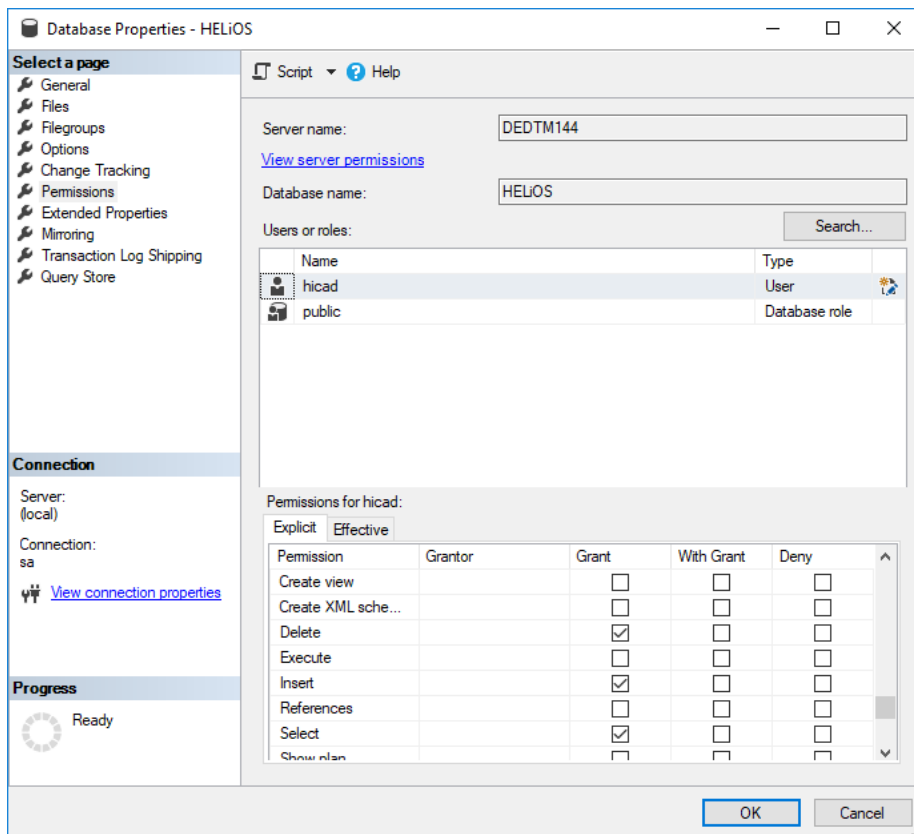


Image 27 Permissions for hica

In the list of permissions, grant the following permissions:

- » Update
- » Alter
- » Select
- » Insert
- » Delete
- » Create table
- » Connect

6 Setting up the ODBC Connection

To set up the ODBC connection for the clients, click the **Start** icon on the Windows task bar and select **Control Panel > Administrative Tools > Data Sources (ODBC)**.

The ODBC data source can be set up either as a **System DSN** (by an administrator) which will be available to all users of the computer, or as a User DSN which will only be available for the user who has created it. The procedure for both options is identical.

In the ODBC Data Source Administrator, click the **Add** button.

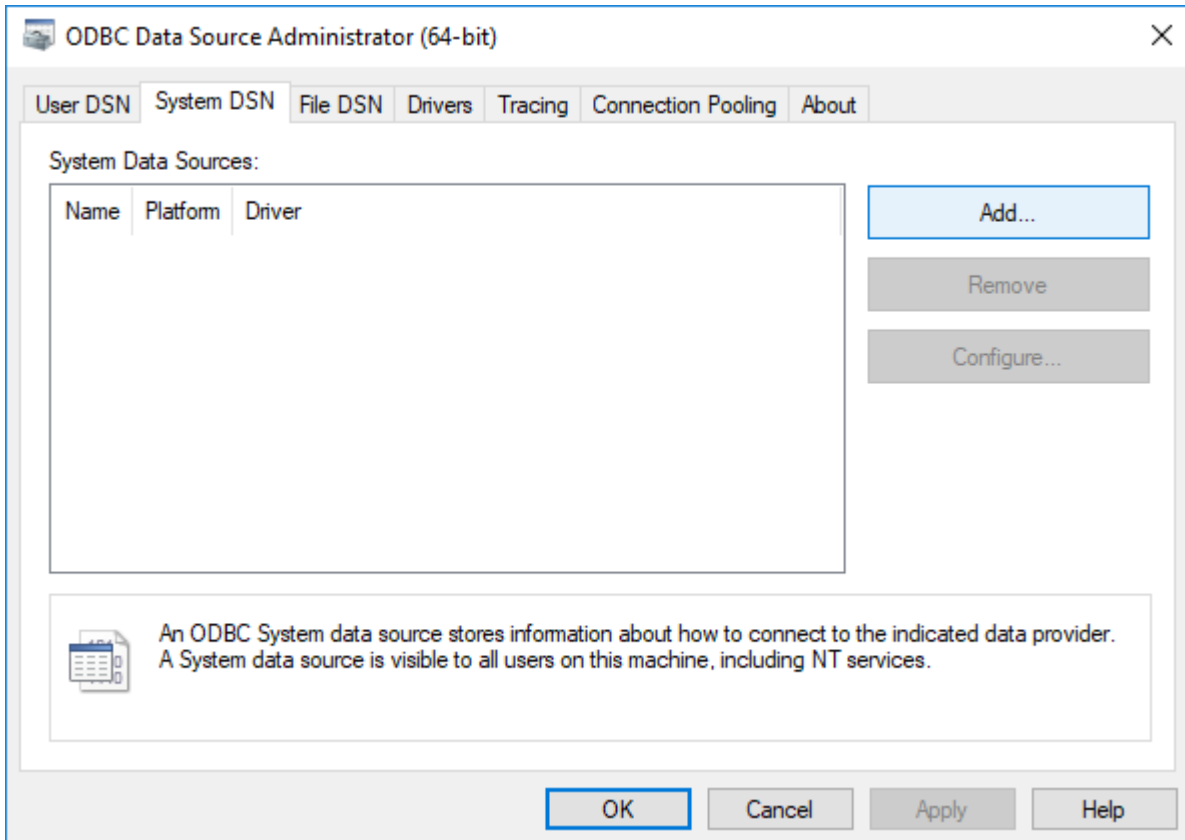


Image 28 ODBC Data Source Administrator

In the **Create Data Source** dialogue window, select the **SQL Server Native Client 11.0** and click **Finish**.

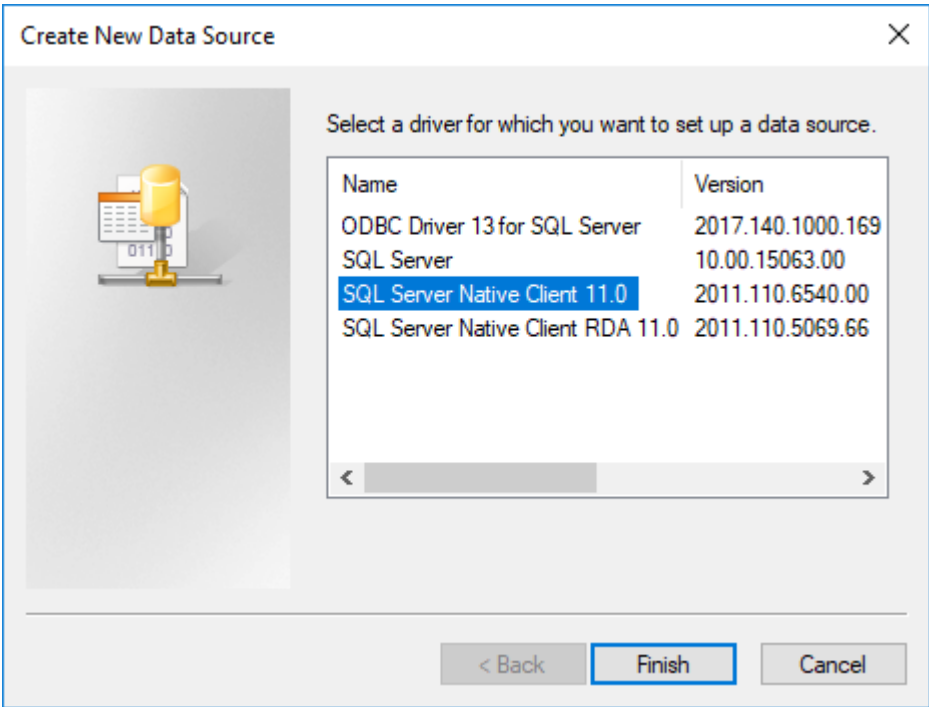
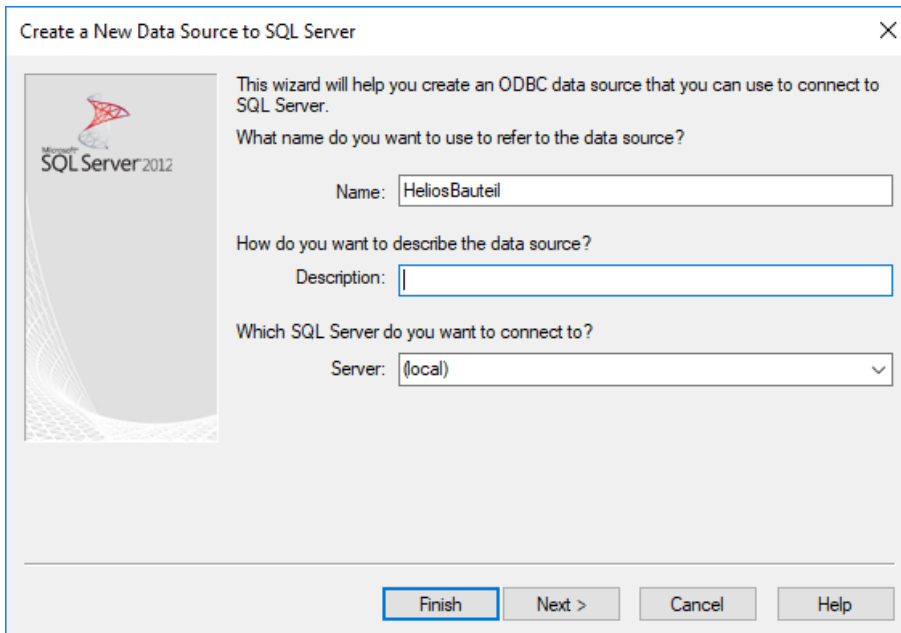


Image 29 Select ODBC driver

Now enter the name of the data source (in the following **HeliosBauteil**), and enter the name of the database server or select it from the list. Confirm your entries with **Next**:



Create a New Data Source to SQL Server

This wizard will help you create an ODBC data source that you can use to connect to SQL Server.

What name do you want to use to refer to the data source?

Name:

How do you want to describe the data source?

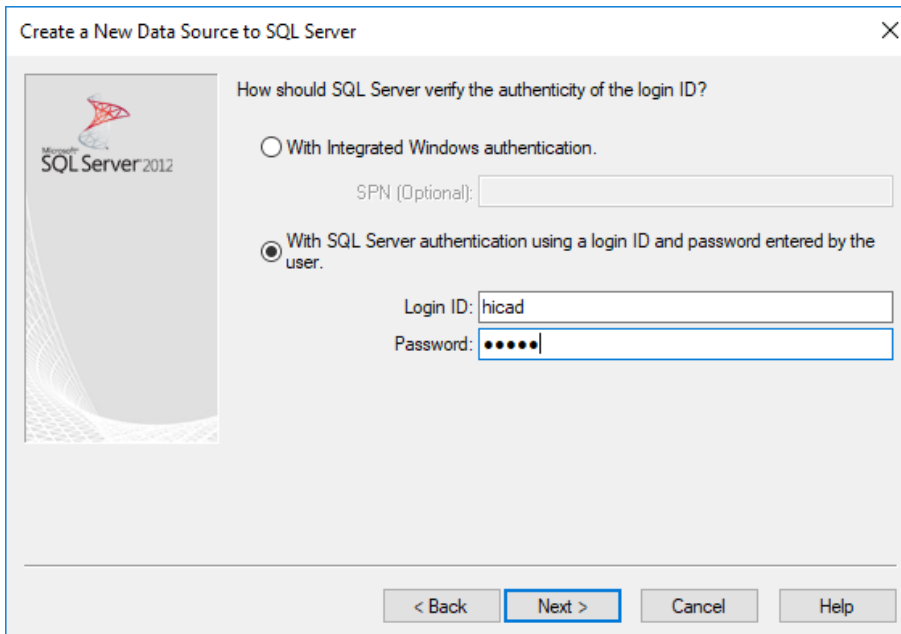
Description:

Which SQL Server do you want to connect to?

Server:

Image 30 Definition of the data source

Activate the **With SQL Server authentication...** option, enter **hacad** in the **Login ID** field and your **Password** in the same-named field below:



Create a New Data Source to SQL Server

How should SQL Server verify the authenticity of the login ID?

With Integrated Windows authentication.

SPN (Optional):

With SQL Server authentication using a login ID and password entered by the user.

Login ID:

Password:

Image 31 User input

Activate the **Change the default database to:** checkbox and select the **HELIOS** database. All other options must correspond to those shown in the image below:

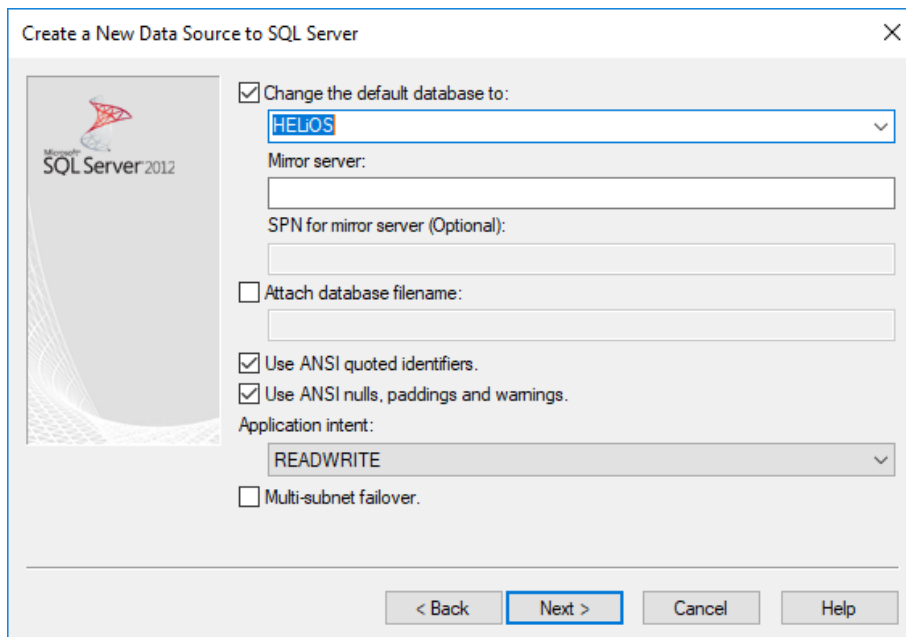


Image 32 Database selection

Deactivate all options and click **Finish** to finalize the creation of the connection.

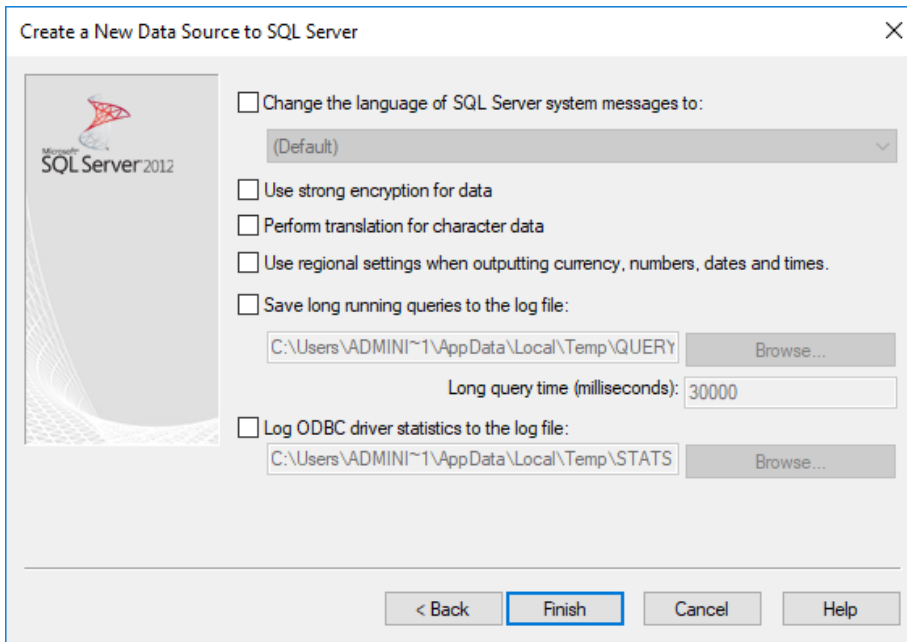


Image 33 Settings for ODBC connection

The window below offers the option to test the data source and completely finalize the creation by clicking **OK**. The ODBC Data Source Administrator can now be closed as well.

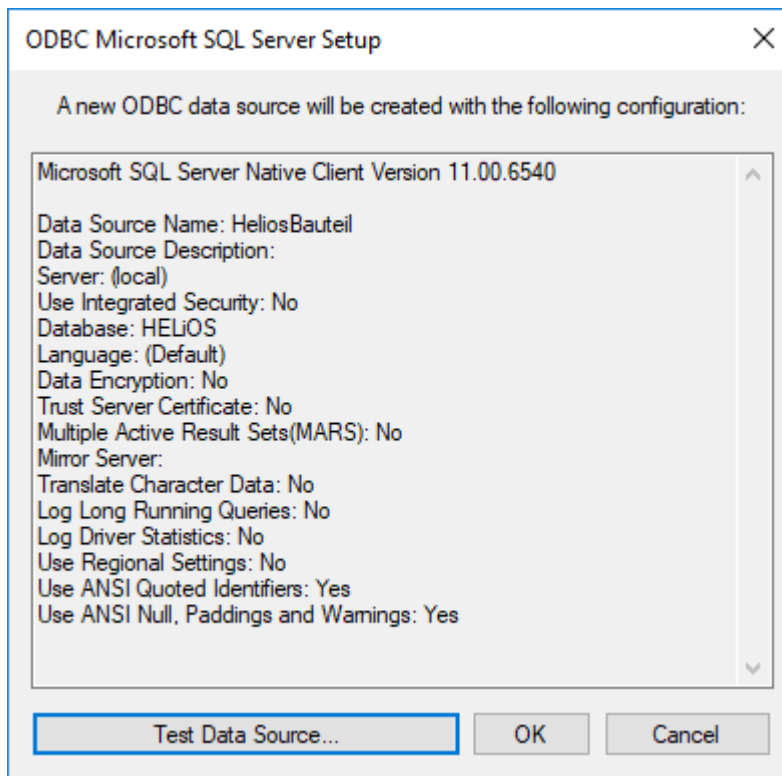


Image 34 Testing the data source and complete finalization of the creation

7 Establishing the HELiOS Connection

Finally, you need to tell HELiOS the name of the data source you have defined in the previous chapter. Click the **Start** icon of the Windows task bar and select **All Programs > ISD Software und Systeme > Administration > DB Manager**. Activate the **Connections** tab:

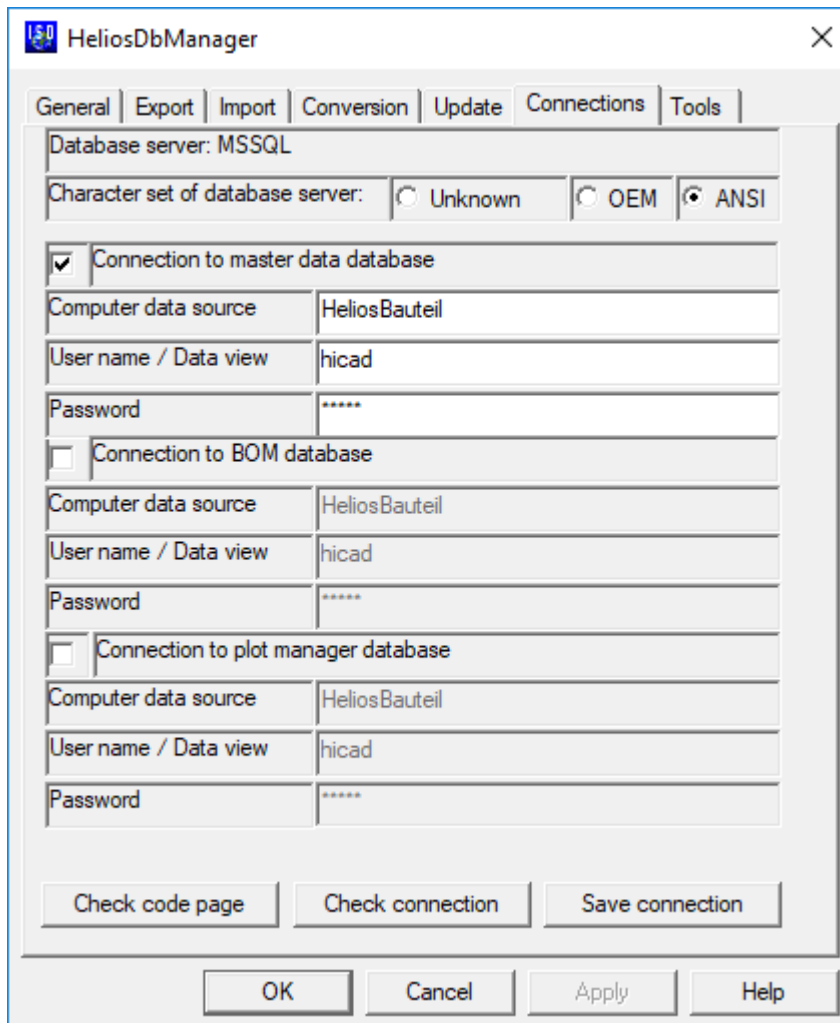


Image 35 DB Manager

Important notes on the DB Manager:

Please note the setting for **Character set of database server**: Here, it is important that you select the **ANSI** option. Then, activate the **Connection to master data database** checkbox and enter the previously defined name of the ODBC data source in the **Computer data source** field, **hacad** in the **User name** field, and your Password in the same-named field. The setting options for the “Connection to plot manager database” are only there for historical reasons and are of no relevance.

Click **Save connection** to save your settings, then close the DB Manager with **OK**.

All steps required for the installation are now completed. You can now start HELiOS.



Germany

Headquarter Dortmund

ISD Software und Systeme GmbH
Hauert 4
D-44227 Dortmund
Tel. +49 231 9793-0
info@isdgroup.de

Sales office Hamburg

ISD Software und Systeme GmbH
Strawinskystraße 2
D-25337 Elmshorn
Tel. +49 4121 740980
hamburg@isdgroup.de

Sales office Nuremberg

ISD Software und Systeme GmbH
Nordostpark 7
D-90411 Nürnberg
Tel. +49 911 95173-0
nuernberg@isdgroup.de

Sales office Berlin

ISD Software und Systeme GmbH
Paradiesstraße 208a
D-12526 Berlin
Tel. +49 30 634178-0
berlin@isdgroup.de

Sales office Hanover

ISD Software und Systeme GmbH
Hamburger Allee 24
D-30161 Hannover
Tel. +49 511 616803-40
hannover@isdgroup.de

Sales office Ulm

ISD Software und Systeme GmbH
Wilhelmstraße 25
D-89073 Ulm
Tel. +49 731 96855-0
ulm@isdgroup.de

International

ISD Austria

ISD Software und Systeme GmbH
Hafenstraße 47-51
A-4020 Linz
Tel. +43 732 21 04 22-0
info@isdgroup.at

ISD Benelux - Zwolle

ISD Benelux B.V.
Grote Voort 293A
NL-8041 BL Zwolle
Tel. +31 73 6153-888
info@isdgroup.nl

ISD Switzerland - Solothurn

ISD Software und Systeme AG
Rosenweg 2
CH-4500 Solothurn
Tel. +41 32 624 13-40
info@isdgroup.ch

ISD USA - North Carolina

ISD Group USA Inc.
20808 N Main Street, Suite 101
USA-Cornelius NC 28031
Tel. +1 770 349 6321
info@isdgroup.us

ISD Benelux - Hertogenbosch

ISD Benelux B.V.
Het Zuiderkruis 33
NL-5215 MV 's-Hertogenbosch
Tel. +31 73 6153-888
info@isdgroup.nl

ISD France

ISD Group France SAS
10 -12 Boulevard Vivier Merle
F-69393 Lyon
Tel. +33 6 73 72 04 67
info@isdgroup.fr

ISD Switzerland - Fribourg

ISD Software und Systeme AG
Rte du Jura 37 A, 4. Étage
CH-1700 Fribourg
Tel. +41 79 803 51 51
info@isdgroup.ch

ISD USA - Georgia

ISD Group USA Inc.
5126 South Royal Atlanta Drive
USA-Tucker GA 30084
Tel. +1 770 349 6321
info@isdgroup.us