



UNLIMITED CAD PERFORMANCE DEVELOPED BY ISD

Check out licenses

Version 2025

What is to be done?

Date of issue: 12/12/2024

isdgroup.com



THE WORLD OF CAD AND PDM SOLUTIONS

TOC

Check Out Licenses	4
A concrete use case.....	4
Solution.....	4
Proceed as follows.....	4
Checking Out Commuter Licenses, with Network Connection	5
Checking Out Commuter Licenses, without Network Connection	9

Check Out Licenses

A concrete use case

Let's assume that your company has a Network Commuter license with 4 licenses. On Friday you want to take your laptop home to continue working during the weekend.

What are the steps to get the license on your laptop and what do you need to do to return the license on Monday?

Solution

On Friday before closing time, e.g. at 5 pm, check out a license for 2 days. This license is valid for 2 days from that time until 23:59 on the last day. That means in this case you can use the license on your laptop until 23:59 on Sunday evening. After that it is automatically available again on the server. So you do not have to take any additional steps on Monday in the office.

Prerequisite: HiCAD must have been installed on your laptop.

Proceed as follows

Since your company has a Network Commuter license, network licenses can be used even if there is no network connection from the workstation (e.g. your laptop) to the server.

This gives you two options for obtaining a Commuter license for the weekend:

- direct check out from the License Server
- Check-out from the license server without network connection. For this you need the support of the Administrator.

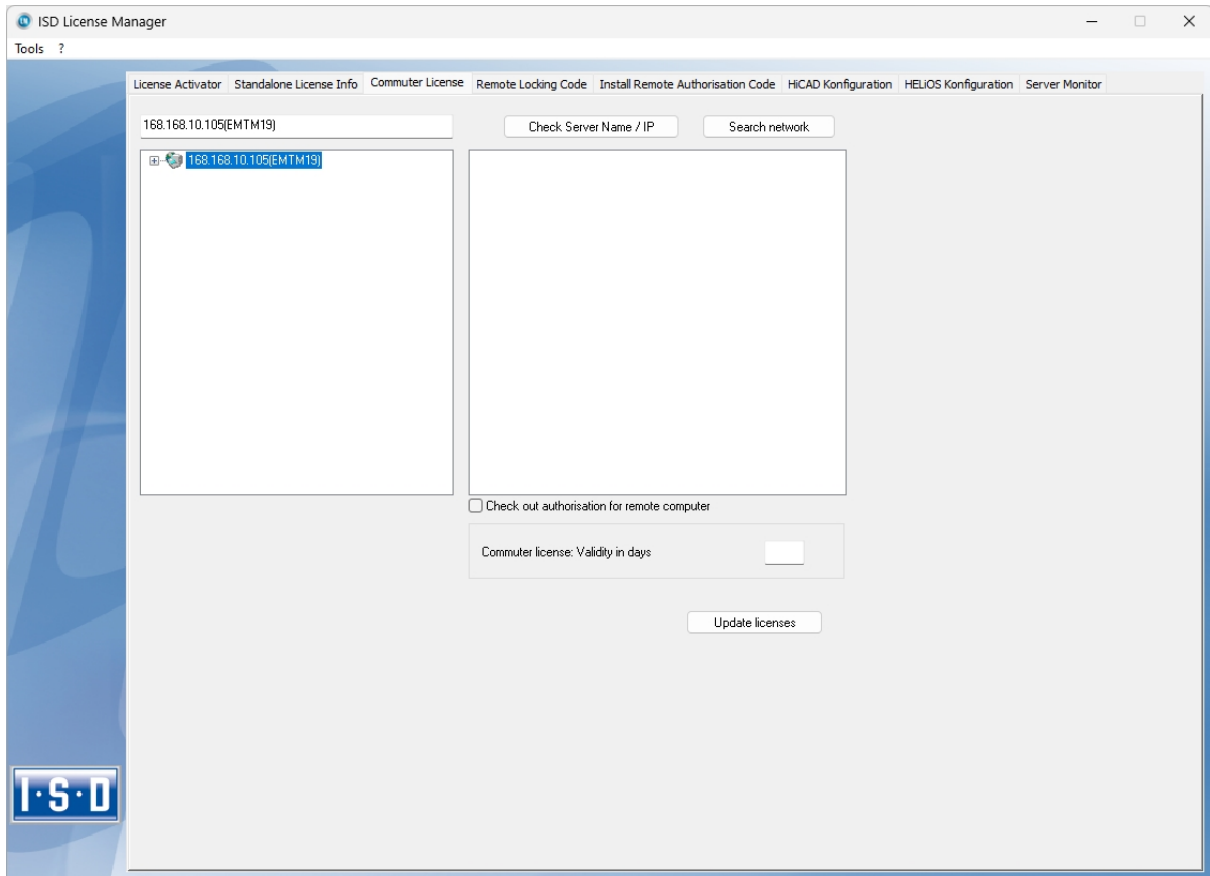


Please note:

Checking out a license for use on your laptop does not mean that you have access to drawings and HELiOS on your company's network!

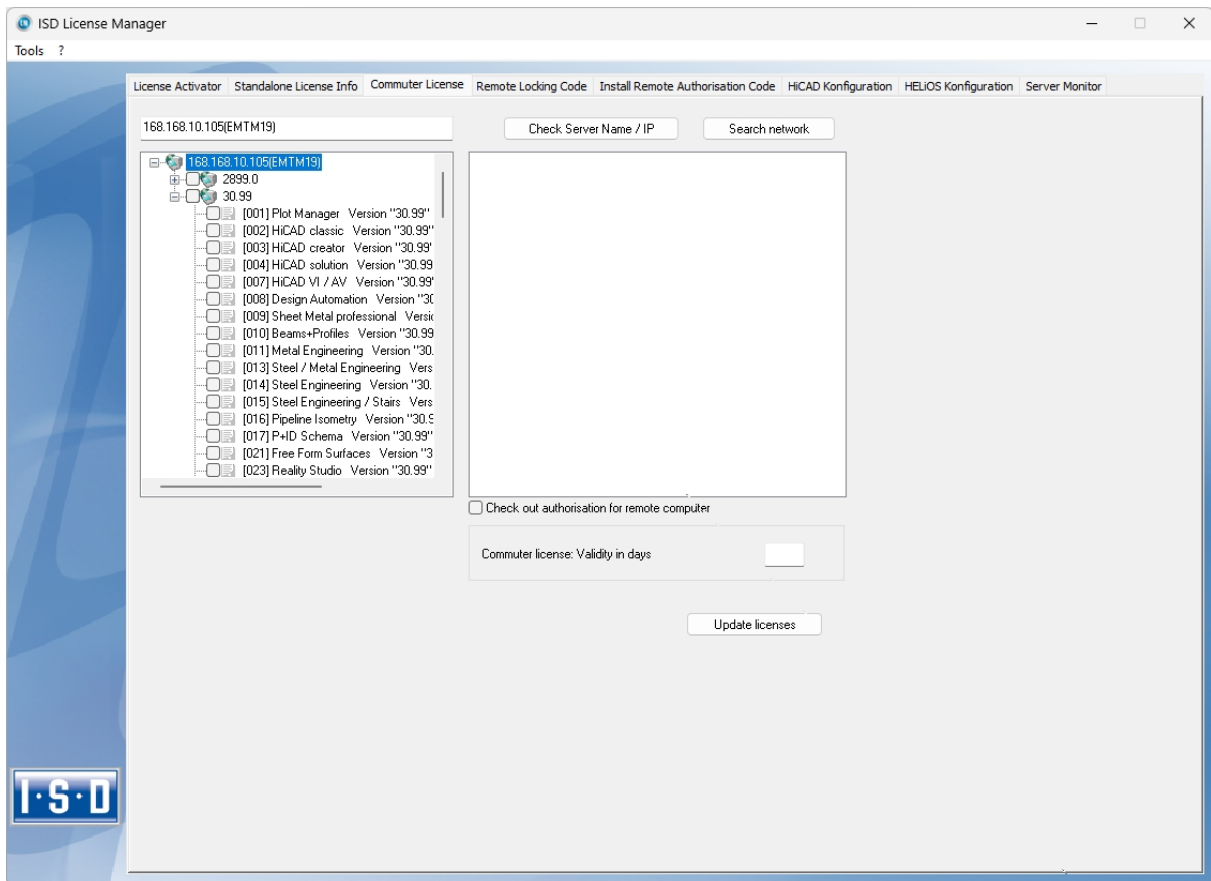
Checking Out Commuter Licenses, with Network Connection

Start the **ISD License Manager** (while a connection to the Server still exists). Switch to the **Commuter License** tab.

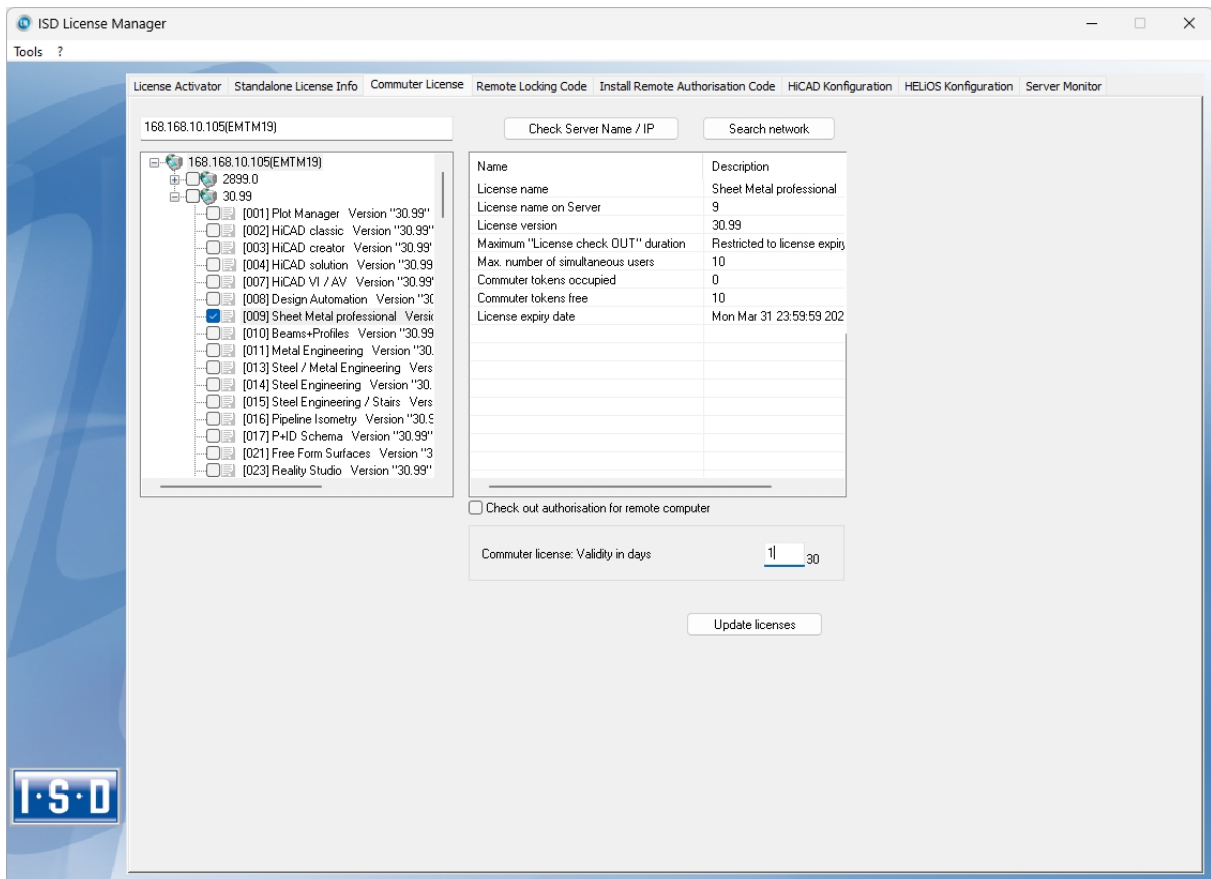


Use the **Search network** button to automatically search for License Servers. Expand the tree structure of the found Server by a click on the "+"-sign. All Versions will then be shown on the License Server. The result looks as follows:

Checking Out Commuter Licenses, with Network Connection



Select the required licenses by activating the corresponding checkboxes on the left hand side.

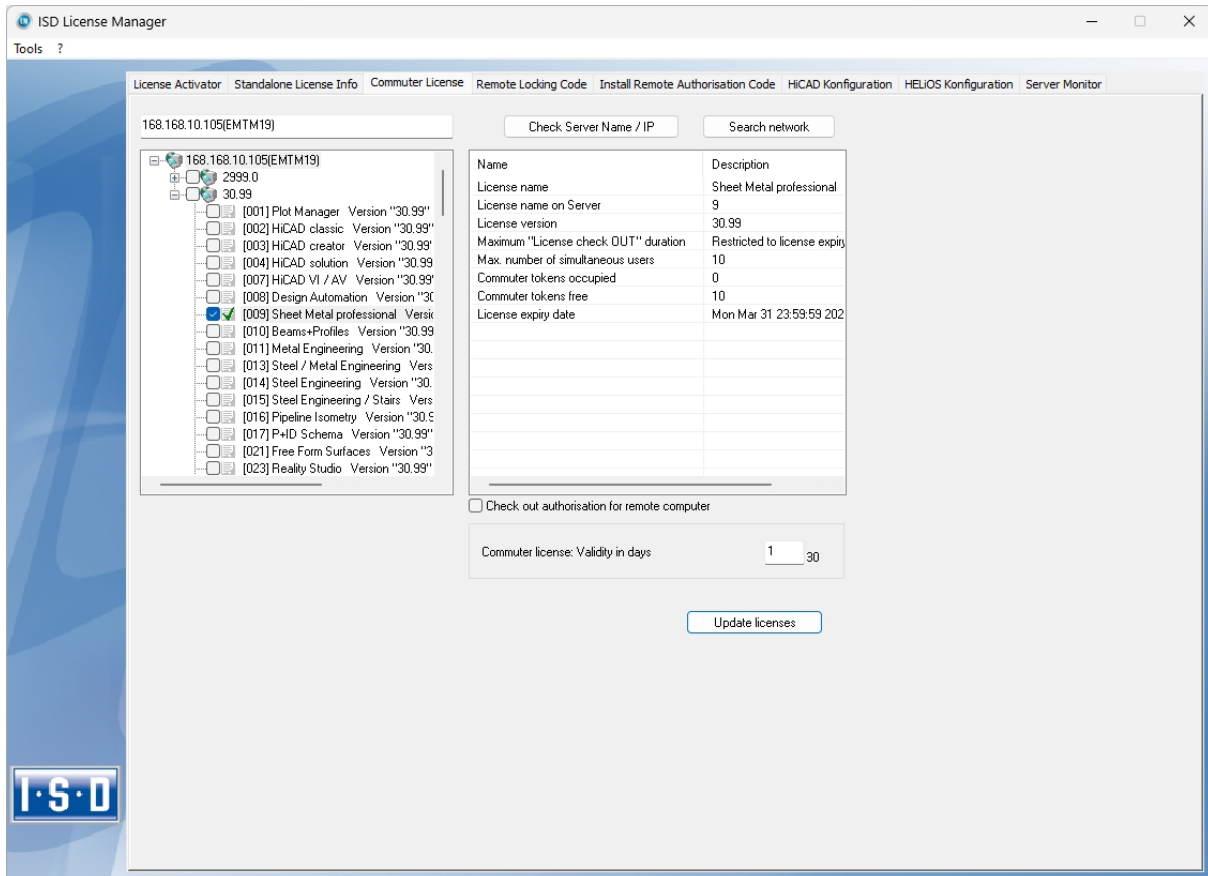


On the right hand side, information on the selected license is displayed.

In the **Commuter license: Validity in days** field, you enter the number of days that you want the commuter licenses to remain checked out from the Server. The maximum number of days is 30. By default (or if a "0" is entered), the value is set to 1.

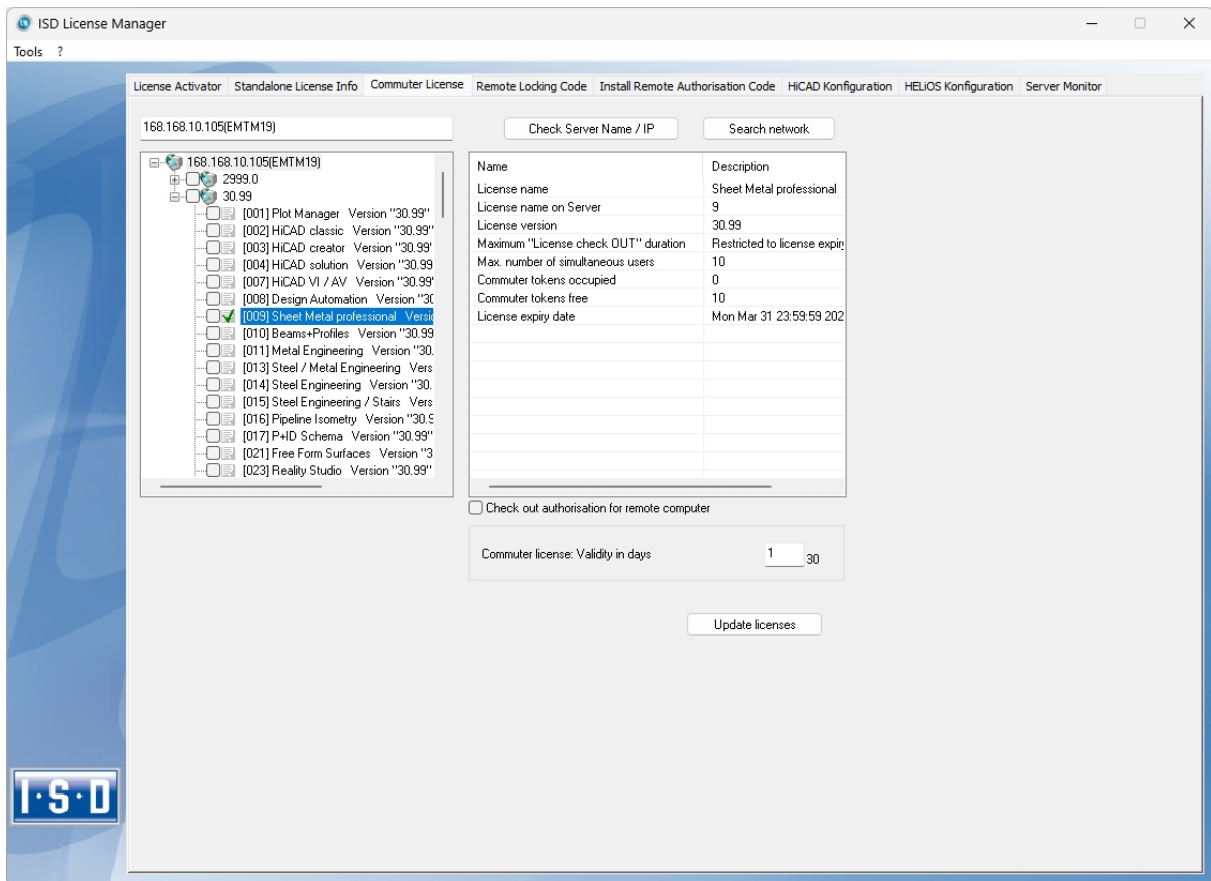
For reasons of safety you should check out the licenses only for the required period! If a commuter license is lost, e.g. because of theft or a defect of the client computer, the license on the Server cannot be used any more before expiry of this date.

After entering the expiry date for the commuter licenses, click the **Update licenses** button. The Commuter licenses are checked out from the Server.



All selected licenses are now checked out from the Server and you possess all rights on your computer for the specified validity period for the commuter licenses. This means that you are enabled to work network-independent. The checked out licenses are no longer available to the other computers on the network.

Checking Out Commuter Licenses, with Network Connection



You can however also return the commuter licenses before their expiry date. To do this, you need to connect to the Server, deactivate the checkboxes on the left and click the **Update licenses** button. All licenses are now made available on the Server and locked on your computer, i.e. you can now only use HiCAD/HELIOS if there is a connection to the License Server. The licenses made available again can now also be used from other workstations.

Checking Out Commuter Licenses, without Network Connection

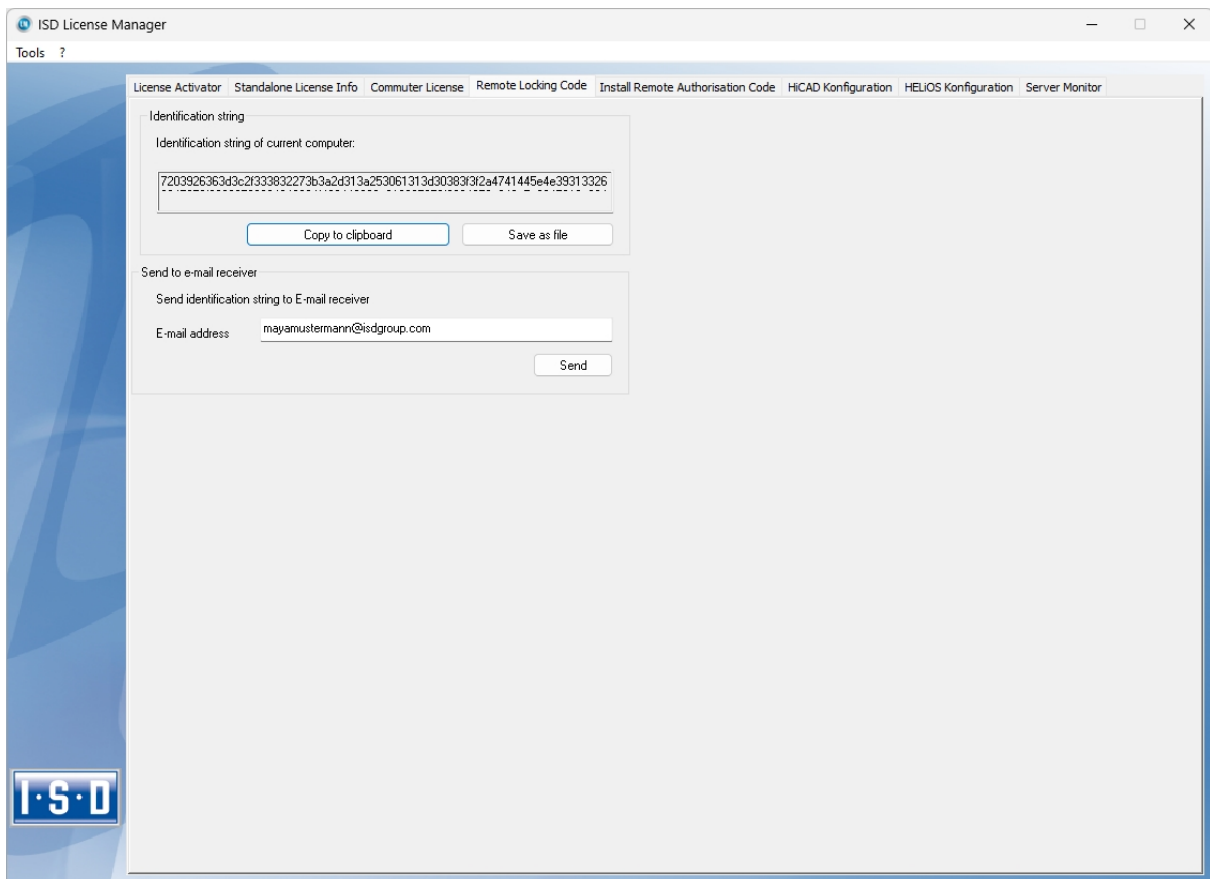
Commuter licenses can also be drawn from the License Server without an existing network connection. For this **Administrator rights** are required.

Commuter licenses checked out in this way cannot be returned to the License Server! This means that the commuter licenses that have been checked out from the Server are only (automatically) made available again after their expiry date.

Several steps are required for checking out without network connection - by the Administrator having a network connection to the License Server, as well as by the Client (that is, your laptop) having no network connection to the License Server.

As long as commuter licenses are checked out in this way, it is not possible to update the network licenses on the server. The same applies when buying new modules/licenses and changing the configuration.

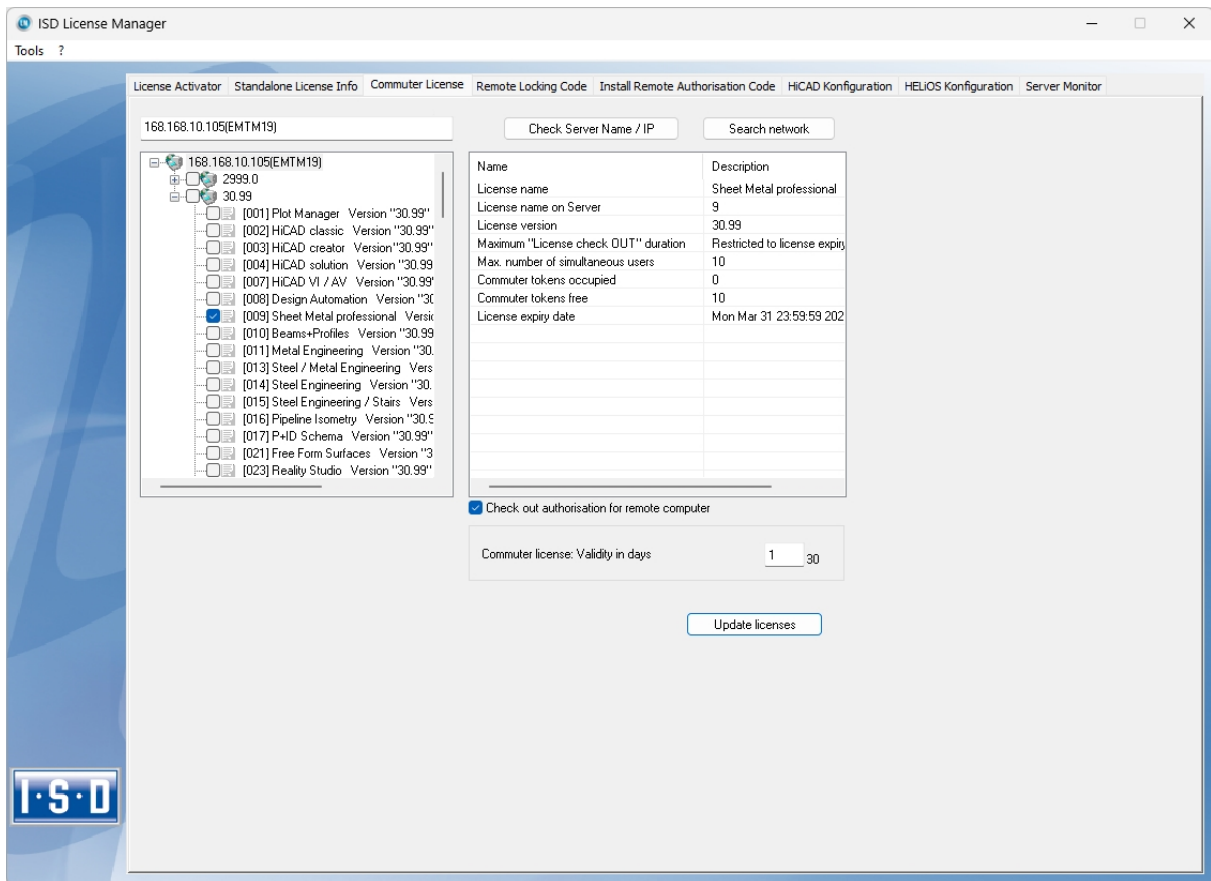
The Client starts the **ISD License Manager** tool, switches to the **Remote Locking Code** tab.



Then, the Client sends the generated character set to the Administrator (via E-mail or over the phone).

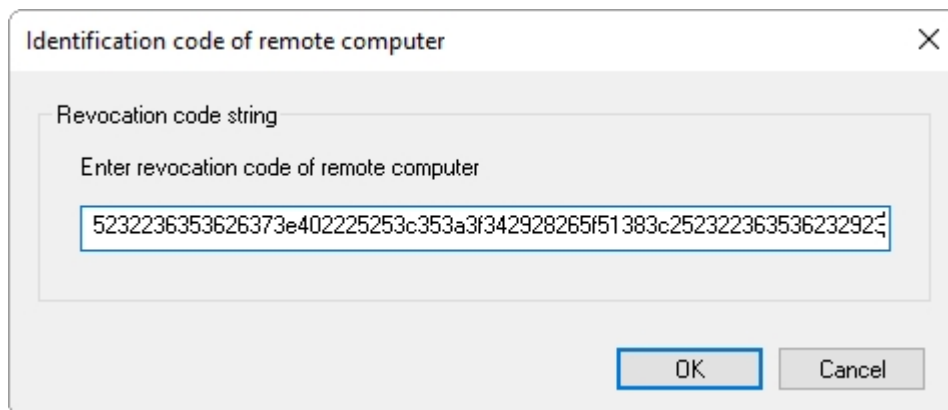
The Administrator starts the **ISD License Manager** and switches to the **Commuter License** tab.

Checking Out Commuter Licenses, without Network Connection

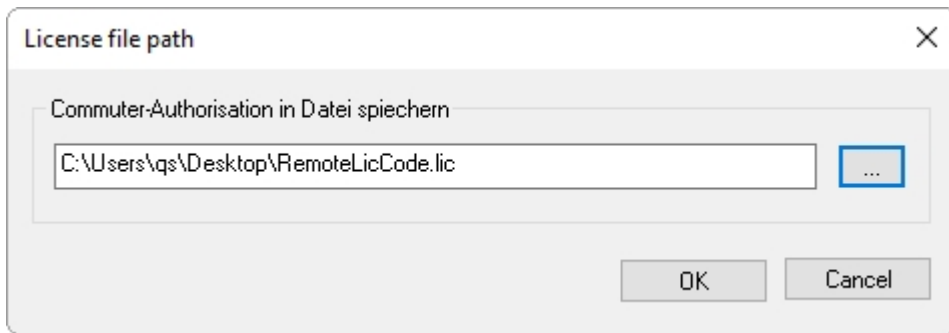


The License Server will be selected, and the required licenses (modules) are activated in the left window. In the **Commuter license: Validity in days** field, you enter the number of days that you want the commuter licenses to remain checked out from the Server. The maximum number of days is 30. By default (or if a "0" is entered), the value is set to 1. To checkout a remote commuter license the administrator now needs to activate the **Check out authorisation for remote computer** checkbox . Administrator rights are required for this.

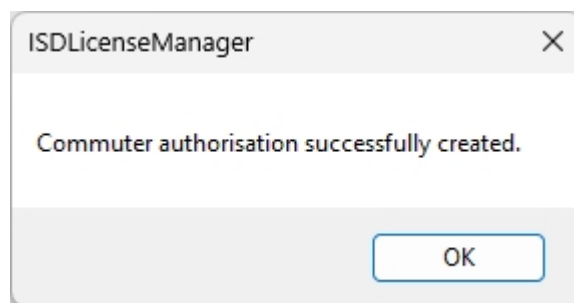
A click on the **Update licenses** button opens a new dialogue window, in which the administrator enters the character set received from the Client



After selecting **OK**, another dialogue opens.

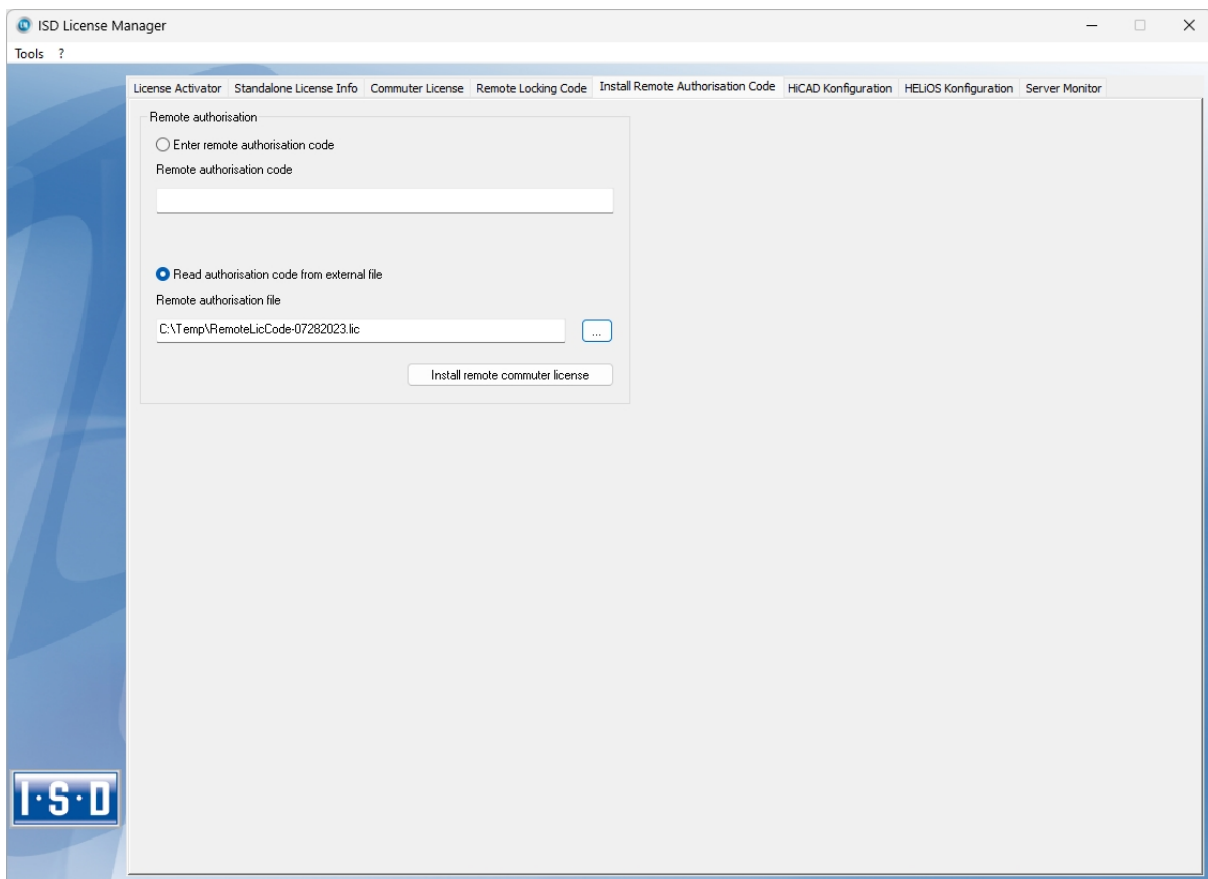


Here the Administrator enters the target path and the file name for the licenses to be swapped out. Make sure that a unique file name is used, for example, by including in the file name the host name of the remote computer and the expiry date.

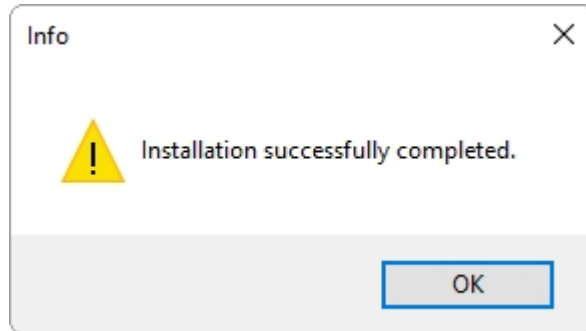


Click **OK** to check out the commuter licenses from the License Server and swap them out to a file, e.g. RemoteLicCode.lic.

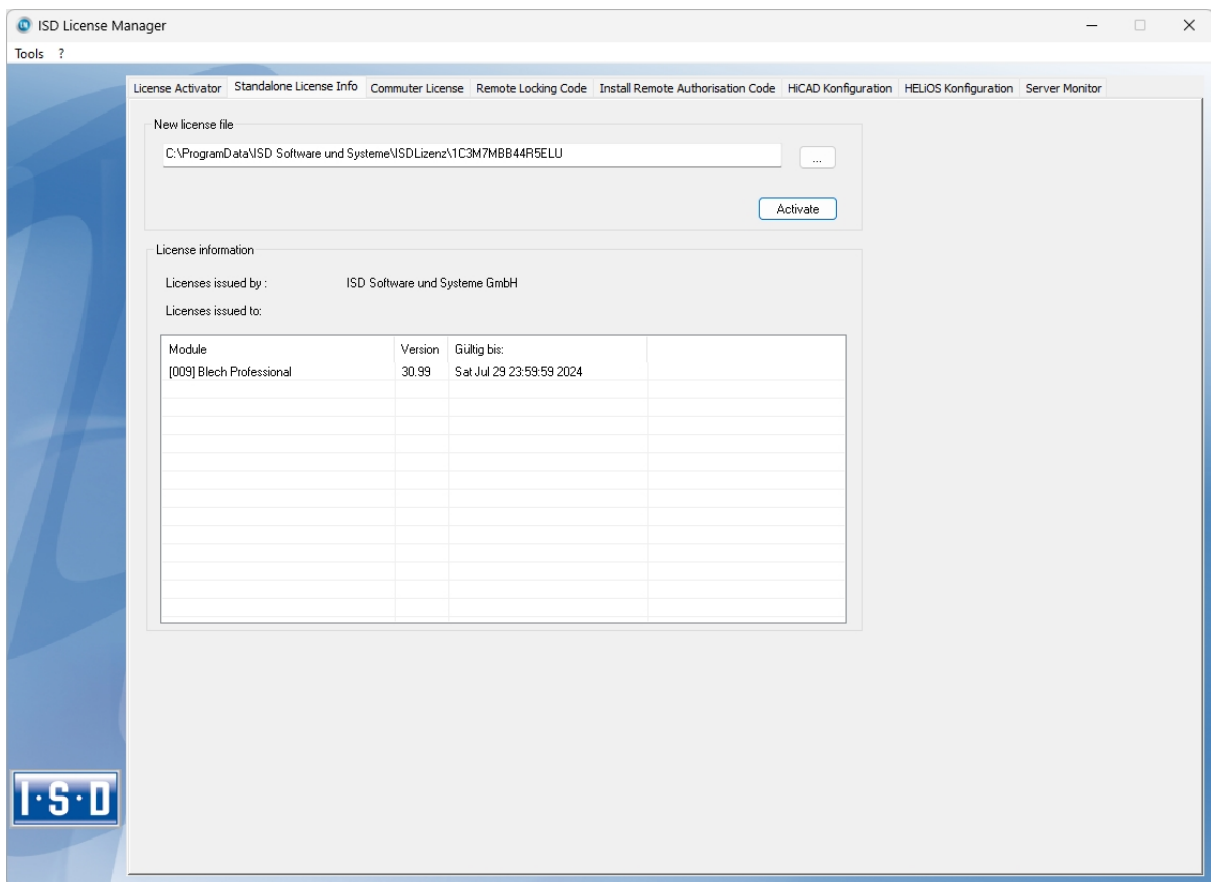
After receiving the file with the commuter licenses, the Client starts the **ISD License Manager** again and activates the **Install Remote Authorisation Code** tab.



Now the Client can install the received commuter licenses directly via file selection or via copying of the file contents. Click the **Install Remote Commuter License** button to install the Commuter Licenses on the Client.



After successful installation, the Client must switch to the **Standalone License Info** tab.



To update, the Client must click on the **Activate** button. The information which licenses are installed locally on the computer will then be provided to the Client.

Legal notes

© 2024 ISD ® Software und Systeme GmbH. All rights reserved.

This User Guide and the software described herein are provided in conjunction with a license and may only be used or copied in accordance with the terms of the license. The contents of this User Guide solely serve the purpose of information; it may be modified without prior notice and may not be regarded as binding for the ISD Software und Systeme GmbH. The ISD Software und Systeme GmbH does not assume any responsibility for the correctness or accuracy of the information provided in this document. No part of this document may be reproduced, saved to databases or transferred in any other form without prior written permission by the ISD Software und Systeme GmbH, unless expressly allowed by virtue of the license agreement.

All mentioned products are trademarks or registered trademarks of their respective manufacturers and producers.



Your local contact

We attach great importance to the direct contact with our customers and partners, because only a lively dialogue and constant exchange with practice ensure application-oriented software development.

Feel free to contact us! Whether at our headquarter in Dortmund or at one of our branches and subsidiaries in your vicinity - we will be happy to answer all your questions about our products and services. We are looking forward to hearing from you!

Headquarter Dortmund

ISD Software und Systeme GmbH

Hauert 4

D-44227 Dortmund

Phone +49 231 9793-0

info@isdgroup.com

ISD locations worldwide at www.isdgroup.com