



HELiOS

UNLIMITED PLM PERFORMANCE DEVELOPED BY ISD

HELiOS - What's new?

Version 2019

News Overview

Date of issue: 11/12/2019

isdgroup.com



THE WORLD OF CAD AND PDM SOLUTIONS

TOC

Notes on HELiOS Updates	7
Service Pack 2 (V 2402)	7
Important Notes on Updates for Administrators	7
1.) Make a data backup before updating	7
2.) If required, use the log file for the update	7
HELiOS Desktop	9
Service Pack 2 (V 2402)	9
About HELiOS Desktop window: Installed Hotfixes	9
Support request	10
Attribute mapping for file import via Drag & Drop and serial input	10
Automatic removing of old sessions	11
Service Pack 1 (V 2401)	12
Redesigned user interface	12
Where-used lists for documents	14
Copy number	14
Major Release 2019 (V 2400)	15
Support of SQL Server 2019	15
Integrated preview for standard image formats	15
Workspace	15
New dialogue windows	16
Revised SmartSearch dialogue window	17
New dialogue for unlocking of HELiOS objects	18
Workflow - Send E-mails with notes	19
Option for mandatory project/folder selection	21
Changeability of old indices by Administrator	23
HELiOS Spooler	24
Service Pack 2 (V 2402)	24
Model area of AutoCAD drawings	24
Configurable restart of CAD application	24
Service Pack 1 2019 (V 2401)	25
Combining of different PDFs into one document	25
Pausing the Spooler	25
Major Release 2019 (V 2400)	26
Inventor: Export of image formats and optional database connection	26
HELiOS MS Office Interface	27
Service Pack 2 (V 2402)	27
Model structure: Display of document structure	27
Documents in the Workspace	28
Service Pack 1 2019 (V 2400)	29

Office 2019 and support of multiple versions.....	29
HELiOS CAD/CAE Integrations.....	30
Service Pack 2 (V 2402).....	30
ZUKEN E3 interface.....	30
New Workspace.....	30
Improved attribute mapping.....	31
Service Pack 1 2019 (V 2401).....	32
Simultaneous support of different CAD versions.....	32
Taking the original application into account when loading and saving documents.....	32
HELiOS in HiCAD.....	33
Service Pack 2 2019 (V 2402).....	33
New icons for HiCAD file formats.....	33
Service Pack 1 2019 (V 2401).....	34
Article master sync when saving.....	34
Major Release 2019 (V 2400).....	35
Automatic transfer of product structure and article master attributes upon saving.....	35
New dialogue for unlocking of HELiOS objects.....	38
Excel BOM with bar optimisation.....	40
Pre-mounted assemblies in BOMs.....	40
Loading of the current article master of semi-finished products in attached parts.....	41
HELiOS for AutoCAD.....	42
Service Pack 2 (V 2402).....	42
New functions and options in the HELiOS-AutoCAD interface.....	42
Attribute mapping.....	43
Optimized HELiOS Workspace.....	44
Model structure: Display of product structure.....	46
Service Pack 1 2019 (V 2401).....	47
AutoCAD 2020 and AutoCAD Mechanical 2019/2020.....	47
Bills of Materials.....	47
HELiOS for AutoCAD Mechanical.....	48
Service Pack 2 (V 2402).....	48
New functions in the HELiOS-AutoCAD Mechanical interface.....	48
Attribute mapping.....	49
HELiOS for Autodesk Inventor.....	50
Service Pack 2 (V 2402).....	50
Performance optimization and utilized Levels of details.....	50
New in HELiOS: Drawings.....	50
Enhanced batch import.....	51
Attribute mapping: Enhancement for file property with case differentiations.....	52
Recogniton of semi-finished product master data by length.....	52

Service Pack 1 2019 (V 2401)	53
Inventor 2020.....	53
Further enhanced attribute mapping.....	53
Levels of detail.....	53
Workspace settings.....	54
Switch user.....	55
Creating indices when working in a document-oriented manner.....	55
Derive via model structure.....	55
Option for product structure sync control when saving.....	56
Creating semi-finished products as structure items.....	56
Handling of standard parts.....	57
Major Release 2019 (V 2400)	59
Performance.....	59
Attribute mapping.....	59
Identification options for substitution geometries.....	59
Support of adaptive geometries.....	60
Batch update and Batch reimport.....	61
Indication of locally changed files in Workspace.....	63
Exchange active part.....	64
Update properties (all).....	64
Select/deselect drawings and presentations.....	65
Expanded HELiOS Options.....	66
Linked drawings.....	67
Support of bolt and stud connections.....	67
HELiOS for SOLIDWORKS	68
Note: SOLIDWORKS interface only available as of HELiOS 2020 (Version 2500)	68
Navisworks Interface	69
Service Pack 2 (V 2402)	69
Model structure: Display of product structure.....	69
Service Pack 1 2019 (V 2401)	70
Support of von Navisworks 2020.....	70
HELiOS & EPLAN	71
Service Pack 1 2019 (V 2401)	71
Support of EPLAN 2.8.....	71
Internet Server	72
Major Release (V 2400)	72
New HELiOS Internet Server.....	72

Notes on HELiOS Updates

Service Pack 2 (V 2402)

Important Notes on Updates for Administrators

For updates to Service Pack 2 of HELiOS 2019 a central update of the supplied HELiOS database is required (from sub-schema 166 to 194).

Since conflict may occur during the update process in case of inconsistent data stocks, you should do the following:

1.) Make a data backup before updating

Make sure that a data backup was made before carrying out the update of your HELiOS database.

For the backup, either use the HELiOS Database Creator (further information can be found in the Installation Notes) or your SQL Server Application.

In case of any questions, or if you need any help with regard to your customized system architecture , contact the ISD Hotline.

2.) If required, use the log file for the update


If any conflicts occur during the update, these will be recorded in the log file **HeliosDbUpdate.txt** (in the system path **%appdata%\ISD Software und Systeme\HeliosDbUpdate**).

Have this file ready when contacting the ISD Hotline in case of an unsuccessful update, so that they can help you solve the problem and make a successful update.

HELiOS Desktop



Service Pack 2 (V 2402)

About HELiOS Desktop window: Installed Hotfixes

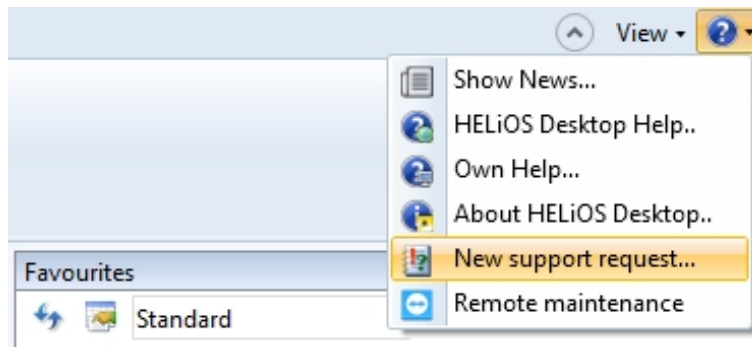
The **About HELiOS Desktop** window now also shows, besides the current Version and Build number, the numbers of installed Hotfixes. To open this window, choose  > **About HELiOS Desktop** at the top right of the HELiOS Desktop.



Support request

The new  > **New support request**  function takes you directly to the support portal of the ISD Group, where you can create a support ticket.

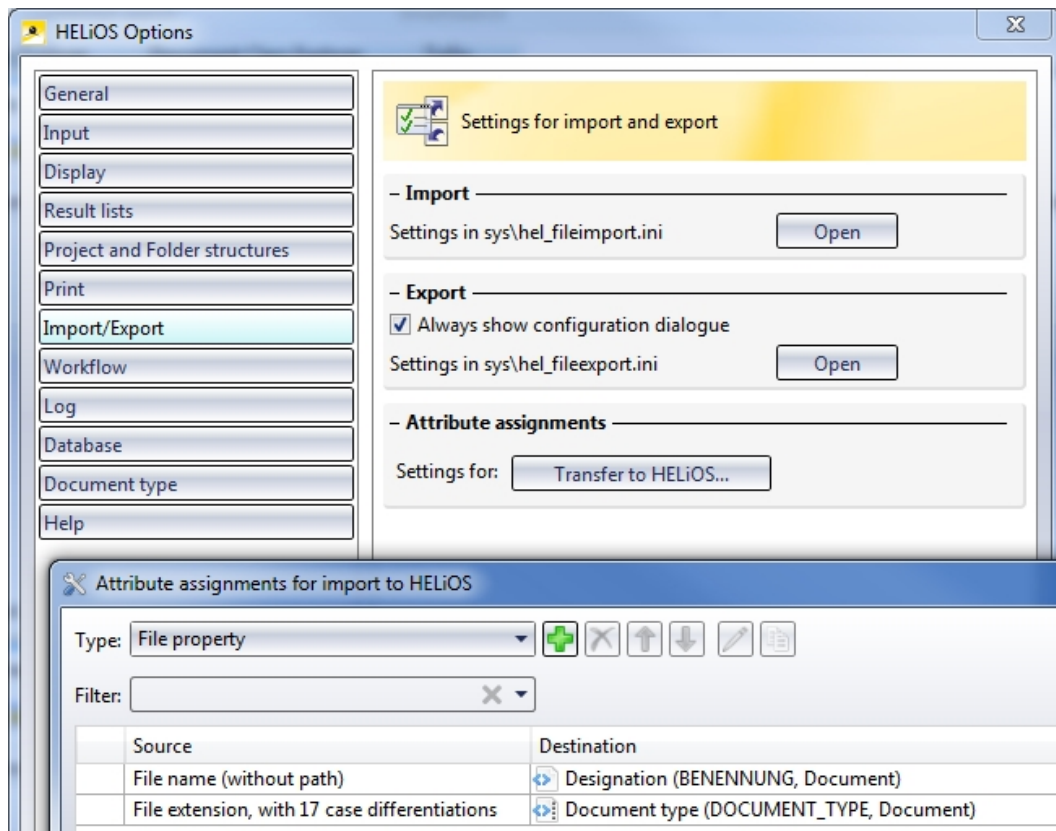
After calling the function, use your login data for my-ISD to access the support portal of the ISD. Fill in the form, attach files if required and click on **Create request**.



The new ISD support portal will be available for customers in Germany from 1 October 2019. For customers in other countries, the launch is scheduled for January 2020.

Attribute mapping for file import via Drag & Drop and serial input

On the **Import/Export** tab of the **HELiOS Options** dialogue window you can find, beneath **Attribute assignments**, setting options for the **Transfer to HELiOS**, which will apply for file import via Drag & Drop.



The procedure is largely similar to the attribute mapping known from the Multi-CAD interfaces and also allows the definition of different templates, which can be used, via menu selection, for the import.

Automatic removing of old sessions

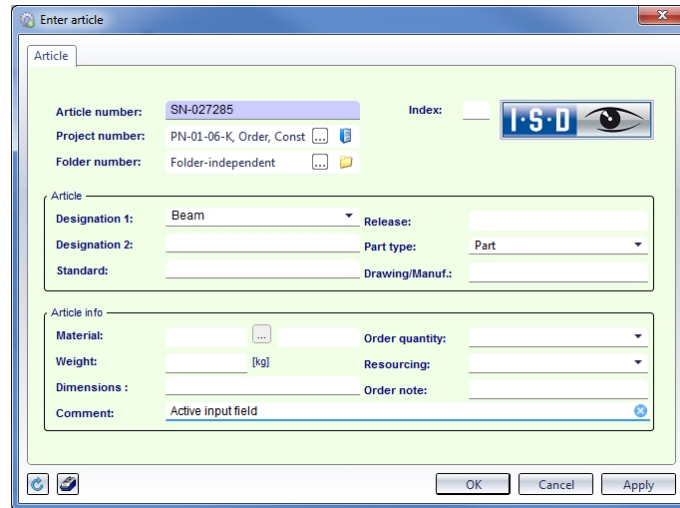
In case of a HELiOS Desktop crash or the crash of a linked application such as HiCAD, it is now ensured that “old” sessions are automatically removed, and thus unlocked, on the relevant computer system when HELiOS is restarted. This means that you do not have to manually unlock any sessions any more.


Helios Session					
Session ID	User	Computer name	Date	Application	Process ID
1232	Administrator	DEDTM133	19.09.2019 ...	HELiOS.exe	9024

Service Pack 1 (V 2401)

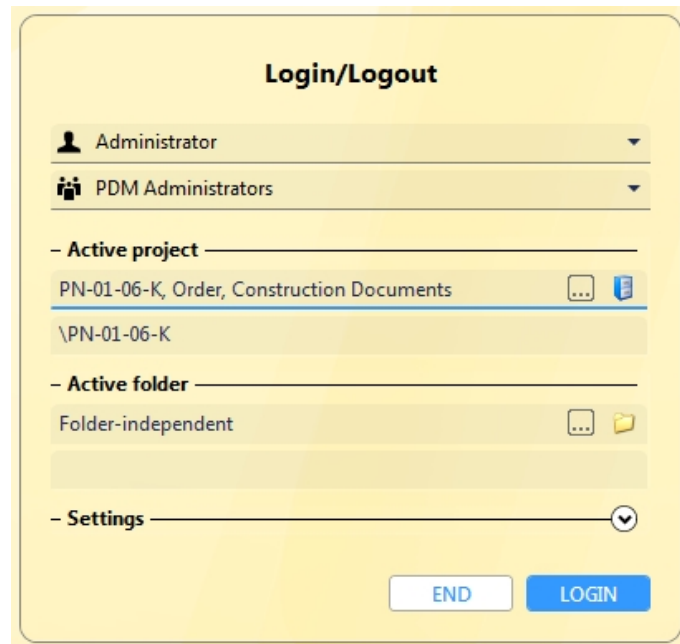
Redesigned user interface

HELiOS 2401 SP1 comes with redesigned and modernized windows and input masks for the HELiOS Desktop and interfaced applications (CAD programs, Office...). Fields with input options are underlined, currently active fields are underlined in blue.



Clicking on the  symbol at the end of an active input field clears the field (as an alternative to the Delete key).

The **Login** dialogue, too, has had a redesign.




The **Mask Editor** now offers the option to add an **Annotation** to an attribute field.


Masks that have been adjusted with the Mask Editor will then appear with the new layout in the HELIOS Desktop.

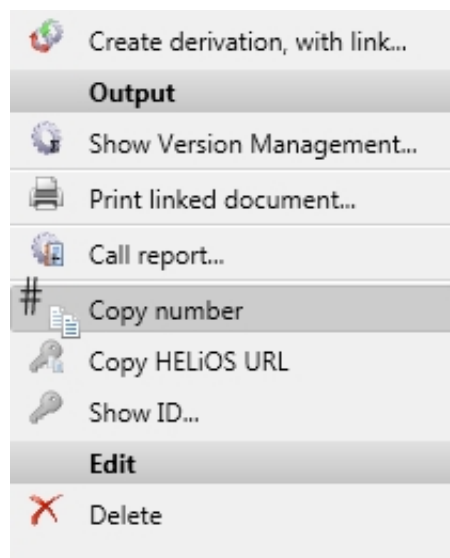
Where-used lists for documents

Like the Article detail masks, the Document detail masks now have a **Use** tab that contains a documents where-used list based on the HELIOS result list technology.

Choose  > **Use** to activate this tab.

Copy number

The new context menu function  **Copy number** enables you to copy the designation of a HELIOS object (Document number, Article number, Folder name, Project, Material designation) to the Clipboard, e.g. to paste it from there to other applications with only a few mouse clicks.



Major Release 2019 (V 2400)

Support of SQL Server 2019

HELiOS 2019 supports the new SQL Server 2019.


Integrated preview for standard image formats

Image formats such as JPEG, TIF, BMP, PNG, etc. which have been saved as documents to HELiOS can now be displayed by the new, integrated graphic viewer of HELiOS.

You can zoom into graphics and move the selected detail at any time. This allows an easy representation of neutral formats and reduces the number of external viewers that may be required.

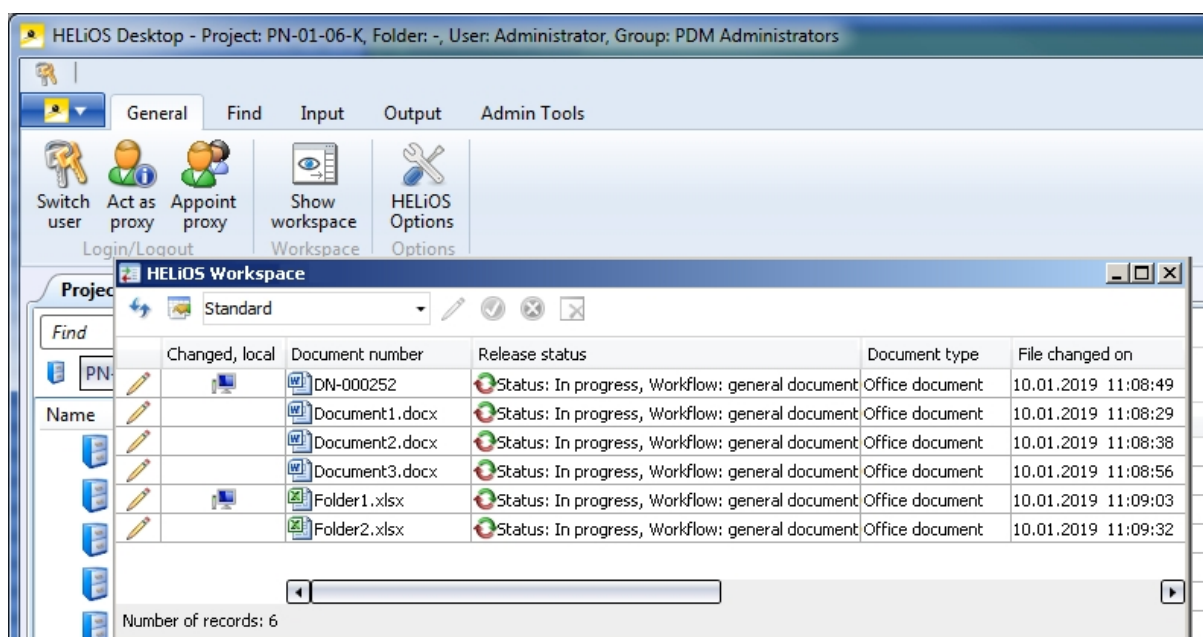
Workspace


As of HELiOS 2019 the **Workspace** that you already know from the Multi CAD and Office interfaces will be available to you in the HELiOS Desktop, too.

Click on the  **Show workspace** icon on the **General** Ribbon tab to open the **HELiOS Workspace** dialogue window.

Here, all documents of the session will be listed. Documents that are opened and/or edited via the HELiOS Desktop will be stored in the workspace directory.

This will constantly provide you with a clear overview of the corresponding HELiOS objects, so that you can check them into the database when required. When closing the HELiOS Desktop a question regarding the handling of objects that are still in the Workspace will be displayed.

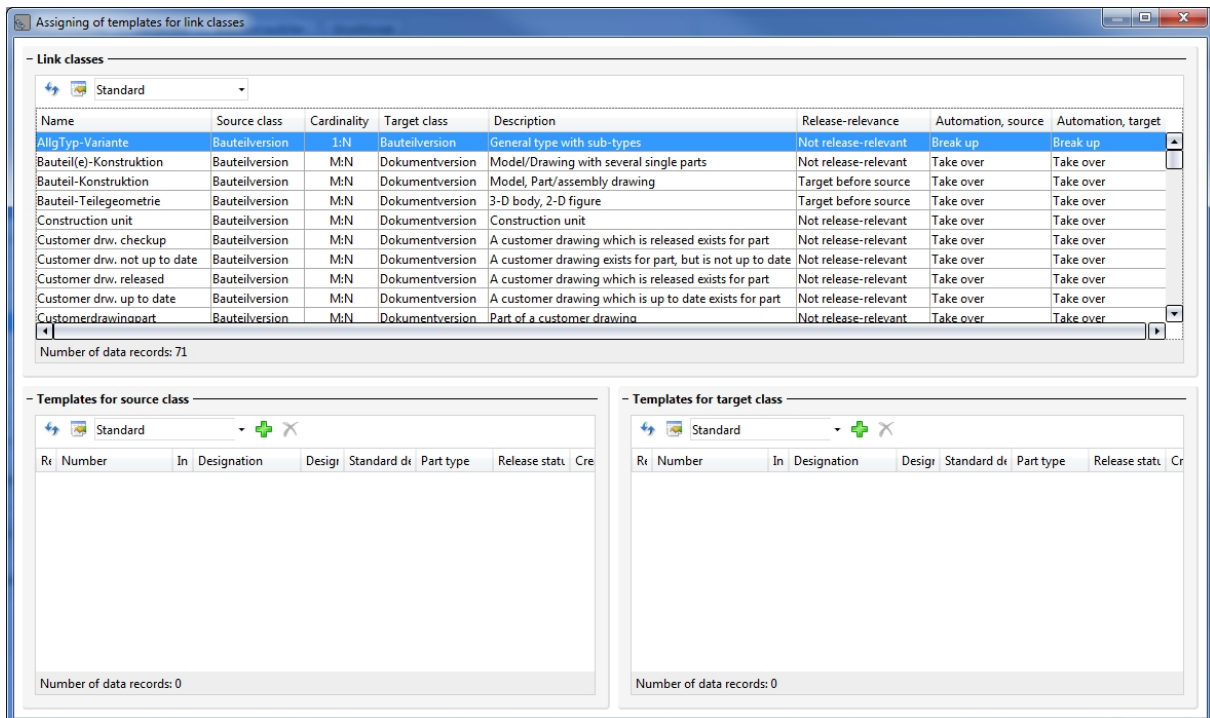


In the new **Changed, local** column the  symbol indicates that a document has been changed locally and saved since its last synchronization with HELiOS.

New dialogue windows

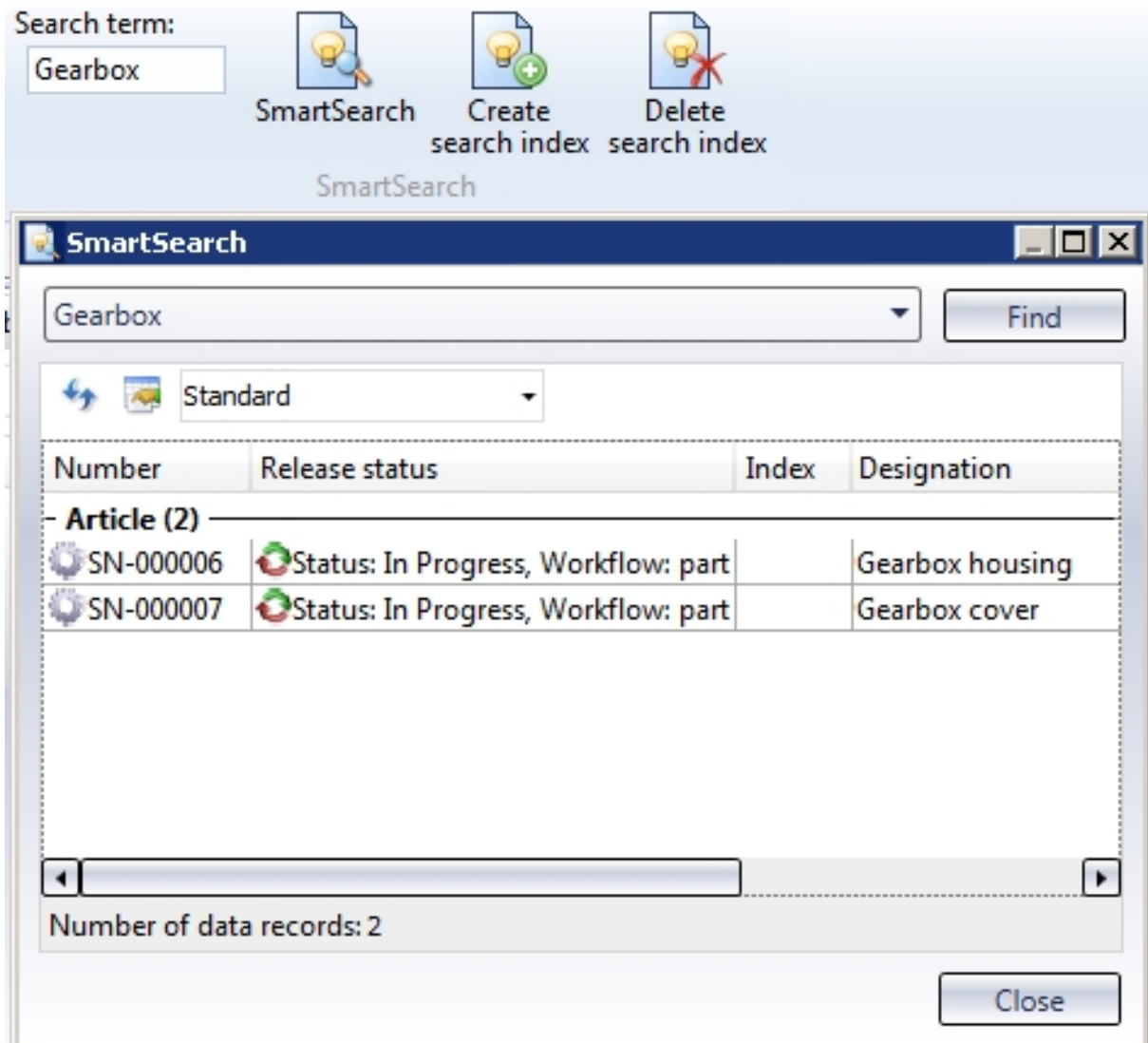
HELiOS 2019 comes with many modernized dialogue windows.

This concerns in particular the **Workflow**-related dialogues and sub-functions (e.g. the **Check list**, the **History** and the **Sub-workflow**) and the range of functions for **Links**, e.g. the assigning of templates for link classes.



Revised SmartSearch dialogue window

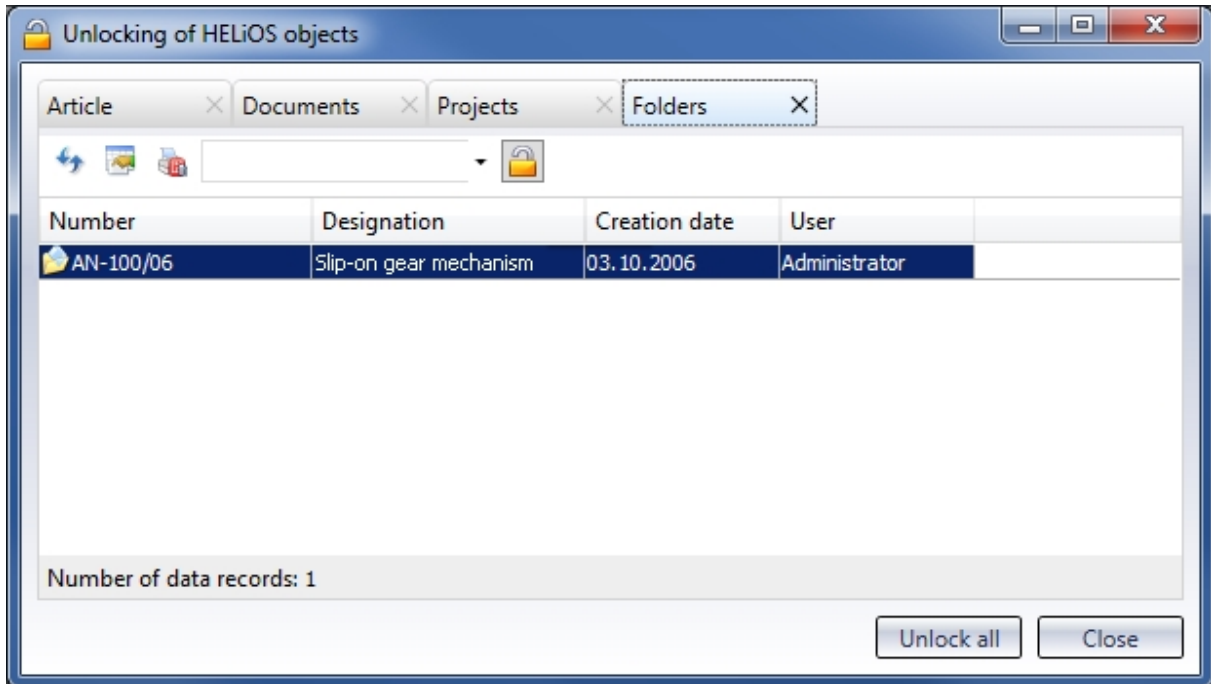
The dialogue window of the HELiOS SmartSearch has had a redesign and was adjusted to current standards.



New dialogue for unlocking of HELiOS objects

For unlocking of objects that are currently edited by other instances, the "ReleasedNext" tool was used in previous versions. This tool has now been replaced with a revised, integrated dialogue window that opens after starting HELiOS (or HiCAD) if such objects have been found.

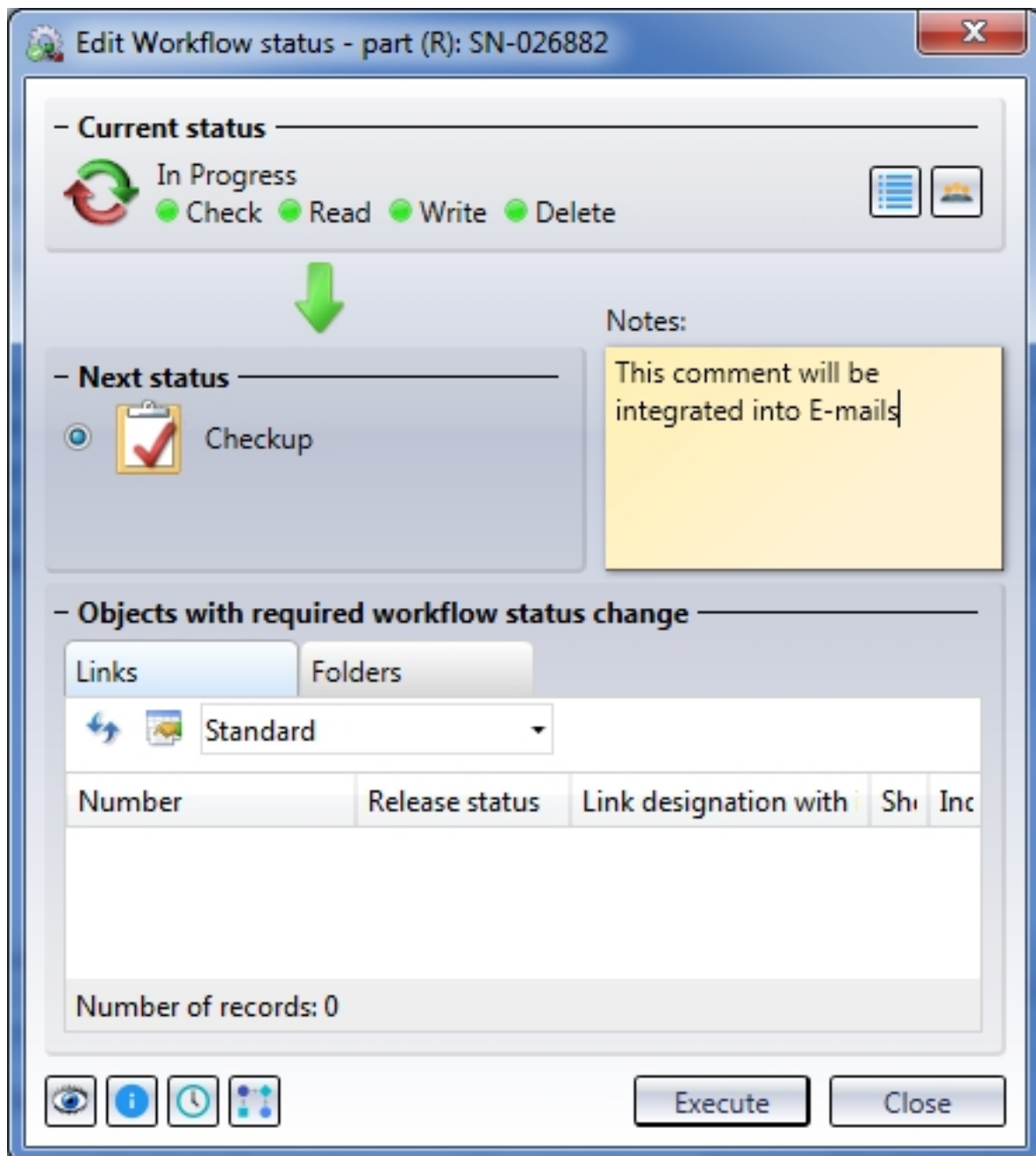
The dialogue window can also be called by choosing **Admin Tools > ReleaseNext** (Administrator rights required).



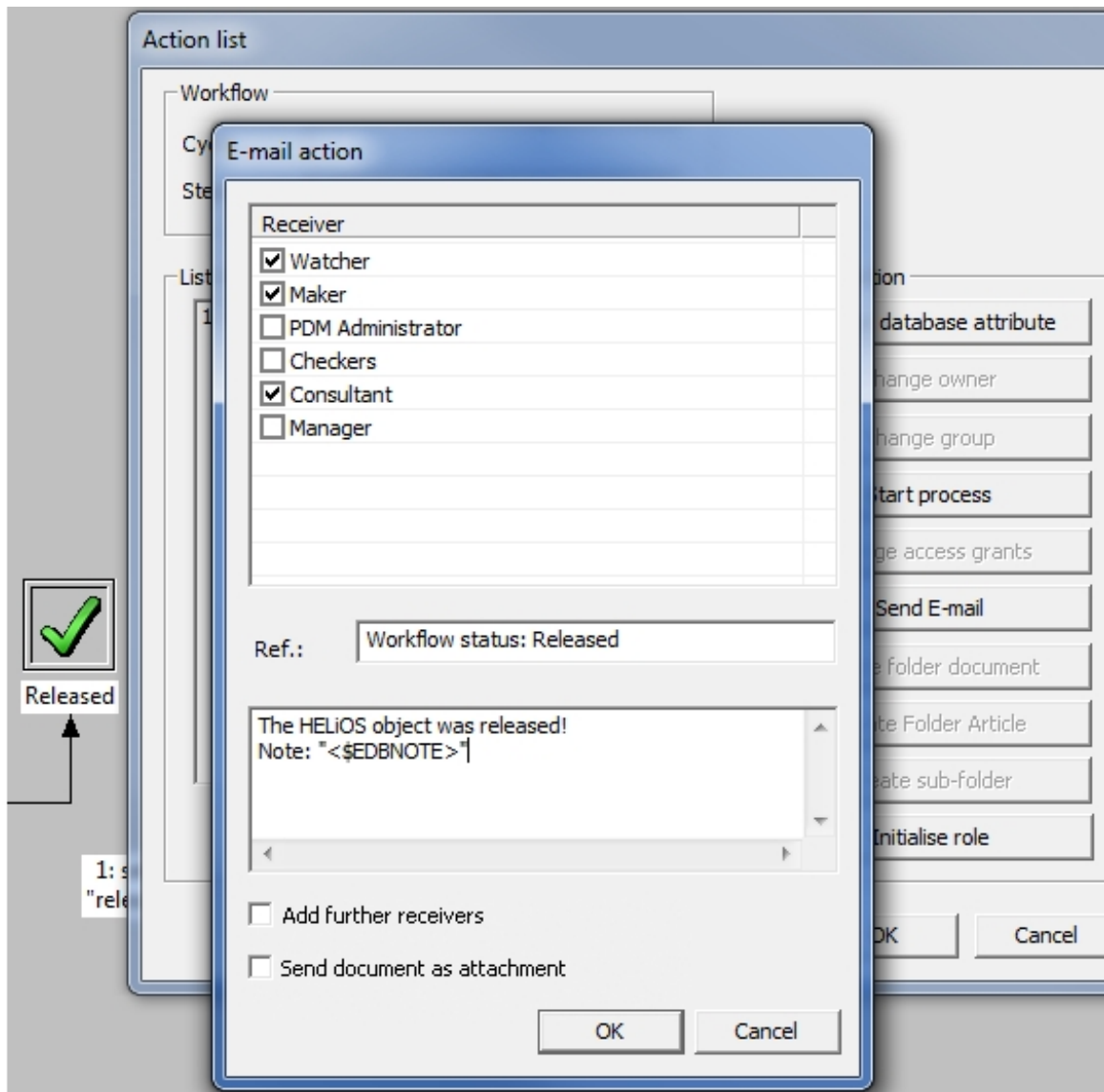
Workflow - Send E-mails with notes

In the action list for Role Workflow steps you can now determine that in the case of certain Workflow steps (e.g. Request checkup or Release), E-mails are automatically sent to relevant users.

The note commenting on a Workflow status can be sent together with the E-mail in the process.



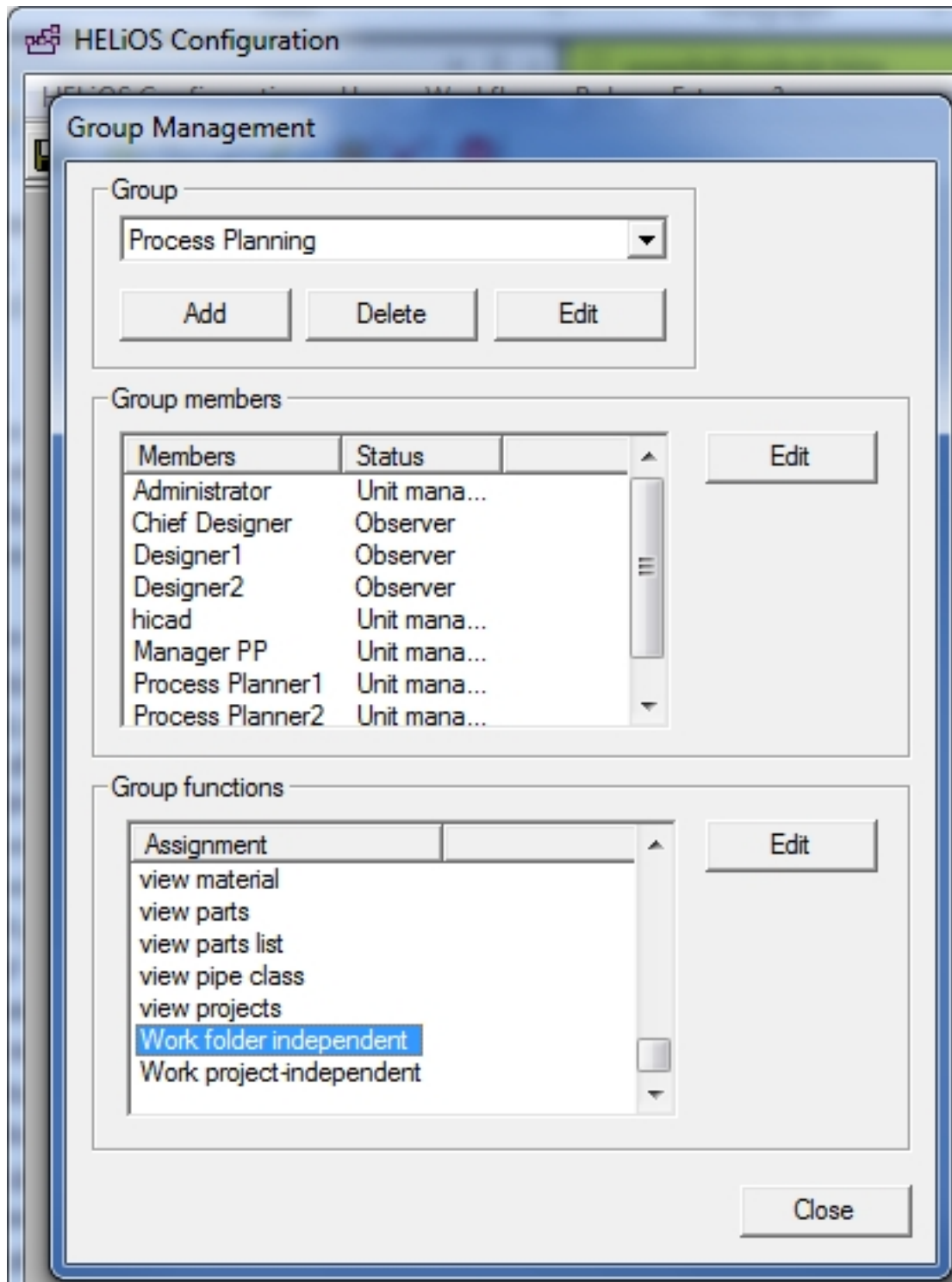
In the EDBSETUP action list of the corresponding Workflow step, enter the placeholder <\$EDBNOTE> for the into the comment field of the **E-mail action** dialogue window that will open when you click on the Send E-mail button. The note will then appear in the E-mail.



Option for mandatory project/folder selection

In some cases it makes sense to restrict access to particular projects and/or folders of the HELiOS database for particular users or user groups - e.g. external suppliers that have been integrated into the system.

This can be achieved by deactivating the new permissions function **Work folder-independent** or **Work project-independent** in the Management of the EDBSETUP for particular users.



Users who do not have that permission will not have the possibility of project-independent or folder-independent views, searches or inputs any more , since the corresponding buttons or selection options do no longer exist in the HELiOS user interface.

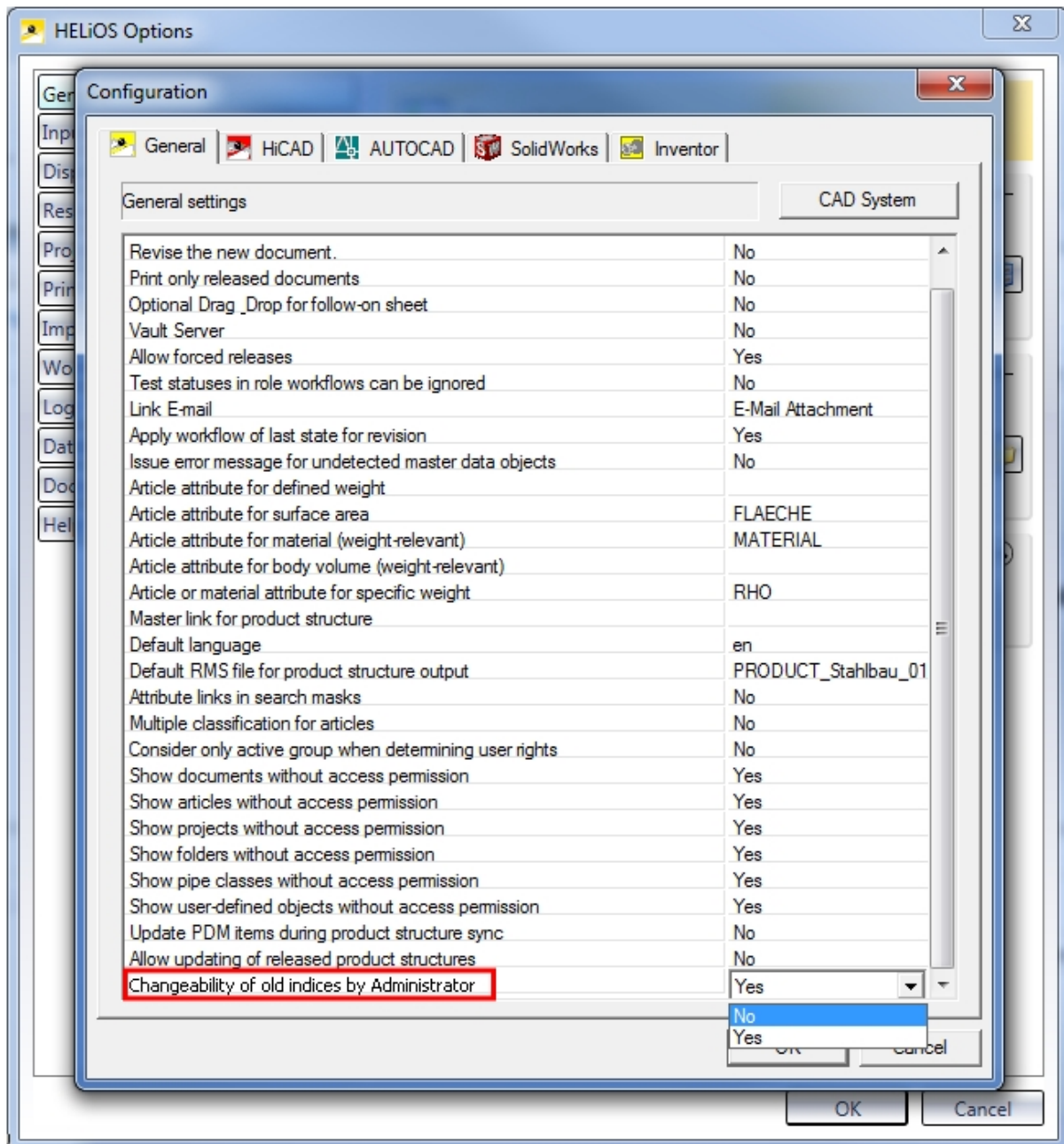


Please note:

Already existing users and user groups will automatically receive the new permission after an update of the existing database.

Changeability of old indices by Administrator

The new database option (**HELIOS Options > Database > General > Changeability of old indices by Administrator**) enables Administrators to edit old indices. This concerns both meta data and the relevant files, and will also take effect when saving documents in interfaced CAD systems and importing files in the HELIOS Desktop.



HELiOS Spooler

Service Pack 2 (V 2402)

Model area of AutoCAD drawings

When printing AutoCAD drawings (older versions) the model area of the drawing can be printed automatically if the layout area is empty.

You can configure this behaviour via the configuration file **AddIn.AutoCad.Config.xml** (this file will be automatically updated to the new configuration format by the Spooler).

Please also read the information given in the **Notes on File Conversion via the Spooler** topic.

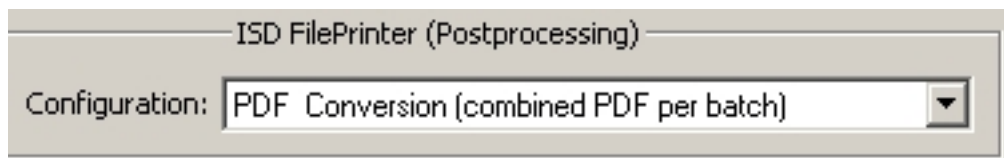
Configurable restart of CAD application

In previous versions, the appropriate CAD applications were restarted for each print or conversion job. This behaviour can now be configured, resulting in shorter processing times and a faster printing of the desired printout or file.

Service Pack 1 2019 (V 2401)

Combining of different PDFs into one document

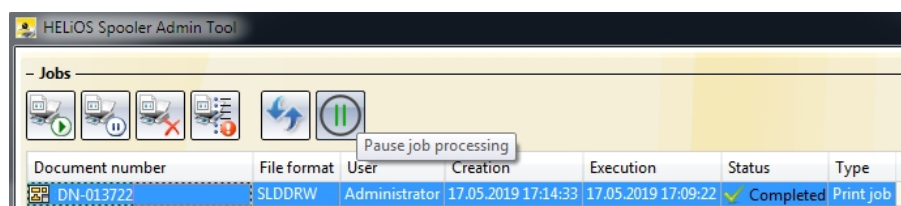
The HELIOS Print Client now contains a new option for the **Postprocessing** of print jobs, which allows you to combine individual PDF pages into one document during automated print job processing.



Pausing the Spooler

You can now pause and continue the Spooler, either interactively via the Admin Tool or via command prompt. New jobs will also be accepted while the Spooler is pausing (however they will not be processed during that period - their processing starts as soon as the Spooler is continued again).

The control via command prompt can be used for a time-controlled pausing and continuation of the Spooler, e.g. via Windows task planning.



Major Release 2019 (V 2400)

Inventor: Export of image formats and optional database connection

Image formats such as JPEG or BMP can now also be (automatically) output from Autodesk Inventor via the HELiOS Spooler by means of suitable conversion jobs.

To be able to use the new attribute mapping for the filling in of title blocks in Inventor during the output via Spooler, you have also the option to configure a database connection for the HELiOS Spooler.

HELiOS MS Office Interface

Service Pack 2 (V 2402)

Model structure: Display of document structure

If only a document structure instead of a model structure is available for a document, the HELiOS-MS Office /Excel) interface displays the document structure, according to the document master data, on the **Model structure** tab.

The screenshot displays two Excel spreadsheets side-by-side. The left spreadsheet, titled 'Current document: DN-013857', has a table with columns A, B, C, D, E, F, G and rows 1-6. Row 1 contains 'Reference:' in column A and '42' in column B. The right spreadsheet, titled 'Current document: DN-013858', has a table with columns A, B, C and rows 1-3. Row 1 contains 'x:' in column A and '21' in column B. Row 2 contains 'y:' in column A and '21' in column B. Row 3 contains 'Sum:' in column A and '42' in column B.

Overlaid on the spreadsheets is a dialog box titled 'DN-013857 (Document)'. The dialog has tabs for 'General', 'Assignments', 'Input', and 'Output'. The 'General' tab is active, showing various icons for 'Edit master data', 'Edit Workflow status', 'Preselect', 'Roles', 'Attribute values', 'Notes document', 'Mark-up', 'Export file', 'Import file', and 'Edit'. Below the icons is a 'Model structure' tab, which is currently selected. This tab displays a table with columns 'Document', 'O', 'O', 'In', 'In', 'W', and 'Designation'. The table contains two rows of data:

Document	O	O	In	In	W	Designation
DN-013857						Folder1
DN-013858						Folder2

At the bottom of the dialog box, it states 'Number of records: 2'. The background spreadsheets show a standard Excel interface with sheet tabs at the bottom labeled 'Sheet1', 'Sheet2', and 'Sheet3'.

Documents in the Workspace

The HELiOS Workspace window is now available in both the HELiOS Desktop and in the CAD or MS Office interfaces.

Irrespective of all filter options you can apply, the following rules apply for the display behaviour:

All documents that have been opened/loaded in the active application will be displayed, as well as all non-loaded documents that have been saved to the application with which the documents were originally created.

This means: As soon as a document is opened in an interfaced application, the corresponding Workspace will memorize this until the document will be removed from the Workspace again. The corresponding document will therefore be constantly displayed in the Workspace, also after closing and restarting the application.

When opening a particular document in two different applications (e.g. a DWG file in AutoCAD and Inventor), the HELiOS Workspace memorizes both applications and displays the file in the Workspaces of both applications.

Also, the following rule applies: For an Inventor assembly that references an Excel document, both the Inventor documents and the Excel file will be displayed in the Workspace after opening the assembly in Inventor. If the Excel file has previously been saved in the Office application (setting the document attribute "Related application" (HEL_APPLICATION) accordingly), this file will be additionally visible in the Workspace of Excel, even if it has not been explicitly loaded in this application by the user.

An exception to this rule is the Workspace of the HELiOS Desktop that always displays all documents.

Service Pack 1 2019 (V 2400)

Office 2019 and support of multiple versions

HELiOS 2019 SP1 supports offers an interface to MS Office 2019.

HELiOS CAD/CAE Integrations

Service Pack 2 (V 2402)

ZUKEN E3 interface

HELiOS 2019 Service Pack 2 can be interfaced with the ERP system ZUKEN E3.

New Workspace

The new HELiOS Workspace window with improved performance is now available in the HELiOS Desktop, the CAD and MS Office interfaces.

	Loaded	Chang	Open	Document number	Designation	Article number	Designation	Workflow status
	<input checked="" type="checkbox"/>			DN-000253		SN-025783	Framework	
	<input checked="" type="checkbox"/>			DN-000254	Production drawing	SN-025784	Test article r. pts.	
	<input checked="" type="checkbox"/>			DN-000255	Production drawing	SN-025785		
	<input checked="" type="checkbox"/>			acadiso.dwt	Production drawing	SN-026061		

Irrespective of all filter options you can apply, the following rules apply for the display behaviour:

All documents that have been opened/loaded in the active application will be displayed, as well as all non-loaded documents that have been saved to the application with which the documents were originally created.

This means: As soon as a document is opened in an interfaced application, the corresponding Workspace will memorize this until the document will be removed from the Workspace again. The corresponding document will therefore be constantly displayed in the Workspace, also after closing and restarting the application.

When opening a particular document in two different applications (e.g. a DWG file in AutoCAD and Inventor), the HELiOS Workspace memorizes both applications and displays the file in the Workspaces of both applications.




Also, the following rule applies: For an Inventor assembly that references an Excel document, both the Inventor documents and the Excel file will be displayed in the Workspace after opening the assembly in Inventor. If the Excel file has previously been saved in the Office application (setting the document attribute "Related application" (HEL_APPLICATION) accordingly), this file will be additionally visible in the Workspace of Excel, even if it has not been explicitly loaded in this application by the user.


An exception to this rule is the Workspace of the HELiOS Desktop that always displays all documents.







Improved attribute mapping


The user interface of the attribute mapping for data synchronization between CAD and HELiOS has been further improved.









There is now a filter option for a faster retrieval of result list entries, and for multi-language attributes you can now just select the desired language.

Recently edited attribute assignments are marked in the overview with a  symbol, added new attribute assignments with a  symbol and deleted attribute assignments with a  symbol.


 **Attribute assignments for import to HELiOS**




Type:      

Filter: 

	Source	Target
	Date of modification	 Date of modification (HEL_GEAENDERT_DATUM, Article)
	Designation	 Designation (BENENNUNG, Article)
	Material	 Material (WERKSTOFF, Article)
	Weight	 Weight (GEWICHT, Article)
	Volume	 Volume (VOLUMEN, Article)

Changes will only take effect after clicking on **Apply** in the Attributes assignments window or closing it with **OK**.

If errors occur during attribute synchronization, e.g. because an attribute has been deleted or renamed by mistake and can therefore not be found, this will be indicated in the corresponding field of the result list by a  symbol.

Target
 Length (LAENGE, Item)
  Comment (BEMERKUNG, Item)

Furthermore, application-specific characteristics, such as the area selection in AutoCAD, will be considered by the attribute mapping.



Please note:

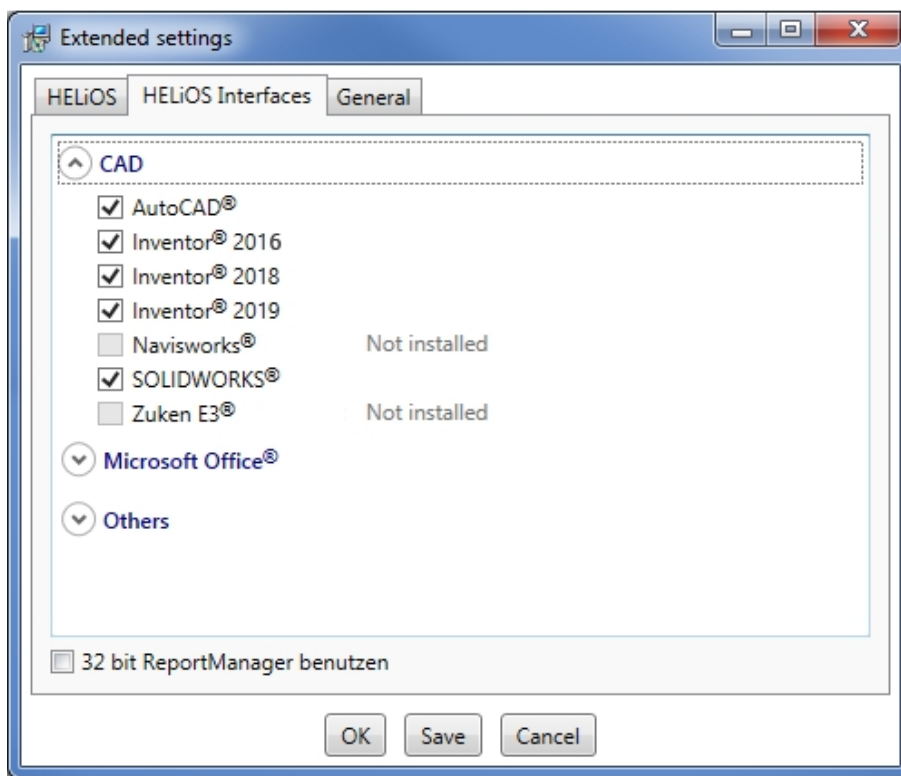
For system paths and file names / file extensions the attribute mapping does not distinguish between upper case and lower case letters.

Service Pack 1 2019 (V 2401)

Simultaneous support of different CAD versions

If you work with different versions of a CAD software on the same local system, you have now the option to install the multi- CAD interface to HELiOS for all versions simultaneously. For this purpose, the installation menu shows you all versions of CAD applications in a dialogue window for selection that exist in the system.

In other words: If several versions of an application exists on a system, you can choose which of them you want to interface with HELiOS.



Taking the original application into account when loading and saving documents

From HELiOS 2019 Service Pack 1 onwards, the original application with which a document was created will be transferred as a document attribute when the document is saved.

This ensures that the document will be opened (e.g. for their editing via HELiOS result lists) with the same application with which they were created / saved.

This is also an advantage when working with file formats that could have been created by several applications installed on the system, such as DWG and DXF files associated with AutoCAD and Inventor.

If the corresponding hint is missing, e.g. because the file has been transferred to an older HELiOS version, the application that is registered in your Windows system as the standard program for this purpose will be used.

HELiOS in HiCAD

Service Pack 2 2019 (V 2402)

New icons for HiCAD file formats

From SP2 onwards, new icons for the different HiCAD file formats e.g. SZA, FGA, KRA, VAA, PAA are available. These icons will be shown in the HELiOS result lists.

Documents X

Standard

W	Document number	Sheet	Index	Designation	Document type	Release status	File changed on	Creation date	U
	DN-000246				HiCAD Drawing	In Progress	08.04.2019 17:26:05	08.04.2019	Ac
	DN-000255			Mark-up		In Progress	08.04.2019 18:06:43	08.04.2019	Ac
	DN-000001	1		Assembly drawing	HiCAD Drawing	In Progress	24.10.2006 17:55:56	02.10.2006	Kc
	DN-000002	1		3-D model	HiCAD Part/Variant	In Progress	15.02.2019 13:49:01	02.10.2006	Kc
	DN-000003	1		Assembly drawing	HiCAD Drawing	In Progress	24.10.2006 17:55:59	02.10.2006	Kc
	DN-000004	1		3-D model	HiCAD Part/Variant	In Progress	15.02.2019 13:49:01	02.10.2006	Kc
	DN-000005	1		Assembly drawing	HiCAD Drawing	In Progress	24.10.2006 17:56:02	02.10.2006	Kc
	DN-000006	1		Assembly drawing	HiCAD Drawing	In Progress	24.10.2006 17:56:04	02.10.2006	Kc
	DN-000007	1		Assembly drawing	HiCAD Drawing	In Progress	24.10.2006 17:56:06	02.10.2006	Kc
	DN-000008	1		3-D model	HiCAD Part/Variant	In Progress	02.10.2006 17:19:59	02.10.2006	Kc
	DN-000009	1		Production drawing	HiCAD Drawing	In Progress	24.10.2006 17:56:13	02.10.2006	Kc
	DN-000010	1		3-D model	HiCAD Part/Variant	In Progress	02.10.2006 17:23:18	02.10.2006	Kc
	DN-000011	1		Production drawing	HiCAD Drawing	In Progress	25.10.2006 09:48:15	03.10.2006	Kc
	DN-000012	1		3-D model	HiCAD Part/Variant	In Progress	03.10.2006 13:30:26	03.10.2006	Kc
	DN-000013	1		Production drawing	HiCAD Drawing	In Progress	24.10.2006 17:56:21	03.10.2006	Kc



Number of records: 32

	File format	File type
	.SZA	HiCAD model drawing
	.KRA	HiCAD 3-D part
	.FGA	HiCAD 2-D part
	.VAA	HiCAD variant
	.PAA	HiCAD part archive
	.RPA	HiCAD P+ID

Service Pack 1 2019 (V 2401)

Article master sync when saving



The **Article master sync when saving**  that you use to specify which HiCAD part attributes are to be synchronized with which HELiOS article master data has been moved from the **Drawing** tab to **HELiOS PDM** at **Others** > **Link**  >

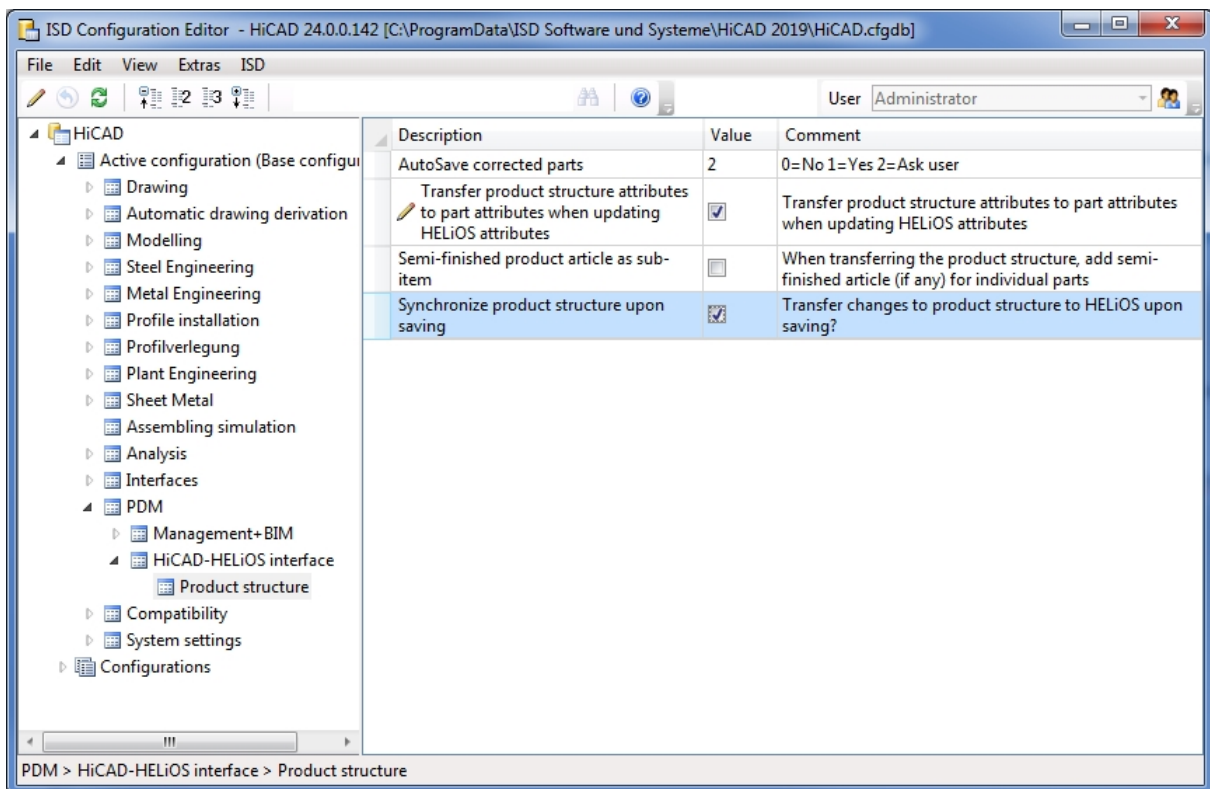
Major Release 2019 (V 2400)

Automatic transfer of product structure and article master attributes upon saving

In the **Configuration Editor** you can specify whether 1.) Changes to the product structure and 2.) HiCAD part attributes in the HELiOS article master are to be synchronized upon each saving in HiCAD.

1.) Auto-sync product structure upon saving:

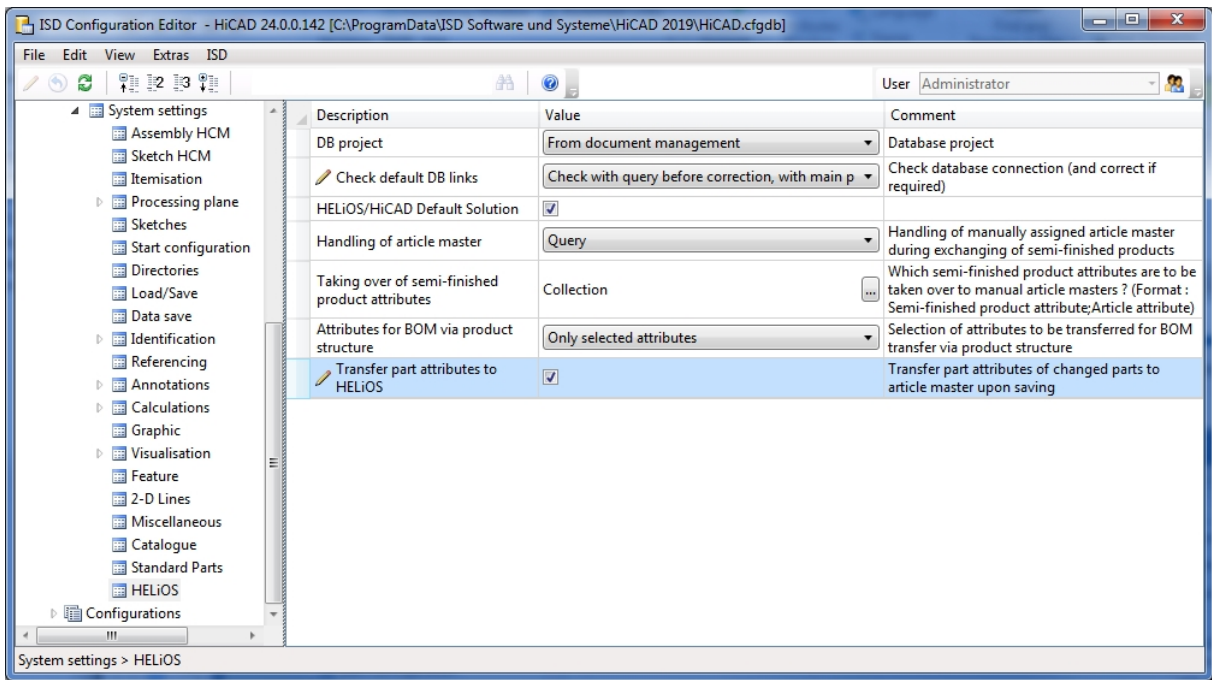
Go to **PDM > HiCAD-HELiOS interface > Product structure** and activate the **Synchronize product structure upon saving** checkbox:



After this, any changes to the product structure will be automatically transferred to HELiOS after each saving in HiCAD. This spares you the additional step of a manual transfer.



2.) Auto-sync part attributes and article master data:

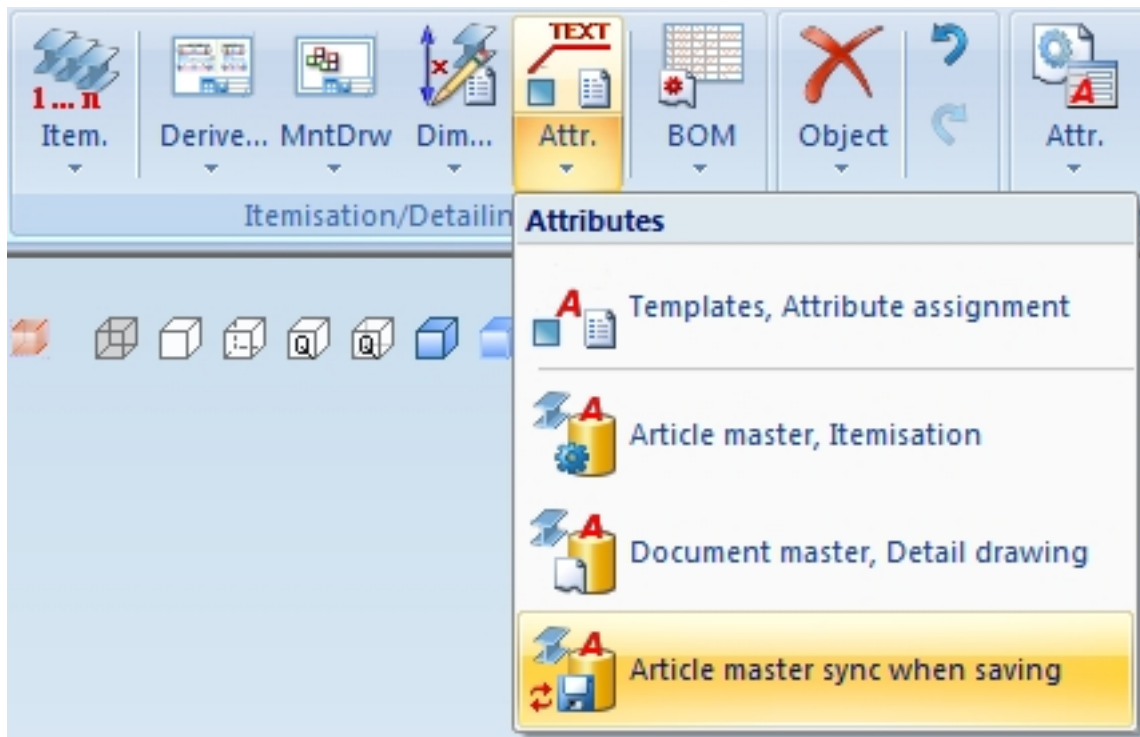
In the Configuration Editor, go to **System settings > HELiOS** and activate the **Transfer part attributes to HELiOS**:

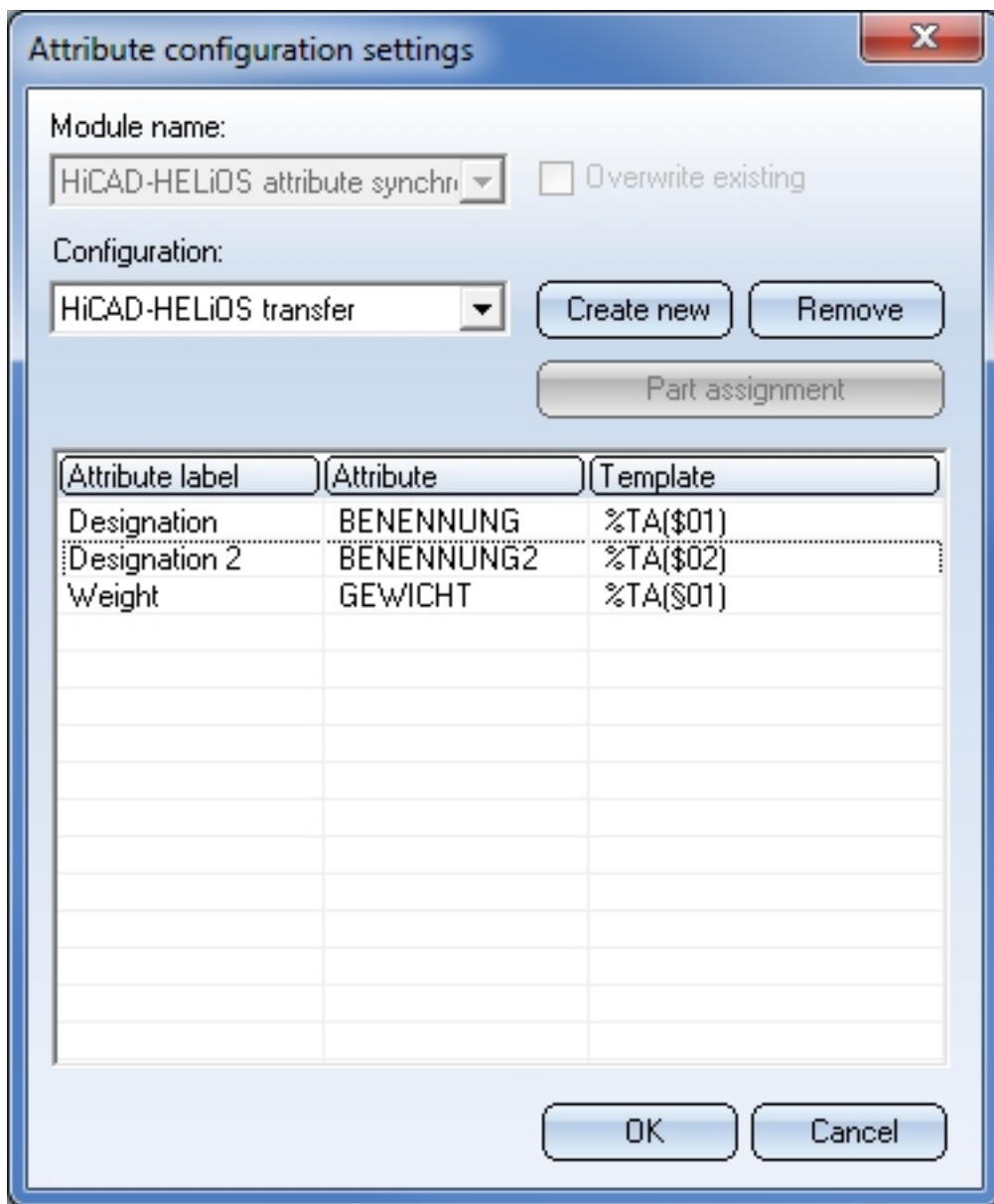


Changes to article master-relevant part attributes, will then be automatically taken over to HELiOS upon each saving in HiCAD.

 Please note:

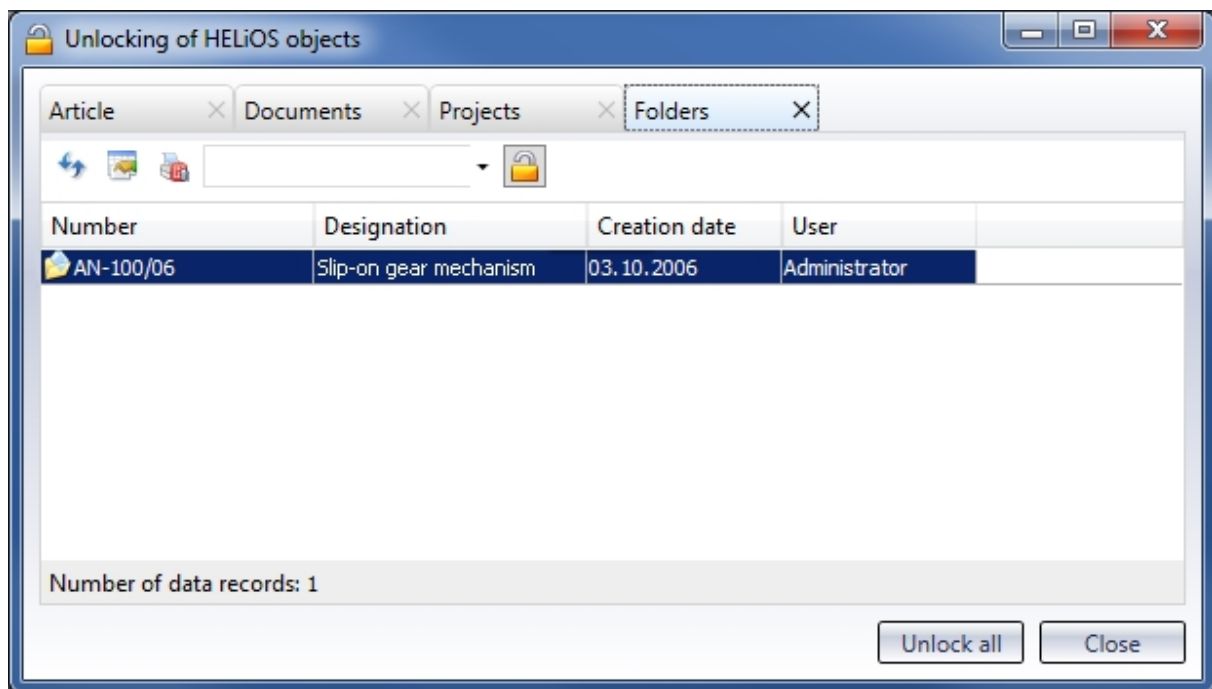
Choose **Drawing > Itemisation/Detailing > Attr.**  **> Article master sync when saving**  to specify which part attributes are to be synchronized with which article master data.





New dialogue for unlocking of HELiOS objects

For unlocking of objects that are currently edited by other instances, the "ReleasedNext" tool was used in previous versions. This tool has now been replaced with a revised, integrated dialogue window that opens after starting HELiOS (or HiCAD) if such objects have been found.



Excel BOM with bar optimisation

Similar to the Excel BOM output from HiCAD, a new BOM template called **PRODUCT_ISD_HICAD** is now available, which allows the output of bar optimisations for BOM exports via product structure.

Bar list							
Assy. No.	!header!HEL_SACHNUMMER!			Created by	!header!HEL_USER!		
Designation	!header!BENENNUNG!			Created on	!header!HEL_GUELTIG!		
!BarHeader!		!BarCount!			!BarWaste!		
Item	Number	Length (mm)	Cut (Web)	Cut (Flange)	Designation		
!table!Proc !table!%Anz !table!Bauteil.LAENGE! !table!Bauteil.COMPONENT_CUTT! !table!Bauteil.COMPONENT_CUTT! !table!Bauteil.BENENNUNG!							



Pre-mounted assemblies in BOMs

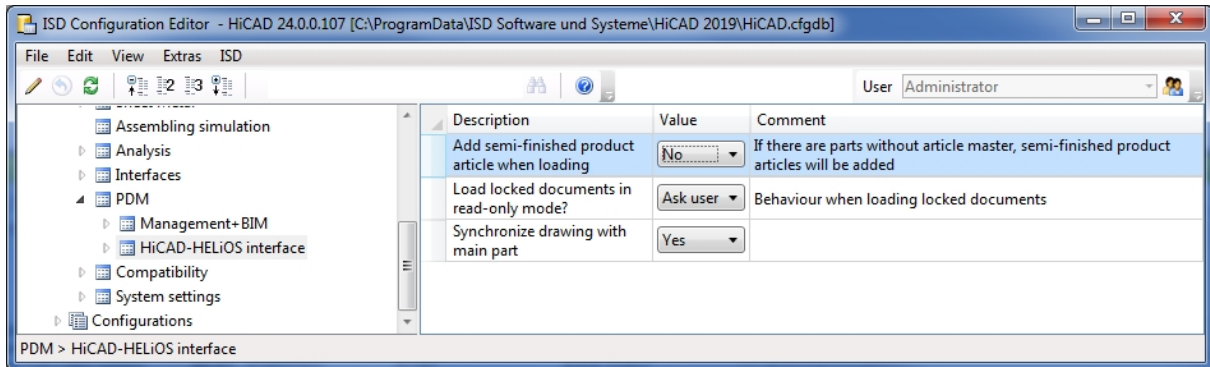
When working with pre-mounted assemblies in practice, you sometimes want only the assemblies, but not their sub-parts to be shown in BOMs. This can be achieved via the article attribute **COMPONENT_PREINSTALLED**, which needs to be assigned to the article master of the pre-mounted assembly.

To ensure that the attribute will be shown in the HELIOS article data mask, you need to adjust the masks in HELIOS with the Mask Editor accordingly; that is, you need to add the **COMPONENT_PREINSTALLED** attribute as a new data field and, in so doing, create a new checkbox. If this checkbox is activated in the article master of an assembly, this assembly will be regarded as a "pre-mounted" assembly.

Loading of the current article master of semi-finished products in attached parts

In previous versions, existing article masters of semi-finished products were not transferred to HiCAD when inserting attached parts such as Steel Engineering connections, stairs, railings, element installations, profile installations etc.

From HiCAD 2019 onwards this behaviour can be changed via a setting in the Configuration Editor: At **PDM > HiCAD-HELiOS Interface** you can find the parameter **Add semi-finished product article when loading**. The ISD default setting is **No**, i.e. the article master of semi-finished products will not be transferred.



For example, when transferring article masters of semi-finished products from user-defined catalogues, set the parameter to **Yes**.

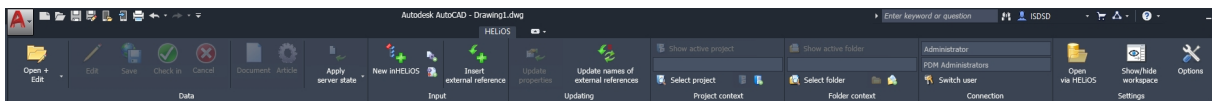
HELiOS for AutoCAD

Service Pack 2 (V 2402)

New functions and options in the HELiOS-AutoCAD interface

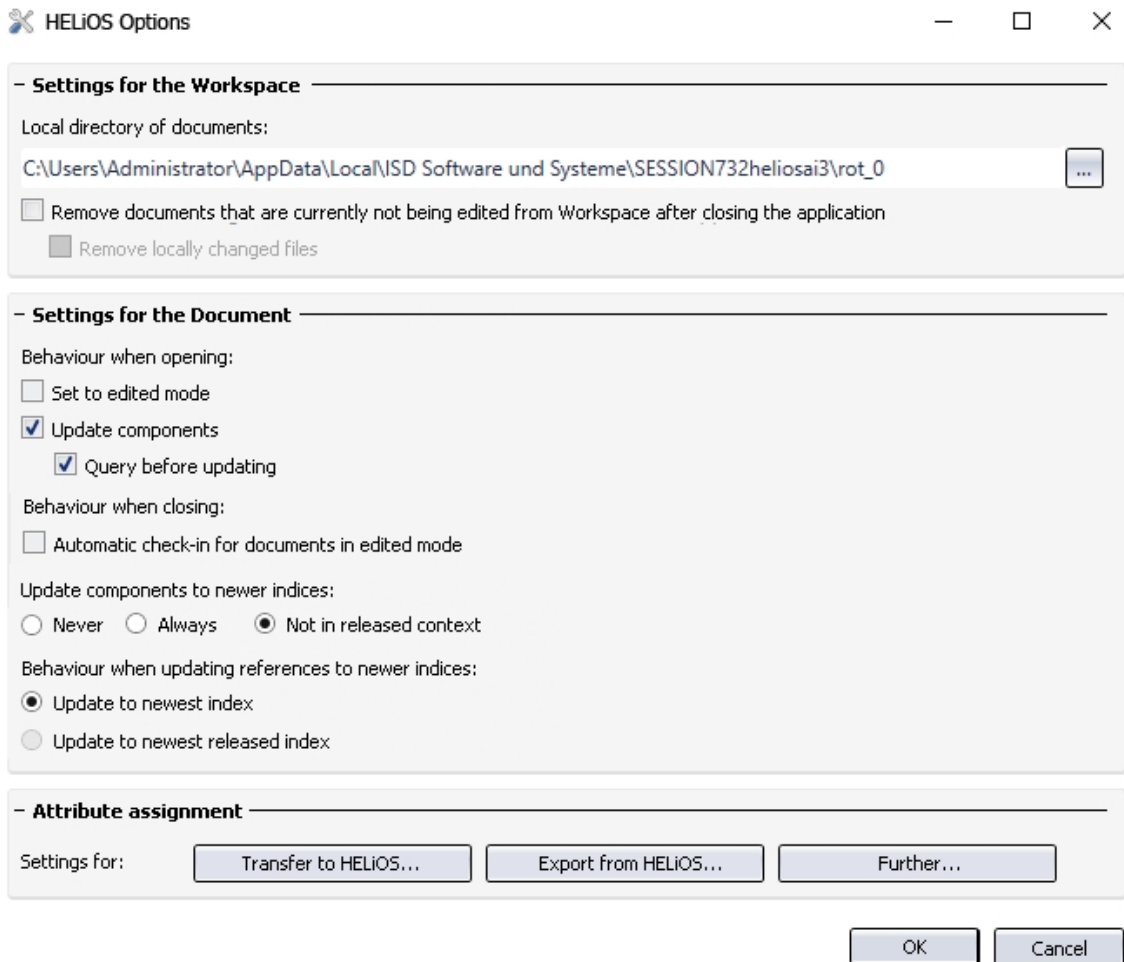
Service Pack 2 of HELiOS 2019 offers a number of new functions for the HELiOS-AutoCAD interface.

Functions known from other CAD interfaces have been added to the Ribbon, e.g. the **New in HELiOS** function that allows a convenient transfer of CAD model structures to the HELiOS database, and functions for the updating of loaded documents to newer Server states.



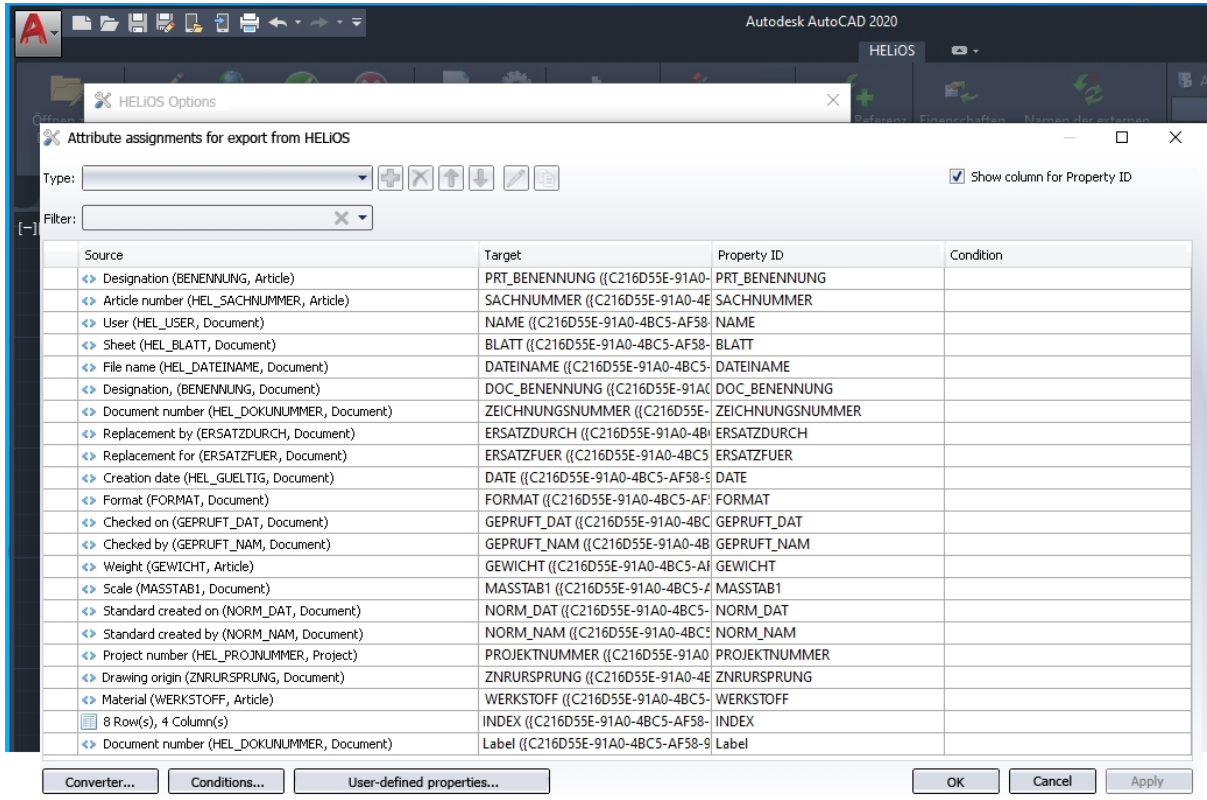
Furthermore, the **HELiOS Options** dialogue now contains new setting options for the loading and saving behaviour of documents.

In HELiOS 2019 Service Pack 2 the AutoCAD interface was adapted in many areas to the Inventor interface. For instance, it now also offers options for controlling the updating of XRefs.



Attribute mapping

Attribute assignments for a **Transfer from AutoCAD to HELiOS** or **Export from HELiOS to AutoCAD** respectively, can now also be defined in AutoCAD via an extended configuration interface:



Some application-specific characteristics must be observed here, e.g. the mandatory assigning of an **Area** in AutoCAD.

Optimized HELiOS Workspace


The **HELiOS Workspace** dialogue window that is available to you in HELiOS-CAD interfaces has been revised and optimized.

Loaded	Chang	Open	Document number	Designation	Article number	Designation	Workflow status
<input checked="" type="checkbox"/>			DN-000253		SN-025783	Framework	
<input checked="" type="checkbox"/>			DN-000254	Production drawing	SN-025784	Test article r. pts.	
<input checked="" type="checkbox"/>			DN-000255	Production drawing	SN-025785		
<input checked="" type="checkbox"/>			acadiso.dwt	Production drawing	SN-026061		

If, after performing an update installation to SP2, the (old) Workspace still contains any documents, a message will be displayed, asking you to clear the Workspace and restart the application, so that the new Workspace can be called.

Name	Changed, local	Document number	Release status	Document type	File changed on
DN-000252		DN-000252	Status: In progress, Workflow: general document	Office document	10.01.2019 11:08:49
Document1.docx		Document1.docx	Status: In progress, Workflow: general document	Office document	10.01.2019 11:08:29
Document2.docx		Document2.docx	Status: In progress, Workflow: general document	Office document	10.01.2019 11:08:38
Document3.docx		Document3.docx	Status: In progress, Workflow: general document	Office document	10.01.2019 11:08:56
Folder1.xlsx		Folder1.xlsx	Status: In progress, Workflow: general document	Office document	10.01.2019 11:09:03
Folder2.xlsx		Folder2.xlsx	Status: In progress, Workflow: general document	Office document	10.01.2019 11:09:32

Number of records: 6

Use the additional option  **Workspace to default position** to dock the window into default position with a simple mouse click.

The screenshot shows the HELIOS workspace interface. At the top, there are buttons for 'Open via HELIOS', 'Show/hide workspace', and 'Options'. A dropdown menu is open under 'Show/hide workspace', showing 'Show/hide workspace' and 'Workspace to default position'. A tooltip for 'Workspace to default position' is displayed, stating: 'Moves the Workspace back to the default position (docked on the right side)'. Below the menu, there is a toolbar with a 'Standard' dropdown and a table of workspace items.

	Load	Lo	Op	Open + Edit	W
					SN-025784 Test article r. pts.
					SN-025785
					SN-026061

Model structure: Display of product structure

If only a document structure instead of a model structure exists for a document, this document structure will be displayed in the Model structure tab of the HELiOS-AutoCAD interface.

Document	O	O	In	In	W	Designation
DN-002744			a			total.dwg
DN-002745			b			2 circles.dwg
DN-002746			b			circle.dwg
DN-002747			b			rectangle.dwg
DN-002748			b			circle and rectangle.dwg
DN-002745			b			2 circles.dwg
DN-002746			b			circle.dwg
DN-002747			b			rectangle.dwg
DN-002746			b			circle.dwg
DN-002747			b			rectangle.dwg

Service Pack 1 2019 (V 2401)

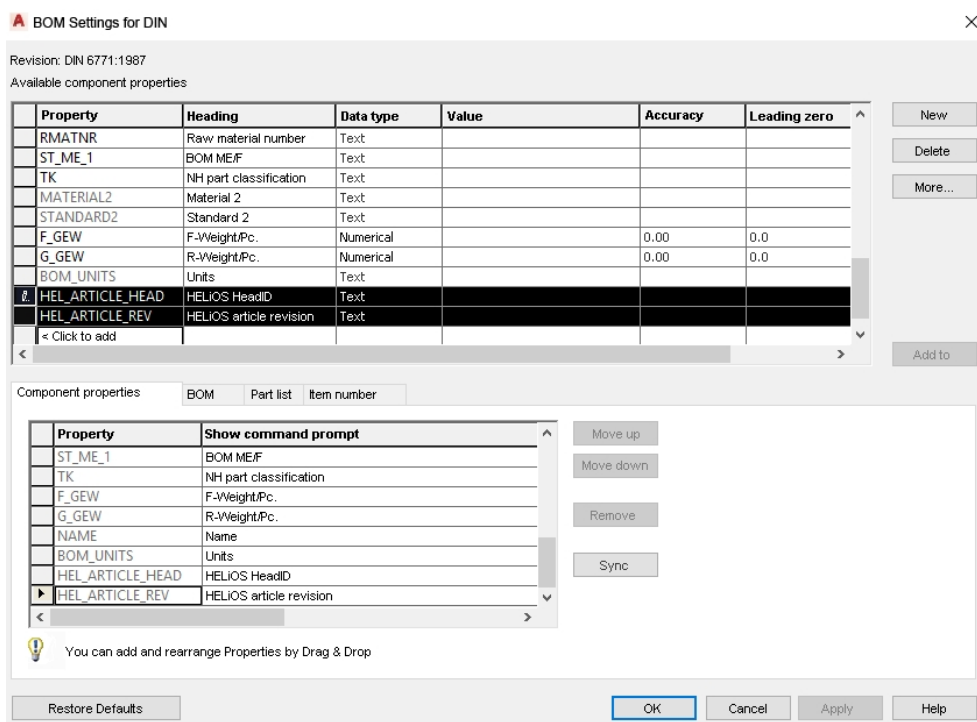
AutoCAD 2020 and AutoCAD Mechanical 2019/2020

HELiOS 2019 SP1 supports Autodesk AutoCAD Version 2020, and AutoCAD Mechanical Versions 2019 and 2020.

Bills of Materials

The HELiOS-AutoCAD Mechanical interface supports the creation of BOMs.

For this to happen, you just need to add two HELiOS attributes in your DWT template.

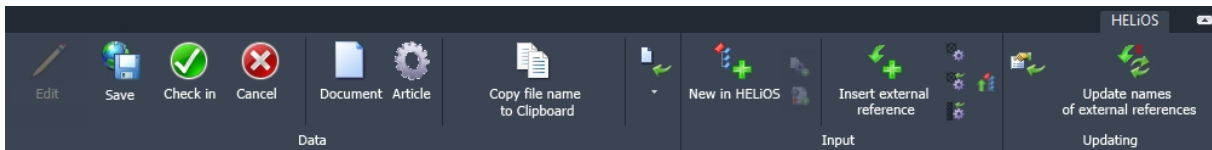


HELiOS for AutoCAD Mechanical

Service Pack 2 (V 2402)

New functions in the HELiOS-AutoCAD Mechanical interface

Service Pack 2 of HELiOS 2019 offers a number of new functions for the HELiOS-AutoCAD Mechanical interface.

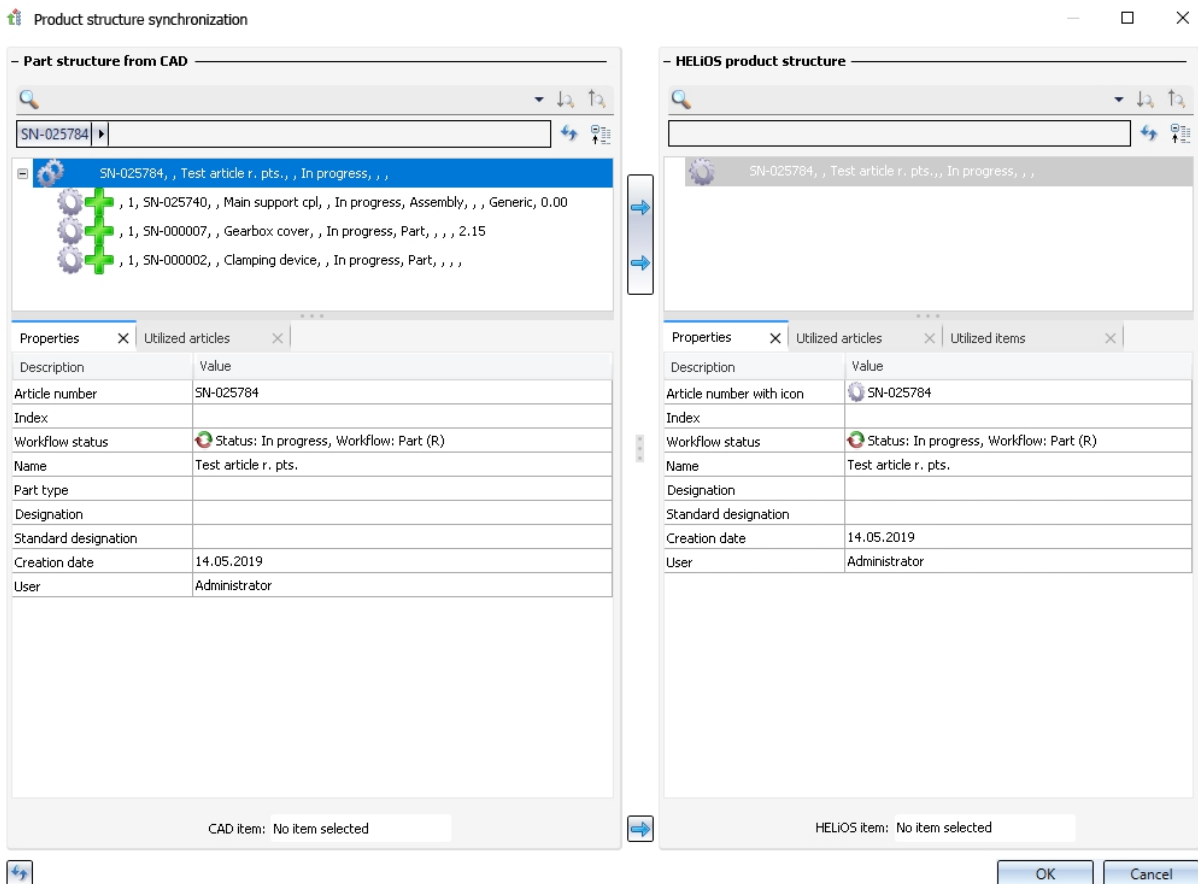


Besides some new functions on the HELiOS Ribbon tab the HELiOS Workspace and attribute mapping is now available to you.

Also, the Product structure synchronization function that is already known from CAD systems such as HiCAD has been intergrated into the HELiOS-AutoCAD Mechanical interface.



You can find it in the **Input** function group of the HELiOS Ribbon tab: **Transfer product structure (1-level)**.



Attribute mapping

Mit Service Pack 2 wurde die Attributmapping-Technologie der AutoCAD-Kopplung an den aktuellen MultiCAD-Standard von HELIOS angepasst. -

Für AutoCAD Mechanical bedeutet dies, dass zusätzlich auch Positionsattribute und Attribute für Teilreferenzen zwischen CAD-Applikation und HELIOS-Datenbank konfiguriert werden können.

HELiOS for Autodesk Inventor

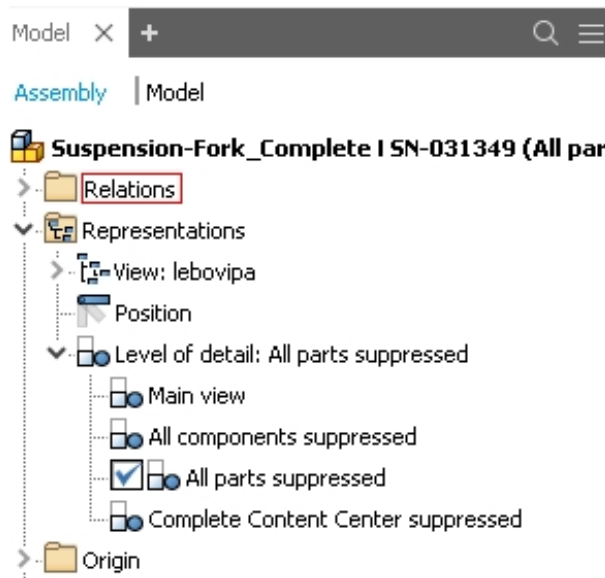
Service Pack 2 (V 2402)

Performance optimization and utilized Levels of details

In previous versions, some processes, e.g. the transfer of model drawings via the functions **New in HELiOS** or **Derive model structure** could take a long time for larger amounts of data.

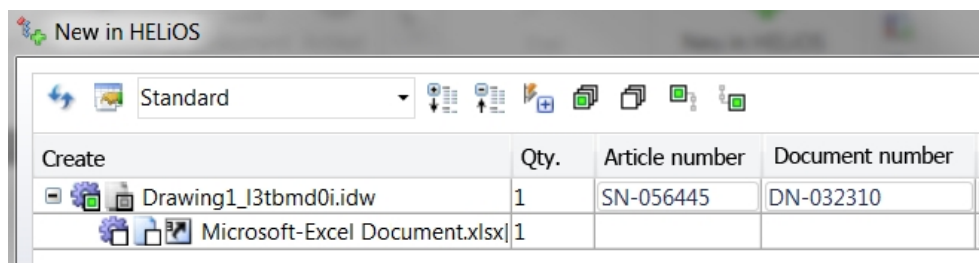
The performance for such tasks could be increased significantly with HELiOS 2019 SP2.

Furthermore, after using the functions **New in HELiOS**, **Update server state** (or the automatic updating upon opening), **Derive model structure**, **Create index** and **Batch reimport** the level of detail will be called again that existed before calling the functions (and the resulting changes).



New in HELiOS: Drawings

When saving drawings with the **New in HELiOS** function, referenced third party documents, too, will be considered, which can be linked to the drawing document and transferred to the database.



Please also note the different options you have when you save drawings: With the **New in HELiOS** function, drawings are created, complete with their models, as new documents with linked article(s), in the HELiOS database. The **New (Document / Find article)** function allows you to link further drawings to articles which already exist in HELiOS, instead of entering them repeatedly.



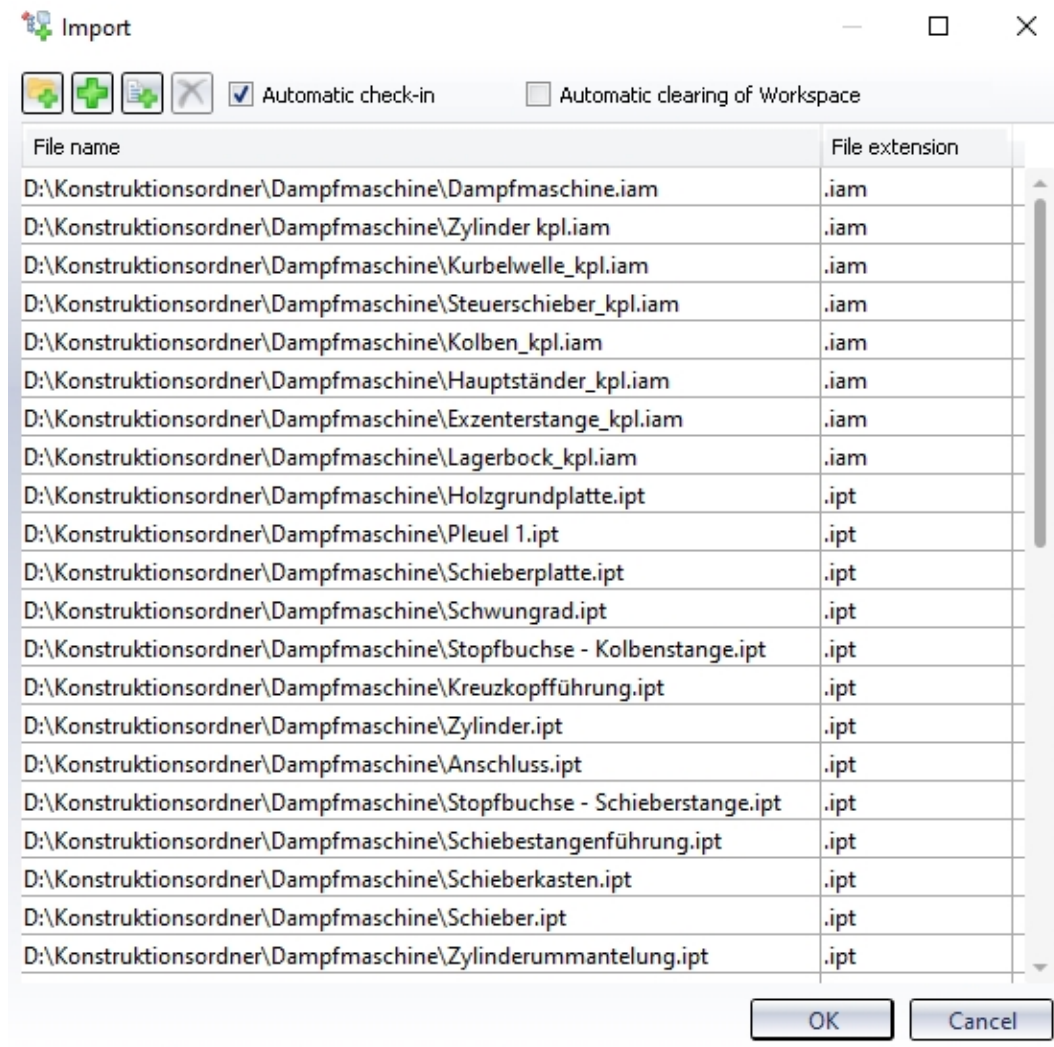
Furthermore, you can activate the additional **Create drawing and exchange models** function on the HELIOS Ribbon, which enables you to automatically exchange a local part reference in a drawing with an already existing HELIOS article context of the corresponding part.

Enhanced batch import

The **Batch import** function for models and drawings (as well as the Batch reimport function) now offer the option to import files via a text file list of file paths.

Use the **Automatic clearing of Workspace** checkbox to determine whether the affected files are to be removed immediately from the Workspace after carrying out the batch import. Activating this option makes sense if, for instance, a repeated loading of identical parts occurring multiple times in a drawing may affect the performance. Documents which are already located in the Workspace when the import is carried out are not affected by the clearing.

Furthermore, parts that have been changed and set to "edited" mode in the course of the procedure will also be "checked in", if the import for the drawing has been completed (if the **Automatic check-in** checkbox has been activated).



Attribute mapping: Enhancement for file property with case differentiations

Attribute mappings of the type **File properties with case differentiations** can now be combined with **Conditions**.

In this way you can, for instance, distinguish the **Part type** of semi-finished products from that of parts or model drawings which are no semi-finished products.

Attribute assignments for import to HELiOS

Type:

Source	Target	Condition
- Article (5)		
Material	↔ Workshop (WERKSTOFF, Article)	NoStandardAndNoSemiFinishedPart
Weight	↔ Weight (GEWICHT, Article)	NoStandardAndNoSemiFinishedPart
Volume	↔ Volume (VOLUMEN, Article)	NoStandardAndNoSemiFinishedPart
Designation	↔ Designation (BENENNUNG, Article)	NoStandardAndNoSemiFinishedPart
File extension, with 2 case differentiations	Part type (COMPONENT_TYPE, Article)	NoStandardAndNoSemiFinishedPart



Please note:

Changes to the delivery state of HELiOS only take effect for new installations. Already existing attribute mappings of a system will not be overwritten by update installations.

Recogniton of semi-finished product master data by length

If a semi-finished product is inserted from the Inventor Content Centre "As Standard" and transferred to HELiOS, HELiOS will recognize the article master when inserting a second semi-finished product of the same type and will create a corresponding, new document.

This automatism has been enhanced by the fact that the HELiOS document master of a semi-finished product can also be recognized by a concrete semi-finished product length in order to prevent a renewed creation of a semi-finished product document with exactly the same length.

Service Pack 1 2019 (V 2401)

Inventor 2020

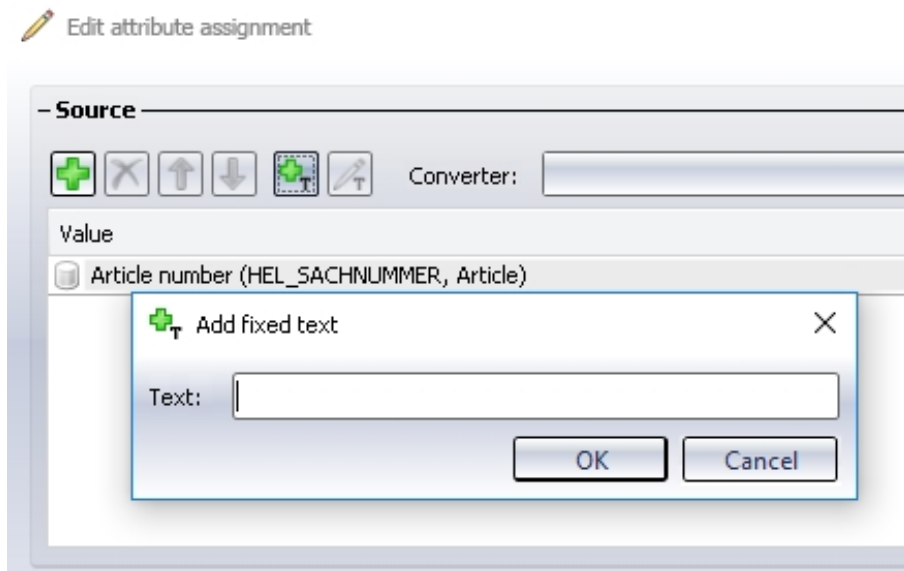
The multi-CAD interface of HELiOS 2019 Service Pack 1 supports Inventor 2020.

Further enhanced attribute mapping

The bilateral mapping of attributes between Inventor and HELiOS (Inventor -> HELiOS / HELiOS -> Inventor) that has been introduced with the Major Release of HELiOS 2019 has been further enhanced.

You have now the option to edit invalid properties (e.g. field that have been marked as errors when something has not been unambiguously assigned) by double-clicking on the corresponding field.

You can define a fixed text serving as a separator between attributes.



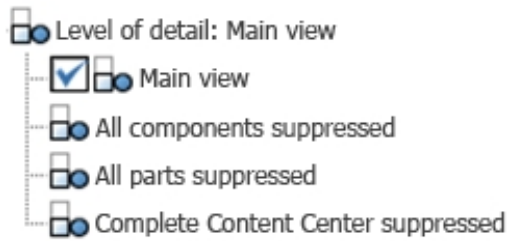
Levels of detail

Inventor uses so-called **Levels of detail** to control which components are to be loaded into the memory or which of them are to be displayed.

When transferring parts to HELiOS (New in HELiOS, Batch import, Derive model structure), or using any function causing an exchange of parts, HELiOS will automatically use the main view.

All other functions work with the currently loaded parts and leave the non-loaded parts unchanged.

A prerequisite for a loading of parts for other levels of details that the main view is that the part has been completely transferred to HELiOS beforehand.



During editing of such assemblies the following will happen: The parts that have been suppressed as a result of the chosen level of detail will remain unchanged in HELiOS (i.e. they will not be removed from the model structure either), new parts will be added to the model structure, and deleted parts will be removed from the model structure.

Functions such as **Edit (all)**, **Check-in (all)** and **Cancel (all)** work with the non-suppressed parts.


When working with levels of details, you must confirm to switch to the highest level of detail (i.e. the main view) if you call the **New in HELiOS** or the **Derive model structure** function:

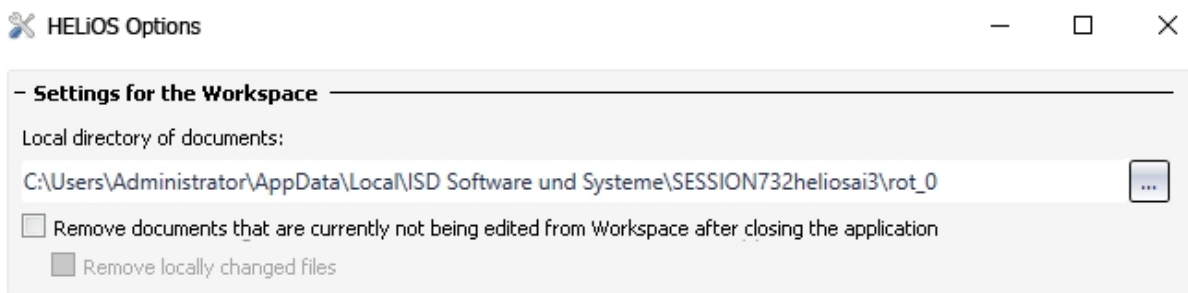


Please note:

Derived replacement objects are special cases that are currently not supported yet.

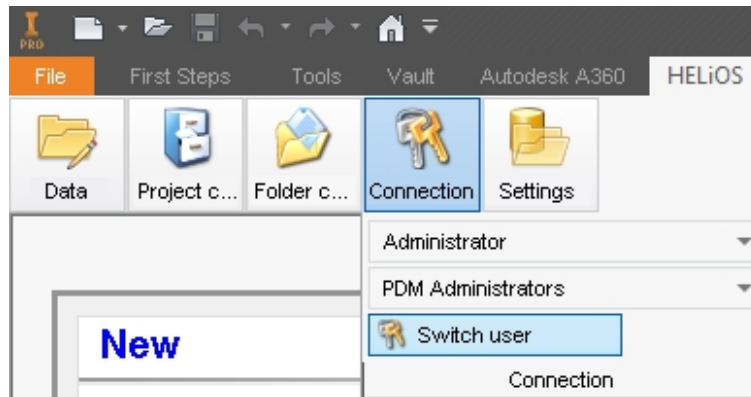
Workspace settings

You can now determine the path of the workspace directory yourself by clicking in the  icon in the HELiOS Options dialogue window.



Switch user

In the **Connection** function group of the HELiOS Ribbons you have the option to switch the current HELiOS user by logging in/out while the interfaced CAD application is running.



Creating indices when working in a document-oriented manner

If you work in a purely document-oriented manner, i.e. always without article masters, and assign a new index to a document master without a linked article master with the **Create index** function, HELiOS checks whether the underlying geometry is linked to a drawing. If a linked drawing is found, the document master of the drawing will also be offered for indexing, and, finally a link between indexed drawing and geometry will be created.

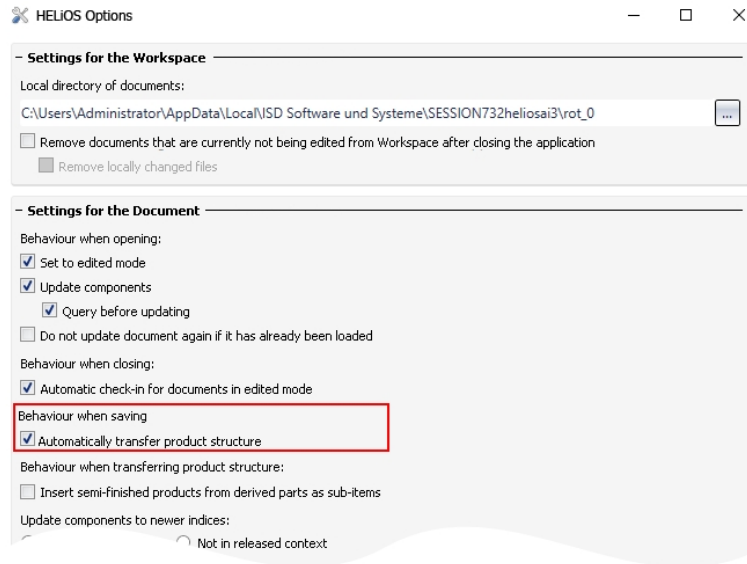
Derive via model structure



If errors occur when using the **Derive model structure** function, these will be shown beneath the model structure in the dialogue window. Double-click on a row of the error report to jump to the corresponding row in the product structure that causes the error. This principle now also applies to missing mandatory entries.

Option for product structure sync control when saving

In the **HELiOS Options** dialogue window, you can now activate or deactivate the automatic product structure synchronization when saving to HELiOS.

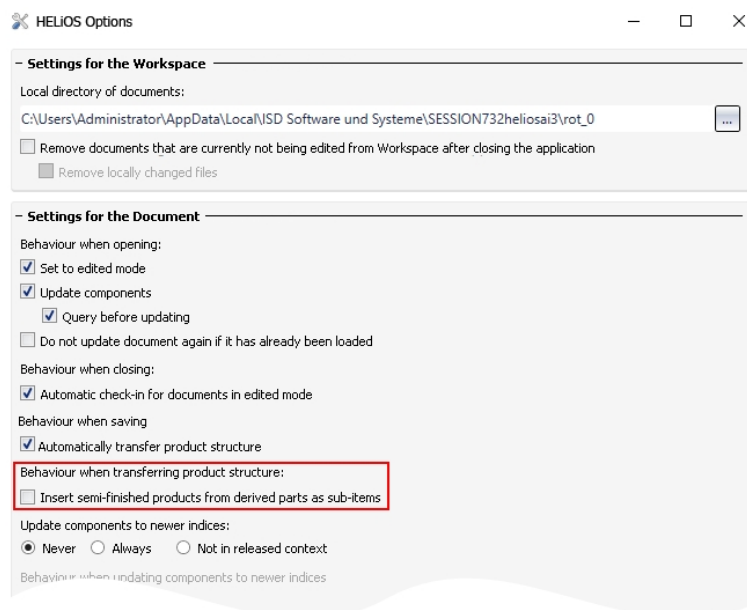


For instance, after an initial product structure transfer in connection with an ERP system data transfer it is sometimes preferable to allow only one manual synchronization.

Creating semi-finished products as structure items

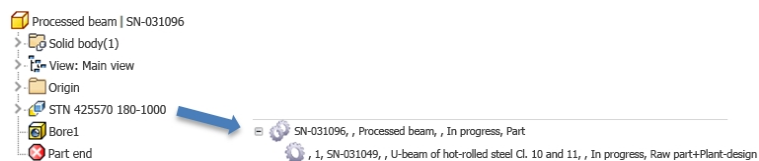
In the **HELiOS Options** dialogue window you can find the new option **Insert semi-finished products from derived parts as sub-items** beneath **Behaviour when transferring product structure**.

If this option has been activated, semi-finished product article masters (identified by the HELiOS **Part type "Raw part+Plant-design"**) which are processed in Inventor as derived parts/assemblies (Derived Component), will be transferred as sub-items to the HELiOS product structure.



Inserted semi-finished product sub-items will be marked as "BOM-relevant" in HELiOS.

If it is not possible to clearly assign a dependent part of the HELiOS Part type "Raw part+Plant-design", no sub-item will be entered. The same applies to dependent parts of another Part type than "Raw part+Plant-design".

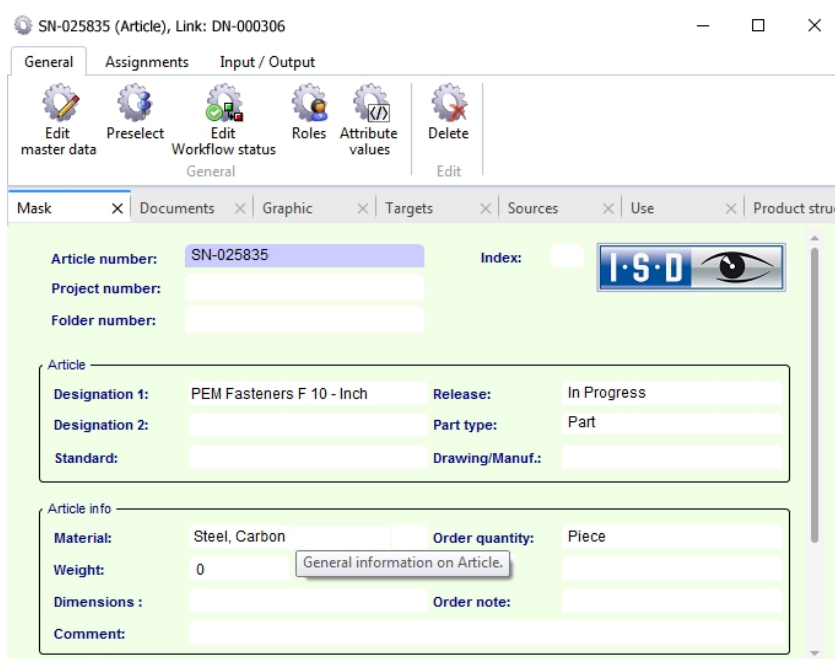


Handling of standard parts




When choosing **Input > New (Document/Article)** on the HELiOS Ribbon tab you can now also transfer standard parts from the Inventor Content Center to HELiOS.

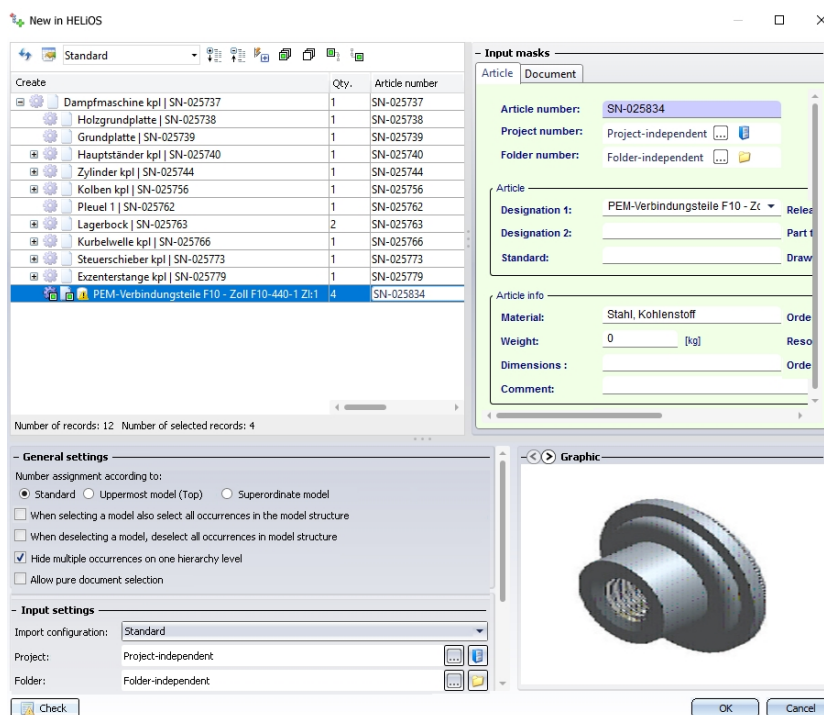
In the process, Family and Member IDs will be written into the HELiOS article master.



Please note:

Standard part recognition is only guaranteed if the document/article link exists, but will not work for a purely document-based working method.

When taking over assemblies with the **New in HELiOS** function, standard parts that were not inserted via the Inventor Content Center and whose Family and Member ID can therefore not be transferred to the HELiOS article master are marked with a  symbol.



Major Release 2019 (V 2400)

Performance

A performance increase of about 8% could be achieved for model structure build-up in Inventor with HELiOS 2019.

Attribute mapping

As of HELiOS 2019 the mapping of attributes between Inventor and HELiOS can be performed, in both directions, via new dialogues in the user interface.

Processed	Property/Value	Attribute	Condition	Converter	Type
	FileNameExt, mit 2 Fallunterscheidungen	Teiletyp (COMPONENT_TYPE, Artikel)			Dateieigenschaft mit Fallunterscheidungen
	Material	Werkstoff (WERKSTOFF, Artikel)		DefaultStringConverter	Modelleigenschaft
	Mass	Gewicht (GEWICHT, Artikel)		DivideBy1000FloatConverter	Modelleigenschaft
	Volume	Volumen (VOLUMEN, Artikel)		MultiplyBy1000FloatConverter	Modelleigenschaft
	Description	Benennung (BENENNUNG, Artikel)		DefaultStringConverter	Modelleigenschaft
	Stck (de), Piece (en)	Mengeneinheit (COMPONENT_QUANTITY_UNIT, Artikel)			Fester Wert
	FileNameExt, mit 6 Fallunterscheidungen	Dokumenttyp (DOCUMENT_TYPE, Dokument)			Dateieigenschaft mit Fallunterscheidungen
	FileNameExt, mit 5 Fallunterscheidungen	Benennung (BENENNUNG, Dokument)			Dateieigenschaft mit Fallunterscheidungen

Identification options for substitution geometries

For use cases where multiple geometries are linked to the same article master - e.g. one exact model and several simplified models - you can indicate the document that is relevant for a synchronization of the article master attributes or the product structure. For all other document no synchronization must be performed.

In such situations you can work with the document attribute **Substitution document (HEL_SUBSTITUTION_DOCUMENT)**.

HELiOS Attribute Management: Document

Designation	Name	Data type	Length	Object
Substitution document	HEL_SUBSTITUTION_DOCUMENT	BOOL		Document (Index)

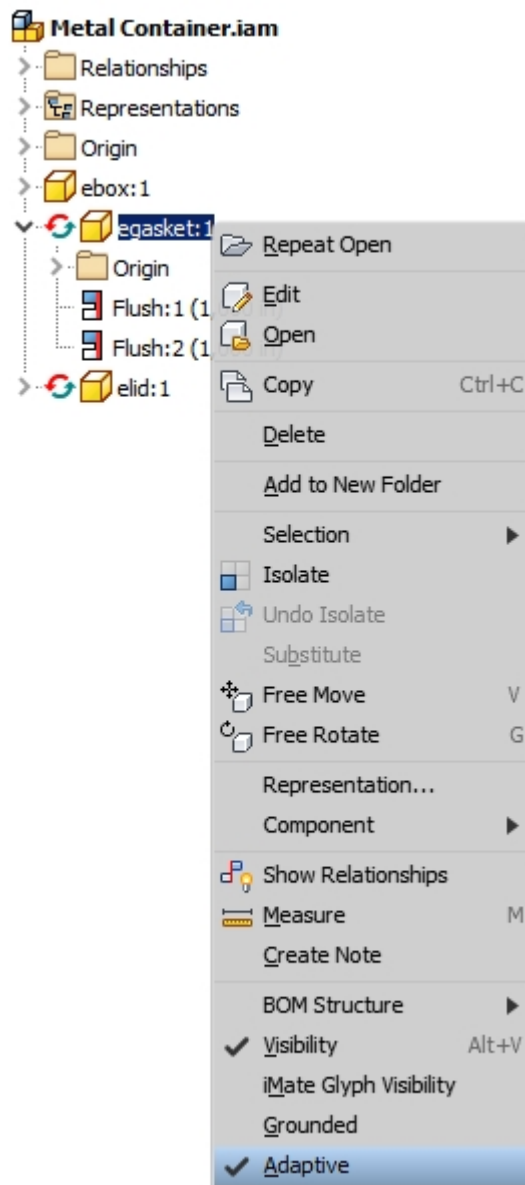
When you use it, all documents except for one will be marked. The product structure synchronization will then be performed out of a substitution document, which prevents an accidental overwriting of attributes or product structures when there is an article that is linked to several CAD documents.

Support of adaptive geometries

HELiOS 2019 supports so-called **adaptive geometries** in Inventor.

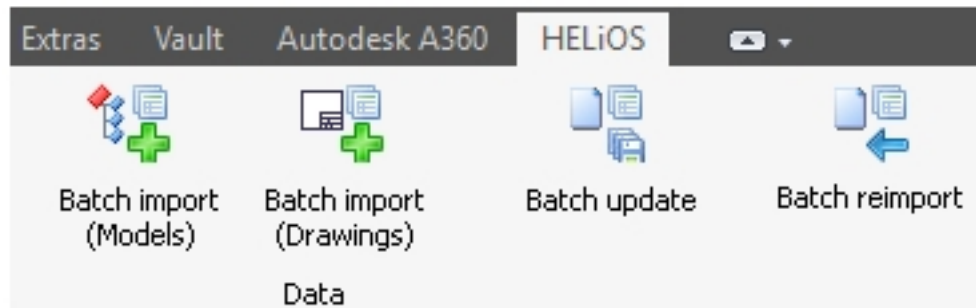
Adaptive geometries and parts consist of underdefined components for possible later design changes, e.g. in cases where you expect a part or a sub-assembly of a still unknown size to be inserted in a still incomplete assembly, or where the position and size of an element depends on the position and size of a different element in a part or assembly.

These adaptive elements are marked accordingly in Inventor and will be recognized by HELiOS, to ensure that their marking will still be preserved after their transfer to the HELiOS database.



Batch update and Batch reimport

In the **Data** function group of the HELiOS Ribbon tab you can now find the new functions **Batch update** and **Batch reimport**.



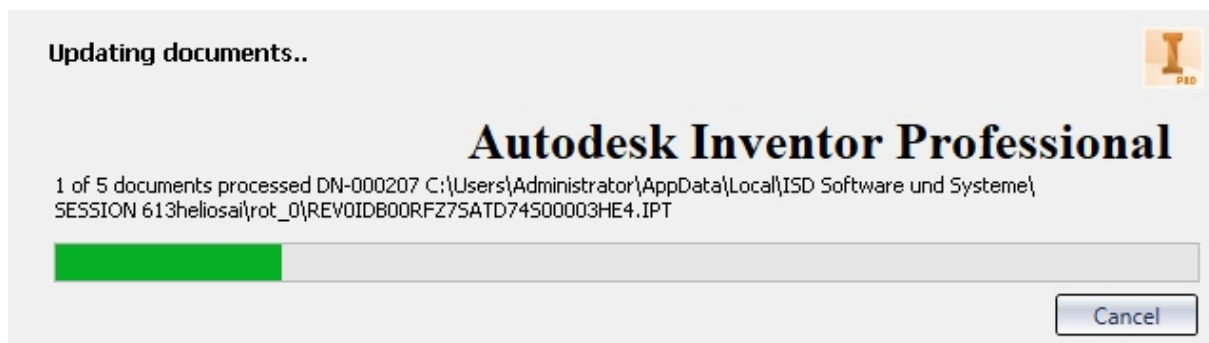
Use the **Batch update** function to update multiple HELiOS documents (batches) in one step via the Combined search mask.

The documents will be loaded, set to "In progress", updated and checked in one by one (they will not be automatically removed from the workspace).

In this way you can update

- older documents to a current CAD version CAD version e.g. Inventor 2016 -> Inventor 2018),
- due to changed HELiOS configurations (e.g. if a user has modified the attribute assignments and older files have not be changed accordingly yet),
- due to changed CAD configurations,
- of document previews,
- after taking over of data, if this data have not been saved by the CAD interface (i.e. a subsequent taking over of preview images, model and product structures, attribute assignments etc. takes place),

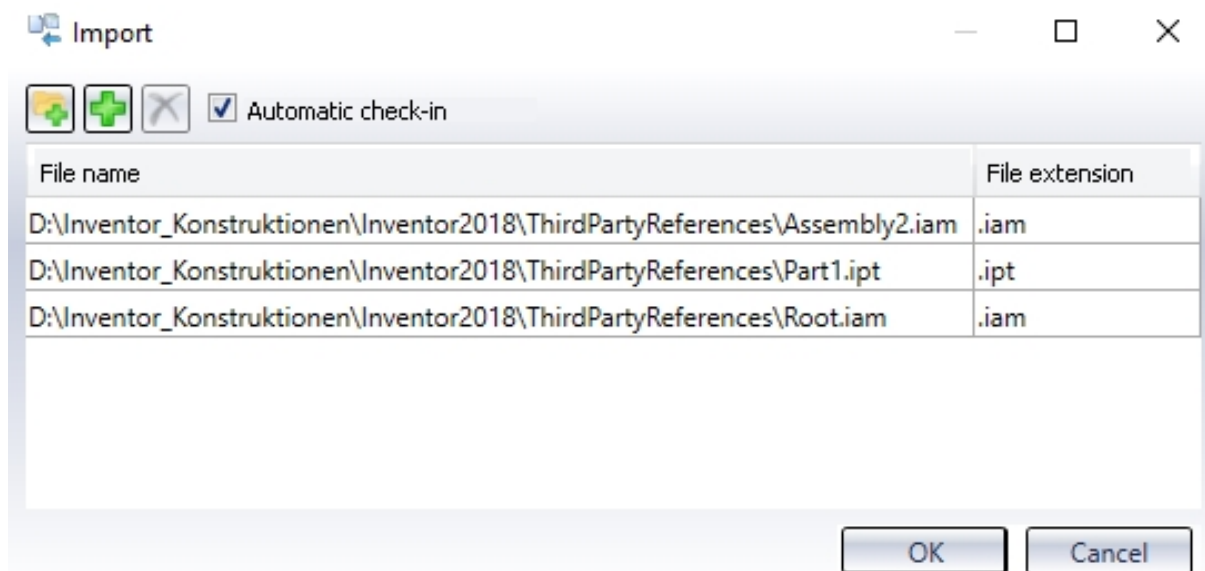
and, in doing so, avoid time consuming, manual opening and saving of the affected documents.



With the **Batch reimport** you can update existing HELiOS documents via a renewed import of the corresponding files from a file system, e.g. if a change of HELiOS documents through external tools (e.g. update to newer CAD versions) should be followed by a subsequent update of the documents in HELiOS, or the import of subsequent corrections of original files is to take place when transferring data.


This takes place via a selection dialogue works in the same way as the one for the **Batch import** function.

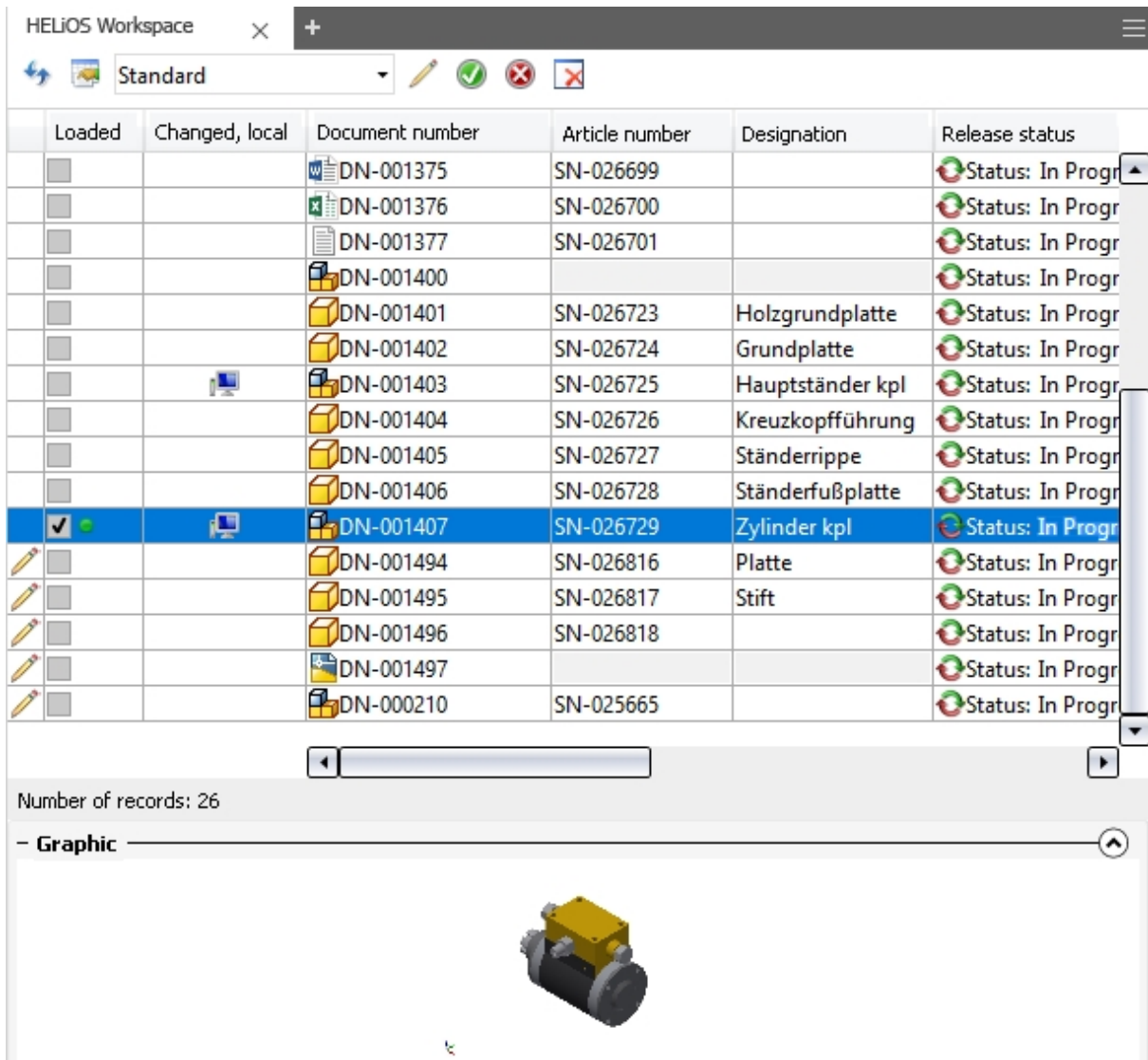
An **Automatic check-in** of the documents into the HELiOS database will be carried out if you activate the corresponding checkbox at the top of the dialogue window.





For both functions the update procedure will be recorded in a log file that can be viewed subsequently.

Indication of locally changed files in Workspace


In the HELIOS Workspace you can find the new **Changed, local** column, where a computer symbol  indicates that a document has been changed and saved locally since the last synchronization with HELIOS.



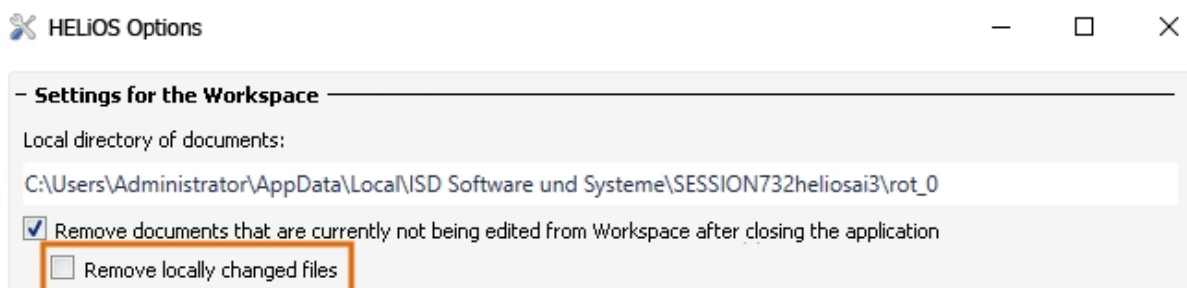
Loaded	Changed, local	Document number	Article number	Designation	Release status
<input type="checkbox"/>		DN-001375	SN-026699		Status: In Progr
<input type="checkbox"/>		DN-001376	SN-026700		Status: In Progr
<input type="checkbox"/>		DN-001377	SN-026701		Status: In Progr
<input type="checkbox"/>		DN-001400			Status: In Progr
<input type="checkbox"/>		DN-001401	SN-026723	Holzgrundplatte	Status: In Progr
<input type="checkbox"/>		DN-001402	SN-026724	Grundplatte	Status: In Progr
<input type="checkbox"/>		DN-001403	SN-026725	Hauptständer kpl	Status: In Progr
<input type="checkbox"/>		DN-001404	SN-026726	Kreuzkopfführung	Status: In Progr
<input type="checkbox"/>		DN-001405	SN-026727	Ständerrippe	Status: In Progr
<input type="checkbox"/>		DN-001406	SN-026728	Ständerfußplatte	Status: In Progr
<input checked="" type="checkbox"/>		DN-001407	SN-026729	Zylinder kpl	Status: In Progr
<input type="checkbox"/>		DN-001494	SN-026816	Platte	Status: In Progr
<input type="checkbox"/>		DN-001495	SN-026817	Stift	Status: In Progr
<input type="checkbox"/>		DN-001496	SN-026818		Status: In Progr
<input type="checkbox"/>		DN-001497			Status: In Progr
<input type="checkbox"/>		DN-000210	SN-025665		Status: In Progr

Number of records: 26

– Graphic –



In the **HELIOS Options** dialogue window you can determine whether existing, locally changed documents are to be removed from the Workspace or not when Inventor is closed.



HELIOS Options

– Settings for the Workspace –

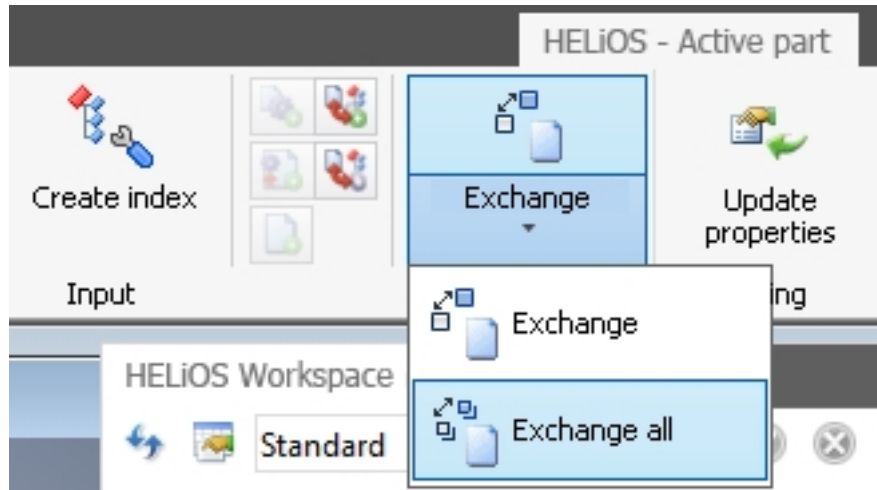
Local directory of documents:
 C:\Users\Administrator\AppData\Local\NSD Software und Systeme\SESSION732heliosai3\rot_0

Remove documents that are currently not being edited from Workspace after closing the application

Remove locally changed files

Exchange active part


In the HELiOS Ribbon tab for the active part you can find the new functions **Exchange** and **Exchange, all**.



These enable you to exchange components in your model drawing via the **Combined search** in HELiOS.


Exchange replaces one selected component in your drawing with a different one (e.g. a newer version) from the HELiOS database.

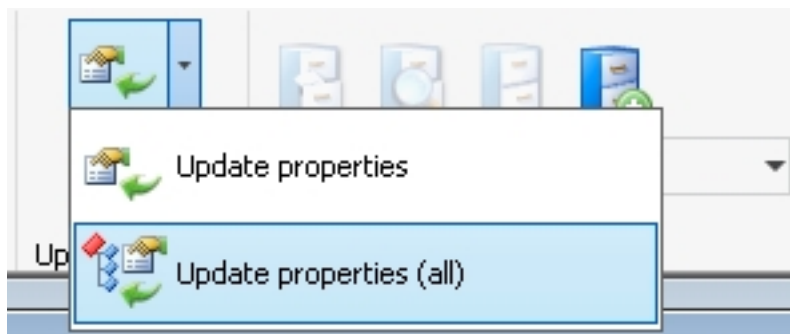
Exchange all replaces all occurrences of the part in the drawing with the one that was selected via the Combined search.

In the **HELiOS - Part** Ribbon tab you can find the  **Exchange dependent component** function in the **Input** function group. If an active part is a dependent component, it can be exchanged with this function, taking the dependency into account.

Furthermore, you can use these functions for exchanging of base parts of derived parts or assemblies.

Update properties (all)

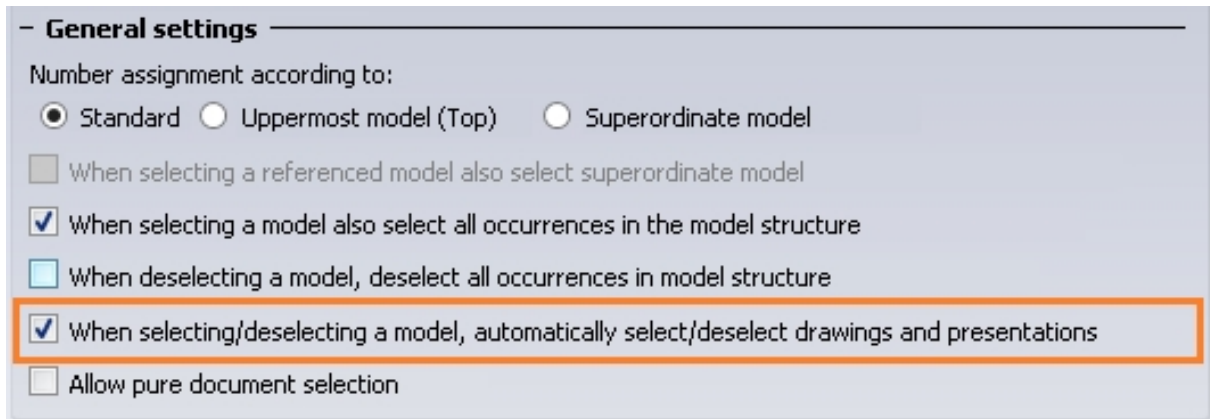
The **Update** function group of the **HELiOS** and the **HELiOS - Active part** Ribbon tab now offers the new **Update properties (all)**  function.



This function updates the properties of the model as well as the displayed names of all direct sub-parts.

Select/deselect drawings and presentations

When transferring the CAD model structure to the HELiOS Datenbank with the New in HELiOS function, and also when deriving model structures, you can find the new option **When selecting/deselecting a model, automatically select/deselect drawings and presentations** in the dialogue window.



- General settings

Number assignment according to:

Standard Uppermost model (Top) Superordinate model

When selecting a referenced model also select superordinate model

When selecting a model also select all occurrences in the model structure

When deselecting a model, deselect all occurrences in model structure

When selecting/deselecting a model, automatically select/deselect drawings and presentations

Allow pure document selection

This option allows you to determine with one mouse click whether drawings and/or presentations which are linked to a model are to be selected or deselected together with the model. Default: Checkbox active.

Expanded HELiOS Options

In the HELiOS Options dialogue window you can influence the loading behaviour (updating of attributes) of components which have already been opened in the context of other documents. If never versions of components of a document exist on the Server (this concerns both (file) changes of the corresponding components and the indexing by HELiOS), these can be updated to the new state when opening them in their local CAD environment or choosing **Data > Apply server state**.

Since an automatic check on updatings upon opening of sub-assemblies from an already opened assemblies can be very time consuming, and since you might still prefer continuing your work with the state that applied to the superordinate assembly when it was opened, you can use the **Update components** option, with which the automatic updating can be activated or deactivated.

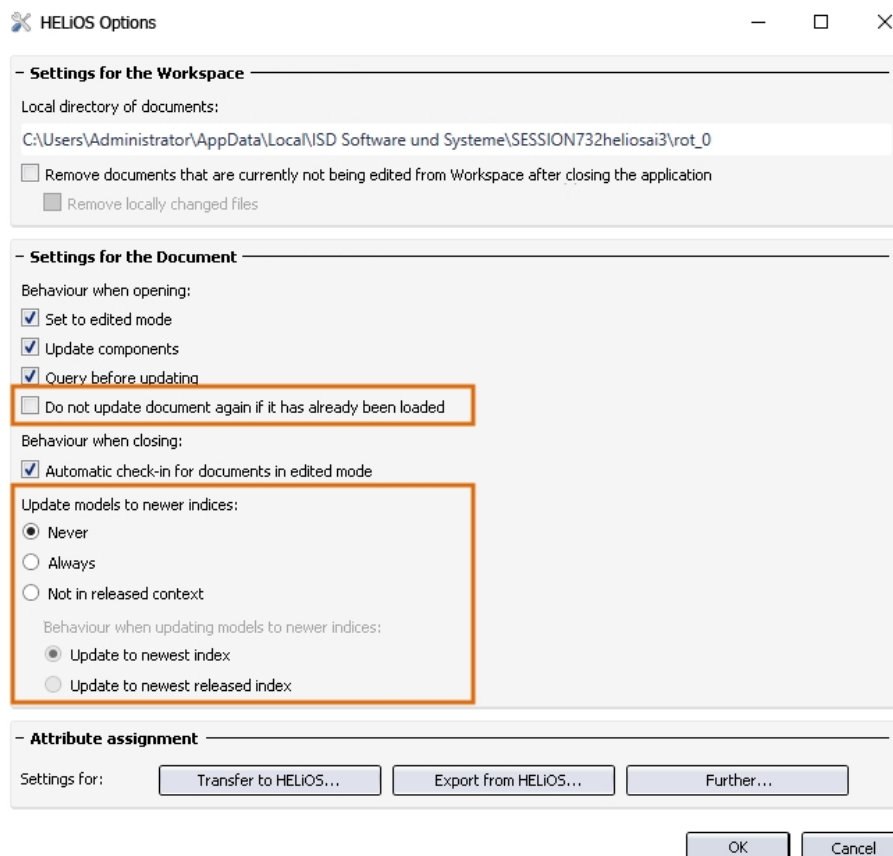
An additional query for confirmation of the update can be activated or deactivated.

The updating takes place from top to bottom, i.e. sub-components with a newer index will even be updated (with or without query) even if the superordinate document was replaced with a newer server state.

Also, the dialogue provides new options for the definition of the update behaviour of assemblies when there are newer indices from sub-components.

These options allow you to decide in which cases an update to newer indices is to be carried out, and whether an update to the newest or the newest released index is to be performed.

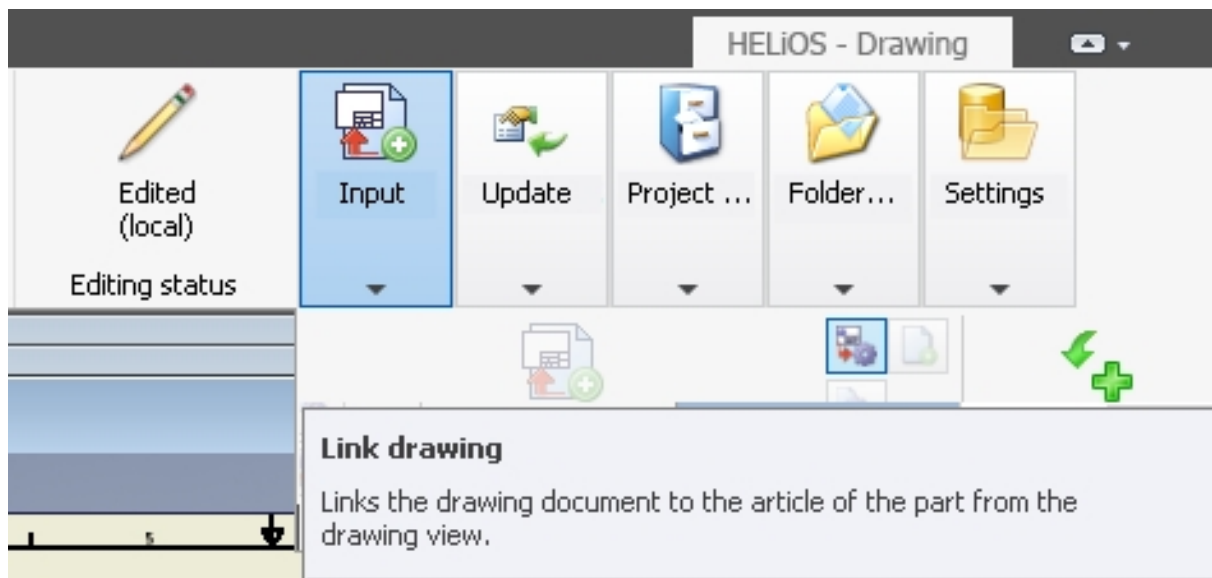
The update option takes effect upon loading and when choosing **Apply server state**.



Linked drawings

HELiOS 2019 comes with improved behaviour of linked documents and drawings.

For instance, if a linked document cannot be clearly assigned to an opened drawing, a selection dialogue will be displayed.



Support of bolt and stud connections

Bolt and stud connections can now be managed with HELiOS.

The standard parts are made available in the HELiOS Workspace and will be exchanged in bolted connections upon saving or initial takeover via the **New in HELiOS** function.

A subsequent change of the connections is also possible.

HELIOS for SOLIDWORKS

Note: SOLIDWORKS interface only available as of HELIOS 2020 (Version 2500)

Due to a fundamental revision of the SOLIDWORKS interface with regard to functionality and performance, as well as a complete standardization of all HELIOS masks, an update of the SOLIDWORKS interface will not be available until HELIOS 2020 (Version 2500).

Navisworks Interface

Service Pack 2 (V 2402)

Model structure: Display of product structure

If only a document structure instead of a model structure is available for a document, the HELiOS-Navisworks interface displays the document structure, according to the document master data, on the **Model structure** tab.

Document	O	O	In	In	W	Designation
DN-002744			a			total.dwg
DN-002745			b			2 circles.dwg
DN-002746			b			circle.dwg
DN-002747			b			rectangle.dwg
DN-002748			b			circle and rectangle.dwg
DN-002745			b			2 circles.dwg
DN-002746			b			circle.dwg
DN-002747			b			rectangle.dwg
DN-002746			b			circle.dwg
DN-002747			b			rectangle.dwg

Service Pack 1 2019 (V 2401)

Support of von Navisworks 2020

HELiOS 2019 Service Pack 1 offers an interface to Navisworks Version 2020.

HELiOS & EPLAN

Service Pack 1 2019 (V 2401)

Support of EPLAN 2.8

HELiOS 2019 SP1 supports the current EPLAN Version 2.8.

Internet Server

Major Release (V 2400)

New HELiOS Internet Server

As of HELiOS Version 2401 (Service Pack 01) a new **HELiOS Internet Server** will be available, replacing the old version.

The new HELiOS 2019 Major Release will still come with the HIS that you already know.

If you want to use the new **HELiOS Internet Server** now, or still work with the old one and just want to test the new one, we will happy to assist you with the installation.

For the update to the new HIS you will need help from ISD Consulting, since an automatic migration of your specific adjustments from the old to the new HIS will not be possible.

Rechtliche Hinweise:

© 2019 ISD @ Software und Systeme GmbH alle Rechte vorbehalten

Dieses Handbuch sowie die darin beschriebene Software werden unter Lizenz zur Verfügung gestellt und dürfen nur in Übereinstimmung mit den Lizenzbedingungen verwendet oder kopiert werden. Der Inhalt dieses Handbuches dient ausschließlich zur Information, kann ohne Vorankündigung verändert werden und ist nicht als Verpflichtung von ISD Software und Systeme GmbH anzusehen. Die ISD Software und Systeme GmbH gibt keine Gewähr oder Garantie hinsichtlich der Richtigkeit oder Genauigkeit der Angaben in dieser Dokumentation. Kein Teil dieser Dokumentation darf, außer durch das Lizenzabkommen ausdrücklich erlaubt, ohne vorherige, schriftliche Genehmigung von ISD Software und Systeme GmbH reproduziert, in Datenbanken gespeichert oder in irgendeiner Form übertragen werden.

Alle erwähnten Produkte sind Warenzeichen oder eingetragene Warenzeichen ihrer jeweiligen Hersteller.

Legal notes

© 2019 ISD @ Software und Systeme GmbH. All rights reserved.

This User Guide and the software described herein are provided in conjunction with a license and may only be used or copied in accordance with the terms of the license. The contents of this User Guide solely serve the purpose of information; it may be modified without prior notice and may not be regarded as binding for the ISD Software und Systeme GmbH. The ISD Software und Systeme GmbH does not assume any responsibility for the correctness or accuracy of the information provided in this document. No part of this document may be reproduced, saved to databases or transferred in any other form without prior written permission by the ISD Software und Systeme GmbH, unless expressly allowed by virtue of the license agreement.

All mentioned products are trademarks or registered trademarks of their respective manufacturers and producers.



ISD Software und Systeme GmbH

Hauert 4
44227 Dortmund
Germany
Tel. +49 (0)231 9793-0
Fax +49 (0)231 9793-101
info@isdgroup.de

ISD Berlin

Paradiesstraße 208a
12526 Berlin
Germany
Tel. +49 (0)30 634178-0
Fax +49 (0)30 634178-10
berlin@isdgroup.de

ISD Austria GmbH

Hafenstraße 47-51
4020 Linz
Austria
Tel. +43 (0)732 21 04 22-0
Fax +43 (0)732 21 04 22-29
info@isdgroup.at

ISD Hamburg

Strawinskystraße 2
25337 Elmshorn
Germany
Tel. +49 (0)4121 740980
Fax +49 (0)4121 4613261
hamburg@isdgroup.de

ISD Benelux b.v.

Het Zuiderkruis 33
5215 MV 's-Hertogenbosch
The Netherlands
Tel. +31 (0)73 6153-888
Fax +31 (0)73 6153-899
info@isdgroup.nl

ISD Hannover

Hamburger Allee 24
30161 Hanover
Germany
Tel. +49 (0)511 616803-40
Fax +49 (0)511 616803-41
hannover@isdgroup.de

ISD Benelux b.v.

Grote Voort 293A
8041 BL Zwolle
The Netherlands
Tel. +31 (0)73 6153-888
Fax +31 (0)73 6153-899
info@isdgroup.nl

ISD Nürnberg

Nordostpark 7
90411 Nuremberg
Germany
Tel. +49 (0)911 95173-0
Fax +49 (0)911 95173-10
nuernberg@isdgroup.de

ISD Schweiz AG

Rosenweg 2
4500 Solothurn
Switzerland
Tel. +41 (0)32 624 13-40
Fax +41 (0)32 624 13-42
info@isdgroup.ch

ISD Ulm

Wilhelmstraße 25
89073 Ulm
Germany
Tel. +49 (0)731 96855-0
Fax +49 (0)731 96855-10
ulm@isdgroup.de

www.isdgroup.com