



# HELiOS

UNLIMITED PLM PERFORMANCE DEVELOPED BY ISD

## HELiOS - What's new?

Version 2017

News Overview

Date of issue: 17/10/2017

[isdgroup.com](http://isdgroup.com)



THE WORLD OF CAD AND PDM SOLUTIONS



# TOC

<b>HELiOS Desktop</b> .....	<b>7</b>
<b>Service Pack 2 (V 2202)</b> .....	<b>7</b>
Displaying of attributes of linked objects in masks and result lists .....	7
Result list button for opening of documents .....	8
Revised Serial document input dialogue window .....	9
Expanded HELiOS-URLs .....	10
HELiOS Options: Avoid unwanted printing of notes documents .....	11
<b>Service Pack 1 (V 2201)</b> .....	<b>12</b>
Use of articles: Filter options and increased performance .....	12
Favourites: Displayed index .....	13
Generate item numbers .....	13
Restore notes documents .....	14
<b>Major Release 2017 (V 2200)</b> .....	<b>15</b>
Print documents .....	15
Print result lists .....	17
New Folder and Project selection dialogues .....	18
Indication of new indices in structure versions .....	19
Result list configuration .....	19
Result list options .....	19
Export and Import of settings .....	22
Display of notes documents in result lists .....	23
New option for linked articles on 'Display' tab .....	24
Notes on license configuration of ERP interfaces .....	24
<b>HELiOS Spooler</b> .....	<b>25</b>
<b>Service Pack 2 (V 2202)</b> .....	<b>25</b>
Support of multiple identical printer drivers .....	25
Conversions for SOLIDWORKS, AutoCAD and Inventor .....	25
<b>Service Pack 1 (V 2201)</b> .....	<b>26</b>
HELiOS Spooler Admin Tool: Job statuses .....	26
NCW export .....	26
HELiOS PrintClient: New options .....	27
<b>Major Release 2017 (V 2200)</b> .....	<b>28</b>
Server settings .....	28
Other export formats .....	28
<b>HELiOS Vault Server</b> .....	<b>29</b>
<b>Service Pack 1 (V.2201)</b> .....	<b>29</b>
Enhanced replication options with VSKonfig.exe .....	29
<b>HELiOS MS Office Interface</b> .....	<b>30</b>
<b>Major Release 2017 (V 2200)</b> .....	<b>30</b>

Edit Documents .....	30
Support of external references in Excel .....	30
<b>HELiOS CAD/CAE Integrations .....</b>	<b>31</b>
<b>Service Pack 2 (V 2202) .....</b>	<b>31</b>
Workspace Manager: Admin tool for Session Management .....	31
Performance increase and enhancements in various areas .....	32
<b>Service Pack 1 (V 2201) .....</b>	<b>35</b>
Improved user-friendliness .....	35
<b>Major Release 2017 (V 2200) .....</b>	<b>36</b>
Significantly enhanced performance of HELiOS Add-ins .....	36
Deriving via model structure with multiple linked drawings .....	36
Manual registration of MultiCAD-Add-ins with HeliosCouplings.exe .....	36
<b>HELiOS in HiCAD .....</b>	<b>37</b>
<b>Service Pack 2 (V 2202) .....</b>	<b>37</b>
Loading of HiCAD drawings from HELiOS dialogue windows .....	37
<b>Service Pack 1 2017 (V 2201) .....</b>	<b>38</b>
NCW export .....	38
<b>Major Release 2017 (V 2200) .....</b>	<b>39</b>
Marking of newer indices in the product structure .....	39
Load with index selection .....	40
Performance .....	41
New data format - Conversion required for updates .....	42
<b>HELiOS for AutoCAD .....</b>	<b>43</b>
<b>Service Pack 2 (V 2202) .....</b>	<b>43</b>
External references: Configure display of document names .....	43
Switch user .....	43
Show/Hide workspace .....	44
<b>Service Pack 1 (V 2201) .....</b>	<b>45</b>
AutoCAD 2018 .....	45
Flexible handling of editing statuses of documents .....	45
<b>Major Release 2017 (V 2200) .....</b>	<b>46</b>
New Ribbon menu and HELiOS Workspace .....	46
<b>HELiOS for Autodesk Inventor .....</b>	<b>48</b>
<b>Service Pack 2 (V 2202) .....</b>	<b>48</b>
Support of Inventor Presentation files (IPNs) .....	48
Create indices for parts and assemblies .....	48
Hide/show workspace .....	50
New in HELiOS: Linked drawings .....	50
Placing of multiple parts in Inventor .....	50
<b>Service Pack 1 (V 2201) .....</b>	<b>52</b>

Deriving of model structure via CAD structure .....	52
Inventor 2018.....	53
Insert external references.....	53
Further optimisations and enhancements of the UI.....	53
Support of DWG drawing format.....	53
<b>Major Release 2017 (V 2200)</b> .....	<b>54</b>
Performance and user-friendliness.....	54
<b>HELiOS for SOLIDWORKS</b> .....	<b>55</b>
<b>Service Pack 2 (V 2202)</b> .....	<b>55</b>
SOLIDWORKS 2018.....	55
Create indices for Parts and Assemblies.....	55
Deriving of model structure via CAD structure.....	55
Hide/show workspace.....	56
<b>Major Release 2017 (V 2200)</b> .....	<b>57</b>
SOLIDWORKS 2017.....	57
HELiOS Workspace.....	57
<b>HELiOS &amp; EPLAN</b> .....	<b>58</b>
<b>Service Pack 2 (V 2202)</b> .....	<b>58</b>
Support of EPLAN 2.7.....	58
<b>Major Release 2017 (V 2200)</b> .....	<b>59</b>
Support of EPLAN 2.5 and 2.6.....	59
HELiOS preview for EPLAN projects and PDF files.....	59



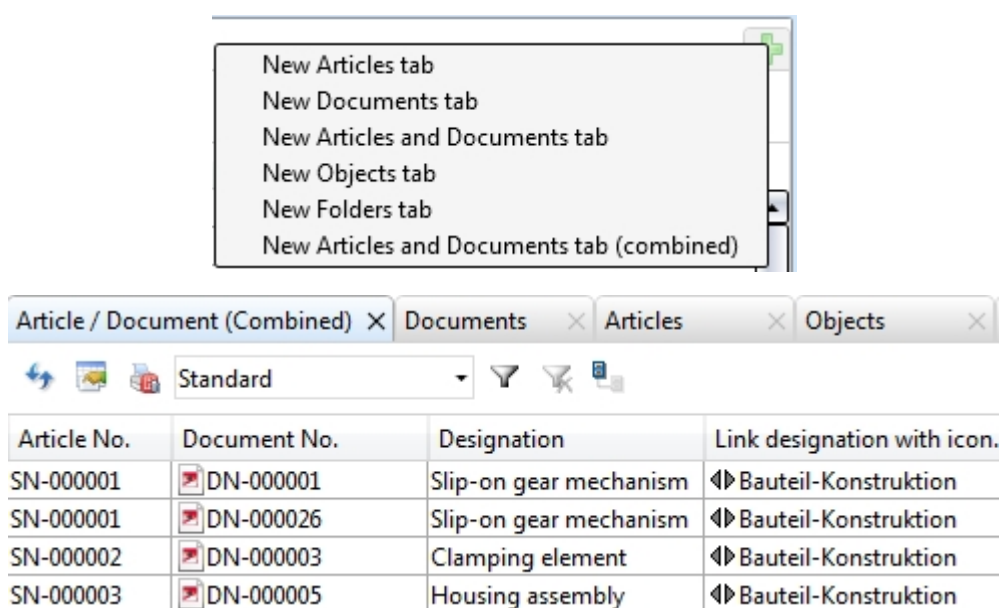
# HELIOS Desktop

## Service Pack 2 (V 2202)

### Displaying of attributes of linked objects in masks and result lists

Various enhancements of the HELIOS Desktop allow an easy displaying of attributes of linked objects in masks or result lists.

The **New Articles and Documents tab (combined)** result list can be added to the UI in the Project or Folder Explorer and contains an overview of the attributes of linked articles and documents in one row.



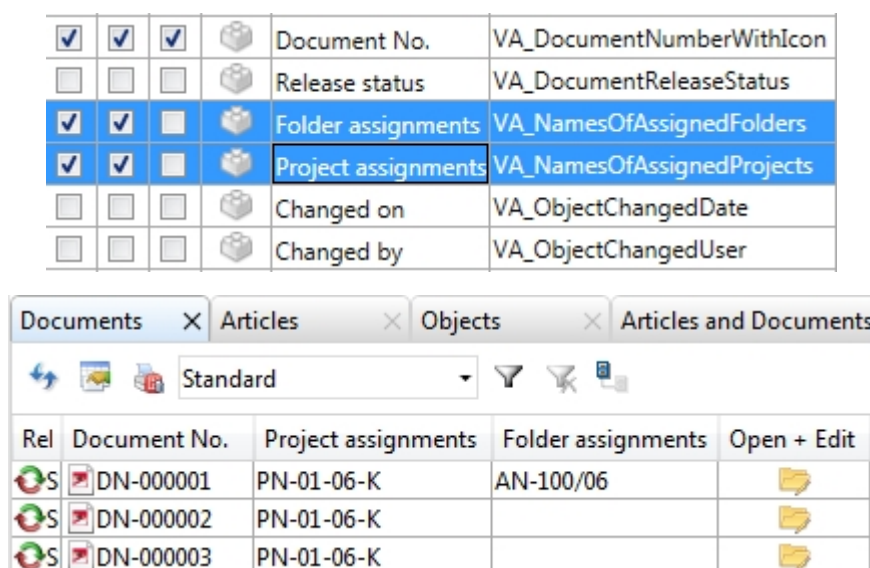
The screenshot shows a context menu with the following options:

- New Articles tab
- New Documents tab
- New Articles and Documents tab**
- New Objects tab
- New Folders tab
- New Articles and Documents tab (combined)

Below the menu is a window titled 'Article / Document (Combined)'. It features a toolbar with a 'Standard' dropdown menu and several icons. The main content is a table with the following data:

Article No.	Document No.	Designation	Link designation with icon.
SN-000001	DN-000001	Slip-on gear mechanism	◄► Bauteil-Konstruktion
SN-000001	DN-000026	Slip-on gear mechanism	◄► Bauteil-Konstruktion
SN-000002	DN-000003	Clamping element	◄► Bauteil-Konstruktion
SN-000003	DN-000005	Housing assembly	◄► Bauteil-Konstruktion

Two new virtual attributes of the result list configuration show the project and folder assignments of objects in article or document result lists.



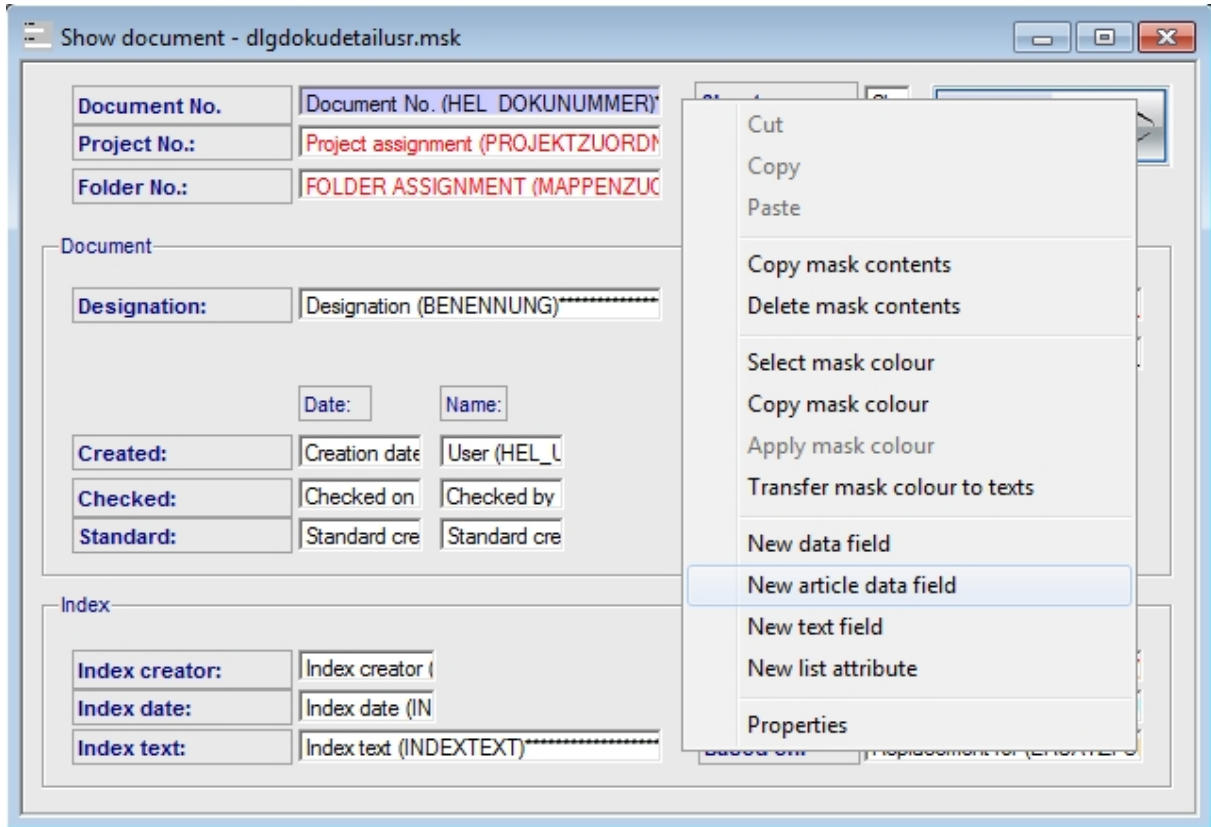
The screenshot shows a configuration table for virtual attributes with the following data:

<input type="checkbox"/>	<input type="checkbox"/>	<input type="checkbox"/>	<input type="checkbox"/>	Attribute Name	Virtual Attribute Name
<input checked="" type="checkbox"/>	<input checked="" type="checkbox"/>	<input checked="" type="checkbox"/>	<input type="checkbox"/>	Document No.	VA_DocumentNumberWithIcon
<input type="checkbox"/>	<input type="checkbox"/>	<input type="checkbox"/>	<input type="checkbox"/>	Release status	VA_DocumentReleaseStatus
<input checked="" type="checkbox"/>	<input checked="" type="checkbox"/>	<input type="checkbox"/>	<input type="checkbox"/>	Folder assignments	VA_NamesOfAssignedFolders
<input checked="" type="checkbox"/>	<input checked="" type="checkbox"/>	<input type="checkbox"/>	<input type="checkbox"/>	Project assignments	VA_NamesOfAssignedProjects
<input type="checkbox"/>	<input type="checkbox"/>	<input type="checkbox"/>	<input type="checkbox"/>	Changed on	VA_ObjectChangedDate
<input type="checkbox"/>	<input type="checkbox"/>	<input type="checkbox"/>	<input type="checkbox"/>	Changed by	VA_ObjectChangedUser

Below the configuration table is a window titled 'Documents'. It features a toolbar with a 'Standard' dropdown menu and several icons. The main content is a table with the following data:

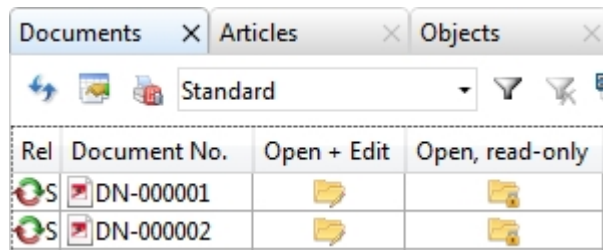
Rel	Document No.	Project assignments	Folder assignments	Open + Edit
	DN-000001	PN-01-06-K	AN-100/06	
	DN-000002	PN-01-06-K		
	DN-000003	PN-01-06-K		

The Mask Editor now offers the option to create article data fields in document masks and document data fields in article masks, in order to show attributes of linked objects in (detail) masks. This can be done with the context menu function **New article data field** (for document masks) or **New document data field** (for article masks), respectively.



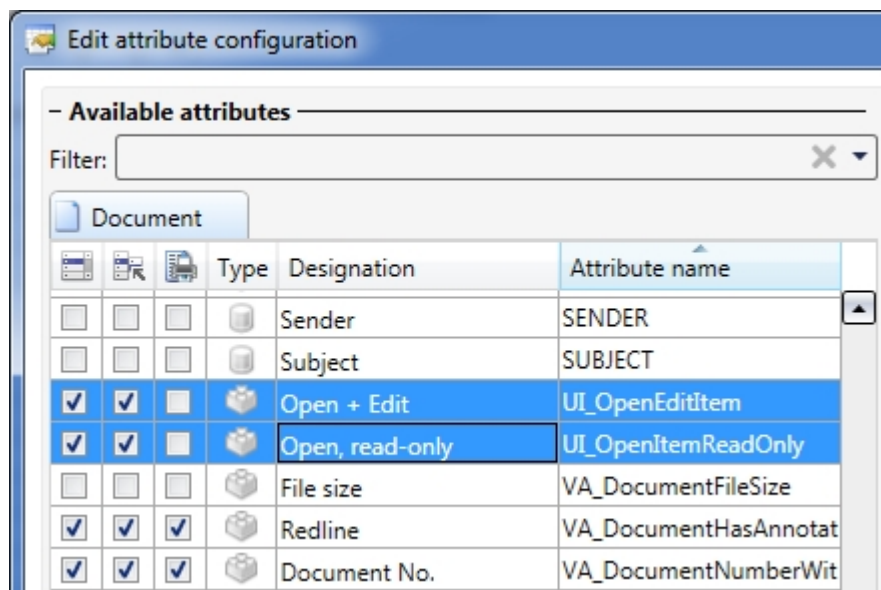
### Result list button for opening of documents

To speed up access to documents, HELiOS now offers the option to assign document result lists of the Project Explorer or Folder Explorer context to buttons which allow an opening of documents with one click - either for editing or in read-only mode - in the linked application.



For this purpose, the two attributes **UI\_OpenEditItem** and **UI\_OpenItemReadOnly** have been created, which simply need to be activated in the result list configuration.



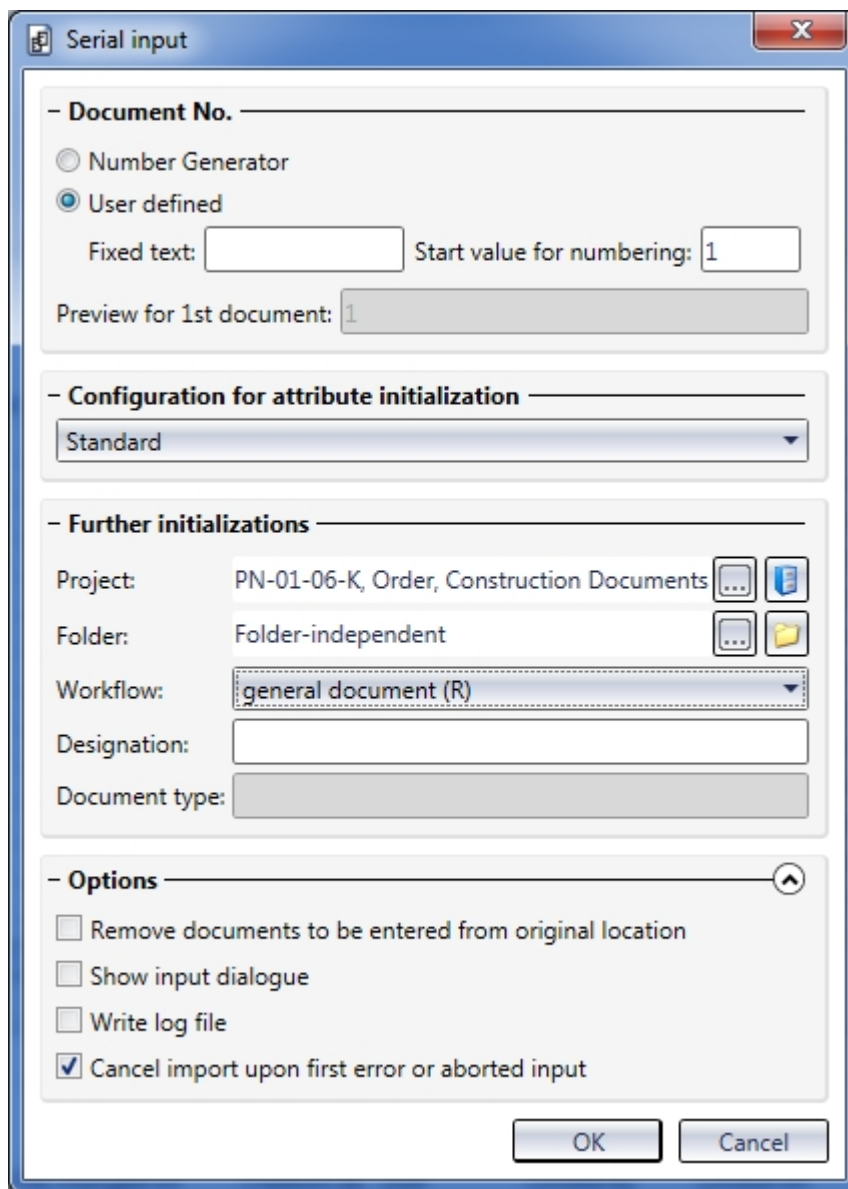


## Revised Serial document input dialogue window

The Serial input function for documents has been redesigned and expanded.

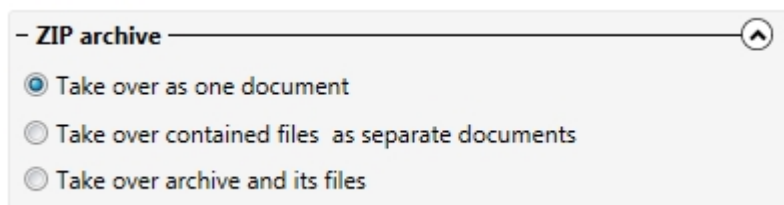
Besides project selection you can now also assign folders and workflows directly via the settings of the dialogue windows.

You can specify via checkboxes whether imported source files are to be preserved or deleted in their original location. You can also specify whether the document data input mask is to be called for each individual file, or whether the serial input is to be done automatically without the mask.



The **Configuration for attribute initialization** can be expanded by the user, allowing him/her to select various configurations from the pull-down menu. In this way, recurring initialization patterns can be assigned with a few mouse clicks, avoiding manual definitions.

If ZIP files are to be added to HELiOS via serial document input, the input dialogue will provide an additional section for this purpose:



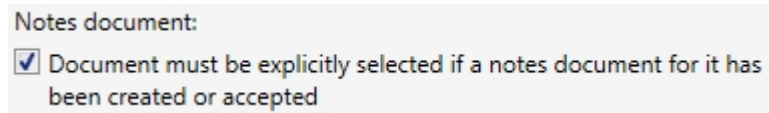
### Expanded HELiOS-URLs

When using the HELiOS URL for object types, folders, user-defined types (materials, customers) and pipe classes are now also supported.

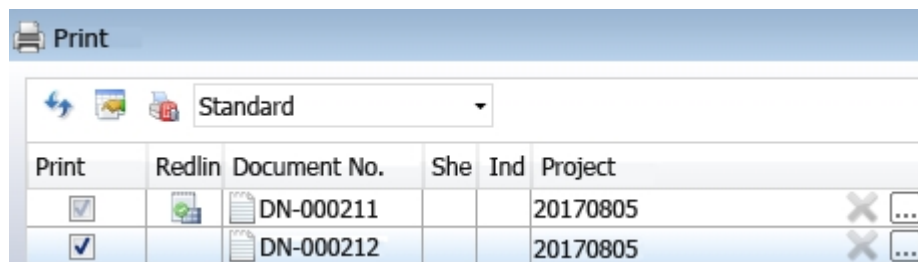
## HELiOS Options: Avoid unwanted printing of notes documents

In some cases you may not want documents with created or accepted notes documents to be printed.

For such cases a new option has been added on the Print tab of the HELiOS Options dialogue window:



The corresponding documents in the Print dialogue will be marked as such, are excluded from printing, and will only be printed after their explicit selection.



## Service Pack 1 (V 2201)

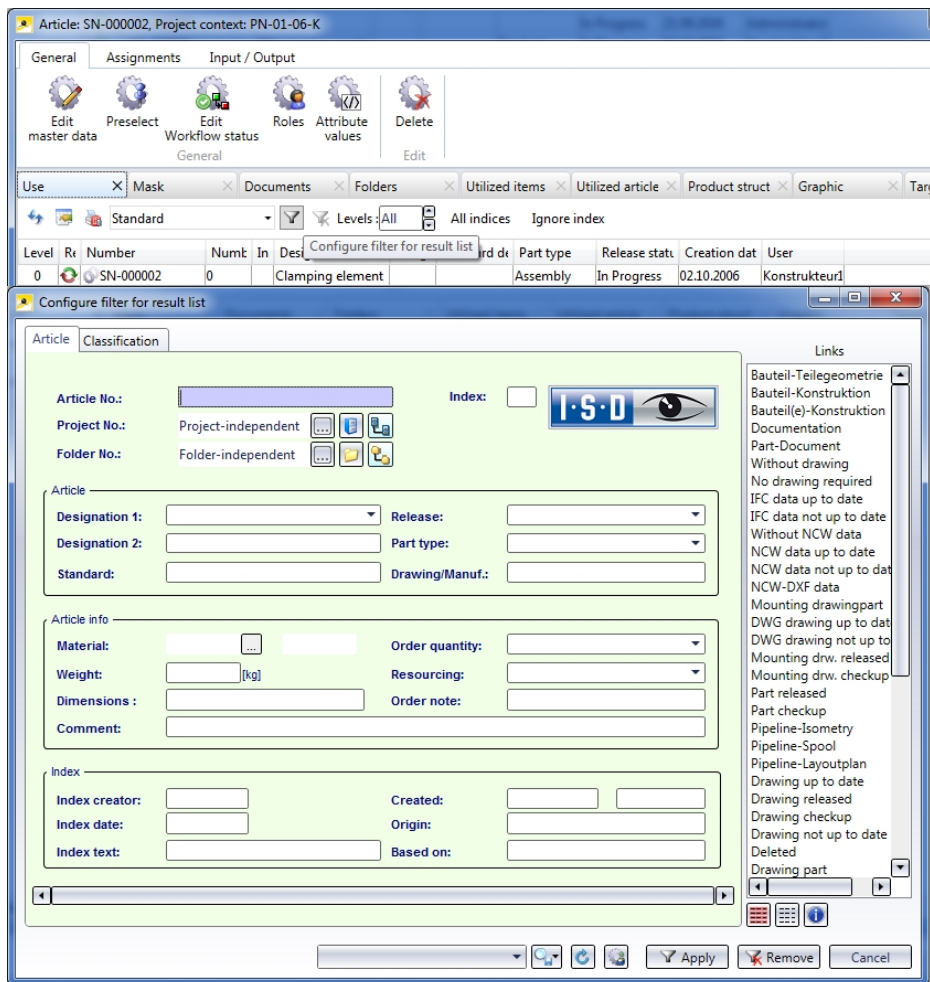
### Use of articles: Filter options and increased performance

The result lists for the use of parts or assemblies (parts where-used lists) can now be further refined by means of user-defined filters.


This allows you, for instance, to save search templates that will show you in which currently released assemblies a particular part with a particular index is directly or indirectly contained, or in which pre-mounted facade parts a particular sealing element has been used throughout different projects.

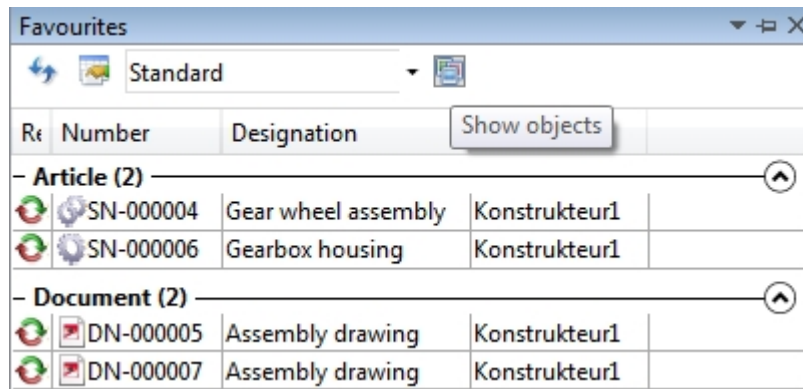
As is the case with the combined search, article classes and links can be considered. The latter is, for instance, relevant for a filtering for mechatronical items in mechanical engineering or electrical engineering BOMs, since mechanical engineering article are normally linked to a CAD document.

Also, a performance increase could be achieved here.

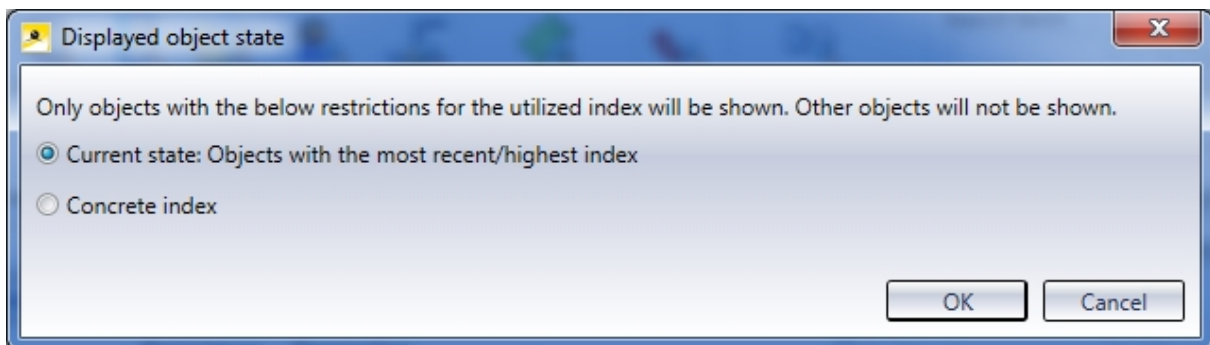


## Favourites: Displayed index

If you click on the  **Show objects** symbol in the **Favourites** window, the **Displayed object state** dialogue window will be displayed. Here you can choose whether the objects in the Favourites window are to be displayed with the index with which they had been added, or with their highest index (if any).

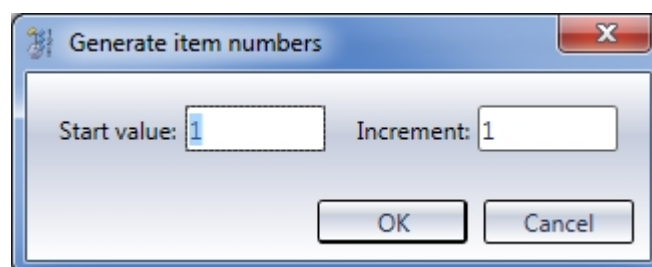


R#	Number	Designation	Show objects
- Article (2) -			
	SN-000004	Gear wheel assembly	Konstrukteur1
	SN-000006	Gearbox housing	Konstrukteur1
- Document (2) -			
	DN-000005	Assembly drawing	Konstrukteur1
	DN-000007	Assembly drawing	Konstrukteur1



## Generate item numbers

The **Generate item numbers** function in the context menu for items of the product structure allows you to create item numbers for multiple selections of objects, with the option to specify a start value and an increment for this value.

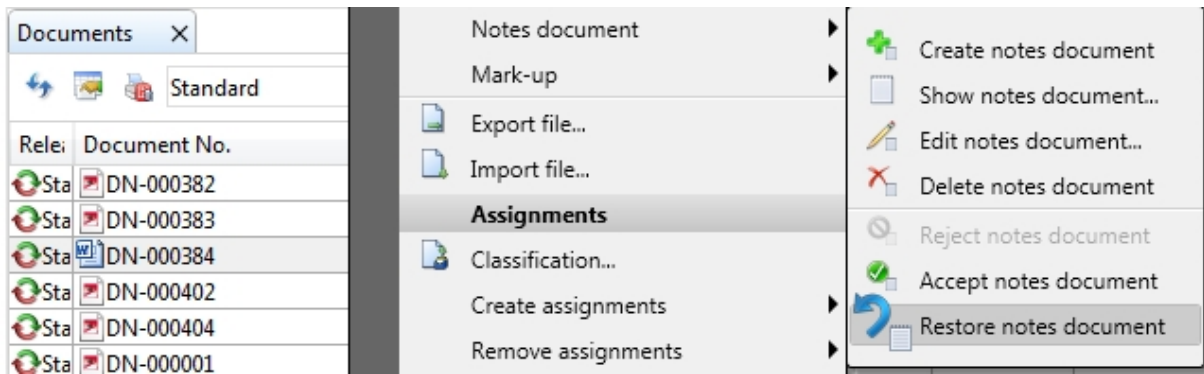


This procedure replaces the one used in connection with the "Product Editor" of older HELiOS versions.

## Restore notes documents

The range of functions for Notes documents has been expanded by the option to restore rejected notes documents again.

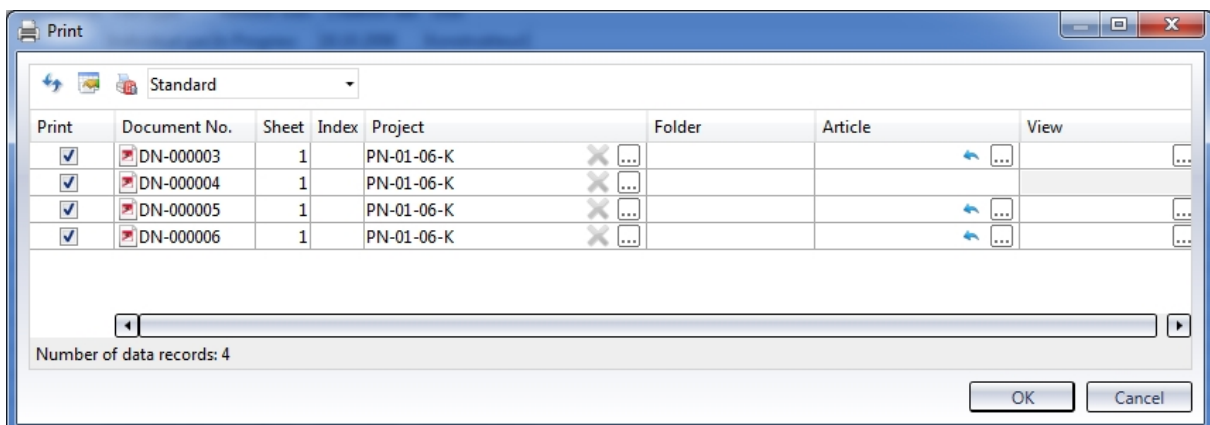
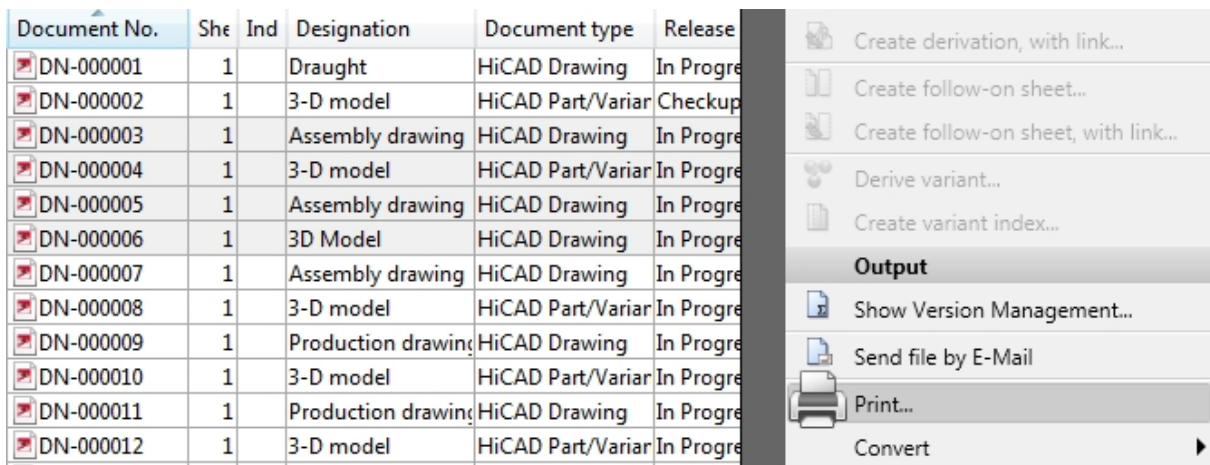
In this way, changes can be applied to the first rejected and then accepted notes document without having to create a new notes document to be accepted.



## Major Release 2017 (V 2200)

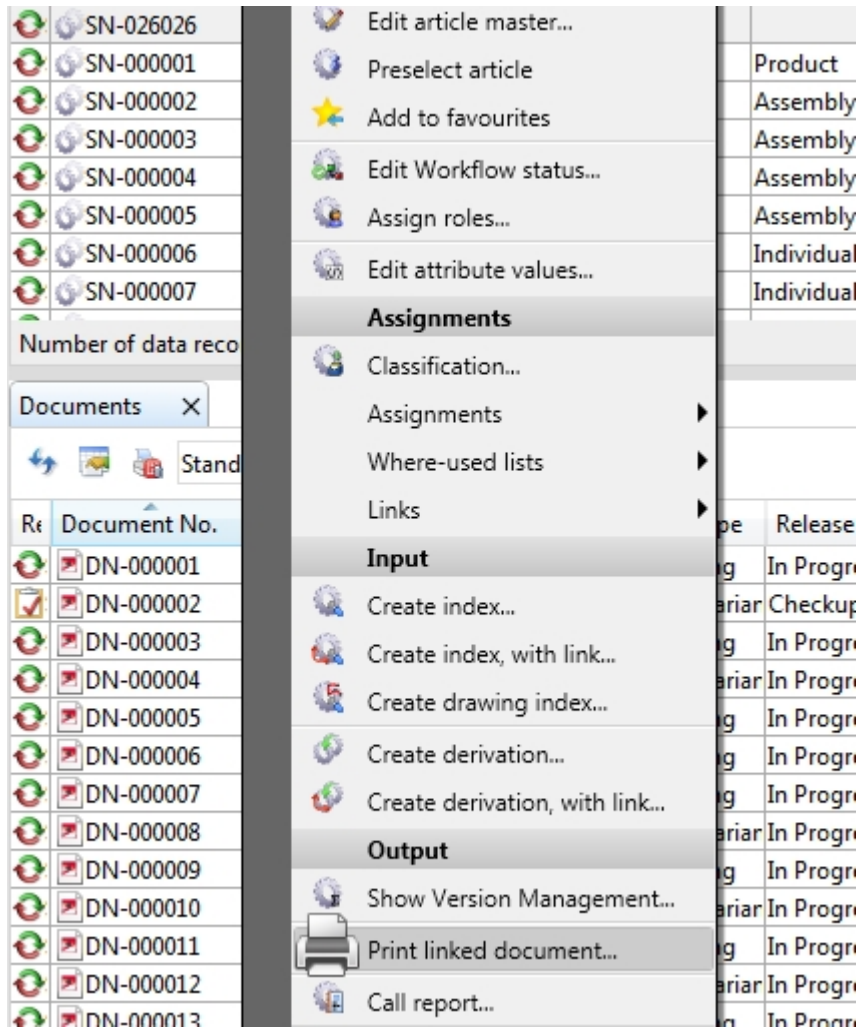
### Print documents

The new Print dialogue window for Documents enables you to send print jobs for Documents from (also multiple selections) from one central and configurable dialogue:



In the process you can specify which documents are to be printed and which context (Article, Folder, Project) is to be relevant for the filling in of the title block.

A multitude of individual steps that would otherwise be required for the printing process can thus be done in one go. For instance, you have the option to directly print documents that are linked to a selected article:



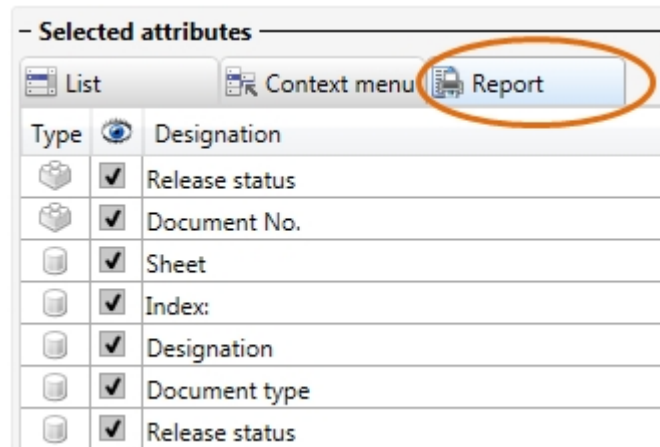
The exact behaviour of the dialogue depends on the settings specified on the **Print** tab of the HELIOS Options dialogue window.



## Print result lists

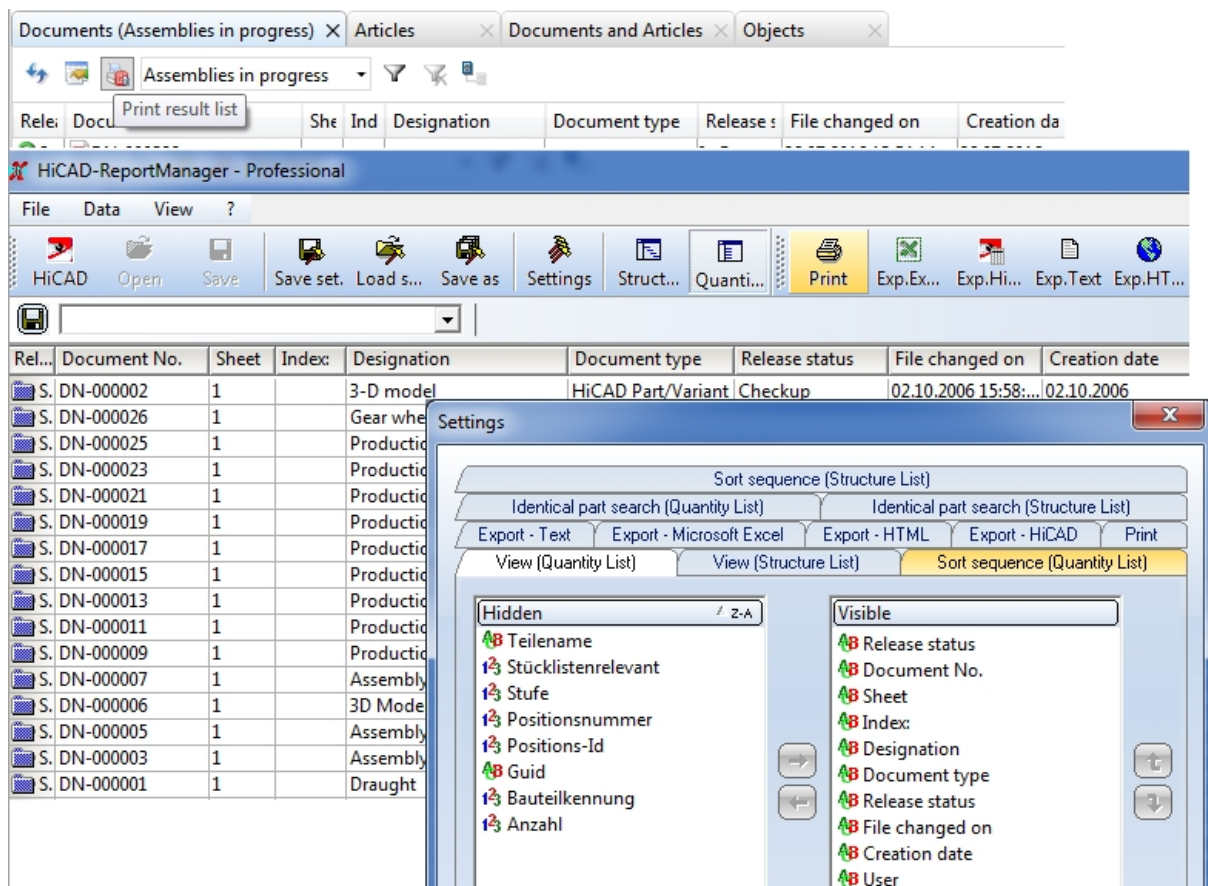
The function for the printing of result lists from the HELiOS Desktop via the Report Manager has been improved.

In the process, all attributes will be considered which have been assigned on the Report tab of the corresponding result list (configuration).



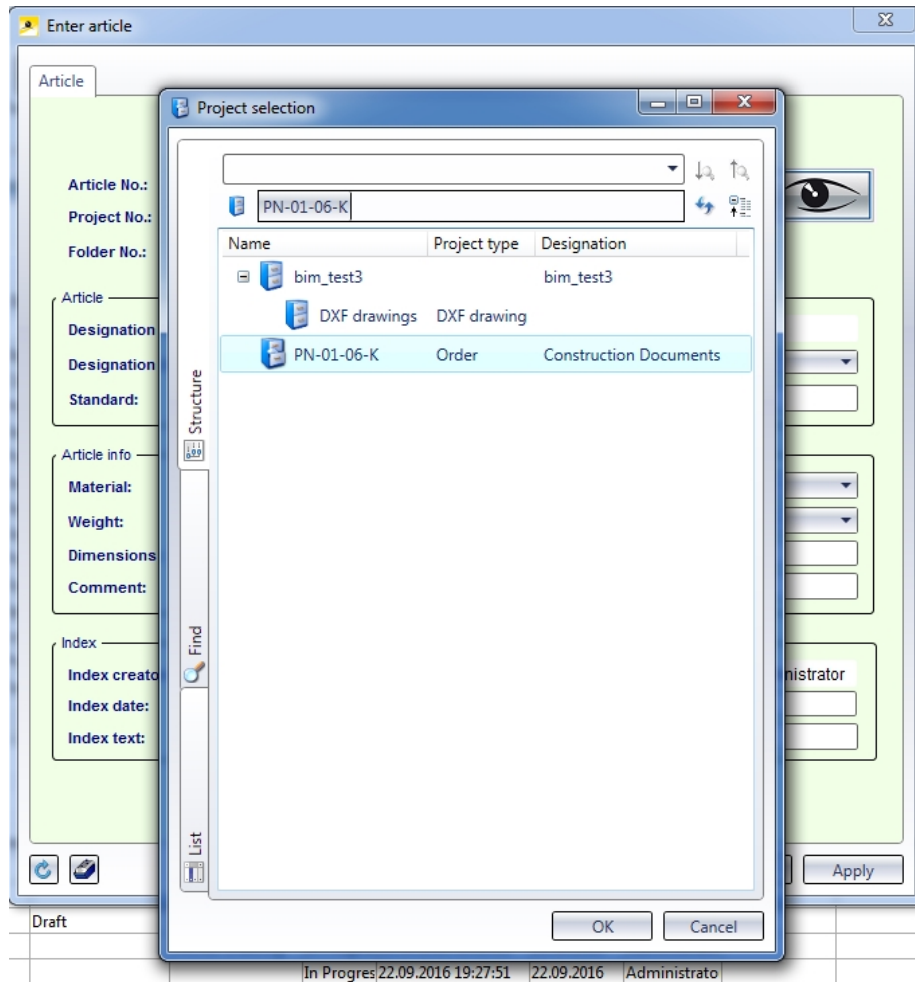
While attributes that are only shown in the result list of the are listed according to the print job, "hidden" attributes can be subsequently added in the Report Manager if desired.

In this way, "detours" via older template files can be avoided, which have therefore been removed from the system.



## New Folder and Project selection dialogues

On the left hand side of the Folder and Project selection window you can now find three new tabs that allow you to assign Articles or Documents to Projects or Folders, as well as the assigning of Projects or Folders within their corresponding Project or Folder structures.



The **Structure** tabs show the hierarchical structure of the Projects or Folders, as shown in the corresponding Explorer.

If you click on the **Find** tab, the already Project or Folder search mask will be displayed. Here you can enter specific search criteria and choose an object by double-clicking the corresponding entry in the result list.

The **List** tab shows an alphabetical list of all Projects or Folders (without any hierarchical dependencies).

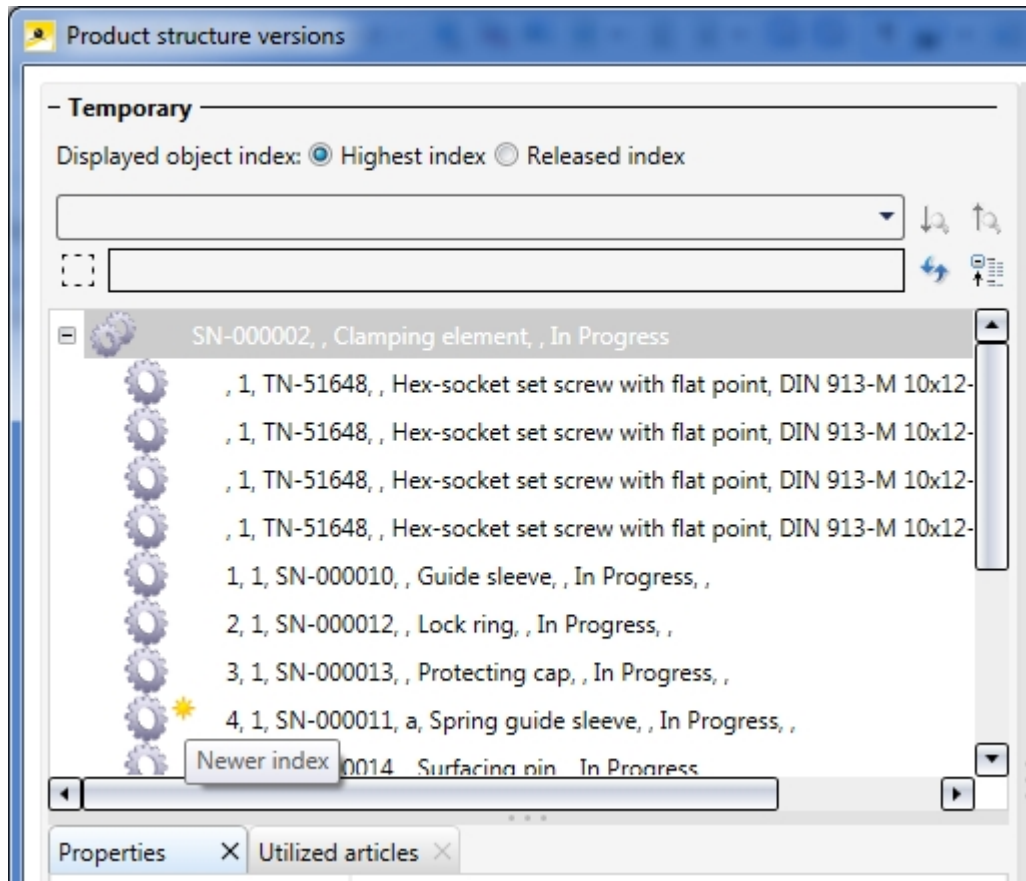


**Please note:**

This new feature replaces the setting options for the list form and structure of Projects and Folders on the Display tab of the HELiOS Options.

## Indication of new indices in structure versions

In the Product structure versions dialogue window, a yellow star symbol indicates whether there are indices for structure items at **Temporary / Highest Index** in the database that are newer than the ones that are shown in the currently displayed structure.



## Result list configuration

Besides the generally increased performance for result list configuration, some new options are now available:

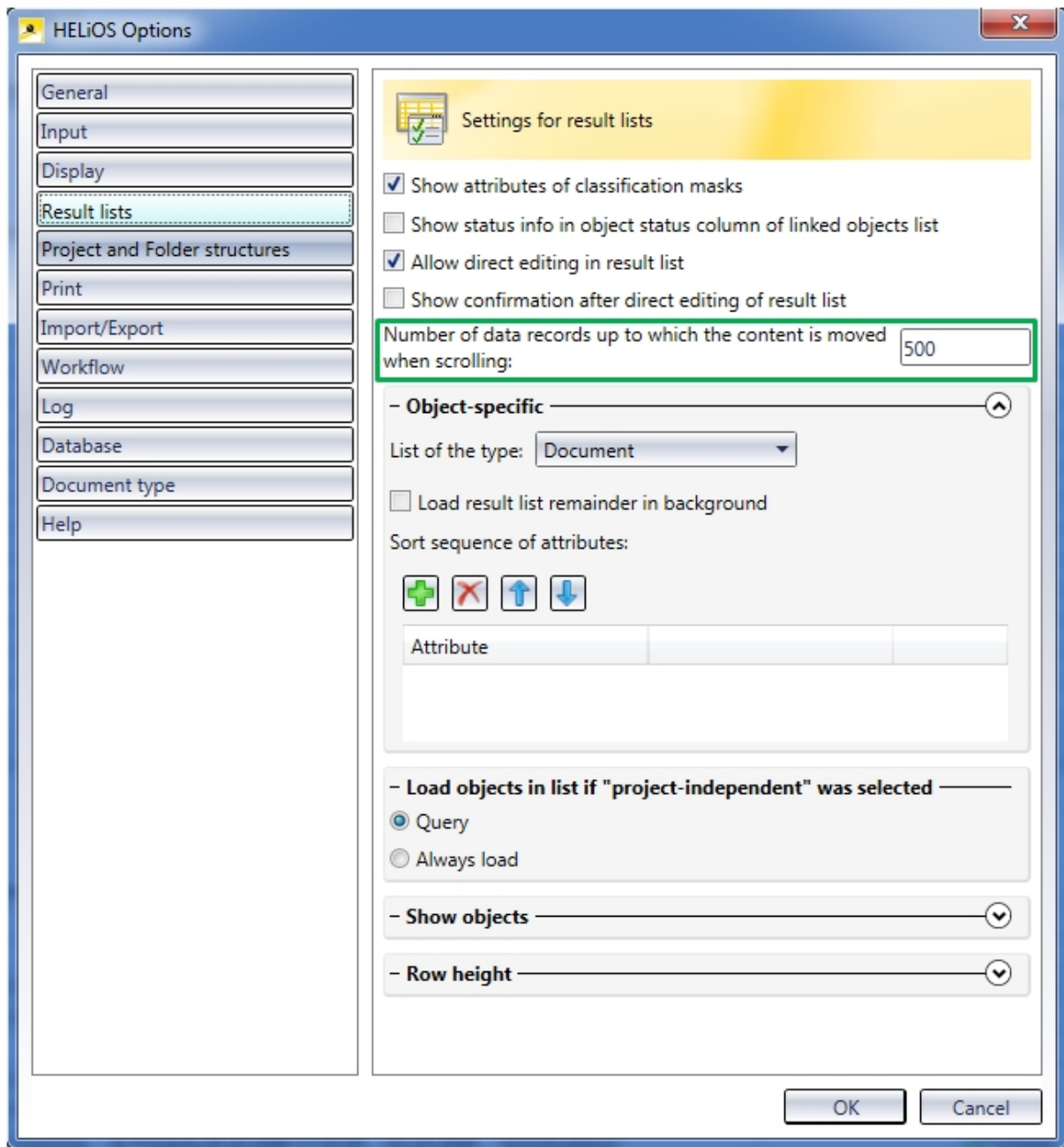
In the window for result list configuration ("Adjust result list...") you can now load all result list representations created by the user with one mouse click via the **Result list display** pull-down menu and configure them in the window. It is no longer necessary to take the intermediate step via "Manage..." .

You can use Drag & Drop to change the position of elements in result lists. When dragging columns, HiCAD will automatically scroll horizontally in the process.

Also, you can specify whether the attributes are to appear in centred, right aligned or left aligned position in the cell of their result list row.

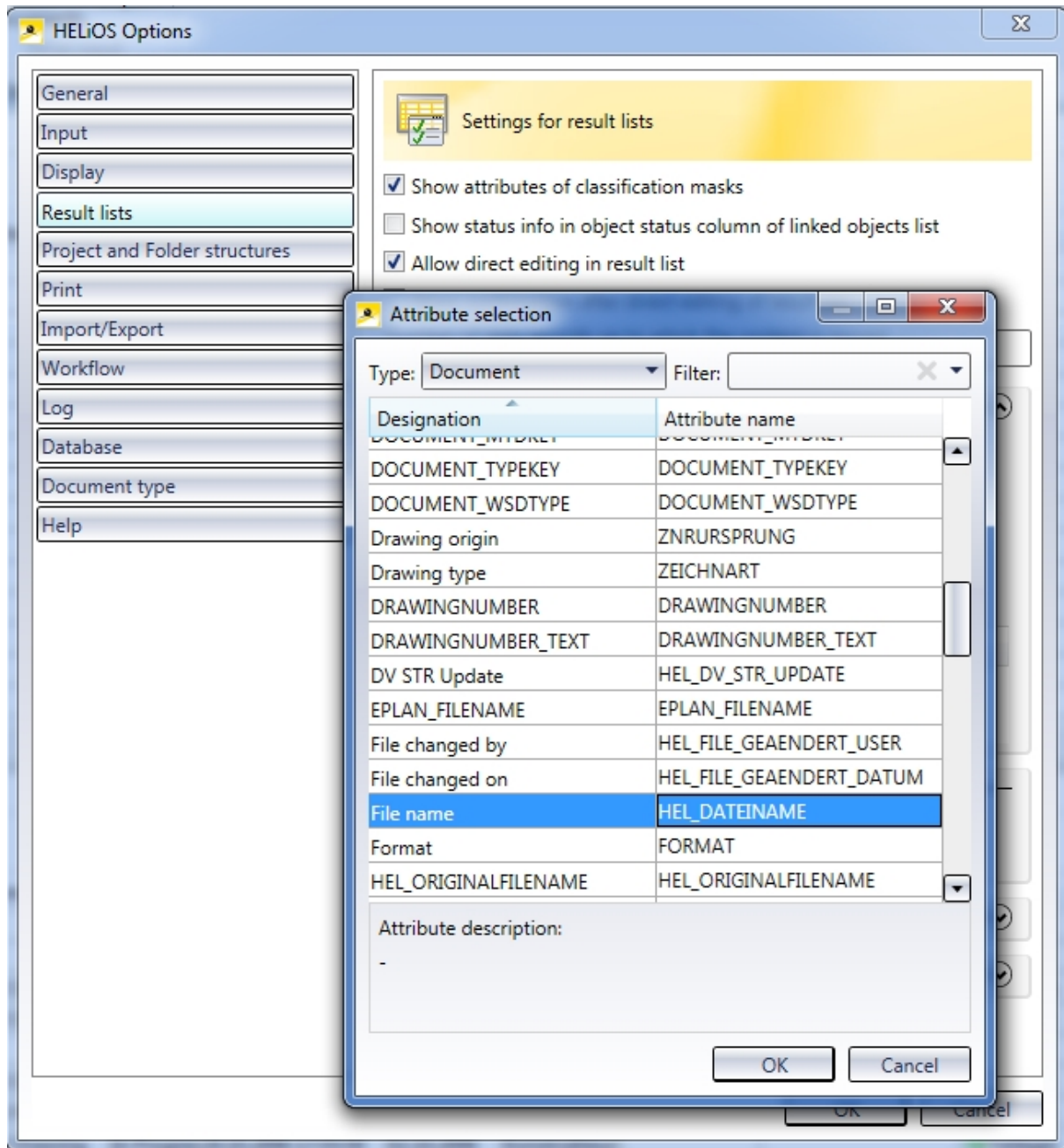
## Result list options

The new input field **Number of data records up to which the content is moved when scrolling** on the Result list tab of the HELiOS Options dialogue window allows you to specify how many result list entries are to be moved during scrolling. If the limit is reached, new displayed result list rows will be called in a "frozen" state.



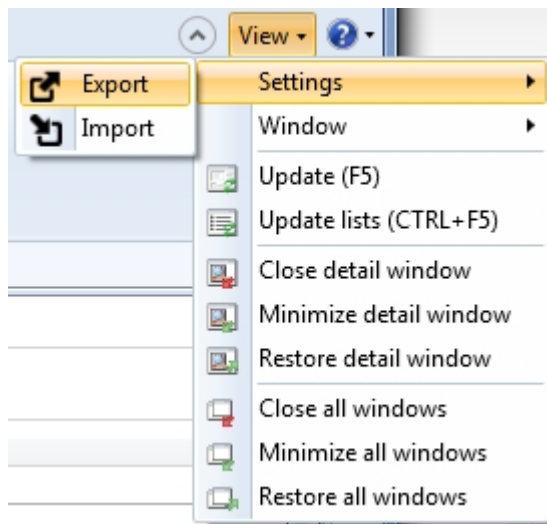
This setting options makes sense as a "fluent" scrolling can be very performance-intensive in very long result lists.

Also, the **Attribute selection** dialogue window for the specification of sort sequences in result lists has been revised.

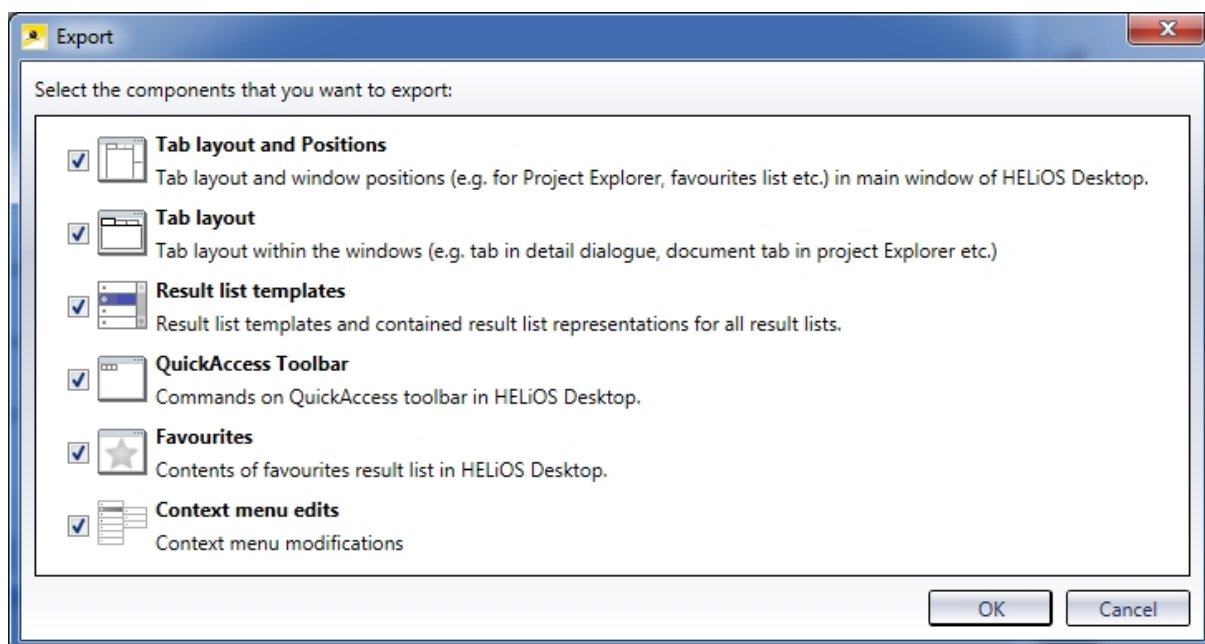


## Export and Import of settings

Individual settings of the HELiOS UI can be conveniently distributed among other users and workstations by selecting **View > Settings > Export**.



In the following selection dialogue you can specify for which UI areas the settings are to be exported:

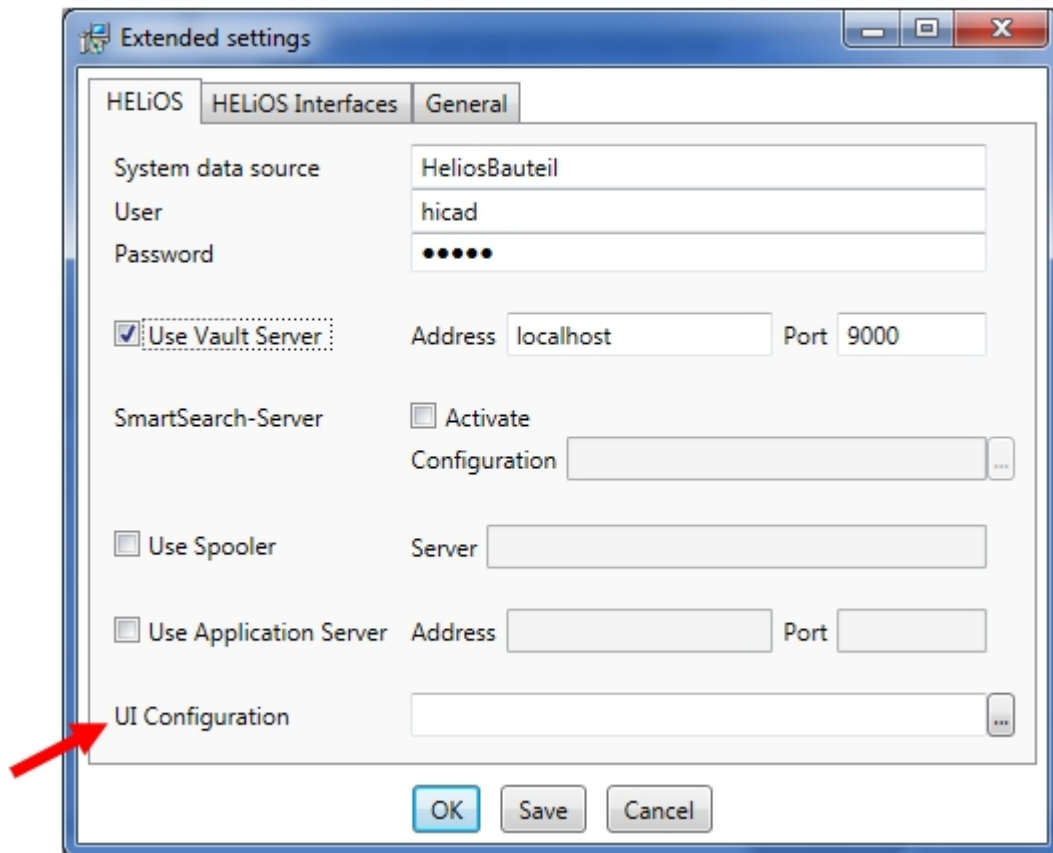


After confirming with **OK** a .zip file containing all relevant system files will be stored.

Via **Settings > Import** this .zip file can be loaded on all other HELiOS workstations and thus be used as the new default UI configuration.



You can also specify during import in the dialogue for which UI areas the settings are to apply, and select only particular elements from a "complete package". For instance, you can import Favourites from one workstation or user without changing your result list settings or window arrangements.

Furthermore, you have the option to import UI configurations when installing the HELiOS Desktop. In the Extended settings dialogue window of the installation mask you can import a UI configuration:






## Display of notes documents in result lists

If you work with notes documents, the status of an existing notes document will be indicated in the document result list via the attribute Redline (VA\_DocumentHasAnnotation) by means of an icon.

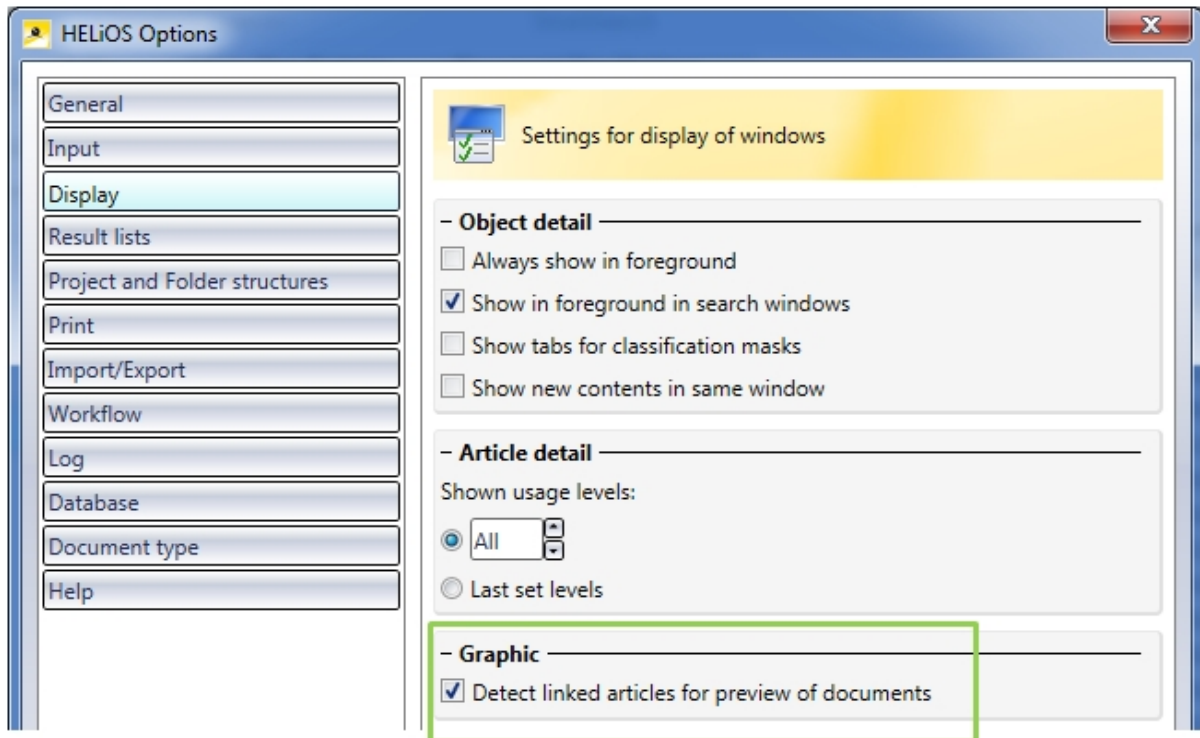
Redline	Document No.	Creation dat
	DN-000243	24.01.2017
	DN-000244	24.01.2017

Possible icons are:

-  A notes document exists for the document.
-  The notes document linked to the document has been accepted.
-  The notes document linked to the document has been rejected.

## New option for linked articles on 'Display' tab

On the **Display** tab of the **HELIOS Options** dialogue window you can now specify by activating or deactivating the **Detect linked articles for preview of documents** checkbox whether for the graphic preview of a document the list of all linked documents is to be loaded by default. Since this loading behaviour is very performance-intensive, you have the option to switch it off. In this case an article-independent graphic will be displayed.



## Notes on license configuration of ERP interfaces

If you use HELIOS in conjunction with ERP interfaces, please note the following change:

- The license module "PPS Interface" has been renamed to ERP Connect".
- The module "PPS Special" is no longer available.



# HELiOS Spooler

## Service Pack 2 (V 2202)

### Support of multiple identical printer drivers

From HELiOS 2017 Service Pack 2 onwards you can install multiple **ISD FilePrinters** on the same system.

This allows an easy selection of different receivers and postprocessing of print jobs, without having to choose printers and postprocessings separately.

### Conversions for SOLIDWORKS, AutoCAD and Inventor





From HELiOS 2017 Service Pack 2 onwards the HELiOS Spooler supports direct conversions from SOLIDWORKS, AutoCAD and Inventor into formats such as DXF, DWG, STEP and 3DPDF.

In AutoCAD the configuration file format PC3 (DevMode) is supported and, in Inventor, the creation of DXF files for Sheet Metal parts via the Spooler.

## Service Pack 1 (V 2201)

### HELiOS Spooler Admin Tool: Job statuses

If any print or conversion jobs that have been sent to the HELiOS Spooler cannot be processed, another attempt will be started half an hour later. The concerned jobs will first obtain the status **Failed** and will then be set to **Retry**:

	PN-01-06-K: DN-000001	SZA	Chief designer	09.05.2017 08:52:18	09.05.2017 08:53:55	 <b>Failed</b>	Conversion job
	PN-01-06-K: DN-000003	SZA	Chief designer	09.05.2017 09:45:43	09.05.2017 09:51:03	 <b>Retry</b>	Conversion job

### NCW export

From Service Pack 1 onwards, a conversion of CAD parts to the NCW format via the HELiOS Spooler will be possible.



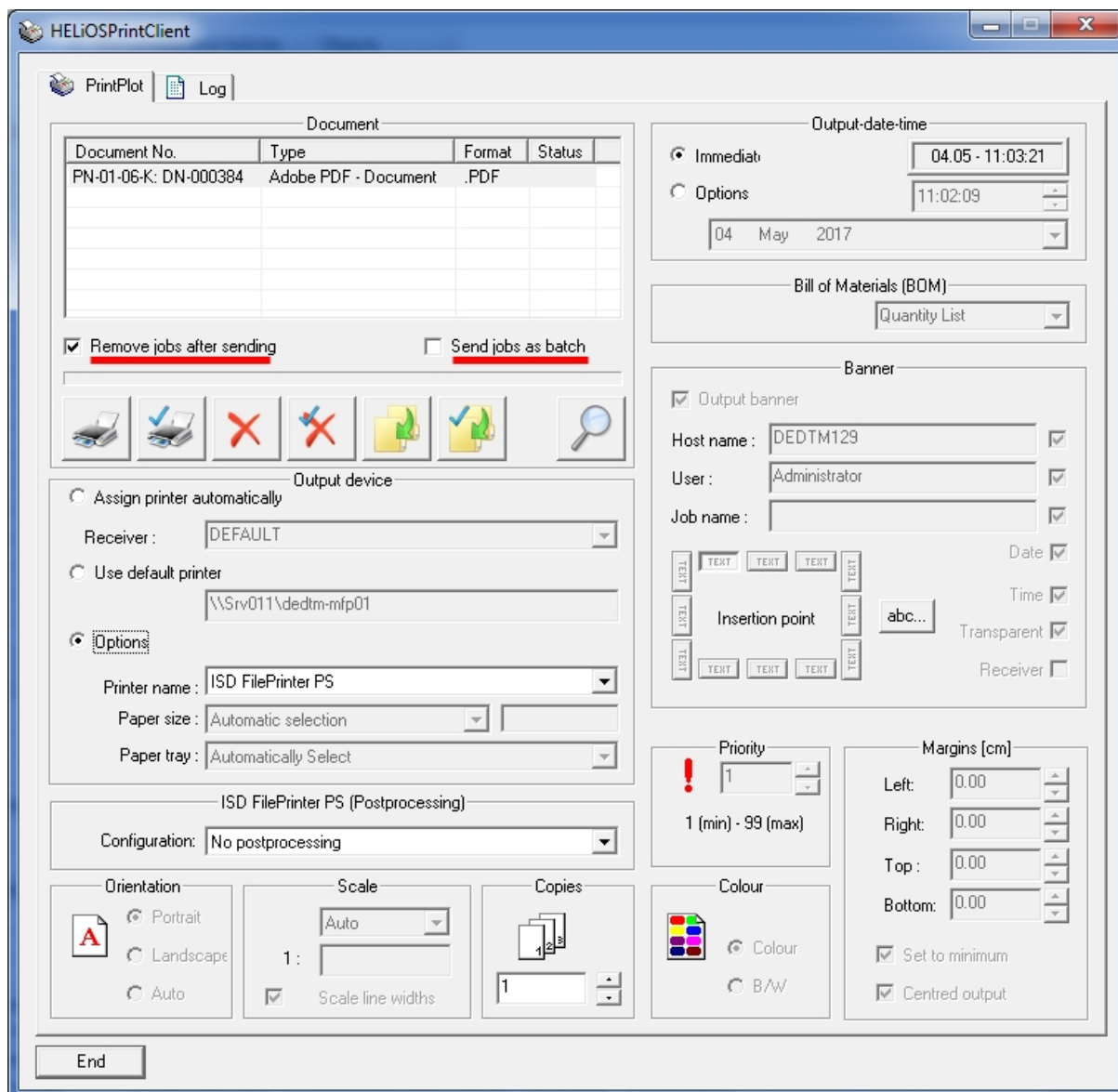
**Please note:**

A new installation of HELiOS will automatically provide this option. For an update installation to SP1, a manual adding of the corresponding entry in the system file Hel\_fileconvert.ini may be required (see also Notes on Conversion of .SZA Files via the Spooler).

The conversion to the NCX format is only possible for itemized Steel Engineering parts.

## HELiOS PrintClient: New options

The HELiOS PrintClient now offers two additional setting options that allow to sent print jobs multiple times or send them as batches:



- **Remove jobs after sending**

If this checkbox has been activated (default setting), print jobs will be deleted from the list after their sending and processing. Deactivate this checkbox if you want print jobs to remain in the list after their sending and processing. This allows you to repeat the print job directly in the PrintClient dialogue window.

- **Send jobs as batch**

If this checkbox has been activated, series of print jobs sent from your Client will be sent and processed as a batch, without interfering with print jobs of other Clients.

## Major Release 2017 (V 2200)

### Server settings

The Server settings of the HELiOS Spooler Admin Tools have new options that allow you to define how to proceed with the deletion of done print jobs from the system.

**- Auto-cleanup of done jobs**

Clean-up check interval (min.):

Max. number of jobs:

Max. days for jobs:

Remove failed jobs

### Other export formats

The following formats can now be exported via the Spooler: 3dvs, VRML, U3D und STL.

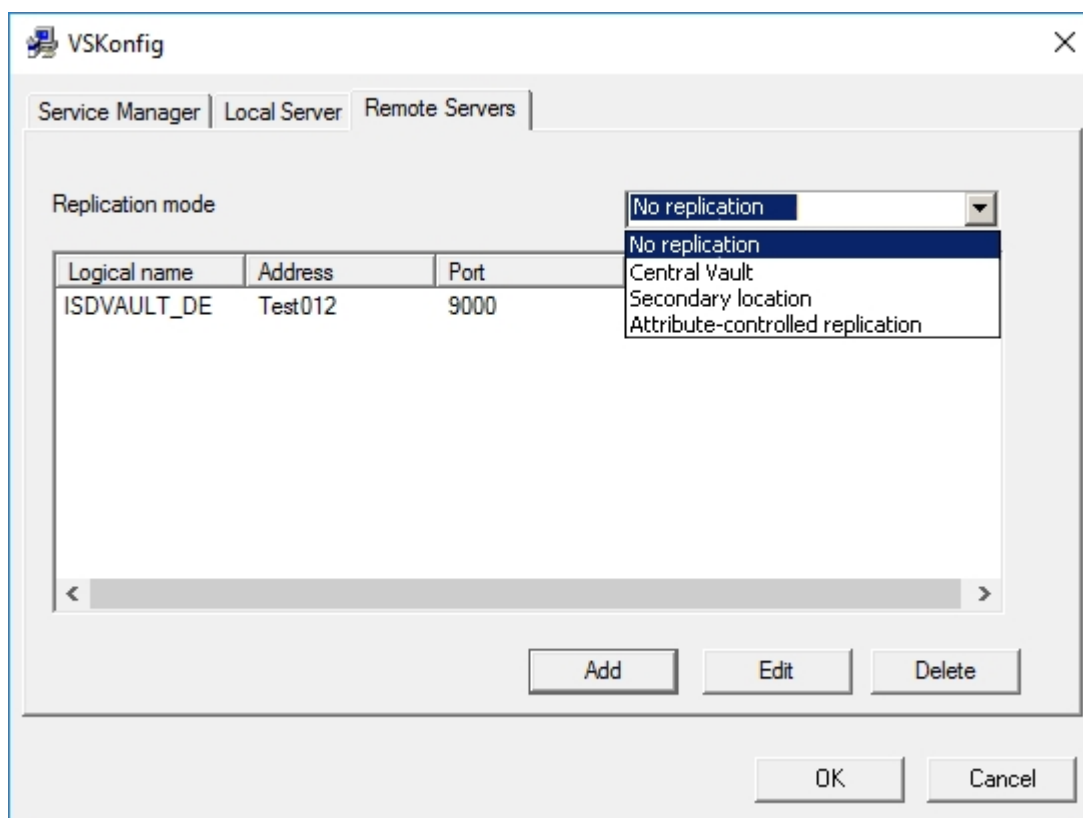
# HELiOS Vault Server

## Service Pack 1 (V.2201)

### Enhanced replication options with VSKonfig.exe

If you are using a network of several Vault Servers exchanging replicated files, one of them must be defined as the central Vault, and the other ones as secondary Vaults.

For this purpose the VSKonfig.exe tool now contains the additional options: In the **Replication mode** pull-down menu on the **Remote Servers** tab you can define a Vault as **Central Vault** or **Secondary Location**, and specify whether no replication is to be performed or an attribute-controlled one.

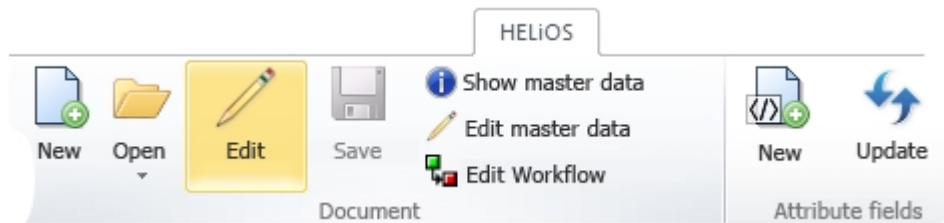


# HELiOS MS Office Interface

Major Release 2017 (V 2200)

## Edit Documents

If a read-only document has been opened in an Office application, you can click **Edit** to set it to an "In progress" state. In this state the document will be locked against editing by other users.



## Support of external references in Excel

The HELiOS-MS Excel interface now also supports external references.

If an Excel document contains references to external files, these can be recognized by HELiOS and the structure can be taken over accordingly.

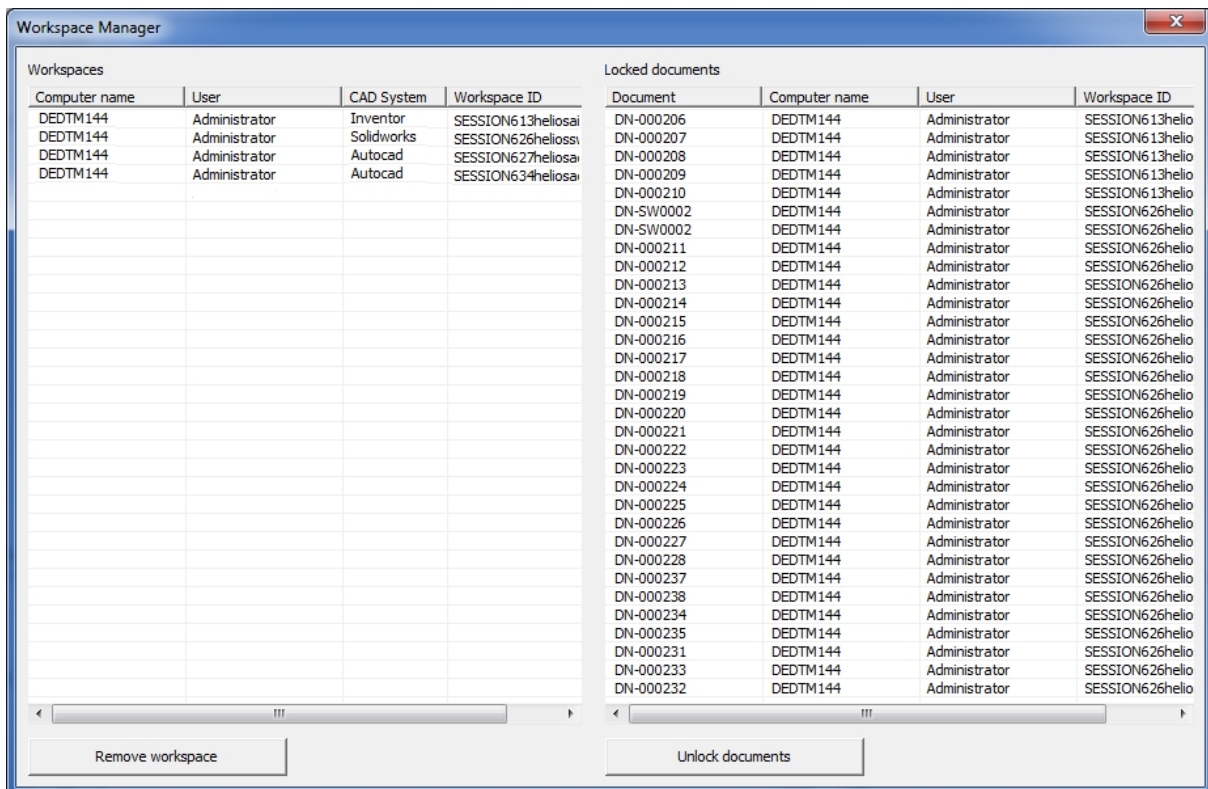
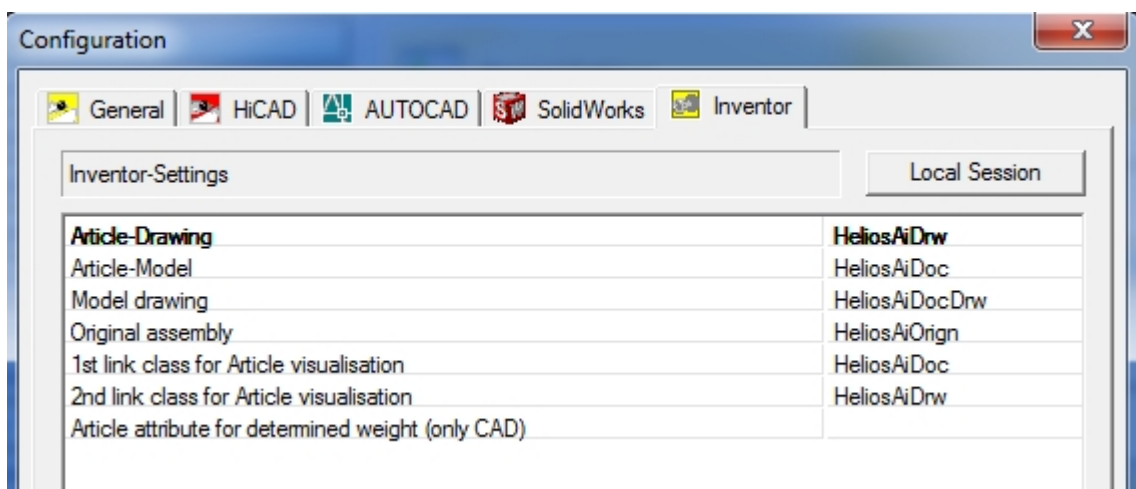
# HELiOS CAD/CAE Integrations

## Service Pack 2 (V 2202)

### Workspace Manager: Admin tool for Session Management

The **Workspace Manager** is a new tool for the session management of CAD documents.

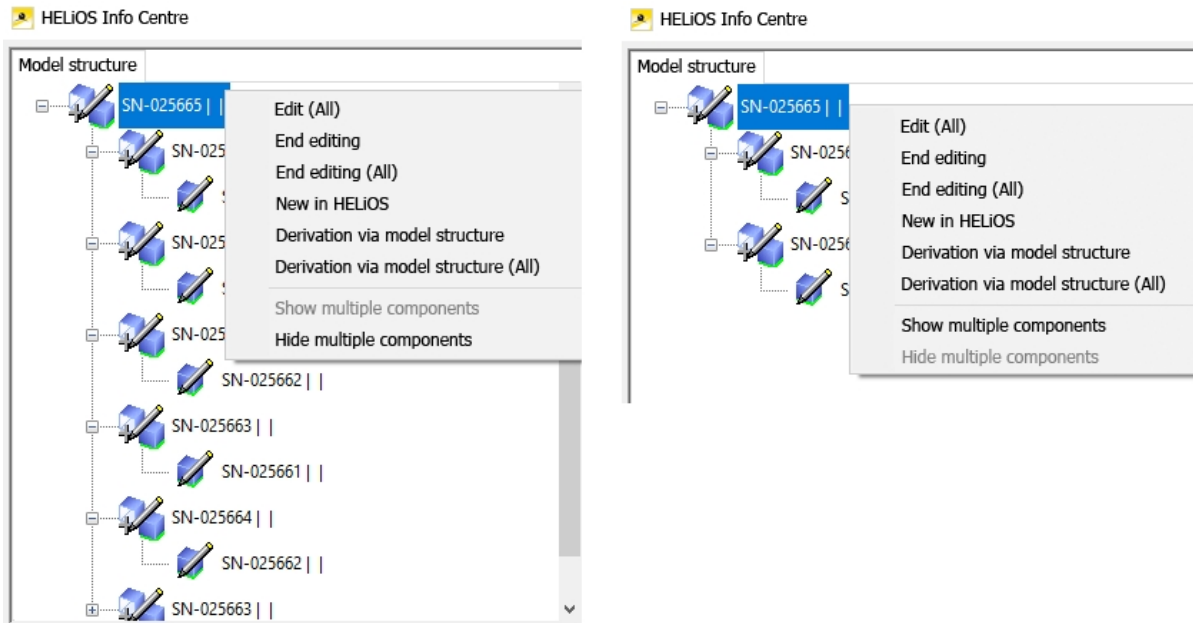
To start the tool, choose **HELiOS Options > Database**, activate the required MultiCAD tab (**AutoCAD**, **Inventor** or **SOLIDWORKS**) and click **Local session**.



### Performance increase and enhancements in various areas

All essential functions, e.g. loading and saving of assemblies, the display of the **HELIOS Info Centre**, the taking over or cancelling of modifications, the updating of result lists, as well as the integrated output of result lists for the **HELIOS Workspace** have been speeded up (Factor 6-10).

In the **HELIOS Info Center** you can display multiple identical parts as several (i.e.) all parts or as one single part: If you choose **Show multiple components**, all occurrences of the parts are shown individually. If you choose **Hide multiple components**, the multiple occurrences of the same part will be displayed in the **Model structure** and **Product structure** of the **Info Centre** as one single part.



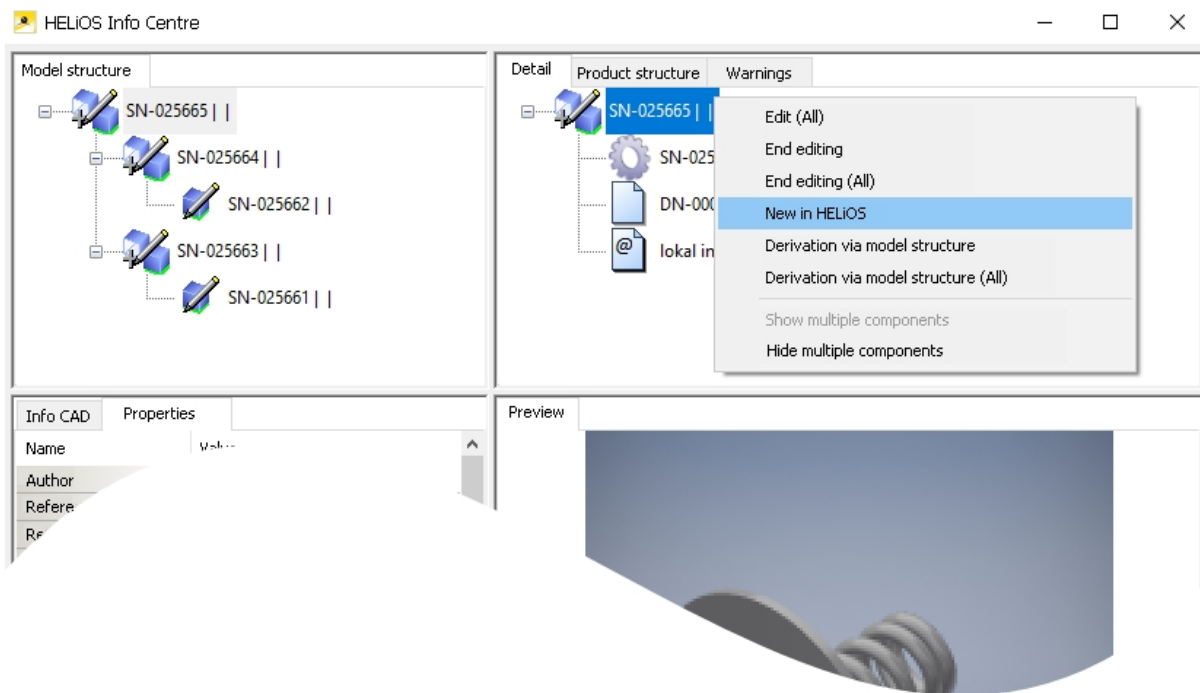
The **HELIOS Workspace** can be hidden and shown by a simple mouse click on the corresponding button on the menu bar.






The **Derivation via model structure** function is also available for SOLIDWORKS.

In Inventor, the functions **New in HELiOS** and **Derivation via model structure** also support "Skeletons" and dependent models and parts as well as linked drawings.



The **Qty.** column in the **Derivation via model structure** dialogue window shown you how many copies of a part are contained in the model drawing.

 Derive model structure

Standard

Derive	Qty.	New article number
SN-025787	1	
DN-000340	1	
SN-025730:1	1	
SN-025755:1	1	
SN-025760:1	1	
SN-025757:1	1	
SN-025764:1	1	
SN-025754:1	2	
SN-025762:1	2	
SN-025752:1	2	
SN-025750:1	2	
SN-025753:1	2	
SN-025756:1	2	
SN-025748:1	2	
SN-025749:1	1	
SN-025751:1	1	
SN-025761:1	4	
SN-025719:1	8	
SN-025763:1	2	
SN-025759:1	6	
SN-025758:1	2	

The **Create index** function can be found both on the **HELIOS -Assembly** and the **HELIOS - Active part** Ribbon tab. This allows the creation of a new index for the entire product structure as well as for an individual part on the assembly via a simple click in the user interface.

## Service Pack 1 (V 2201)

### Improved user-friendliness

Thanks to the revised Look & Feel of the Multi-CAD applications of HELiOS a further increase of the user-friendliness could be achieved.

This concerns the HELiOS menus in the Ribbon bars of AutoCAD, Inventor and SOLIDWORKS as well as the performance of the dockable **Workspace** window that you can find in each interface.

## Major Release 2017 (V 2200)

### Significantly enhanced performance of HELiOS Add-ins

The performance of the HELiOS Add-ins could be increased significantly with regard to the loading or saving large drawings, or the transfer of a large number of modifications to HELiOS.

These processes are now performed up to 5 times faster, which helps you save design time.

### Deriving via model structure with multiple linked drawings

The "Create derivation" function of HELiOS can now also be executed in interfaced CAD systems via the model structure if more than one drawing is linked to the relevant article.

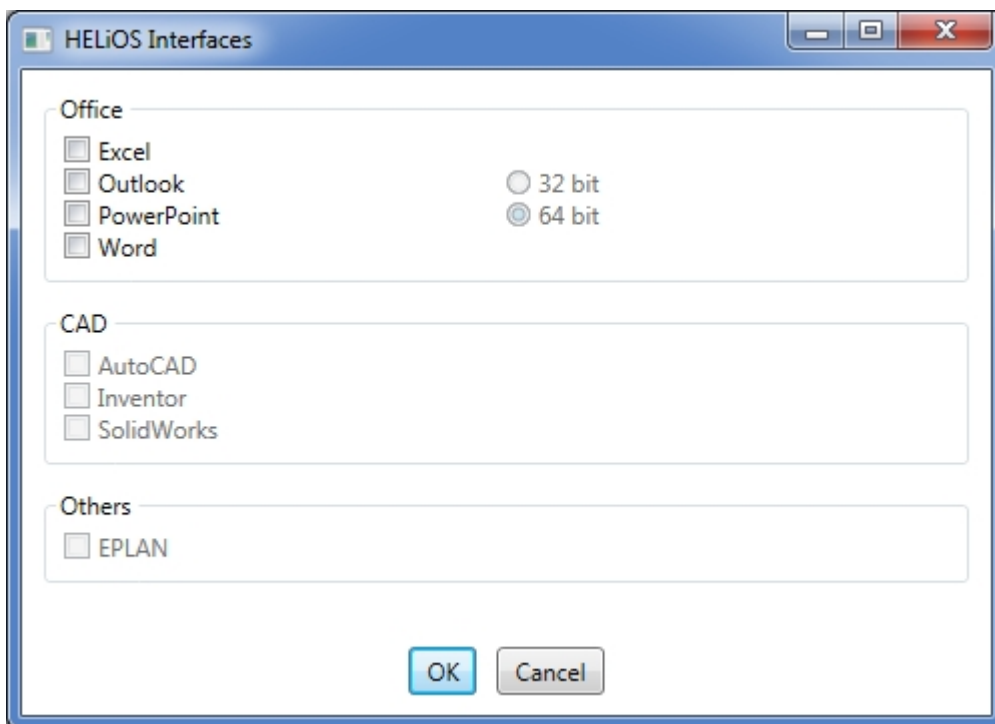
### Manual registration of MultiCAD-Add-ins with HeliosCouplings.exe

If you are using HiCAD in conjunction with HELiOS on your system, it is (in contrast to the standalone version of the HELiOS Desktop) not possible to set up interfaces between HELiOS and other CAD and CAE software via an update/-modification installation.

For this purpose the HELiOSCouplings.exe tool (in the /exe/ directory of your HiCAD installation is available.

This tool enables you to create interfaces to AutoCAD, Inventor, SOLIDWORKS or EPLAN. The dialogue looks like the "HELiOS Interfaces" tab of the "Extended settings" dialogue window that appears during the installation process.

A prerequisite for this is that the corresponding software has already been installed on the system.

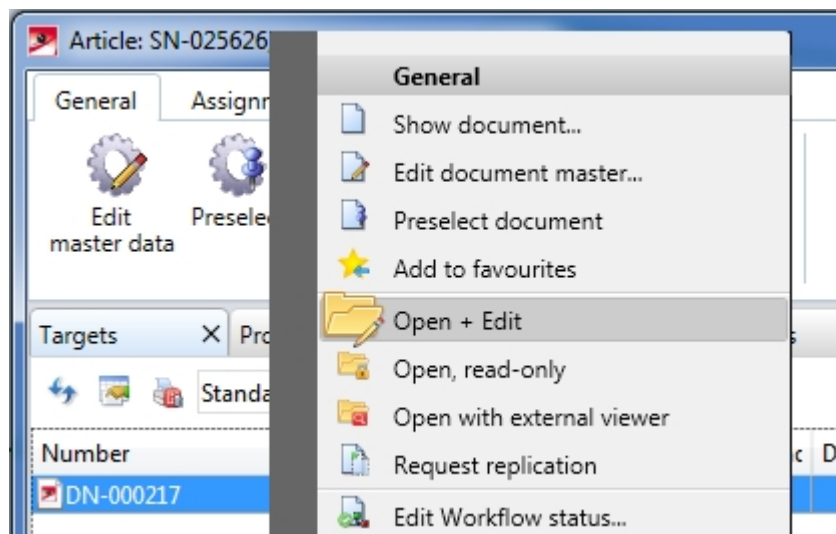


# HELiOS in HiCAD

## Service Pack 2 (V 2202)

### Loading of HiCAD drawings from HELiOS dialogue windows

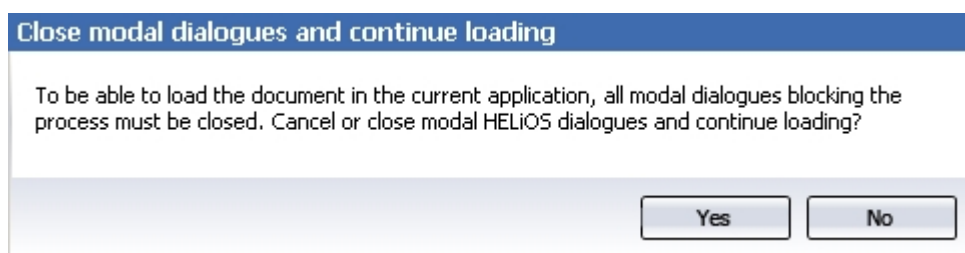
In older versions a direct loading of documents from HELiOS dialogue windows into HiCAD via the context menu function **Open + Edit** was not possible.



In such cases an error message was displayed, saying that the action is not possible.

From HELiOS 2017 Service Pack 2 onwards this action can be carried out without any problems.

If any modal HELiOS dialogues are still open, blocking the opening of documents, a message will be shown, asking you whether these dialogues should be closed to enable the opening of the documents:



## Service Pack 1 2017 (V 2201)

### NCW export

From Service Pack 1 onwards, a conversion of CAD parts to the NCW format via the HELiOS Spooler will be possible.

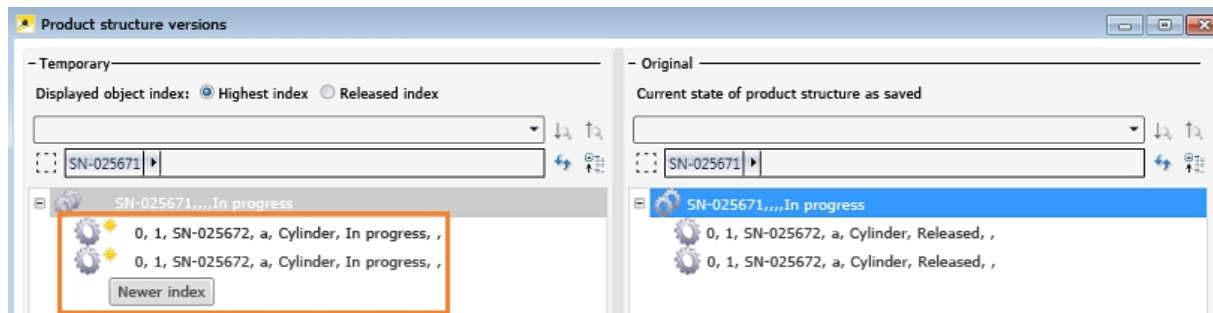


A new installation of HELiOS will automatically provide this option. For an update installation to SP1, a manual adding of the corresponding entry in the system file `Hel_fileconvert.ini` may be required (see also Notes on Conversion of .SZA Files via the Spooler).

## Major Release 2017 (V 2200)

### Marking of newer indices in the product structure

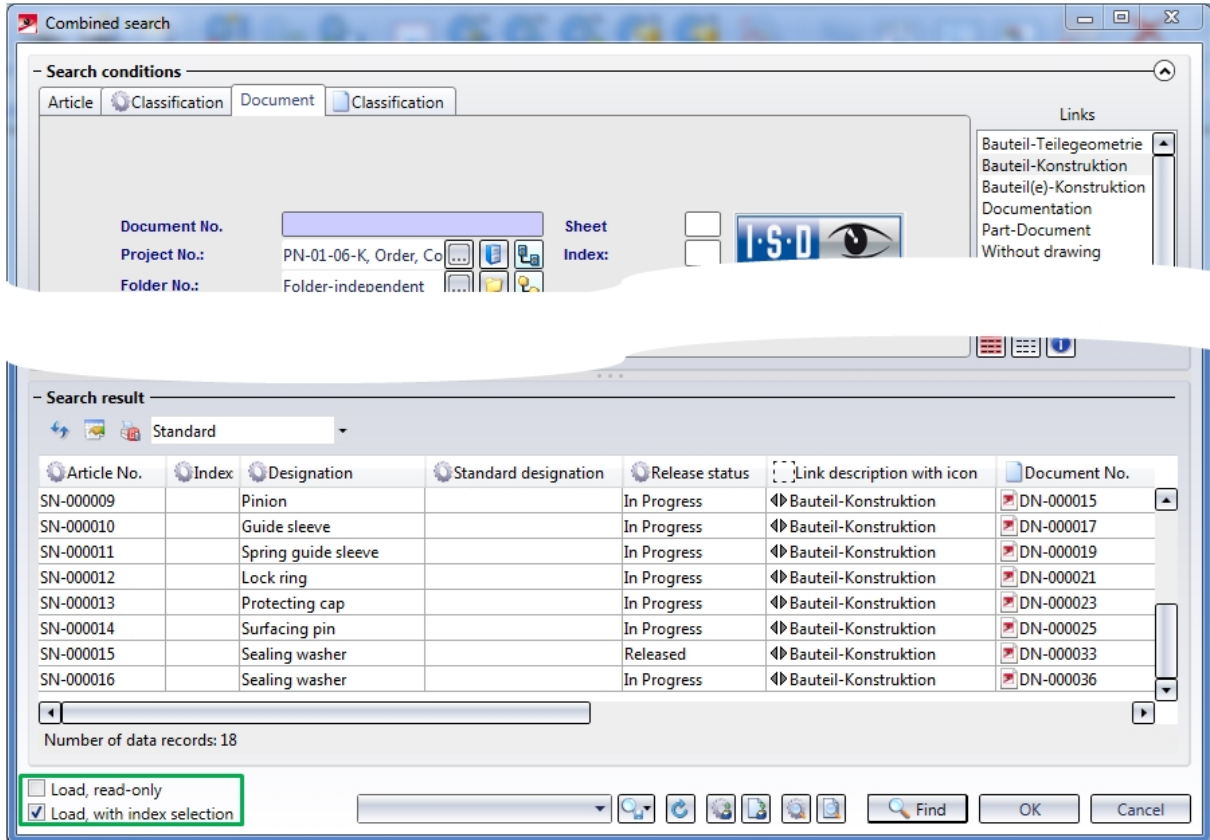
When transferring the product structure to HELiOS, or when displaying the **Product structure versions** dialogue, newer indices will be marked with a yellow star-shaped symbol.



### Load with index selection

When loading Documents and Articles via the **Combined search** dialogue you have now the option to activate the **Load, with index selection** checkbox.

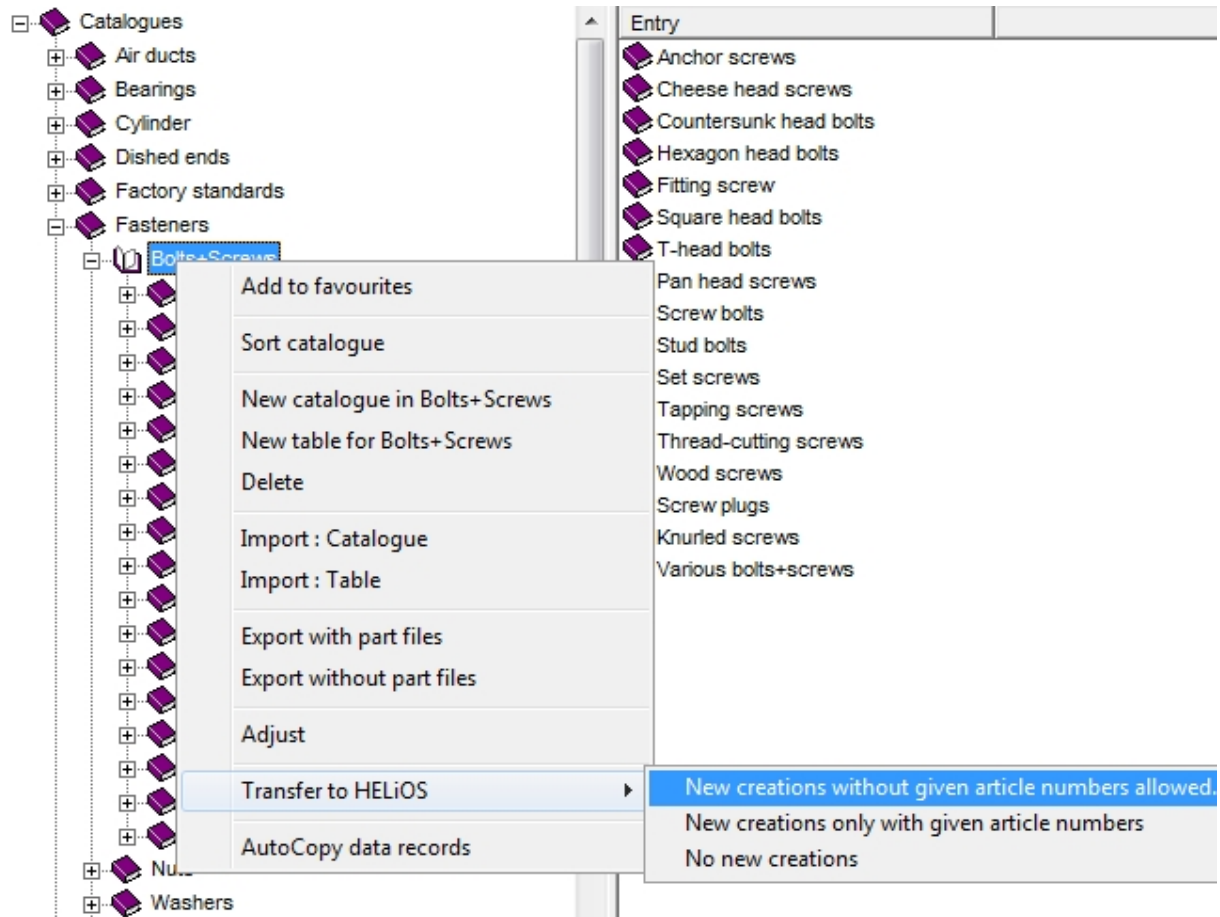
If older indices exist for a selected document, they will then also be loaded into HiCAD via the following dialogue window.





## Performance

For standard parts transfer from the HiCAD catalogue to HELiOS a performance increase of up to 25% could be achieved.



The performance for the filling in of title blocks in drawing frames with HELiOS data has also been increased.

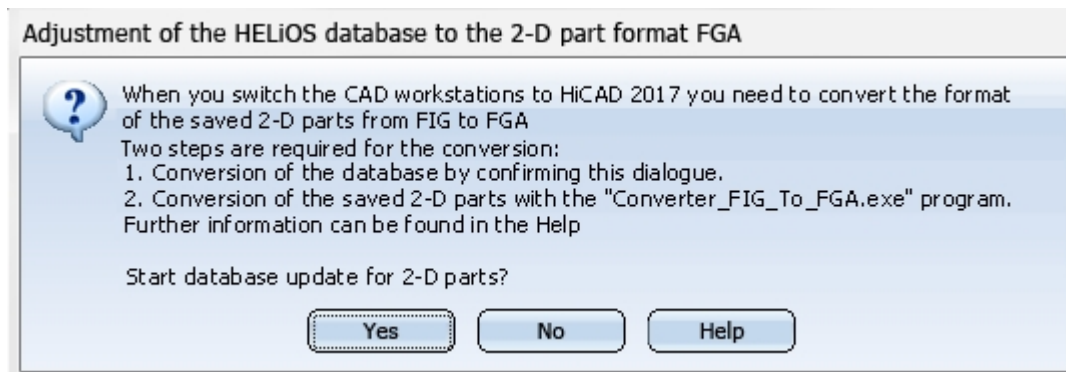
## New data format - Conversion required for updates

HiCAD 2017 comes with the new 2-D figures archive with the file name extension .FGA. Please use only this new .FGA format. For the conversion of existing 2-D FIG files you can use the Converter\_FIG\_To\_FGA.exe tool in the HiCAD\exe directory. You can also install this converter from the installation DVD.

When you perform an update to HiCAD 2017, the 2-D parts that are supplied with HiCAD by default (e.g. drawing frames) will be switched from FIG to FGA in different locations of the installation directory. Before their conversion, the data are saved in their original state in a folder or ZIP archive, respectively, to the "Szenen" and "Kataloge" directories. A LOG file in each directory records all converted files.

When you create an interface between HiCAD 2017 and HELiOS you will be prompted after a new or an update installation to adjust the database accordingly. The search for and management of 2-D parts will only be possible after a successful adjustment of the database and the conversion of the existing FIG files.

If you manage the HiCAD files in HELiOS, the following message will appear when you start HiDAD for the first time after a new or update installation of HiCAD 2017:



Click **Yes** to start the conversion of data in the database. This means that the linked 2-D part name contained in the data set will be changed from \*.FIG to \*.FGA. The database will then only search for FGA files. Therefore, the 2-D parts now need to be converted to FGA files by means of the Converter\_FIG\_To\_FGA.exe tool.

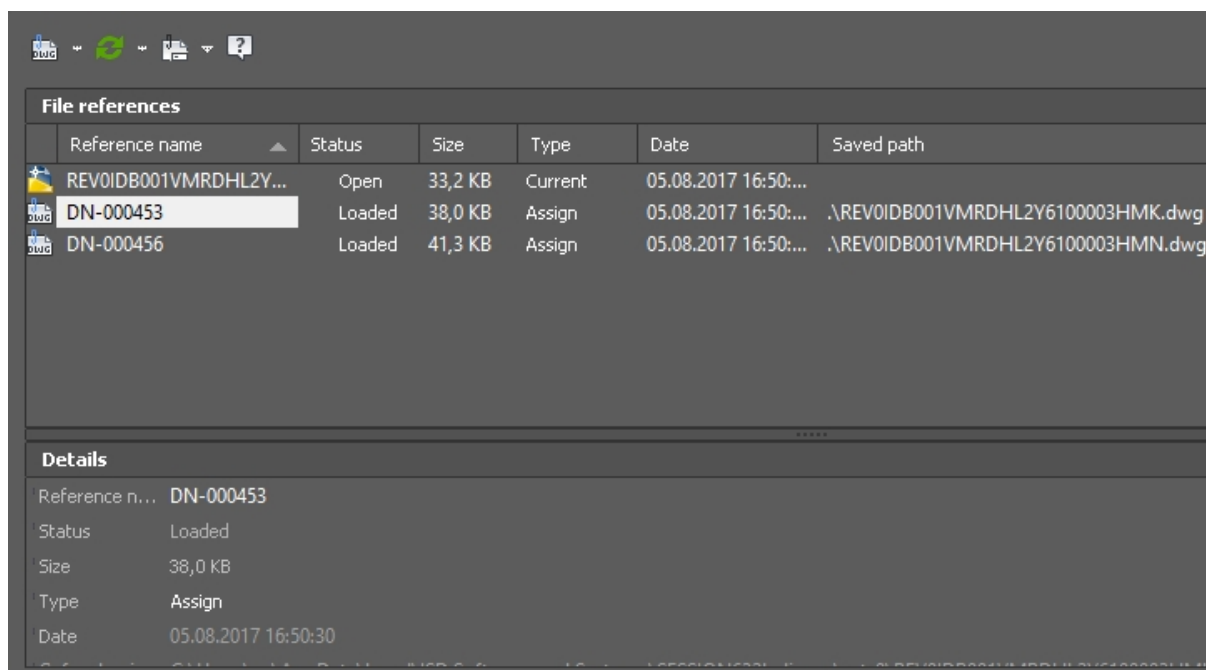
If you have installed HiCAD 2017 for test purposes, you need to click **No** here. Older versions (before HiCAD 2017) cannot load FGA files. Please note that the database adjustment cannot be revoked!

# HELiOS for AutoCAD

## Service Pack 2 (V 2202)

### External references: Configure display of document names

The names of external references shown in AutoCAD can be configured in such a way that a HELiOS attribute, e.g. the Document No, will be shown in their place.



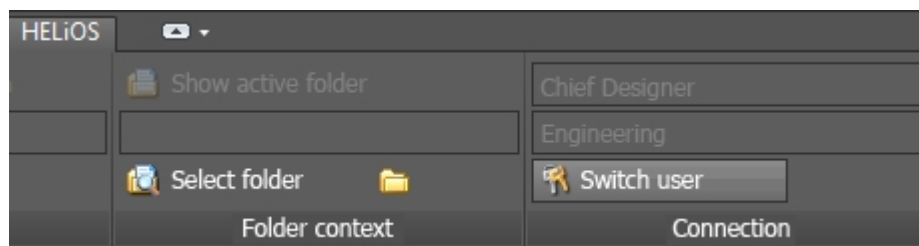
### Switch user

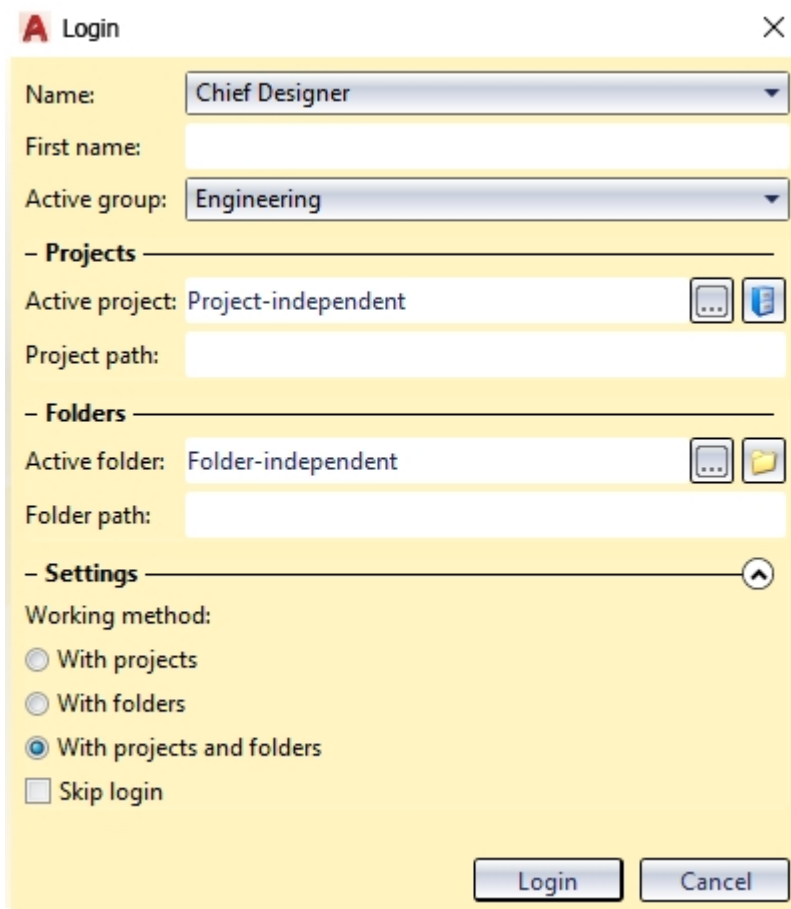
In the **Connection** function group of the **HELiOS** Ribbon tab you can find the **Switch user** function.

When you call the function, the Login window that you know from the start of the HELiOS-AutoCAD interface will be displayed.

Here you can not only switch the HELiOS user and the active user group while the program is running, but also the project and/or the folder.

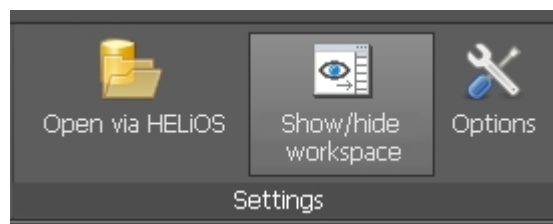
When you expand the **Settings** area you can choose whether you want to work with projects, folders or with both.





### Show/Hide workspace

The Workspace window of HELiOS can be shown and hidden by clicking a button in the **Settings** function group of the HELiOS Ribbon tab.



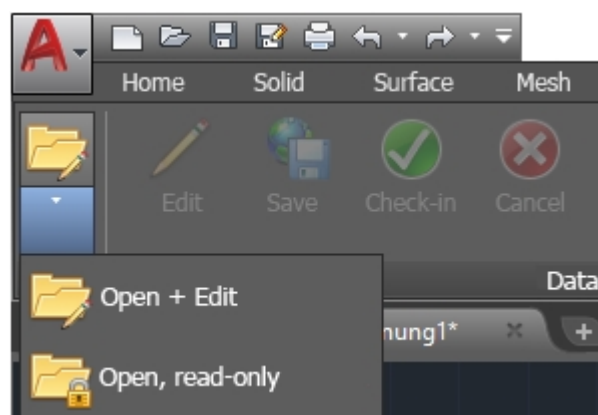
## Service Pack 1 (V 2201)

### AutoCAD 2018

Service Pack 1 of HELiOS 2017 supports Version 2018 of AutoCAD.

#### Flexible handling of editing statuses of documents

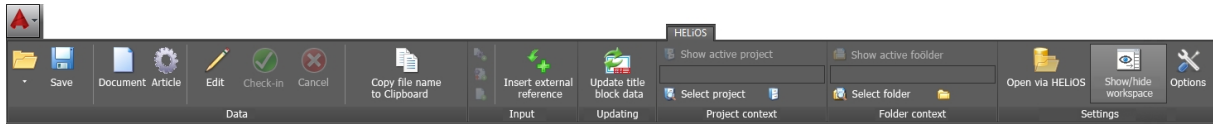
The HELiOS menu in AutoCAD has been revised. For instance, you can now open documents for direct editing or in "read-only" state. Also, you have the option to set opened, read-only-documents to an edited state ("In progress") without having to reload them.



## Major Release 2017 (V 2200)

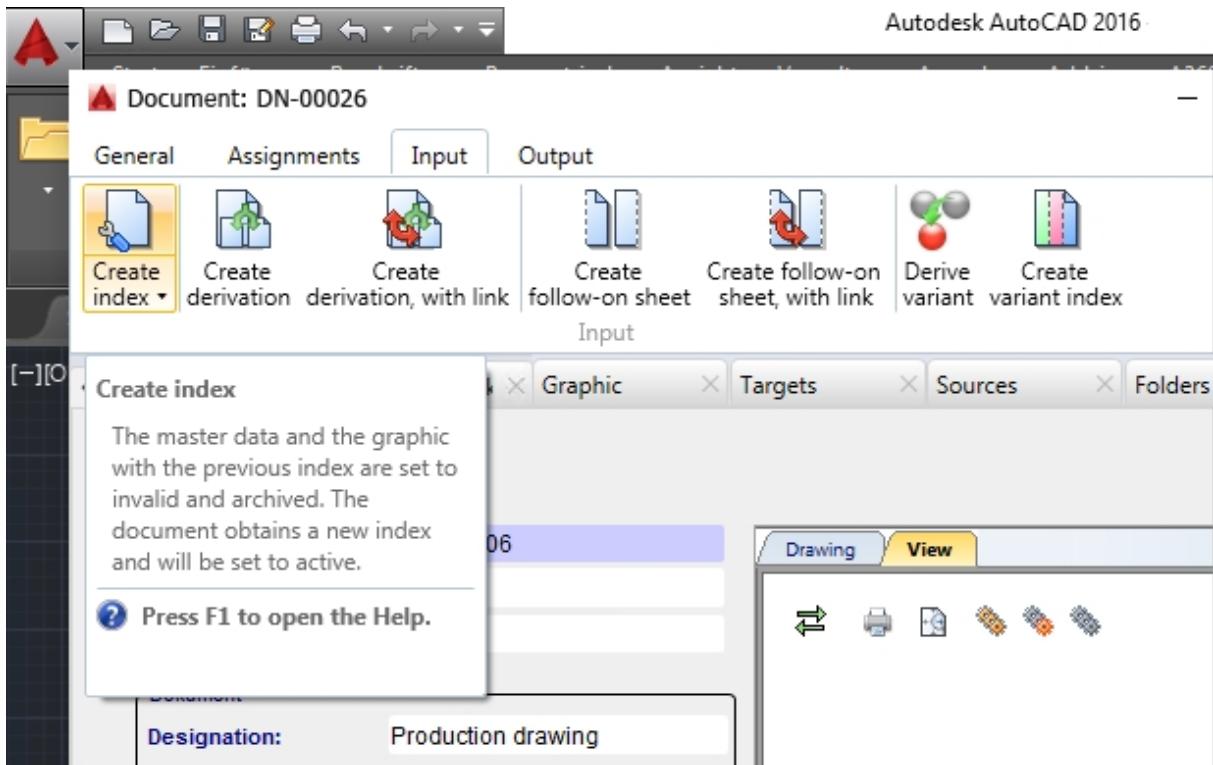
### New Ribbon menu and HELiOS Workspace

The **HELiOS menu** in AutoCAD has been adapted to the latest Ribbon technology:

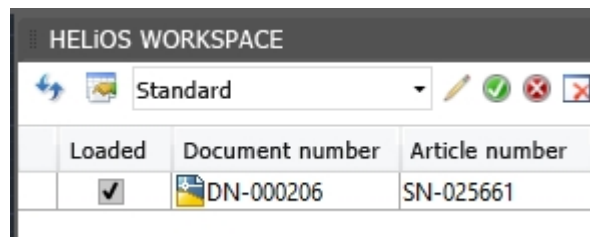


Some functions that could previously be found in the **HELiOS menu** (e.g. for index creation or and deriving of HELiOS documents) are now available in the corresponding function groups of the detail mask Ribbons or in various context menus.

As a result, you will have access to the full range of HELiOS Desktop functions in AutoCAD.




The **HELiOS Workspace** is a dockable window listing all documents of the current session.



From here you can load and edit documents in AutoCAD or call their master data in a HELiOS detail window.

Also, you have access to the full range of the HELiOS document context menu functions, as well as the result list configuration allowing you to add or remove attributes of the result list.

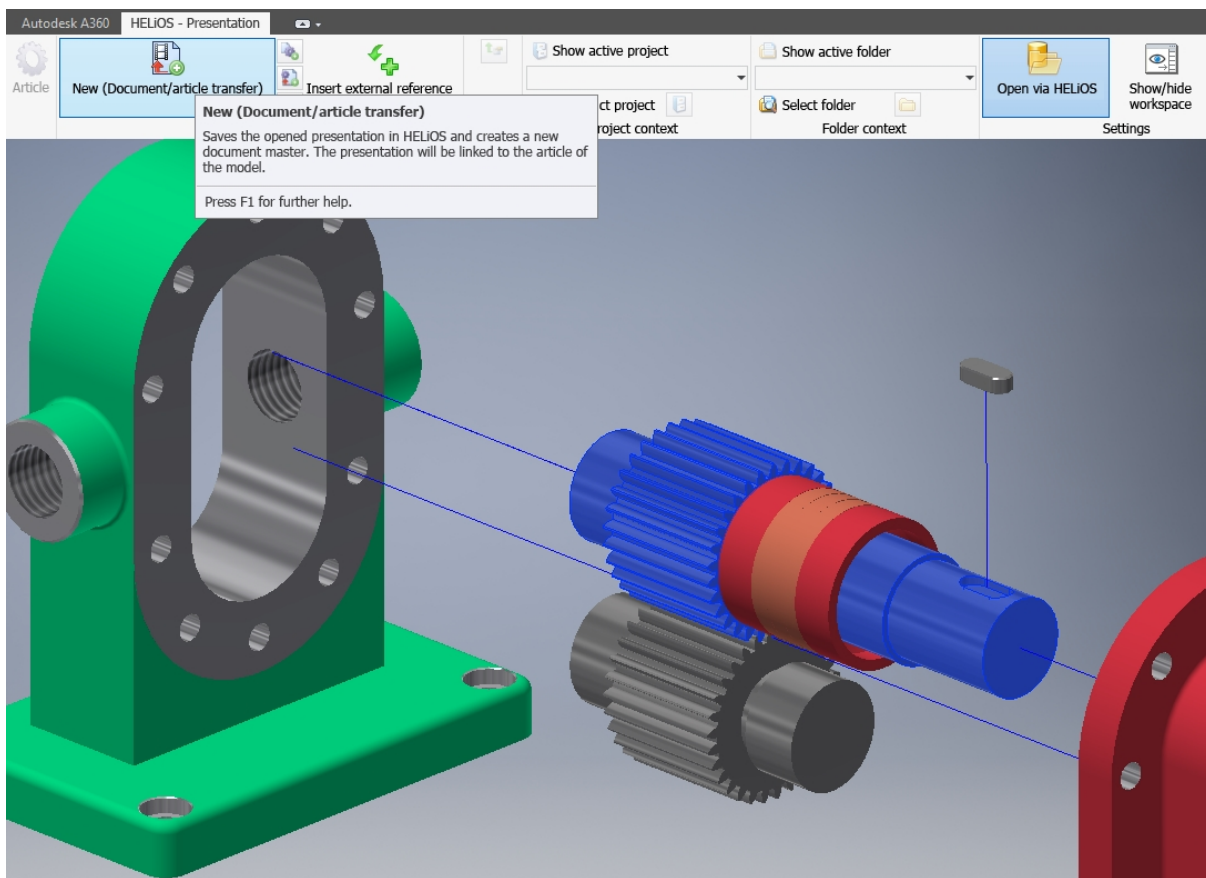
The drawing that is currently active in the CAD workspace will be marked with a green dot  in the **Loaded** column of the **HELiOS Workspace** window.

# HELiOS for Autodesk Inventor


## Service Pack 2 (V 2202)

### Support of Inventor Presentation files (IPNs)

Presentation files by Inventor (IPNs) are recognized by HELiOS and can be saved and managed with all contained parts and assemblies as documents and articles in HELiOS via the **HELiOS - Presentation** Ribbon tab:

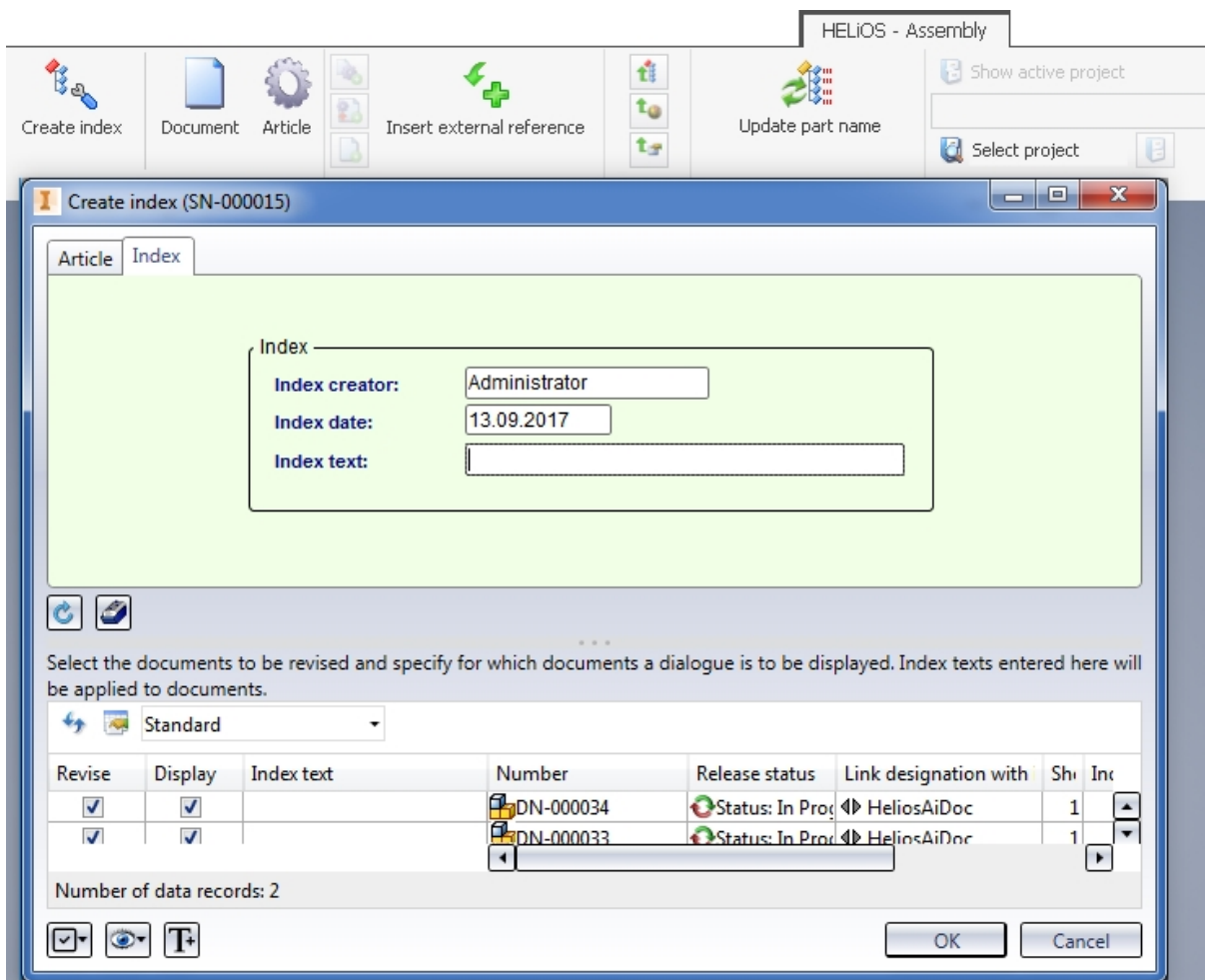


### Create indices for parts and assemblies


On the Ribbon tabs for the HELiOS Part, the Assembly and the Active part you can find the  **Create index** function.

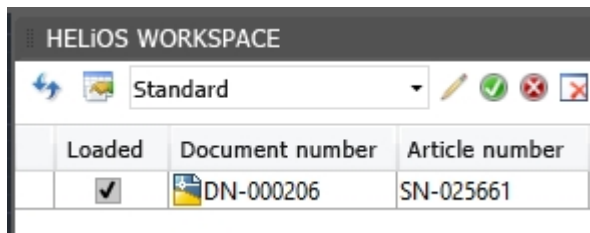
This function creates a traceable new version of the document via the model structure within the current context.





## Hide/show workspace

The HELIOS Workspace window can be hidden or shown by clicking the  button in the Settings function group of the HELIOS Ribbon tab.



## New in HELiOS: Linked drawings

The automatic taking over of linked part and assembly drawings upon the saving of parts with the **New in HELiOS** function of the HELIOS **Info Centre** has been enhanced:

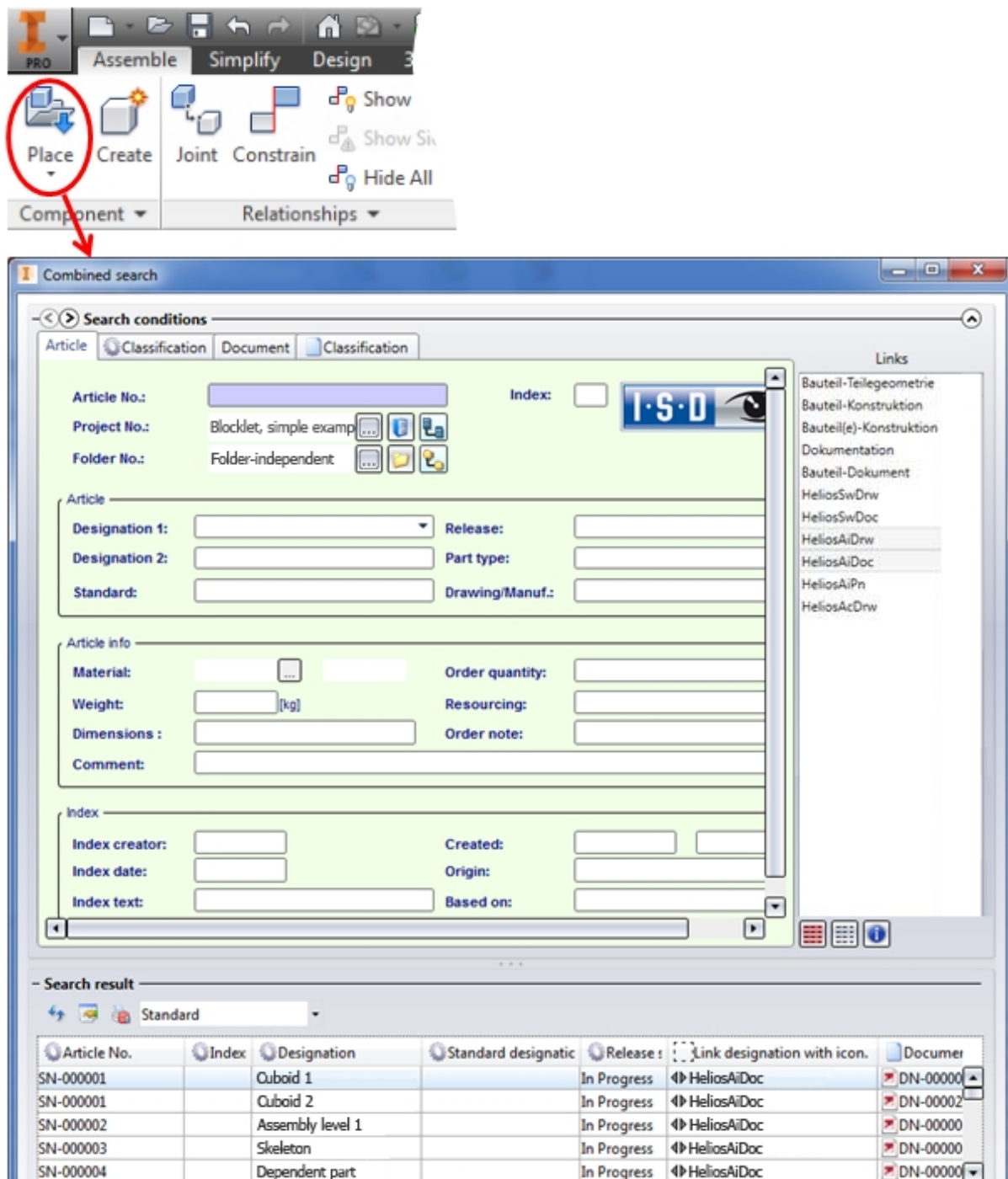
The file name of the drawing before the file extension (.idw) does not need to be identical with that of the assembly (.iam) or that of the part (.ipt). Drawings will be recognized as associated drawings if they begin with the same name as the corresponding part or assembly, without requiring identical naming.

Example: File names of drawings resulting from a specific part name, plus one numerical supplement. That is, a drawing called "InventorPart-01.idw" belonging to an "InventorPart.ipt" will be found and correctly associated.

## Placing of multiple parts in Inventor

When using the Inventor function **Place** you have the option to insert several articles/parts in Inventor via multiple selections in the result list of the HELIOS **Combined search**.

After marking the desired objects and confirming with **OK** the corresponding object selection will be inserted in Inventor.



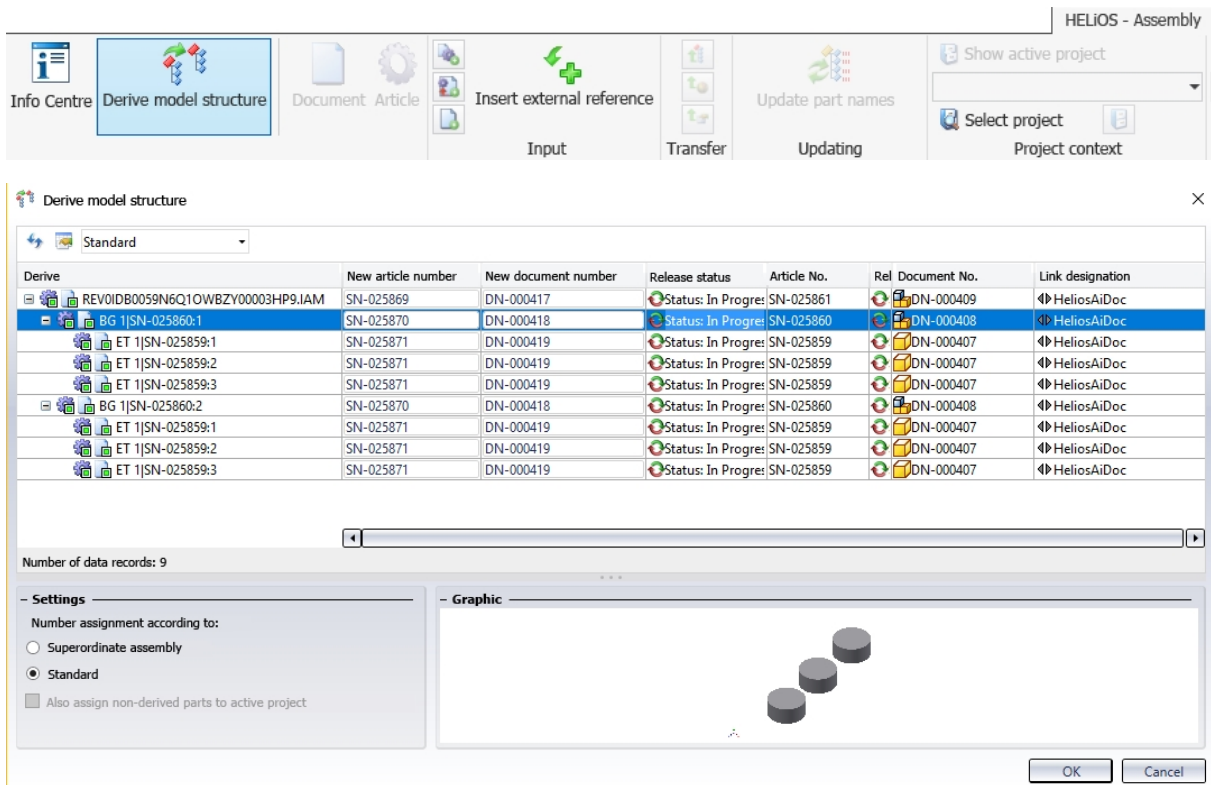
## Service Pack 1 (V 2201)

### Deriving of model structure via CAD structure

The functionality for derivations via CAD model structures has been revised. The new Look & Feel now also offers linked drawings for derivation in the structure.

Also, you have now the option to have the new article numbers to be generated on the basis of the superordinate assembly and change them manually before starting the derivation.

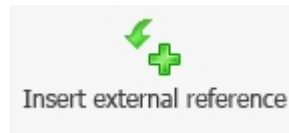
All attributes can be displayed beside the structure tree to provide the user with additional information. Shared Skeletons (dependent parts) will be considered for the derivation.



## Inventor 2018

HELiOS 2017 SP1 supports Autodesk Inventor Version 2018.

### Insert external references



You can use the new menu item **Insert external reference** (in the **Input** function group of your **HELiOS** menu in Inventor) to add HELiOS documents to the Inventor structure as external reference files, e.g. Excel files for a control of the Inventor model.

The selection takes place via the HELiOS document search.

When loading or exporting the linked Inventor documents, the also required external document will then automatically be provided by HELiOS.

### Further optimisations and enhancements of the UI

The HELiOS dialogue masks and context menus displayed in the Inventor UI have been further enhanced and adjusted to the current HELiOS Desktop standards.

Furthermore, the design of the **HELiOS Workspace**docking window has been improved.

### Support of DWG drawing format

Since Inventor 2015 the configurable default drawing format has been DWG instead of IDW.

As of HELiOS 2017 SP1, drawings in the DWG format can be created, saved and modified via Inventor. Furthermore, a simultaneous operation of an interface between HELiOS and Inventor as well as AutoCAD is possible.


## Major Release 2017 (V 2200)

### Performance and user-friendliness

Loading of HELiOS data into Inventor now takes place up to 10 times faster.

Components in the Inventor context that have been set to "In progress" via double-click are now also automatically set to "In progress" in the HELiOS Vault.

A further performance increase could be achieved for the dockable session management window, the so-called **HELiOS Workspace**. There you have access to the full range of functions for **Combined HELiOS result lists**, i.e. article attributes that are linked to the document of the session can be integrated into the result list of the window, where they can be positioned as desired.

The drawing that is currently active in the CAD workspace will be marked with a green dot  in the **Loaded** column.

Furthermore, the HELiOS interface supports different models in one drawing. For updates the main view will be considered that results from the so-called "CAD triangle":


# HELIOS for SOLIDWORKS

## Service Pack 2 (V 2202)

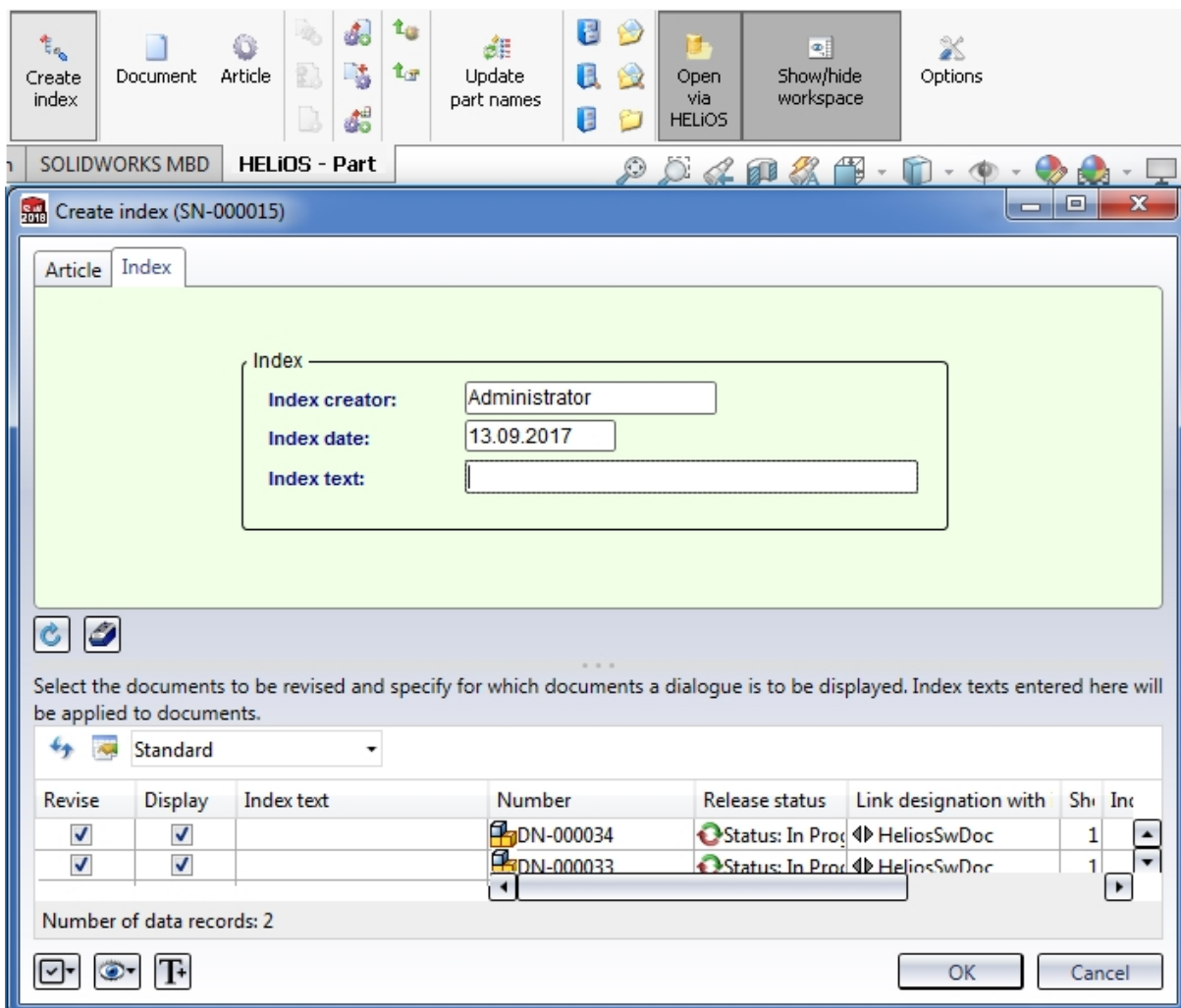
### SOLIDWORKS 2018

HELIOS 2017 Service Pack 2 supports SOLIDWORKS 2018 in 64 Bit.

### Create indices for Parts and Assemblies

In the context of parts, assemblies or active parts you can find the  **Create index** function.

You can use the function to create a traceable modification of a document via the model structure.

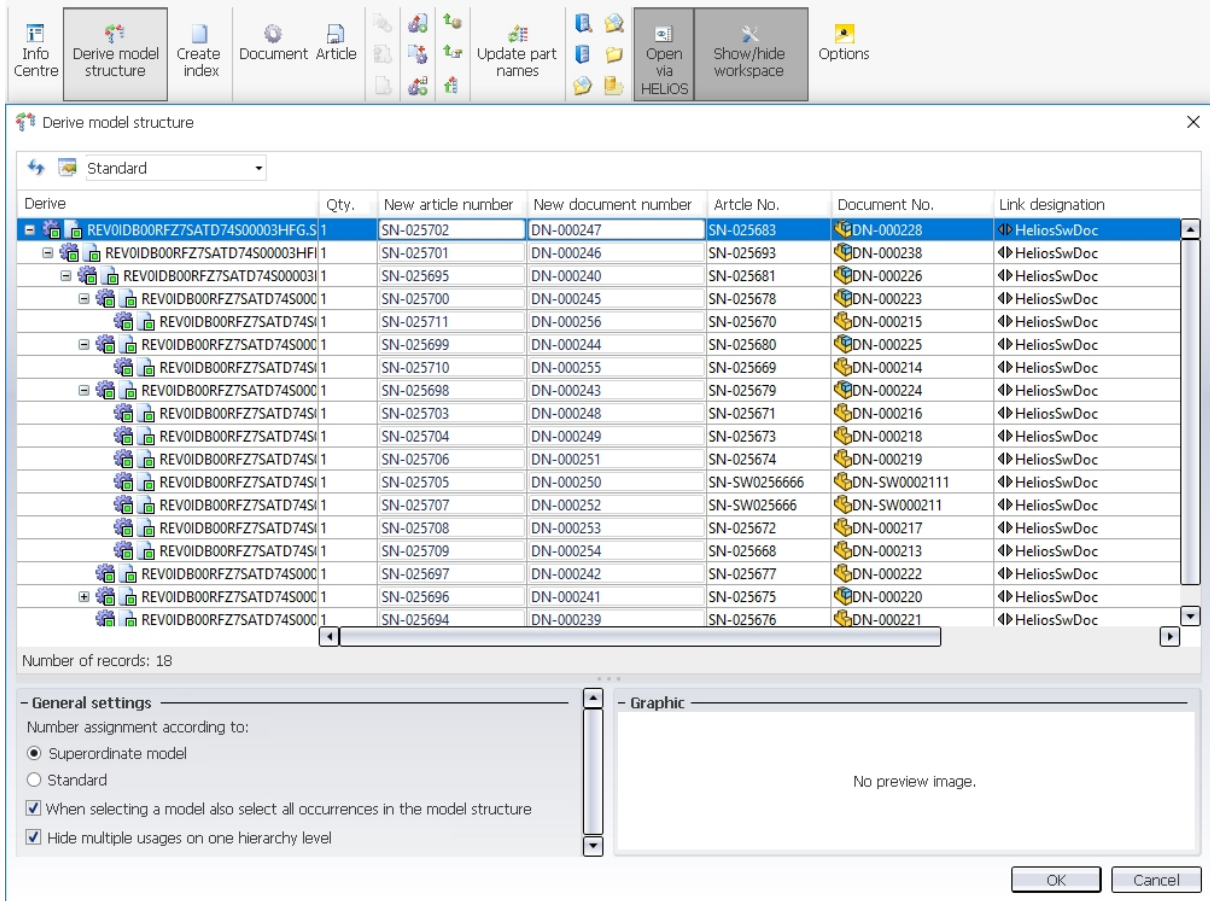


### Deriving of model structure via CAD structure

The functionality for derivations via CAD model structures has been revised. The new Look & Feel now also offers linked drawings for derivation in the structure.

Also, you have now the option to have the new article numbers to be generated on the basis of the superordinate assembly and change them manually before starting the derivation.

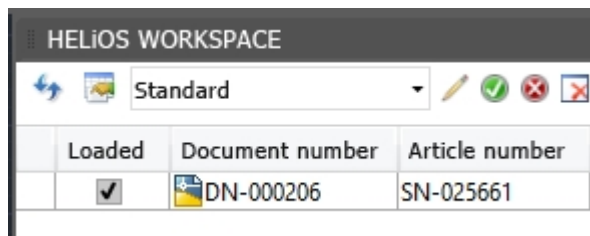
All attributes can be displayed beside the structure tree to provide the user with additional information. Shared Skeletons (dependent parts) will be considered for the derivation.



The Qty. column shows you how many copies of a part are contained in the model drawing.

### Hide/show workspace

The HELiOS Workspace window can be hidden or shown by clicking the  button on the HELiOS Ribbon tab.






## Major Release 2017 (V 2200)

### SOLIDWORKS 2017

HELiOS 2017 supports SOLIDWORKS 2017 in 64 Bit.

### HELiOS Workspace

The dockable session management window, the so-called **HELiOS Workspace**, gives you access to the full range of functions for **Combined HELiOS result lists**, i.e. article attributes that are linked to the document of the session can be integrated into the result list of the window, where they can be positioned as desired.

The drawing that is currently active in the CAD workspace will be marked with a green dot  in the **Loaded** column.

Also, a general performance increase could be achieved for the operation of the workspace window.

Furthermore, the HELiOS interface supports different models in one drawing. For updates the main view will be considered that results from the so-called "CAD triangle":

## HELIOS & EPLAN

### Service Pack 2 (V 2202)

#### Support of EPLAN 2.7

HELIOS 2017 SP2 supports the current EPLAN Version 2.7.

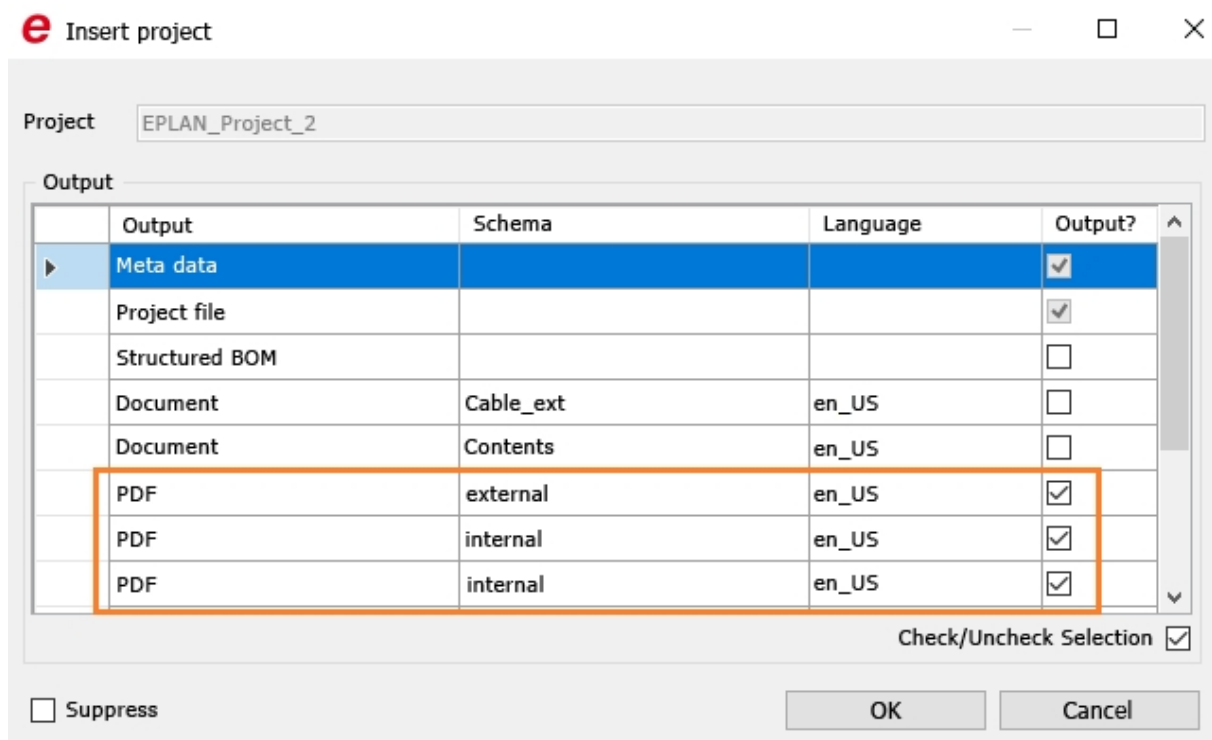
## Major Release 2017 (V 2200)

### Support of EPLAN 2.5 and 2.6

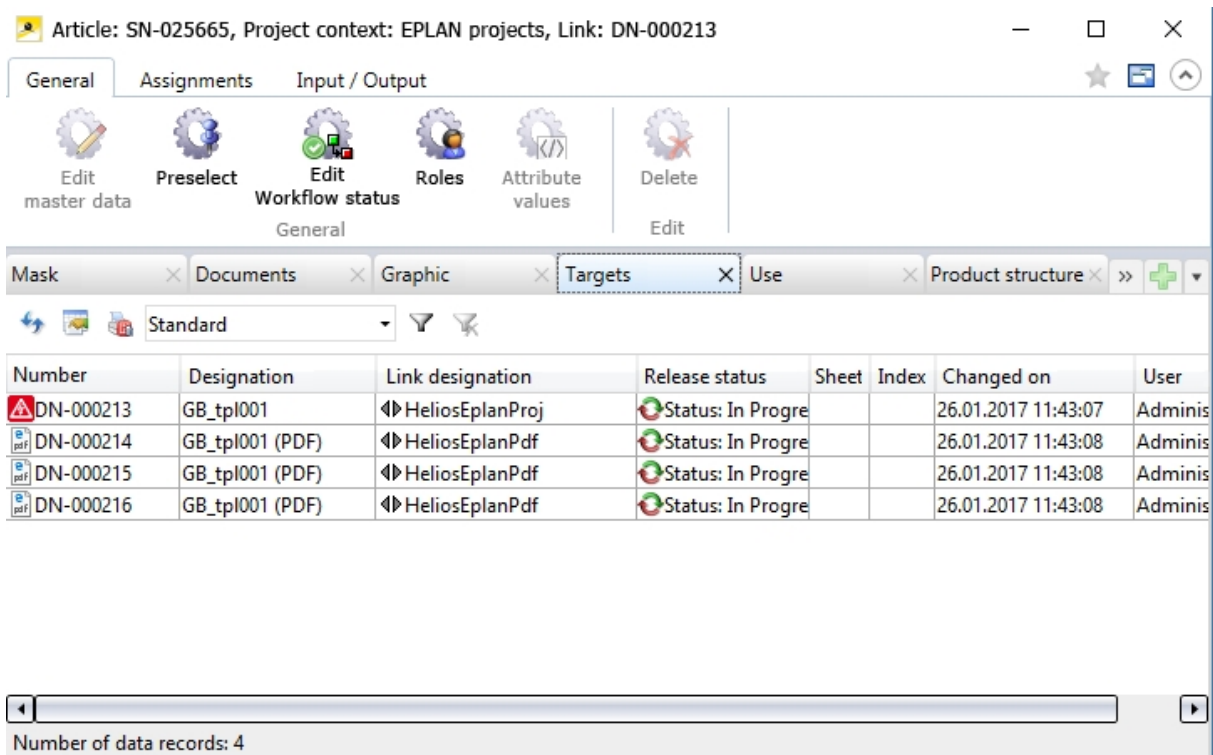
HELiOS 2017 (Version 2200) now also supports the EPLAN Versions 2.5 and 2.6.

### HELiOS preview for EPLAN projects and PDF files

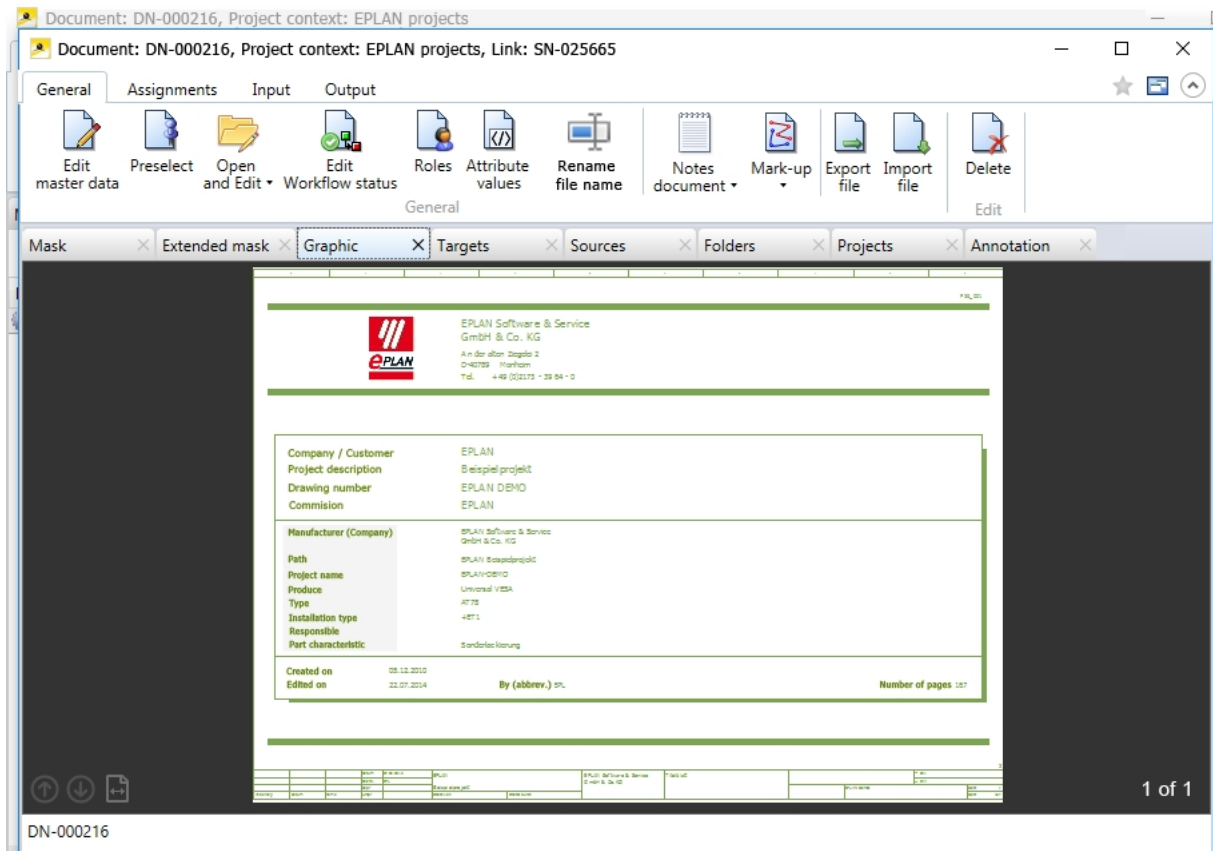
PDF files that are generated during the creation of EPLAN projects can be directly saved in HELiOS as linked HELiOS documents when the EPLAN project is checked in.



If the EPLAN project was successfully created as a HELiOS document with linked article, you can view a list of the linked PDF files on the **Targets** tab of the corresponding article detail mask in the HELiOS Desktop.



In the detail masks of the PDF documents you can then also see a preview of the EPLAN drawing frame:



For this to happen, a new link must be defined first.





**ISD Software und Systeme GmbH**

Hauert 4  
44227 Dortmund  
Germany  
Tel. +49-(0)231-9793-0  
Fax +49-(0)231-9793-101  
info@isdgroup.de

**ISD Berlin**

Paradiesstraße 208a  
12526 Berlin  
Germany  
Tel. +49-(0)30-634178-0  
Fax +49-(0)30-634178-10  
berlin@isdgroup.de

**ISD Austria GmbH**

Hafenstraße 47-51  
4020 Linz  
Austria  
Tel. +43-(0)732-9015-1800  
Fax +43-(0)732-9015-1829  
info@isdgroup.at

**ISD Hamburg**

Strawinskystraße 2  
25337 Elmshorn  
Germany  
Tel. +49-(0)4121-740980  
Fax +49-(0)4121-4613261  
hamburg@isdgroup.de

**ISD Benelux b.v.**

Het Zuiderkruis 33  
5215 MV 's-Hertogenbosch  
The Netherlands  
Tel. +31-(0)73-61538-88  
Fax +31-(0)73-61538-99  
info@isdgroup.nl

**ISD Hannover**

Hamburger Allee 24  
30161 Hanover  
Germany  
Tel. +49-(0)511-616803-40  
Fax +49-(0)511-616803-41  
hannover@isdgroup.de

**ISD Benelux b.v.**

Dokter van Deenweg 13  
8025 BP Zwolle  
The Netherlands  
Tel. +31-(0)73-6153-888  
Fax +31-(0)73-6153-899  
info@isdgroup.nl

**ISD Nürnberg**

Nordostpark 7  
90411 Nuremberg  
Germany  
Tel. +49-(0)911-95173-0  
Fax +49-(0)911-95173-10  
nuernberg@isdgroup.de

**ISD Schweiz AG**

Rosenweg 2  
4500 Solothurn  
Switzerland  
Tel. +41-(0)32-62413-40  
Fax +41-(0)32-62413-42  
info@isdgroup.ch

**ISD Ulm**

Wilhelmstraße 25  
89073 Ulm  
Germany  
Tel. +49-(0)731-96855-0  
Fax +49-(0)731-96855-10  
ulm@isdgroup.de

[www.isdgroup.com](http://www.isdgroup.com)