



# HiCAD

## HiCAD Configuration Management

Version 2016

Performance - Features - Scenarios

Date of issue: 15/11/2016

ISD Software und Systeme GmbH

[www.isdgroup.com](http://www.isdgroup.com)

THE WORLD OF CAD AND PDM SOLUTIONS

UNLIMITED PERFORMANCE





# TOC

<b>Configuration Management (CM)</b> .....	<b>5</b>
Range of features.....	6
<b>Transfer of DAT Files to the Configuration Editor (CM)</b> .....	<b>7</b>
<b>User Interface (CM)</b> .....	<b>8</b>
<b>Menu Bar (CM)</b> .....	<b>10</b>
File (CM).....	10
Export and import of setting values.....	10
Edit (CM).....	10
Derive Configuration (CM).....	11
Derive Structure (CM).....	11
View (CM).....	12
Update.....	12
Display key names.....	12
Extras (CM).....	13
Language.....	13
Database directory.....	14
<b>Toolbar (CM)</b> .....	<b>16</b>
<b>Search Function (CM)</b> .....	<b>17</b>
Search for data records.....	17
<b>User (CM)</b> .....	<b>18</b>
<b>User Management (CM)</b> .....	<b>19</b>
Settings.....	19
User.....	20
Groups.....	21
<b>Configuration Structure (CM)</b> .....	<b>22</b>
<b>Data Record (CM)</b> .....	<b>23</b>
Change a value in an input field.....	23
Select a value from a listbox.....	24
Take value from catalogue.....	24
Select a value by activating/deactivating of a checkbox.....	25
Referenced entries.....	25
Multiple value selection.....	26
Collection.....	26
IDs.....	27
Add new data record entry.....	28
<b>Permissions (CM)</b> .....	<b>30</b>
<b>Use Settings in HiCAD (CM)</b> .....	<b>31</b>
<b>Scenarios (CM)</b> .....	<b>32</b>
How do I create a user-specific configuration if I use a standalone installation? (CM).....	33
How do I create a user-specific configuration if I work within a network? (CM).....	34
How do I switch between different configurations? (CM).....	35

How do I, as an administrator, assign different rights and settings to various users? (CM).....	36
How do I transfer the settings of a user to the administrator profile? (CM).....	37
I am already a HiCAD user. What effect will an update have on my configuration settings? (CM).....	38
How do I transfer settings from HiCAD 2012 or 2014 to the Configuration Database after installing HiCAD 2014 (new installation)? (CM).....	39
What needs to be done in case of an update from a version older than HiCAD 2011 to HiCAD 2013 (or higher)? (CM).....	41
Why are suddenly new users added to the configuration management of the configuration database, and how do I prevent individual users from changing their settings? (CM).....	42
How can I combine locally saved configuration databases with different settings for individual users into one, central database without losing the settings for the individual users? (CM).....	43
Which settings have priority if administrator settings are different from user settings? (CM).....	44
How do I achieve for several workstations that the administrator profile applies to all users? (CM).....	45
Which options for the changing of settings in the ConfigDB are available in the template files (.csv)? (CM).....	46

## Configuration Management (CM)

As of Version 1700, HiCAD enables a central configuration management via the **Configuration Editor**. This tool allows the creation of customer-specific configurations for a wide range of tasks, such as dimensioning, annotation, workshop drawing creation, fitting of vertical ladders etc. Once adjusted to company-specific requirements, these configurations can directly be used in HiCAD, without having to specify any further settings.

The goal of our further developments is a gradual transfer of the previously used system files (\*.DAT) with their adjustable parameter settings into the Configuration Editor, thus enabling a central and safe configuration management.

You can find an overview of the already transferred DAT files in the topic [Transfer of DAT Files to the Configuration Editor](#) or in the PDF file [Key names.pdf](#).

If the PDF file will not be displayed in the Internet Explorer, use a different browser , or right-click on the link and select **Save target as**.

Various information contained in the Online Help of the Configuration Management can also be found in the PDF file [ISD-Configuration.pdf](#).

## Range of features

- **Hierarchical management of configuration data in the form of module properties**

Settings are assigned to modules and sub-modules in a tree-like structure, and represent properties defining the **Behaviour** of a module. The categorization facilitates the retrieval of individual settings.

- **Central data storage**

The configuration data are centrally stored in a database file in a defined location within the user system, which enables an easy backing up, restoring or copying of data.

- **User-specific data storage**

The property definitions are stored separately from the actual user settings. This allows a working in multi-user environments while eliminating the risk that a user accidentally manipulates the configuration of other users.

- **Derived configurations**

Configuration Management allows, in addition to the basic configuration supplied by the ISD, the utilisation of further, derived configurations for a definition of company- and/or team-specific settings. Furthermore, you have the option to offer to users alternative configurations within one derivation level.

- **Central administration of settings via one common graphical Configuration Editor**

The need for time-consuming and error-prone manipulations in configuration files is eliminated. The integrated validation of setting values by ranges and selection lists minimizes the risk of incorrect configurations and system crashes due to invalid values.

- **Documentation of settings**

Each setting has a multi-language short description and comments on the meaning of the setting values. The Configuration Editor offers a full text search for property names, descriptions and comments.

- **Update-ability of the database**

The data storage in the form of user profiles enables an updating of underlying pre-settings, without having to change existing user settings. Values that have not been changed by the user will automatically be assigned the updated pre-settings.



Please note that the scope of functions available to you depends on the configuration level of your product, i.e. not all the functions described in the Help may be available in your product!

The range of selectable modules for a local license depend on the license that was purchased.



## Transfer of DAT Files to the Configuration Editor (CM)

As of Version 1700, HiCAD enables a central configuration management via the **Configuration Editor**. This tool allows the creation of customer-specific configurations for a wide range of tasks, such as dimensioning, annotation, workshop drawing creation, fitting of vertical ladders etc. Once adjusted to company-specific requirements, these configurations can directly be used in HiCAD, without having to specify any further settings.

The goal of our further developments is a gradual transfer of the previously used system files with their adjustable parameter settings into the Configuration Editor, thus enabling a central and safe configuration management.

This transfer has already been realised for the following files:

- ALGPAR.DAT (as of 1800.0)
- BEMPAR.DAT (as of 1800.0)
- DIMENSIONING\_SETTINGS.XML (as of 1800.0)
- STBEMPAR.DAT (as of 1801.0)
- KRPGEN.DAT (as of 1801.0)
- MASPAR.DAT (as of 1801.1)
- FITTABLE\_SETTINGS.XML (as of 1801.0)
- TXTANSI.DAT (as of 1801.1)
- STABMPAR.DAT (as of 1802.0)
- AUBM3PAR.DAT (as of 1802.0)
- ALG3DPAR.DAT (as of 1901.0)
- SCHRIF.DAT (as of 1901.0)
- TXTFONT.DAT (as of 1901.0)
- FEATURE.DAT (as of 1901.0)
- LINPAR.DAT (as of 1901.0)
- SSWRITESTEP.DAT (as of 1901.0)
- NORM.DAT (as of 2000.0)
- PASSTAB.DAT (as of 2000.0)
- PASSTAB0.DAT (as of 2000.0)
- ANSGEN.DAT (as of 2100.0)
- PARAMASS.DAT (as of 2101)
- SSTINI3D.DAT (as of 2102)
- SSTINI.DAT (as of 2102)
- STB\_PARAMETER.DAT (as of 2102)

The settings from the files were transferred to the Configuration Editor. The linked lists or the PDF file shows you where to find the settings from the DAT files in the Configuration Editor (Key names).

Key names.PDF

If the PDF file will not be displayed in the Internet Explorer, use a different browser , or right-click on the link and select **Save target as**.

Various information contained in the Online Help of the Configuration Management can also be found in the PDF file ISD-Configuration.pdf.

## User Interface (CM)

The Configuration Editor enables an editing and managing of configuration. It provides a generic, hierarchical view of the data and structures contained in the database.

You start the Configuration Editor outside of HiCAD, by executing the file ISDCONFIGEDITOR.EXE in the EXE directory of HiCAD.

The permissions to change profiles or settings depend on the behaviour of the Editor when it is started:

Users without administrator rights and users with administrator rights who did not select the **Run as administrator** option upon start:

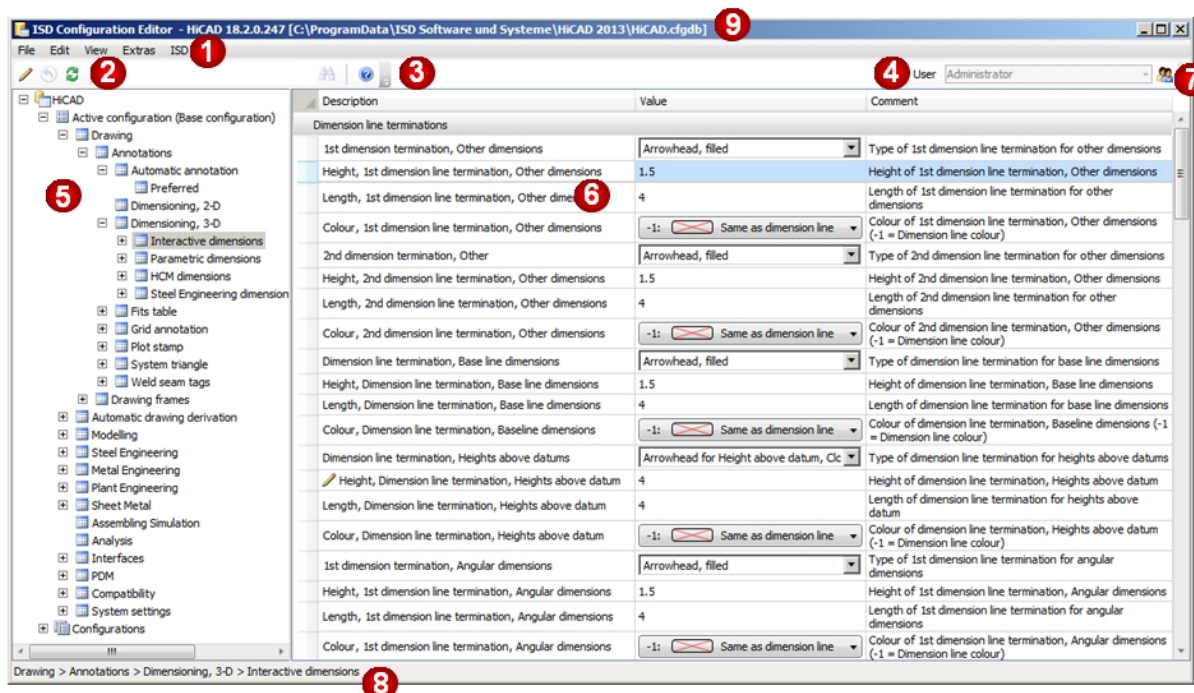
- In the Editor, settings can be edited in the profile of the user who is currently logged on Windows.
- The switching to a different user is not possible. The selection box is greyed out.

Users with administrator rights who have selected the **Run as administrator** option (right-click and select from context menu) upon start:

- The administrator profile can be changed in the Editor.
- The switching to other existing profiles is possible via the selection box, which enables a checking and/or changing of the configurations of various users.

You can also start the Configuration Editor directly from HiCAD: At the top right corner of the HiCAD window, select **Settings > Configuration**.

You require administrator rights to start the Configuration Editor!



The user interface of the Configuration Editor consists of the following areas:

1. Menu bar
2. Toolbar
3. Search function
4. User selection
5. Current configuration structure tree



6. Data record of active configuration
7. User Management
8. Path of the currently selected structure item
9. Version and name of the configuration database



**Important:**

Changes in the Configuration Editor will only take effect after you re-start HiCAD. Only some particular settings, such as dimensioning pre-settings, can be applied, via the corresponding HiCAD functions, without a re-start.

## Menu Bar (CM)

The menu bar of the Configuration Editor contains the following menus:

- File
- Edit
- View
- Extras



### Please note:

Some of the function in the menus will only be active when a data record has been selected in the right pane of the window.

## File (CM)

### Export and import of setting values


The structure and the values of the configuration can be written to a XML file with the **Export** function. The export function refers to the currently selected item in the configuration tree. The exported settings can then be imported, for example, to another configuration database.

## Edit (CM)

The configuration database administers values on the basis of user-specific setting profiles.

When you select a data record in the tree structure in the left pane of the dialogue window, the corresponding settings will be displayed in the right pane of the window. You can use the functions of the **Edit** menu to modify these values and the tree structure.

The changes will take effect after you re-start HiCAD.

Function	Description															
Change	<p>If you want to change a value in a data record, activate the desired item and select <b>Change</b>.</p> <table><tr><th>Description</th><th>Value</th><th>Comment</th></tr><tr><td>Distance for outer dimensioning</td><td>8</td><td>Switch to outer dimensioning if distance is smaller</td></tr><tr><td>Excess length for ext. dimensioning</td><td>1.5</td><td>Dimension line excess length for outer dimensions</td></tr><tr><td>Minimum dimension line length</td><td>12</td><td>Minimum length of dimension line</td></tr><tr><td>Maximum dimension line length</td><td>50</td><td>Maximum length of dimension line</td></tr></table> <p>You can also activate the value via double-click or by pressing the <b>F2</b> key, and then overwrite it.</p> <p>Changed values, i.e. values deviating from the underlying profile level, are marked appropriately and can be reset to the original default value at any time.</p>	Description	Value	Comment	Distance for outer dimensioning	8	Switch to outer dimensioning if distance is smaller	Excess length for ext. dimensioning	1.5	Dimension line excess length for outer dimensions	Minimum dimension line length	12	Minimum length of dimension line	Maximum dimension line length	50	Maximum length of dimension line
Description	Value	Comment														
Distance for outer dimensioning	8	Switch to outer dimensioning if distance is smaller														
Excess length for ext. dimensioning	1.5	Dimension line excess length for outer dimensions														
Minimum dimension line length	12	Minimum length of dimension line														
Maximum dimension line length	50	Maximum length of dimension line														
Reset	This function restores the selected value to the state in the database.															
Copy key	Use this function to copy the names of the marked key values in the right window, for example, to a TXT file.															
Rename	Use this function to rename derived structures and derived configurations in the tree structure. The derived structure will be identified by the  icon.															
Delete	This function deletes only <b>derived</b> structures and <b>derived</b> configurations in the left pane of the															

Function	Description
	Configuration Editor.
<b>Derive structure</b>	Use this function to copy the selected branch in the tree structure and paste it with a different name.
<b>Select reference</b>	If a referenced structure has been activated, this function activates the reference.
<b>Activate configuration</b>	<p>The 2nd level of the tree structure in the left pane of the Configuration Editor consists of the areas:</p> <ul style="list-style-type: none"> <li>■ <b>Active configuration</b> and</li> <li>■ <b>Configurations.</b></li> </ul> <p>The configuration that you activate with this function will be displayed in the <b>Active configuration</b> area and can then be modified.</p>
<b>Derive configuration</b>	<p>Use this function to derive an alternative, complete configuration.</p> <p>Here, too, the same principle as for structure derivation applies: Unchanged settings inherit their values from the default values (ISD or Administrator profile) of the superordinate configuration.</p> <p>To edit the derived configuration, select <b>Activate configuration</b>.</p>

### Derive Configuration (CM)

Derived configurations have a tree-like structure and function according to the same principle as the overlaying of values in user profiles, i.e. unchanged settings will inherit their values from the default values (ISD or Administrator profile) of the superordinate configuration. Configurations on the same derivation level are independent from each other.

To derive configurations, select **Edit > Derive configuration**. Derived configurations will be displayed in the left pane of the window, under **HiCAD > Configurations**. The derivation will be created from the currently active configuration.

To edit a derived configuration, select **Edit > Activate configuration**. The derived configuration will then be displayed under **HiCAD > Active configuration** and can be edited.



#### Important:

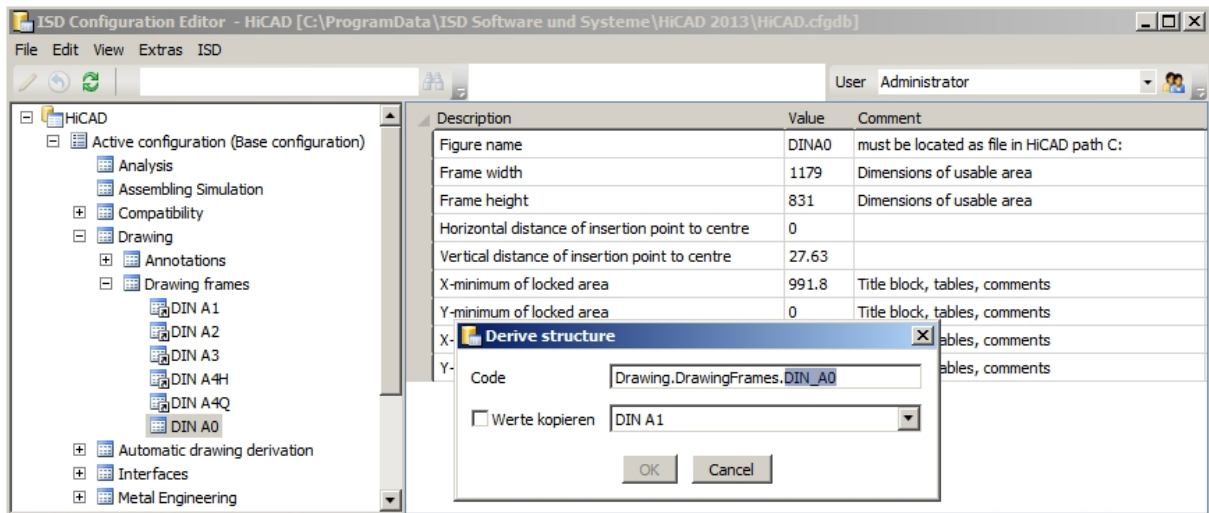
To prevent an accidental overwriting of the base configuration, i.e. the ISD default setting, you should only create derivations of company-specific configurations. To restore the ISD default settings, the configuration database (HiCAD.cfgdb) must be re-installed.

### Derive Structure (CM)

Referenced and derived structures generate value inheritance lines. This enables you to create tree units (or individual settings) that refer to a reference tree unit and obtain unchanged values initially from the default values of the reference.

Example: Creation of a new drawing frame for workshop drawings

1. In the tree structure, select ... > Drawings > Drawing frames > DIN\_A0. Then select **Edit > Derive structure**.



2. Change the displayed key to Drawings.Drawing frames.DIN\_A5.

The structure DIN\_A5 that will be created now will initially inherit all values from the reference structure DIN\_A0. This means that if one of the default values of DIN\_A0 will be changed, this value will also change for DIN\_A5. The values of DIN\_A5 can be assigned new default values. If a default value in the derived structure has been changed, the value from the reference structure will no longer be inherited, i.e. changes of the corresponding value in the reference structure will no longer affect the derived value.

Use the **Copy values** option to take over changed values from a data record that is linked to DIN\_A0, e.g. DIN\_A3.



Updates of the reference structure containing new or deleted settings will be adopted by the derived structure.

## View (CM)

### Update

If you change the configuration settings in HiCAD while the Configuration Editor is open, the new settings will only be displayed after activating the **Update** function.

Example:

When saving the rules set, the rules will be transferred to the Configuration Editor. The rules which are stored there will be adjusted accordingly, new rules are added, or existing rules are deleted if required. After selecting **Update**, the changes will become visible in the Configuration Editor.



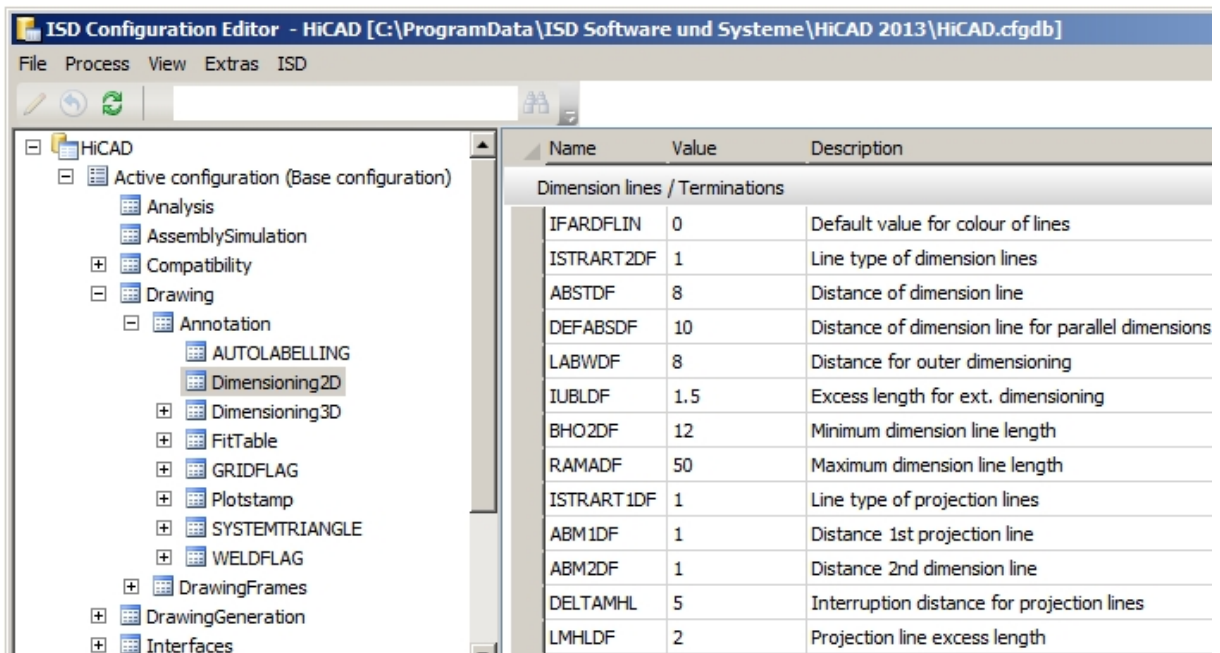
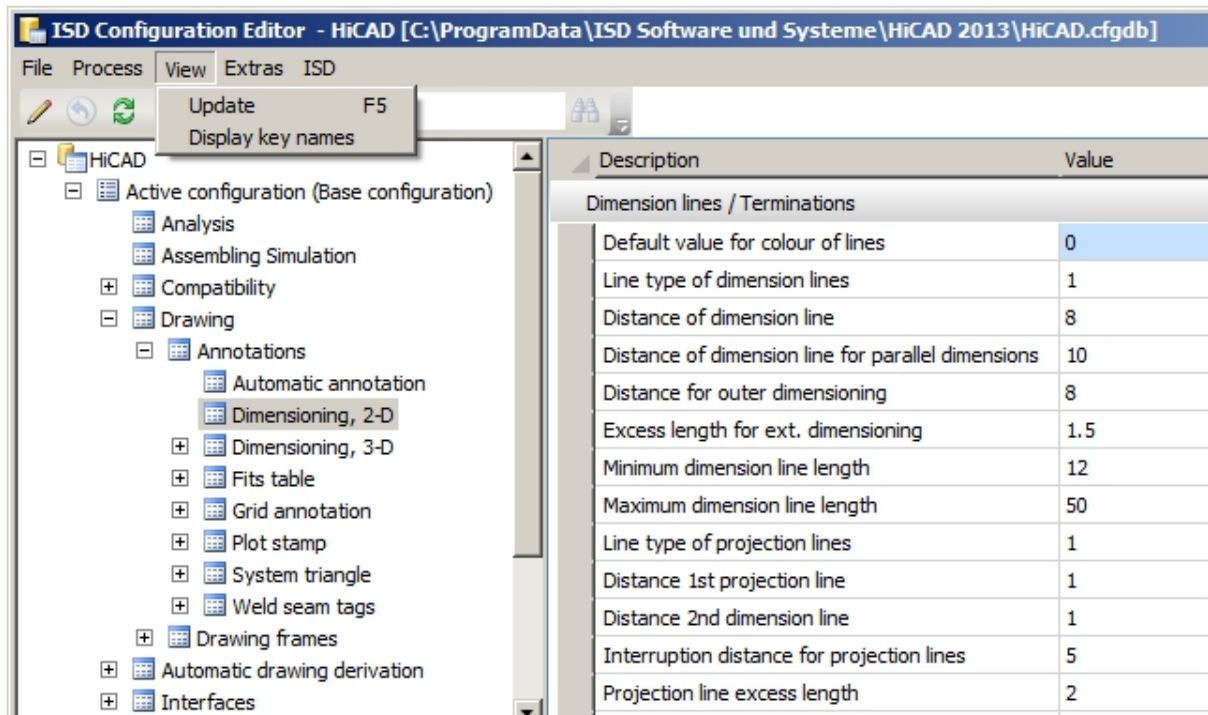
Please note that HiCAD will apply the changes from the configuration management only after restart.

### Display key names

HiCAD uses the key name to access the settings of the configuration management. The key name is identical in all languages.

A description of this name is displayed in the standard view.

## Example

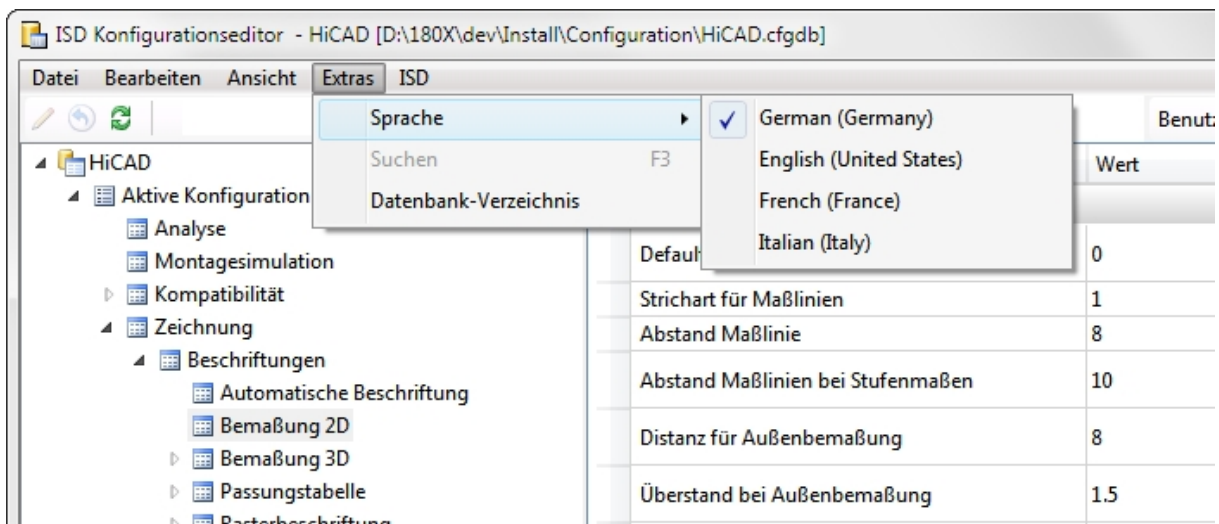
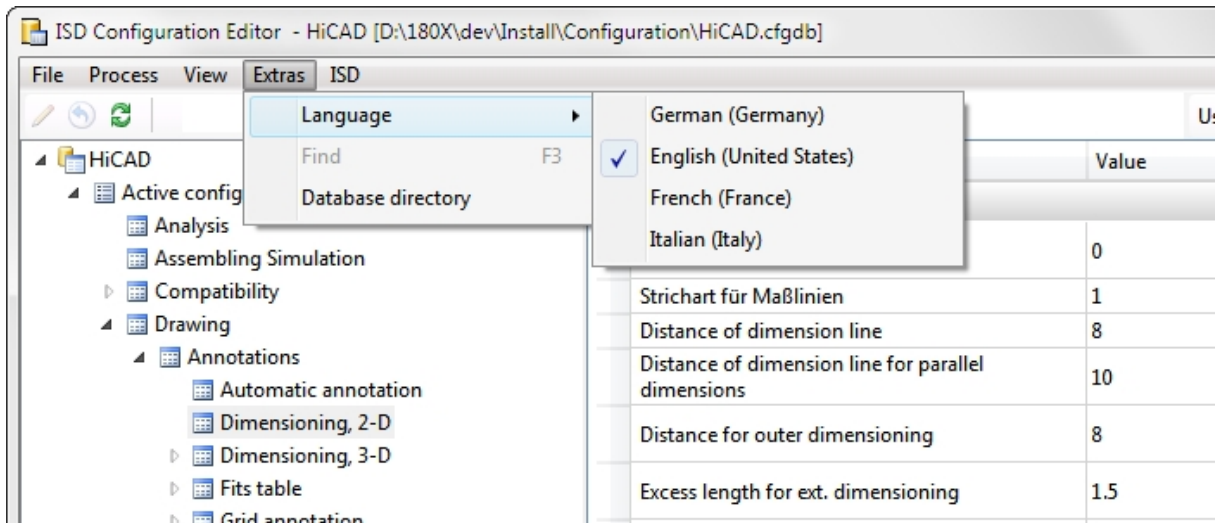


## Extras (CM)

## Language

You can currently select between English and German.

## Example



## Database directory

For a HiCAD standard installation the database of the Configuration editor will be stored in the HiCAD installation directory, at ...\\Configuration\\HiCAD.cfgdb.

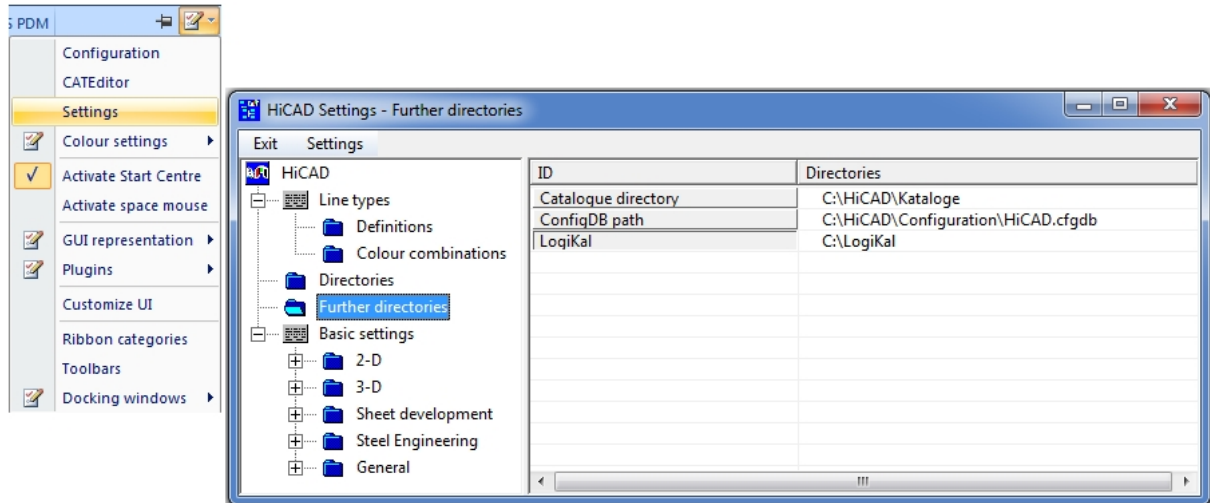
The location of the database file will be entered into the Windows Registry at

HKEY\_LOCAL\_MACHINE\\SOFTWARE\\ISD SOFTWARE UND SYSTEME\\HiCAD\\[VERSION NUMBER]\\HiCAD.CFGD

To change the directory for the file, select **Extras > Database directory**. If you want to copy the database to the new location, activate the same-named checkbox.








You can also change the path in HiCAD via **Settings > Further directories**. Before you do so, you need to copy the database to the new directory.





## Toolbar (CM)

To enable a quick access, some of the functions of the menu bar are also contained in the toolbar:

	<b>Change</b>	If you want to change a value in a data record, activate the desired item and select <b>Change</b> .
	<b>Reset</b>	This function restores the selected value to the state in the database.
	<b>Update</b>	If you change the configuration settings in HiCAD while the Configuration Editor is open, the new settings will only be displayed after activating the <b>Update</b> function.
	<b>Collapse all</b>	This function collapses the structure display of the Configuration Editor and shows only the 1st level.
	<b>Expand 2 levels</b>	Shows you the first 2 levels of the configuration structure.
	<b>Expand 3 levels</b>	Shows you the first 3 levels of the configuration structure.
	<b>Expand all</b>	Expands the complete structure display of the Configuration Editor.

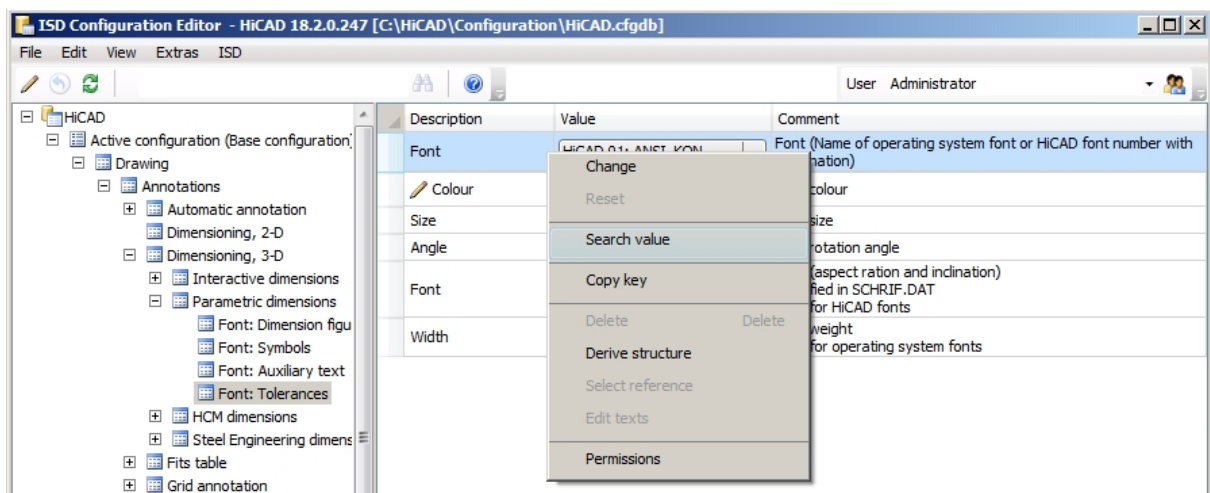
## Search Function (CM)

The Configuration Editor offers a full text search for value descriptions, comments and setting names. During the process, the Editor browses through the structure, beginning (or continuing) at the currently selected node of the configuration tree. Enter the desired search term and click the **Find** icon.

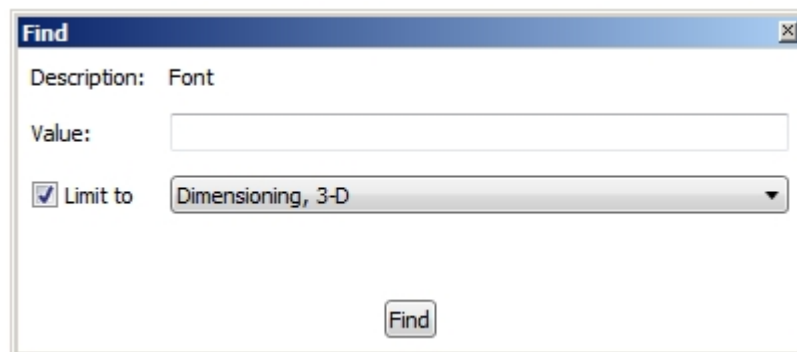


### Search for data records

To perform a targeted search for particular entries (e.g. font or font size) in other data records, right-click the desired data record and select **Search value**.



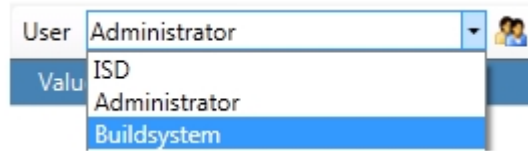
In the search mask you can limit the search to a particular area of the configuration structure tree, by activating the **Limit to** checkbox and selecting the area of the configuration structure from the drop down menu.



When you click the **Find** button, HiCAD will jump to the next data record that meets the specified search criteria. You can change this data record if desired, and continue your search.

## User (CM)

The configuration database manages values on the basis of user-specific setting profiles. Two pre-defined profiles, namely **ISD** and **Administrator**, have a special function.



The ISD profile forms the basis for the settings. In this profile, the HiCAD settings preset by the ISD are contained.

The Administrator profile allows the creation of company-wide default settings deviating from the ISD defaults. In the process, the Administrator profile constitutes a level overlaying the ISD profile: Unchanged values will be read from the ISD profile, so that changes of the ISD settings will automatically be transferred to the Administrator profile (and thus also to the superordinate user profiles) when being updated. Modified, company-specific values will however be retained.

Profiles of other users overlay the Administrator profile according to the same principle, with each user profile being independent of the other user profiles. If setting values are written from HiCAD into the database, this process will always be performed via the profile of the user name currently logged on to Windows. In this way, an accidental changing of user settings, company-wide settings, or ISD default settings by other users via HiCAD will be prevented.

The permissions to change profiles or settings depend on the behaviour of the Editor when it is started:


- Users without administrator rights and users with administrator rights who did not select the **Run as administrator** option upon start:
  - In the Editor, settings can be edited in the profile of the user who is currently logged on Windows.
  - The switching to a different user is not possible. The selection box is greyed out.
- Users with administrator rights who have selected the **Run as administrator** option (right-click and select from context menu) upon start:
  - The administrator profile can be changed in the Editor.
  - The switching to other existing profiles is possible via the selection box, which enables a checking and/or changing of the configurations of various users.

To edit an entry, double-click a cell in the **Value** column, or select a cell and press the **F2** key, or click the **Change** icon on the Toolbar.


Changed values, i.e. values deviating from the underlying profile level, are marked appropriately and can be reset to the original default value at any time.

## User Management (CM)

The integrated User Management allows the creation and deletion of user profiles, as well as the deletion or the taking over of user-specific values into other user profiles. In this way, for example, an Administrator is enabled to specify settings via HiCAD managed in the Configuration Editor. These are initially saved in his/her Windows user profile, and can later be taken over to the administrator profile as company defaults, and will then apply to all users.

Click the  icon to call the User Management. The dialogue window is composed of the following tabs:

- Settings
- User
- Groups

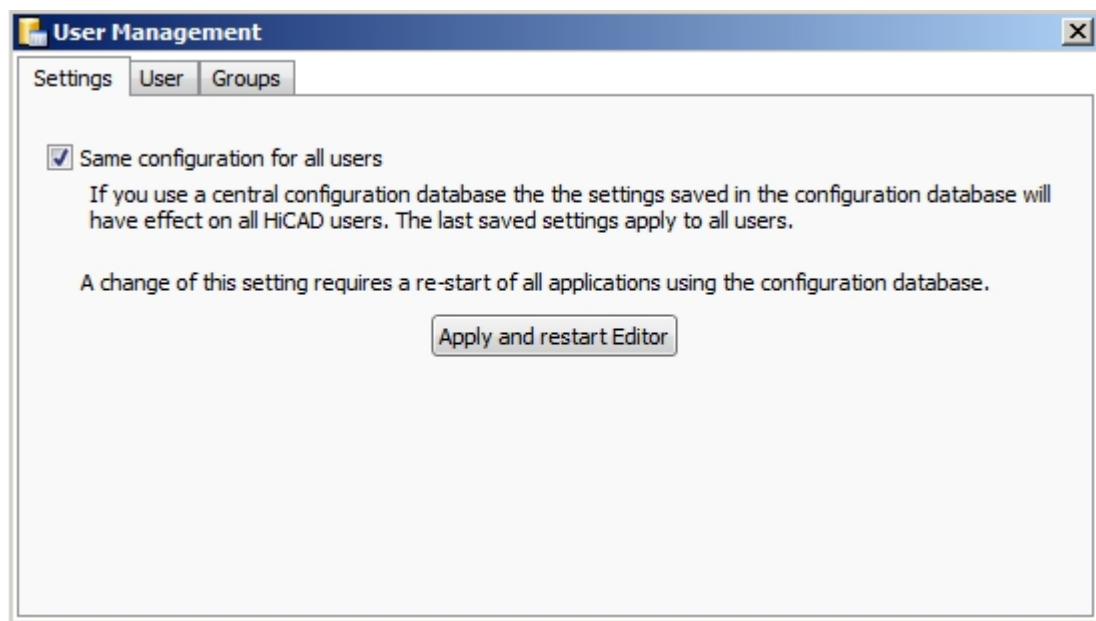
Click the  icon to close the dialogue window.



### Important:

The permissions to change profiles or settings depend on the behaviour of the Editor when it is started.

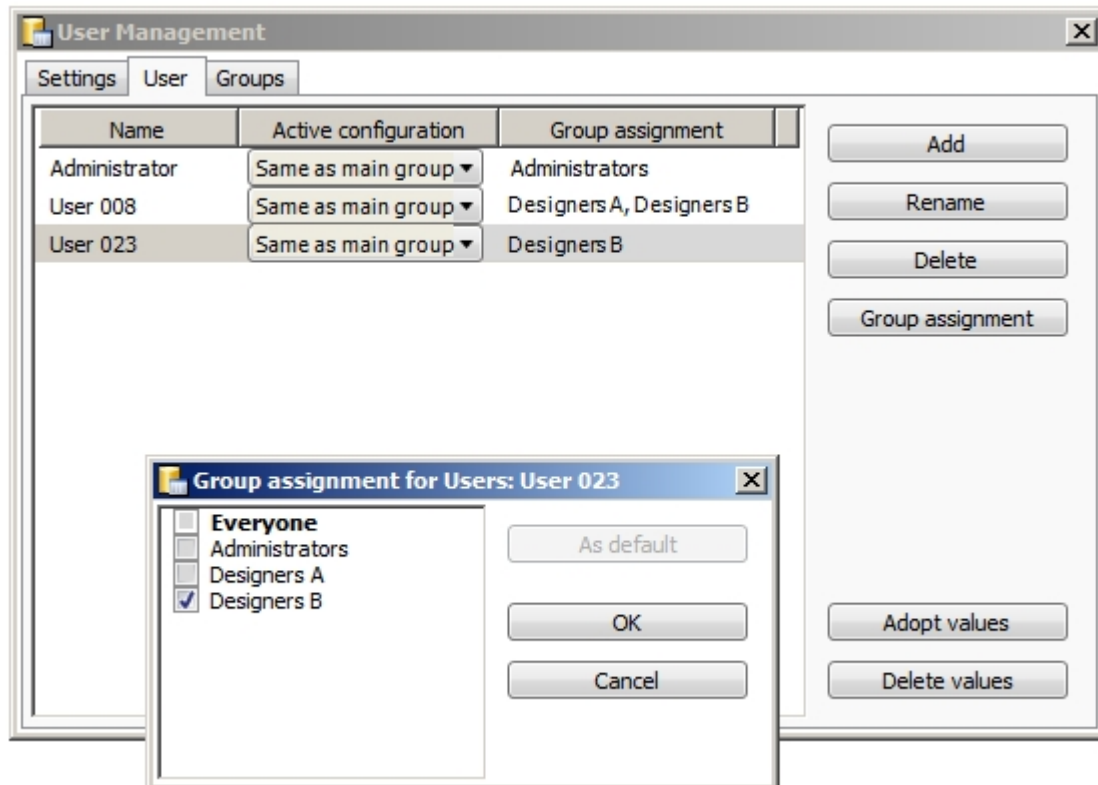
## Settings



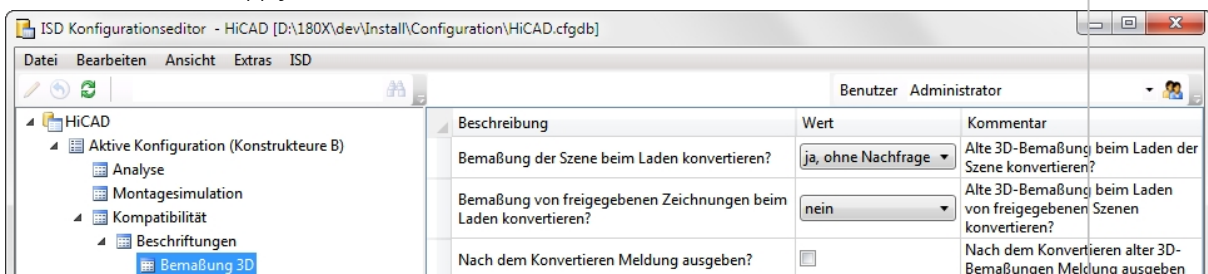
Activate the **Same configuration for all users** checkbox to switch off the User Management and the Permissions Management. The settings will then always be written to the Administrator profile.

The User Management is by default deactivated when the configuration database is installed for the first time.

## User



User tab	
<b>Add</b>	Adds a new User to the table.
<b>Rename</b>	Enables you to change a selected User name.
<b>Delete</b>	Deletes the selected User without any further confirmation prompt.
<b>Group assignment</b>	The user rights are controlled via group assignments. A User can belong to several Groups. Use the <b>Group assignment</b> button to select Groups for Users. The main Group of the User will be highlighted if you mark this Group and then click the <b>As default</b> button. The main Group will be available during the configuration selection of the User. Click <b>OK</b> to exit the Group selection.
<b>Adopt values</b>	Use this function to apply the values of a selected User to the active User.
<b>Delete values</b>	Deletes the changed values of the selected User, thus restoring the values to that of the administrator profile / the values preset by the ISD.
<b>Table column: Active configuration</b>	The Configuration Editor allows the creation of different user configurations via the <b>Derive configuration</b> function. One of these configurations and the Base configuration can be assigned to the User in the <b>Active configuration</b> column.

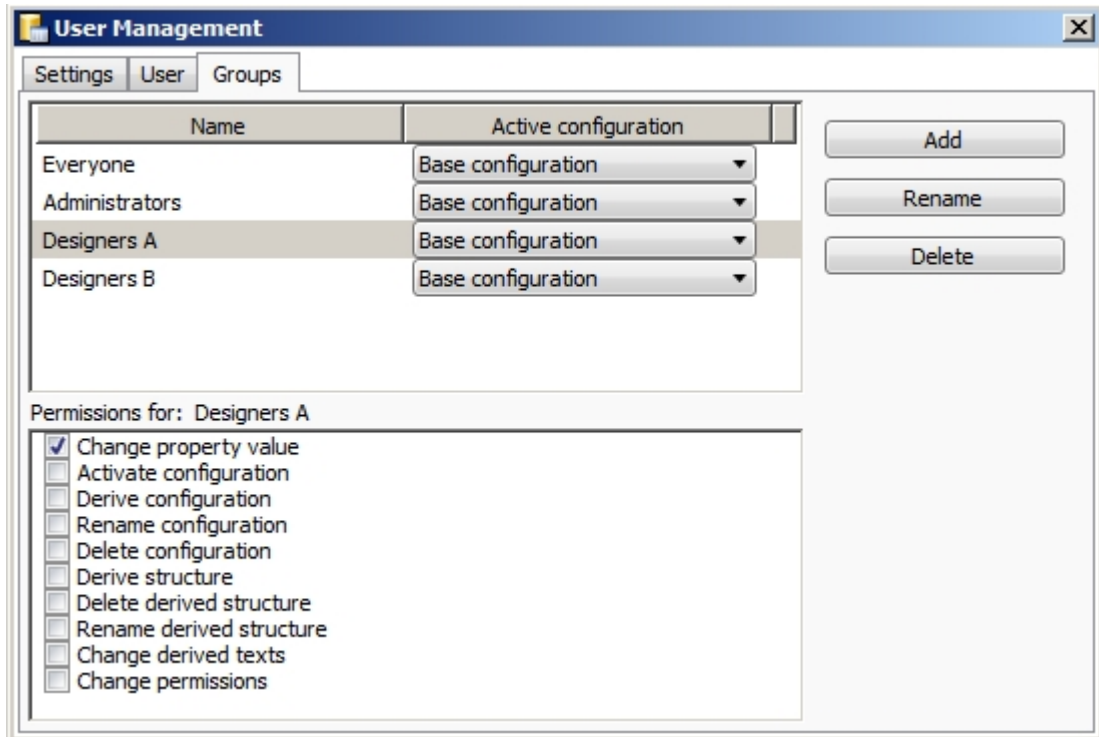




**Please note:**

HiCAD will use the Windows Login name in case of an utilisation via HiCAD, i.e. these names need to match when users are created.

## Groups



Group tab	
<b>Add</b>	Adds a new Group to the table.
<b>Rename</b>	Enables you to change a selected Group name.
<b>Delete</b>	Deletes the selected Group without any further confirmation prompt.
Table column: <b>Active configuration</b>	The Configuration Editor allows the creation of different user configurations via the <b>Derive configuration</b> function. One of these configurations and the Base configuration can be assigned to the Group in the <b>Active configuration</b> column.
<b>Permissions for:</b> e.g. Designers A	<p>The rights of a Group can be specified in the <b>Permissions for: ...</b> area, by activating the corresponding checkboxes. If a User belongs to several Groups, the activated rights of these additional Groups are also available to him/her.</p> <p>The permissions enable you to specify, for example, that a User can only read the settings defined by the administrator, but not define and save his/her own settings, thus ensuring company-wide, identical settings.</p>

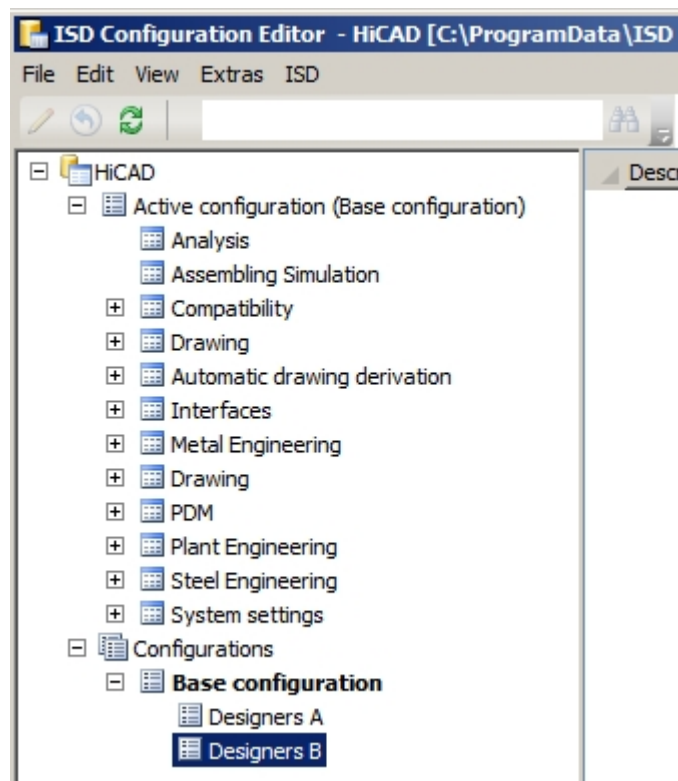
**Please note:**

- The permissions that are assigned here apply globally, i.e. for all Users of the Group.
- Use the **Permissions** function if you want to assign permissions for sub-trees of the configuration. You can then define permissions for Users and Groups .

## Configuration Structure (CM)

The left pane of the Configuration Editor dialogue window contains the following entries (below HiCAD):

- **Active Configuration** and
- **Configurations**.



Under **Active configuration** you will find the current HiCAD settings.

Under **Configurations** you can find the base configuration and all derived configurations of the active user. Use the **Derive configuration** function to load data into the **Active configuration** area. There, you can activate individual data records and edit them in the right pane of the dialogue window.



### Important:

To prevent an accidental overwriting of the base configuration, i.e. the ISD default setting, you should only create derivations of company-specific configurations. To restore the ISD default settings, the configuration database (HiCAD.cfddb) must be re-installed.

## Data Record (CM)

In the right pane of the Configurator Editor you can edit the data records that you activate in the left pane of the window. The data record consists of the **Description**, the **Value** and the **Comment**. When you display the key name via **View > Display key names**, the system name of the entry will be additionally displayed.

You define your individual profile for HiCAD via the setting of values. The values are not always numerical values. They may also be:

- a unit of measurement (mm, cm, ...)
- a string ("Collection")
- a key name
- a free entry
- a checkmark (e.g. to activate the display of a query etc.)
- a procedure (Always, Dependent on dimension plane, etc.)
- an entry from the Catalogue Editor
- a selection of attributes.

Changed values, i.e. values deviating from the underlying profile level, are marked appropriately and can be reset to the original default value (right-click and select **Reset**) at any time.

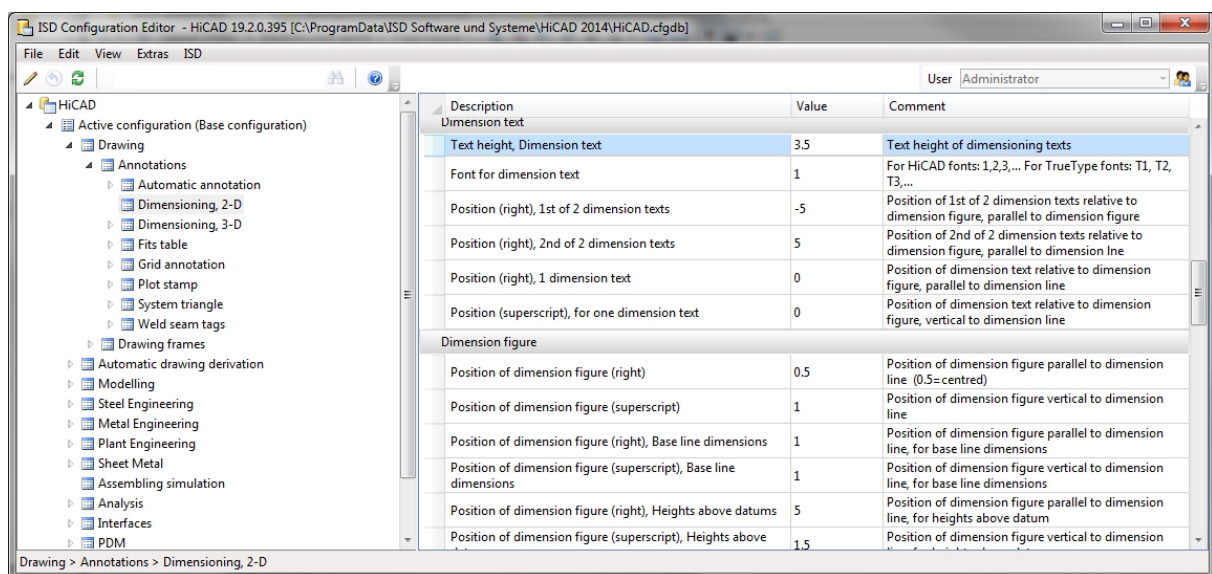
Some data records can be expanded by new data record entries.



### Important:

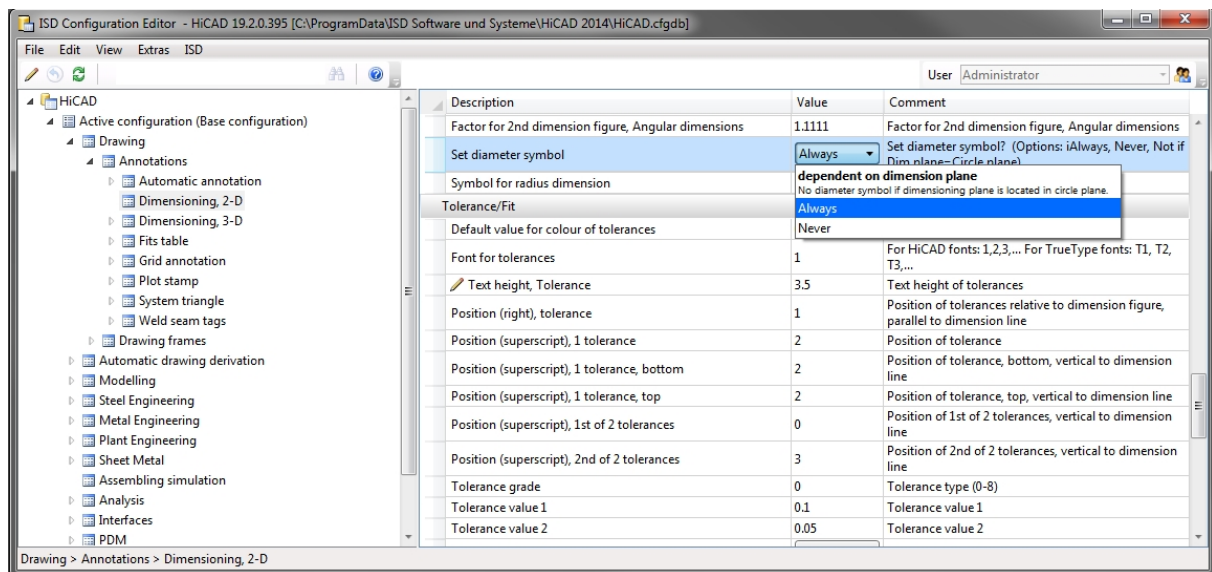
- Changes made in the Configuration Editor will only take effect after restarting HiCAD.
- To prevent an accidental overwriting of the base configuration, i.e. the ISD default setting, you should only create derivations of company-specific configurations. To restore the ISD default settings, the configuration data-base (HiCAD.cfgdb) must be re-installed.

## Change a value in an input field



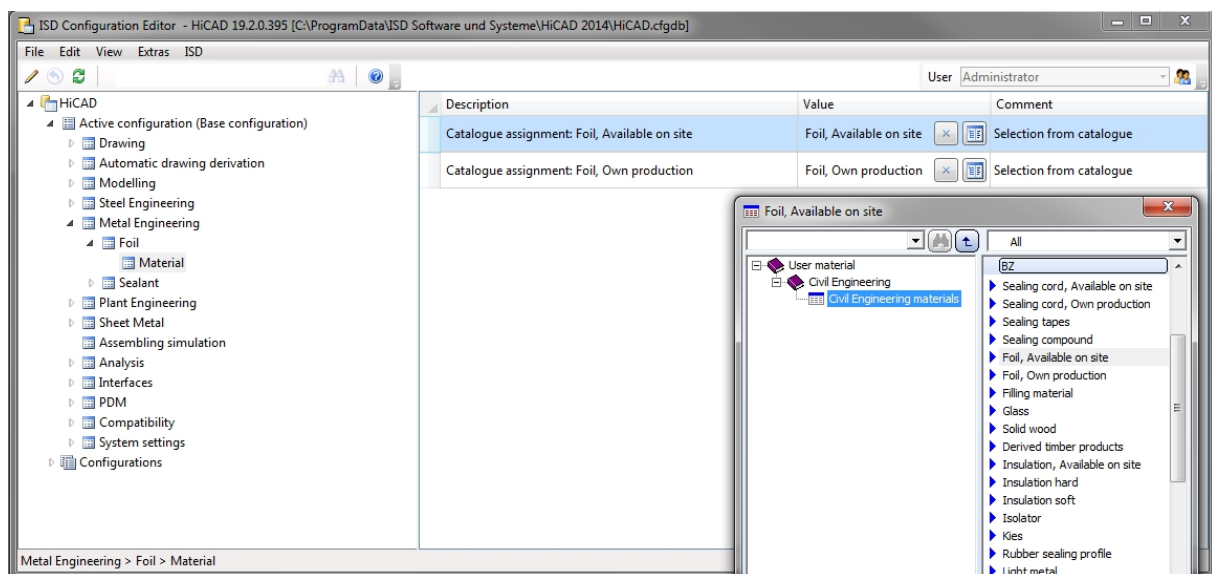
If you want to change the value of a data record, right-click the corresponding row and select **Change**. You can also double-click the row, or press **F2**, and then overwrite the value.

## Select a value from a listbox



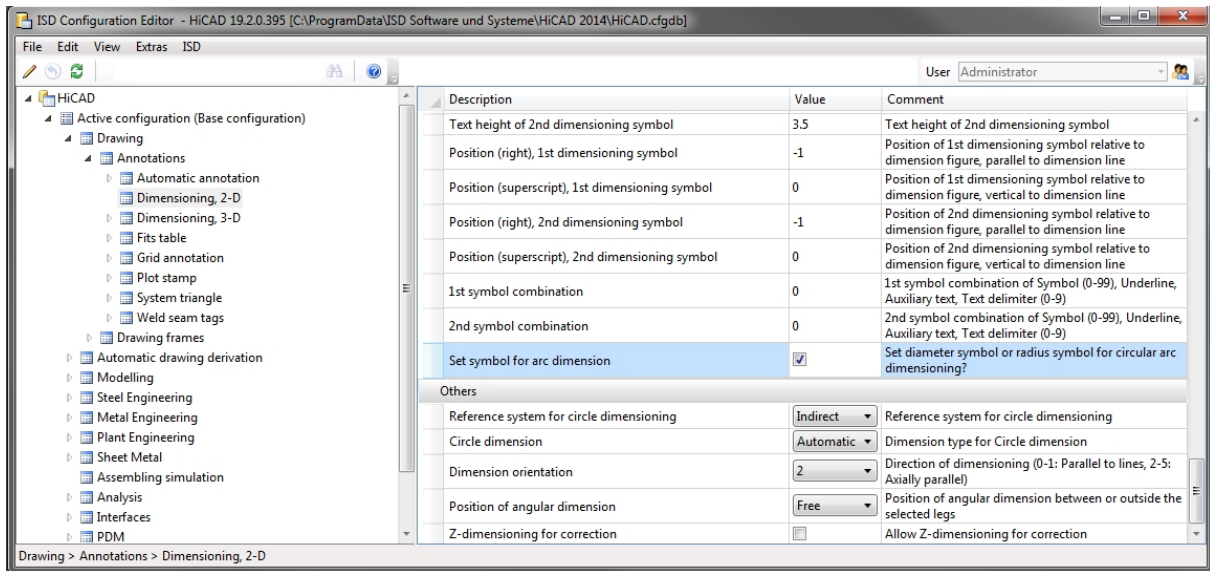
Some settings are selected from a listbox.

## Take value from catalogue



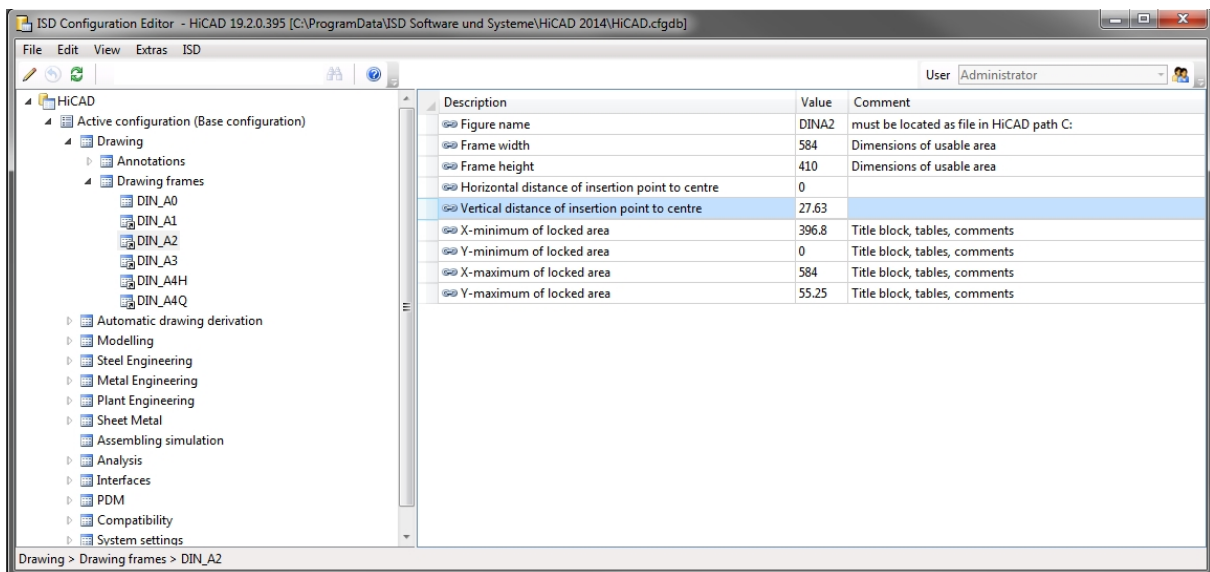
Click the  symbol to select a value from the Catalogue Editor. Click the  symbol to delete the setting again.



## Select a value by activating/deactivating of a checkbox



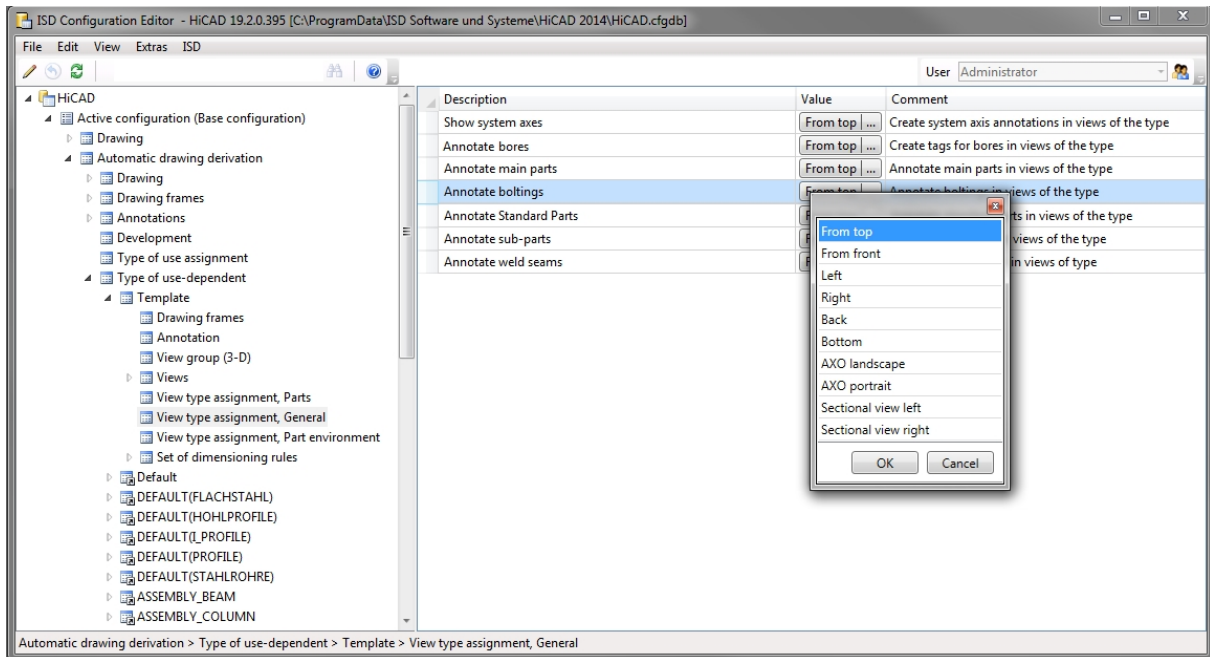
Some settings can be selected via activation or deactivation of a checkbox. In this example the user has activated the setting of a symbol (e.g. a diameter symbol) for circular arc dimensions.

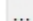
## Referenced entries



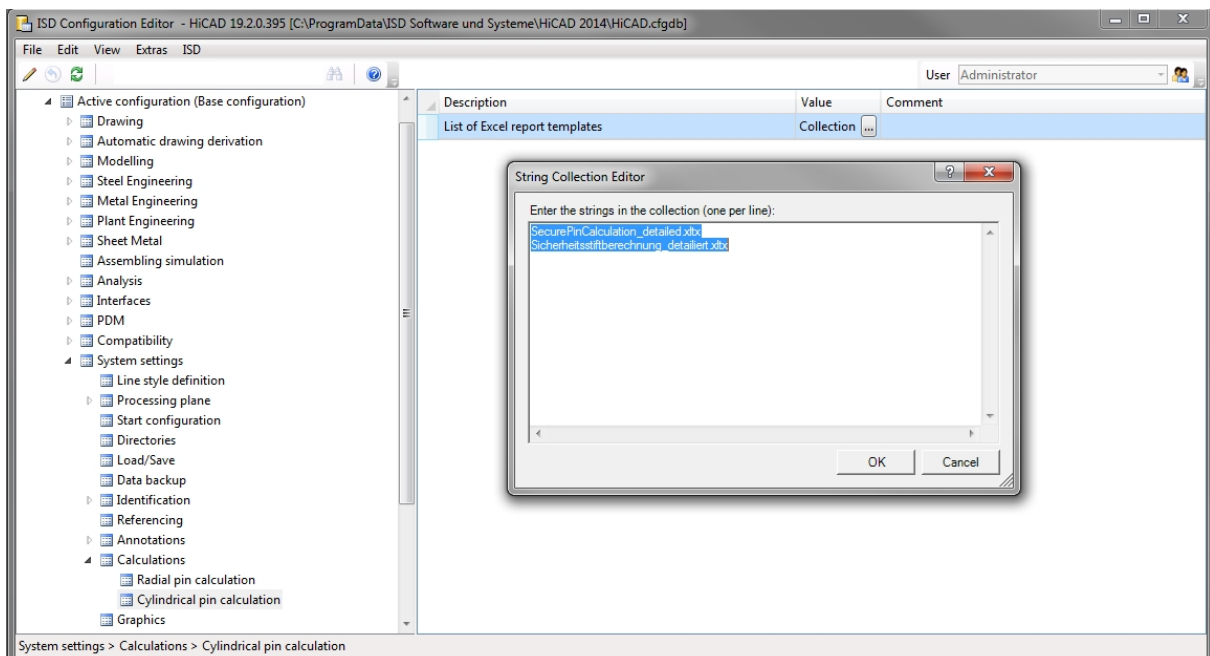
In the tree structure, derived data records are marked with the  symbol. The referenced entry in the right window is marked with the  symbol. If you change a referenced value, the referencing will be removed, and the changing of the value will have no further effects any more.


## Multiple value selection



Some parameters allow a multiple value selection. Click the  icon and select a combination of values from the displayed list. Click **OK** to close the list. In the above example the position of an annotation tag for a bore is specified via a multiple selection.

## Collection

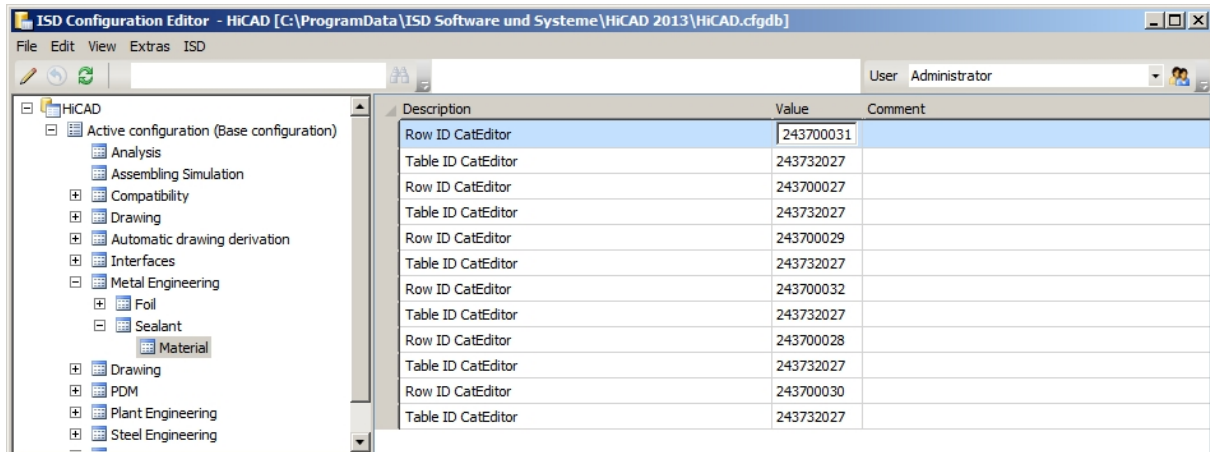


If you are asked for a Collection you can select a template file. Click the  icon and edit the template files in the displayed list.

To create your own template files, just copy one of the templates supplied by the ISD and adjust it according to your individual needs. Save the templates to the HiCAD directory templates/... to enable them to be displayed in the Configuration Editor.



## IDs



These are values that refer to other HiCAD files, e.g. tables in the HiCAD catalogues.

In the above example the values (IDs) refer to the table **Factory standards > User-defined materials > Civil Engineering > Civil Engineering materials** in the Catalogue Editor. This table has the ID 243732027.

In the Configuration Editor the ID entries in the rows determine the selection for the **Sealing** function. You can select between the Type (Own production or Available on site), and the Material (Foil, Acrylic, Silicon, Sealing cord).

243700039 > Foil, Available on site

243700038 > Foil, Own production

243700031 > Acrylic, Available on site

243700032 > Acrylic, Own production

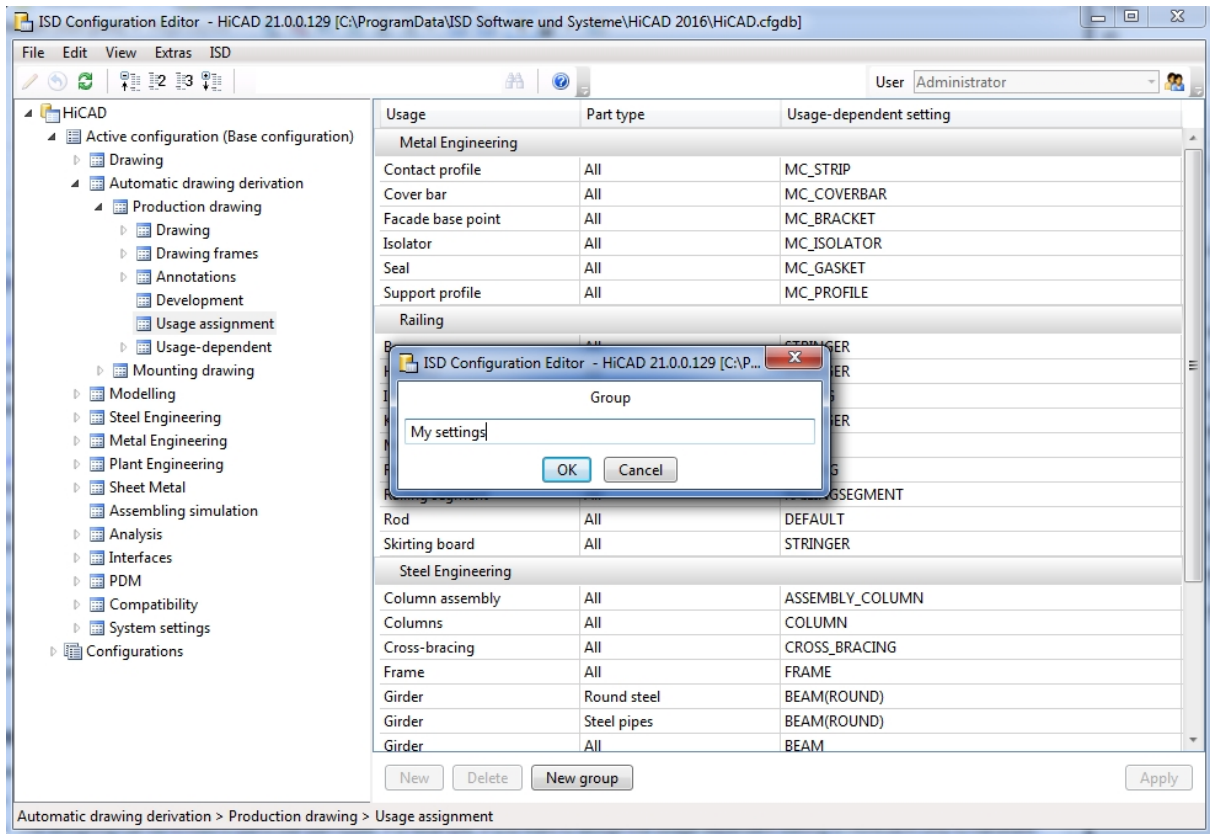
243700029 > Silicon, Available on site

243700030 > Silicon, Own production

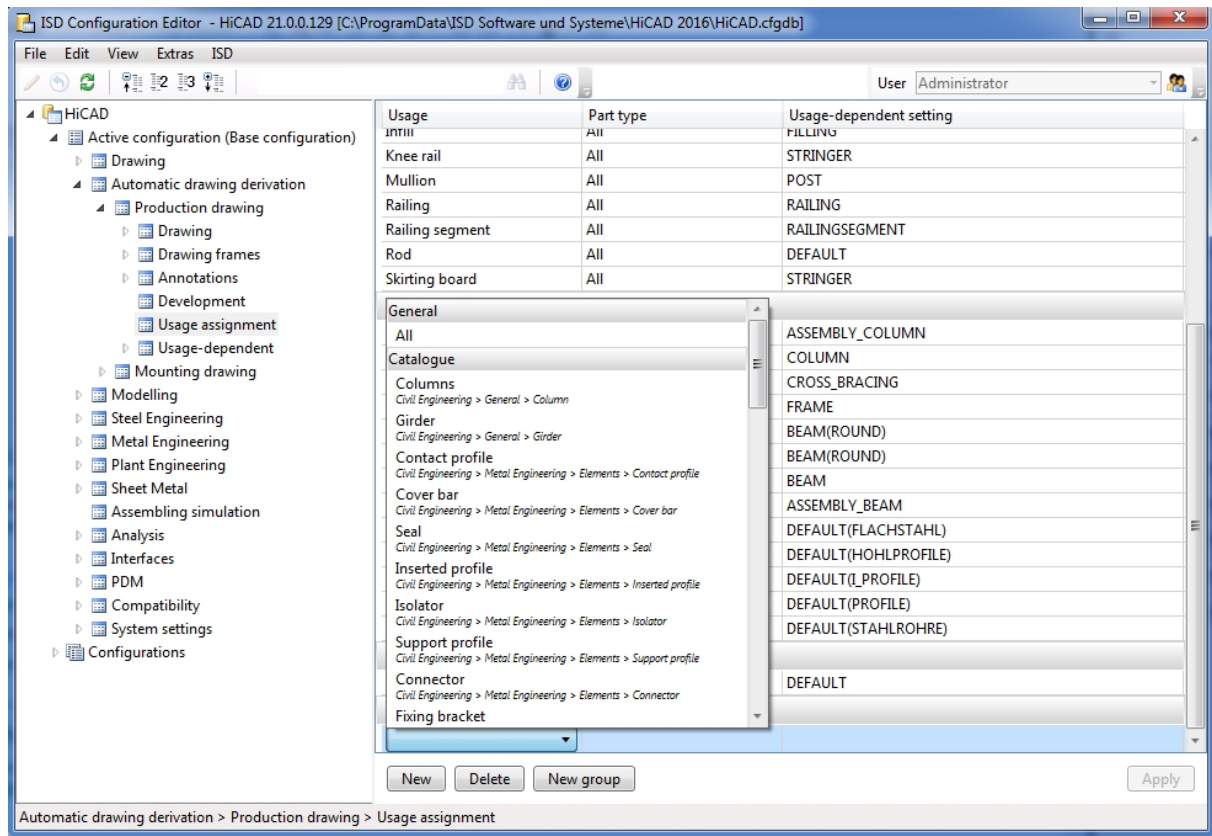
243700027 > Sealing cord, Available on site

243700028 > Sealing cord, Own production

## Add new data record entry




In some areas you have the options to add new data record entries, or new groups with data record entries. To do this, click the **New group** button, enter a name and click **OK**. The group will then be added and an empty data record entry will be shown. When you now click on the input fields, you can compose the data record entry from the values in the displayed selection boxes.



## Permissions (CM)

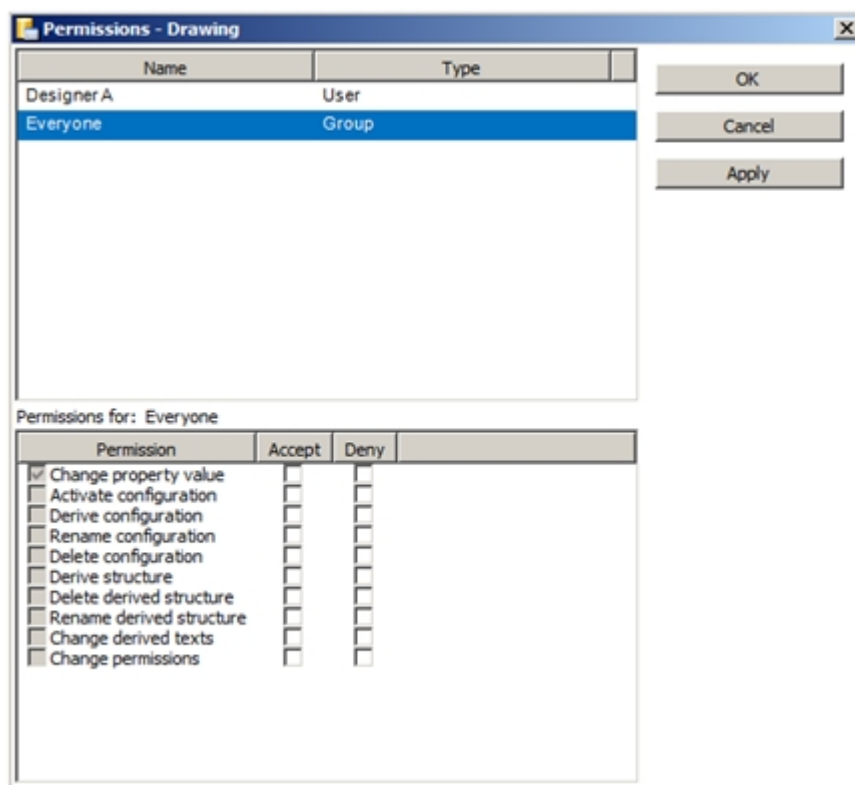
Permissions in the Configuration Editor basically function in the same way as the Windows file system permissions. A typical use case is the granting or withdrawing of the permission **Change property value** - either for all values (via the context menu of the configuration) or for a sub-tree within the configuration structure, including all values immediately below (via the context menu of the uppermost item of the sub-tree).

Permissions can be assigned in a User-based or Group-based way. By default, each User (except for the Administrator) belongs to the Group **Everyone**. If in the Group **Everyone** the permission **Change property value** is withdrawn, “normal” Users do no longer have the rights to change any values. Changed values in HiCAD dialogues, too, will then no longer apply if they are stored in the configuration management. It is then possible to re-assign permissions, e.g. for a particular value or a sub-tree within the configuration structure, to individual Users. Also, Users can be assigned to other Groups who have different permissions. If a User has no write permissions for a value, this

will be indicated (in an activated User profile) by the  icon.

Select **Edit > Permissions**. The **Permissions...** dialogue window will be displayed. In the caption of the dialogue you will also see the name of the currently selected item in the configuration structure (in the example below this is the item “Drawing”).

*Example*





Select the User whose permissions you want to change. Then, specify via the **Accept** and **Deny** checkboxes, which permissions are to be granted to the User. Click the **Apply** button to apply the current settings without closing the dialogue window. Select **OK** to apply the current settings and close the window.


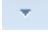


### Please note:

The granted permissions depend, in addition to the selected item in the structure, on the currently active/selected configuration. For example, it is possible to grant permissions starting from a specific configuration derivation level.

## Use Settings in HiCAD (CM)

All changes made in the Configuration Editor will take effect after a restart of HiCAD. Certain settings, such as pre-settings for 2-D dimensioning, can be used in HiCAD immediately after selecting the **Reload**  function (2-D Dimensioning + Text > Edit >  ).

Use the **Load parameters**  function (3-D Dimensioning + Text Tools > Dimensioning > Tools  ) to take over the settings of the BEM3DPAR.DAT file.

## Scenarios (CM)

Below you will find some possible scenarios when using the Configuration Management:

- How do I create a user-specific configuration if I use a standalone installation?
- How do I create a user-specific configuration if I work within a network?
- How do I switch between different configurations?
- How do I, as an administrator, assign different rights and settings to various users?
- How do I transfer the settings of a user to the administrator profile?
- I am already a HiCAD user. What effect will an update have on my configuration settings?
- How do I transfer settings from HiCAD 2014 or 2015 to the Configuration database after installing HiCAD 2016 (new installation)?
- What needs to be done in case of an update from a version older than HiCAD 2011 to HiCAD 2013?
- Why are suddenly new users added to the configuration management of the configuration database, and how do I prevent individual users from changing their settings?
- How can I combine locally saved configuration databases with different settings for individual users into one, central database without losing the settings for the individual users?
- Which settings have priority if administrator settings are different from user settings?
- How do I achieve for several workstations that the administrator profile applies to all users?
- Which options for the changing of settings in the ConfigDB are available in the template files (.csv)?



## How do I create a user-specific configuration if I use a standalone installation? (CM)

In this case you are “your own administrator”, so to speak. If you want to change any settings, start the configuration Editor and change the administrator profile.



### **Important:**

Settings which are saved via HiCAD, e.g. 3-D dimensioning settings, will be saved to the profile of the User who is currently logged onto the operating system, overriding the settings in the administrator profile. If any values are not available in HiCAD as expected, please check if there are user-specific settings for these values.

## How do I create a user-specific configuration if I work within a network? (CM)

Start the Configuration Editor as Administrator (right-click icon and select **Run as administrator**) and derive a new configuration. In the User Management, assign the corresponding configuration to the desired User profile. You can also assign the configuration to the main Group of the User. In this way you ensure that all Users of the same main Group will use this configuration.

Switch to the User profile and edit the required settings.

If no derived configuration is required, you can also simply edit the settings after activation of the User profile in the base configuration.

## How do I switch between different configurations? (CM)

To switch between configurations, select **Edit > Activate configuration** on the menu bar.

General information on how to activate configurations can be found in the topic User Management.



### Please note:

- The permissions assigned here apply globally, i.e. to all Users of the Group.
- Select **Edit > Permissions** to assign permissions to sub-trees of the configuration. You can then define permissions for Users and Groups.
- Use the User Management option to activate configurations for several Users or Groups. Assign the desired configuration to the Users or Groups.

## How do I, as an administrator, assign different rights and settings to various users? (CM)

Start the Configuration Editor as Administrator (right-click icon and select **Run as administrator**).

Use the **Permission** function to assign rights.

Permissions in the Configuration Editor basically function in the same way as the Windows file system permissions. A typical use case is the granting or withdrawing of the permission **Change property value** - either for all values (via the context menu of the configuration) or for a sub-tree within the configuration structure, including all values immediately below (via the context menu of the uppermost item of the sub-tree). Permissions can be assigned in a User-based or Group-based way.

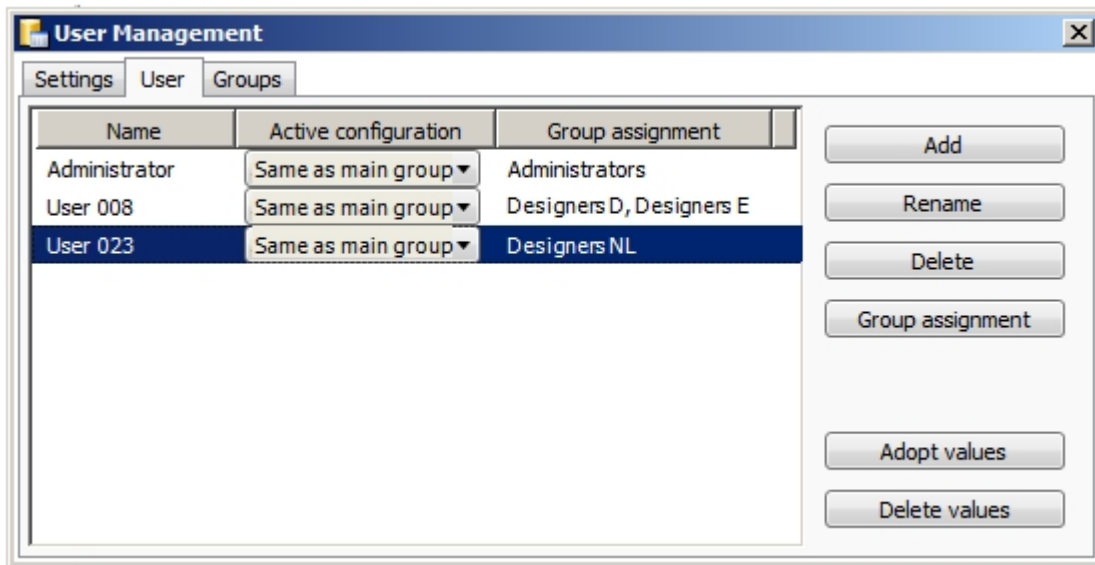
## How do I transfer the settings of a user to the administrator profile? (CM)

Start the Configuration Editor as Administrator (right-click icon and select **Run as administrator**).

Select the User **Administrator**.



Click the icon on the right. The User Management dialogue window will be displayed. In the dialogue, mark the user whose values you want to apply.



Click the **Adopt values** button to transfer the values of the marked user into the active administrator profile.

## I am already a HiCAD user. What effect will an update have on my configuration settings? (CM)

When performing an update from HiCAD 2014 or HiCAD 2015, your settings from the existing configuration file **HICAD.CFGDB** of your previous HiCAD version will be transferred to the Configuration Management of HiCAD 2015, namely into the Administrator profile.

When the update is performed, only the values predefined by the ISD, i.e. the “factory settings”, will be changed. All other (administrator or user) settings will be preserved.

If you use a central configuration database on a server, it will be automatically detected by the update program by means of the corresponding Registry entry and will be updated. For an update of several workstations, one single update will be sufficient; a multiple update will, however, not do any harm either (as an already updated setting will not be updated again).

## How do I transfer settings from HiCAD 2012 or 2014 to the Configuration Database after installing HiCAD 2014 (new installation)? (CM)

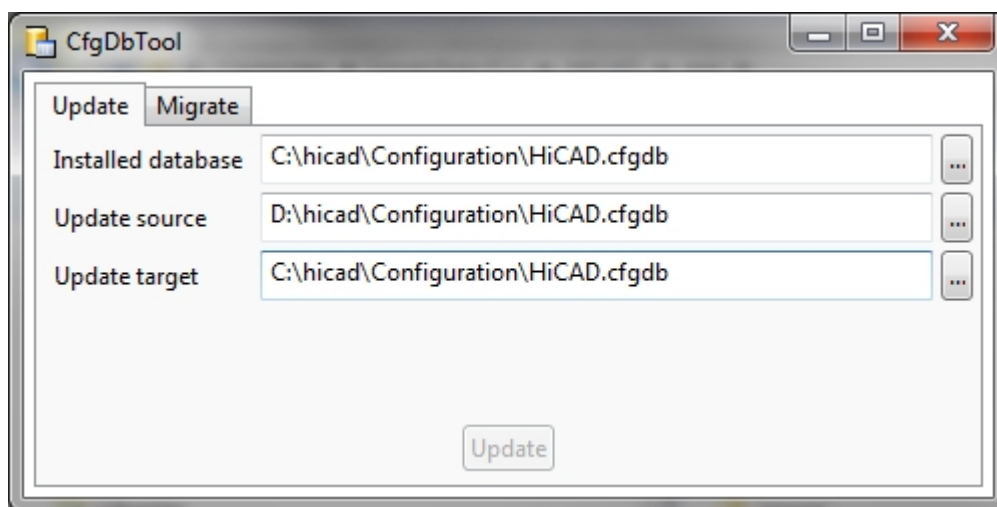
If you perform a (new) installation of HiCAD 2016, the settings predefined by the ISD will be initially used in the Administrator profile of the Configuration Management. If you want to transfer your individual settings in the file HICAD.CFGDB from HiCAD 2014 or HiCAD 2015 to the Configuration Management of HiCAD 2016, use the program **CfgDbTool.exe** in the HiCAD EXE sub-directory for this.

Furthermore, you are enabled to transfer settings from old DAT and XML files which are now managed in the Configuration Editor, to the configuration database of Version 2016.

Proceed as follows:

1. Start the **CfgDbTool.exe** program in the HiCAD EXE sub-directory.

Use the **Update** tab of the CfgDBTool you tab to transfer the settings of your previous configuration file (.CFDB) to the configuration file of Version 2016.



2. Select the directories.

Update tab	
<b>Installed database</b>	The configuration database to be updated, i.e. (the previous configuration database of HiCAD).
<b>Update source</b>	The configuration database of the new version; the configuration database with the current ISD settings can be found in the folder: [HiCAD installation directory]\Configuration.
<b>Update target</b>	The result of the update. If you enter the same file here as in the <b>Installed database</b> , a backup of the previous configuration database will be created. You cannot enter the same database here that you entered in the <b>Update source</b> field.

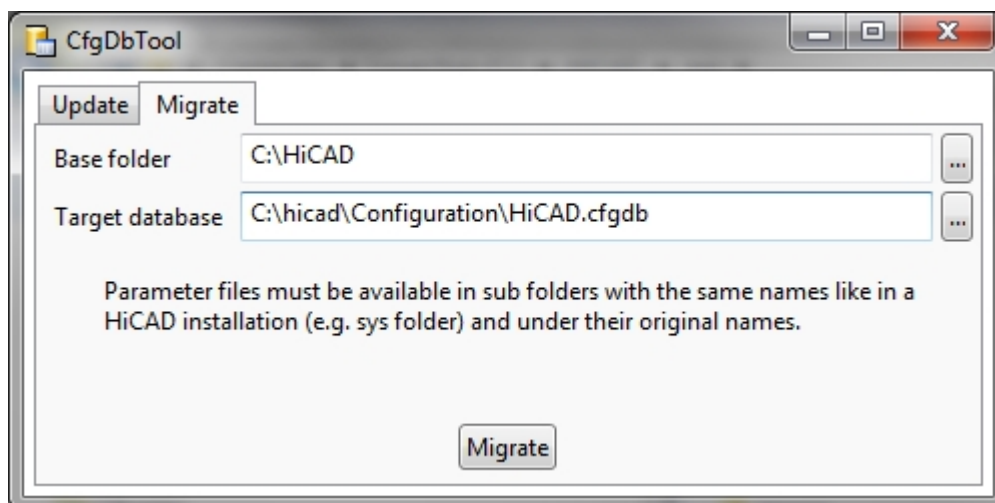
3. Click the **Update** button to start the process.

Use the **Migrate** tab to transfer your individual settings from old DAT and XML files which are now managed in the Configuration Editor, to the configuration database of the version 2015.

The setting files with their adjustments need to be copied to the HiCAD SYS subdirectory of the new HiCAD version for this purpose.

1. Start the **CfgDbTool.exe** program in the HiCAD EXE sub-directory and activate the **Migrate** tab.





2. Select the directories.

Migrate tab	
<b>Base folder</b>	Here you enter the directory where your old DAT and XML files etc. are located. Please make sure that the old files have the same name and are located in the same directory structure as in a HiCAD standard installation.
<b>Target database</b>	Here you specify the database to which the data are to be transferred.

3. Click the **Migrate** button to start the process.

## What needs to be done in case of an update from a version older than HiCAD 2011 to HiCAD 2013 (or higher)? (CM)

The new Configuration Management has been introduced with HiCAD 2011. Therefore you need to perform a new installation for HiCAD 2013 (or higher).

Since the Configuration management has not been supported in versions older than HiCAD 2011, a manual transfer of your individual settings in the aforementioned DAT files to the Configuration Management, via the settings on the **Migrate** tab of the program **CfgDbTool.exe**.

The PDF file Schlüsselnamen.PDF shows you where the settings from the old DAT files can now be found in the Configuration Editor.

## Why are suddenly new users added to the configuration management of the configuration database, and how do I prevent individual users from changing their settings? (CM)

If, for example, a user saves the 3-D dimensioning settings via HiCAD, the corresponding user name will be automatically created in the User Management of the configuration database; the new User will be assigned to the user Group **Everyone** by default.

If you (as Administrator) want to prevent a (new) User from saving his/her individual settings, assign only read permission to the Group **Everyone**. When the user now tries to save the settings via HiCAD, a new User will still be created in the User Management, but the user-specific settings themselves will not be saved. Instead, the configuration defined by the Administrator continues to apply.

## How can I combine locally saved configuration databases with different settings for individual users into one, central database without losing the settings for the individual users? (CM)

Copy the configuration database of a computer to the unlocked server directory. Then, export the active configuration on the other computers and import them to the central database again. Assign, via the User Management, to each User the corresponding configuration.

On the individual workstations, adjust the Registry entry for the storage location of the database.

Start the Configuration Editor as Administrator (right-click icon and select **Run as administrator**) .

## Which settings have priority if administrator settings are different from user settings? (CM)

User-specific settings override Administrator settings. Settings in derived configurations override settings in the superordinate configuration.

Only individual values will be “overridden”: If, for example, an isolated setting contains a User value, this value will apply to the User. All other settings which have not been changed by the User will be read from the Administrator profile. The same principle applies to settings in derived configurations: If a setting in a derived configuration contains neither User values nor Administrator values, the superordinate configuration will be checked etc.

## How do I achieve for several workstations that the administrator profile applies to all users? (CM)

If the Database is located on the server, nothing more needs to be done. To prevent the settings from being overridden by user-specific settings that might exist, all User values should be deleted (select the corresponding User in the User Management and select Delete values). The User Management will only be active if you started the Configuration Editor as Administrator.

In case of a local configuration database, use the Configuration Editor to export the settings on the configured computer (with Administrator profile). In any case it makes sense to remove all user-specific settings that might still exist.

On all other computers, select **File > Import** to read in the exported XML file. All user-defined settings that might still exist should be removed from all computers.

Which options for the changing of settings in the ConfigDB are available in the template files (.csv)? (CM)

Extensive information on this topic can be found in the document "Working with User-Defined Configuration Templates" in our Wiki, at **Product know-how > Whitepaper**.





**ISD Software und Systeme GmbH**

Hauert 4  
44227 Dortmund  
Germany  
Tel. +49-(0)231-9793-0  
Fax +49-(0)231-9793-101  
info@isdgroup.de

**ISD Berlin**

Paradiesstraße 208a  
12526 Berlin  
Germany  
Tel. +49-(0)30-634178-0  
Fax +49-(0)30-634178-10  
berlin@isdgroup.de

**ISD Hamburg**

Strawinskystraße 2  
25337 Elmshorn  
Germany  
Tel. +49-(0)4121-740980  
Fax +49-(0)4121-4613261  
hamburg@isdgroup.de

**ISD Hannover**

Hamburger Allee 24  
30161 Hanover  
Germany  
Tel. +49-(0)511-616803-40  
Fax +49-(0)511-616803-41  
hannover@isdgroup.de

**ISD Nürnberg**

Nordostpark 7  
90411 Nuremberg  
Germany  
Tel. +49-(0)911-95173-0  
Fax +49-(0)911-95173-10  
nuernberg@isdgroup.de

**ISD Ulm**

Wilhelmstraße 25  
89073 Ulm  
Germany  
Tel. +49-(0)731-96855-0  
Fax +49-(0)731-96855-10  
ulm@isdgroup.de

**ISD Austria GmbH**

Hafenstraße 47-51  
4020 Linz  
Austria  
Tel. +43-(0)732-9015-1800  
Fax +43-(0)732-9015-1829  
info@isdgroup.at

**ISD Benelux b.v.**

Het Zuiderkruis 33  
5215 MV 's-Hertogenbosch  
The Netherlands  
Tel. +31-(0)73-61538-88  
Fax +31-(0)73-61538-99  
info@isdgroup.nl

**ISD Benelux b.v.**

Dokter van Deenweg 13  
8025 BP Zwolle  
The Netherlands  
Tel. +31-(0)73-6153-888  
Fax +31-(0)73-6153-899  
info@isdgroup.nl

**ISD Schweiz AG**

Rosenweg 2  
4500 Solothurn  
Switzerland  
Tel. +41-(0)32-62413-40  
Fax +41-(0)32-62413-42  
info@isdgroup.ch

**www.isdgroup.com**

